

Product datasheet for **RG203087**

Neurotensin (NTS) (NM_006183) Human Tagged ORF Clone

Product data:

Product Type: Expression Plasmids
Product Name: Neurotensin (NTS) (NM_006183) Human Tagged ORF Clone
Tag: TurboGFP
Symbol: Neurotensin
Synonyms: NMN-125; NN; NT; NT/N; NTS1
Mammalian Cell Selection: Neomycin
Vector: pCMV6-AC-GFP (PS100010)
E. coli Selection: Ampicillin (100 ug/mL)
ORF Nucleotide Sequence: >RG203087 representing NM_006183
 Red=Cloning site Blue=ORF Green=Tags(s)

TTTTGTAATACGACTCACTATAGGGCGGCCGGAATTCGTCGACTGGATCCGGTACCGAGGAGATCTGCC
 GCC**CGATCGCC**

ATGATGGCAGGAATGAAAATCCAGCTTGTATGCATGCTACTCCTGGCTTTCAGCTCCTGGAGTCTGTGCT
 CAGATTCAGAAGAGGAAATGAAAGCATTAGAAGCAGATTTCTTGACCAATATGCATACATCAAAGATTAG
 TAAAGCACATGTTCCCTCTTGAAGATGACTCTGCTAAATGTTTGCAGTCTTGTAATAATTTGAACAGC
 CCAGCTGAGGAAACAGGAGAAGTTCATGAAGAGGAGCTTGTGCAAGAAGGAACTTCTACTGCTTTAG
 ATGGCTTTAGCTTGAAGCAATGTTGACAATATACCAGCTCCACAAAATCTGTCACAGCAGGGCTTTTCA
 AACTGGGAGTTAATCCAGGAAGATATTCTTGATCTGGAATGACAAAATGAAAGGAAGAAAGTCATA
 AAGAGAAAAATTCCTTATATTCTGAAACGGCAGCTGTATGAGAATAAACCCAGAAGACCCTACACTCA
 AAAGAGATTCTTACTATTAC

ACGCGTACGCGGCCGCTCGAG - GFP Tag - GTTTAA

Protein Sequence: >RG203087 representing NM_006183
 Red=Cloning site Green=Tags(s)

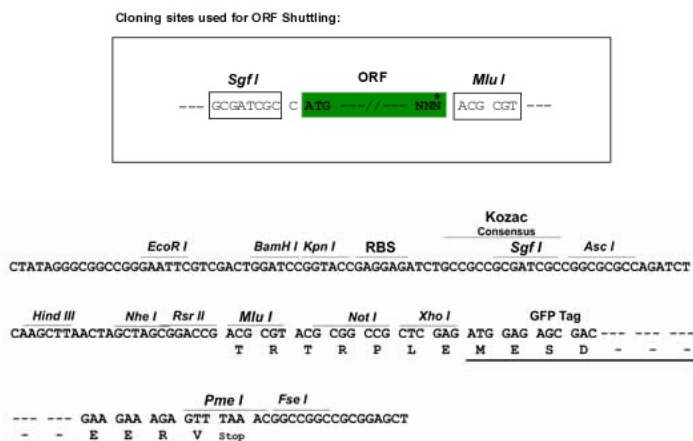
MMAGMKIQLVCMLLLAFSSWSLCSSEEMKALEADFLTNMHTSKISKAVPSWKMTLLNVCSLVNLLNS
 PAEETGEVHEEELVARRKLPALDGFSLAAMLTIYQLHKICHRAHQHWELIQEDILDTGNDKNGKEEVI
 KRKIPYILKRQLYENKPRRPYILKRDSYYY

TRTRPLE - GFP Tag - V

Restriction Sites: SgfI-MluI



[View online >](#)

Cloning Scheme:


ACCN: NM_006183

ORF Size: 510 bp

OTI Disclaimer: The molecular sequence of this clone aligns with the gene accession number as a point of reference only. However, individual transcript sequences of the same gene can differ through naturally occurring variations (e.g. polymorphisms), each with its own valid existence. This clone is substantially in agreement with the reference, but a complete review of all prevailing variants is recommended prior to use. [More info](#)

OTI Annotation: This clone was engineered to express the complete ORF with an expression tag. Expression varies depending on the nature of the gene.

Components: The ORF clone is ion-exchange column purified and shipped in a 2D barcoded Matrix tube containing 10ug of transfection-ready, dried plasmid DNA (reconstitute with 100 ul of water).

Reconstitution Method:

1. Centrifuge at 5,000xg for 5min.
2. Carefully open the tube and add 100ul of sterile water to dissolve the DNA.
3. Close the tube and incubate for 10 minutes at room temperature.
4. Briefly vortex the tube and then do a quick spin (less than 5000xg) to concentrate the liquid at the bottom.
5. Store the suspended plasmid at -20°C. The DNA is stable for at least one year from date of shipping when stored at -20°C.

RefSeq: [NM_006183.5](#)

RefSeq Size: 838 bp

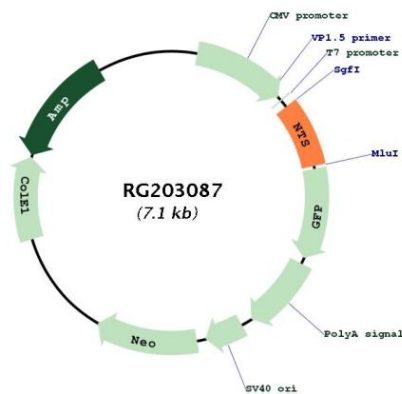
RefSeq ORF: 513 bp

Locus ID: 4922

UniProt ID: [P30990](#)

Cytogenetics:	12q21.31
Protein Families:	Druggable Genome, Secreted Protein
Gene Summary:	This gene encodes a common precursor for two peptides, neuromedin N and neurotensin. Neurotensin is a secreted tridecapeptide, which is widely distributed throughout the central nervous system, and may function as a neurotransmitter or a neuromodulator. It may be involved in dopamine-associated pathophysiological events, in the maintenance of gut structure and function, and in the regulation of fat metabolism. Neurotensin also exhibits antimicrobial activity against bacteria and fungi. Tissue-specific processing may lead to the formation in some tissues of larger forms of neuromedin N and neurotensin. The large forms may represent more stable peptides that are also biologically active. [provided by RefSeq, Oct 2014]

Product images:



Circular map for RG203087