

Product datasheet for **RG203071**

CEP27 (HAUS2) (NM_018097) Human Tagged ORF Clone

Product data:

Product Type:	Expression Plasmids
Product Name:	CEP27 (HAUS2) (NM_018097) Human Tagged ORF Clone
Tag:	TurboGFP
Symbol:	CEP27
Synonyms:	C15orf25; CEP27; HsT17025
Mammalian Cell Selection:	Neomycin
Vector:	pCMV6-AC-GFP (PS100010)
E. coli Selection:	Ampicillin (100 ug/mL)
ORF Nucleotide Sequence:	>RG203071 representing NM_018097 Red=Cloning site Blue=ORF Green=Tags(s)

TTTTGTAATACGACTCACTATAGGGCGGCCGGAATTCGTCGACTGGATCCGGTACCGAGGAGATCTGCC
GCC**CGATCGCC**

ATGGCCGCTGCCAACCCGTGGGACCCGGCGTCCGCGCCTAACGGCGCTGGGCTAGTGTAGGCCACTTCA
TAGCTTCGGGGATGGTCAATCAGGAGATGTTAAACATGTCTAAGAAAACAGTTTCTTGTGTTTGTGAACTT
CACCAGACTACAGCAGATCACAAATATTCAGCTGAAATCTACCAGAAAAACCTGGAAATGAACTCCTG
AAACTAGAAAAAGATACAGCAGATGTTGTTTCATCCTTTCTTTTGGCTCAGAAGTGCATACTCTGCAA
GCATGAATAATCATTGGGAAGCAGTGTGAAAGAGAAGAGATCCCTTAGGCAAAGACTGTTGAAACCCAT
GTGCCAGGAAAACCTTACCTATTGAAGCTGTTTATCACAGATATATGGTACATTTGCTGGAGTTGGCTGTG
ACTTTCATTGAGAGATTAGAAAACCCACCTTGAACAATTAGAAATATTCCCTCATTTAGCTGCAAACTAA
AGAAAATGAACAGGCTTTAGCAAAGATGGATATATTGGTGACTGAGACAGAAGAACTGGCAGAGAATAT
ACTCAAGTGGCGTAAACAACAAAACGAAGTTTCGTCTTGTATCCCCAAAATATTAGCTGAAGAAAGTTAT
CTTTATAAACATGATATTATAATGCCTCCTTTACCTTTTACTTCTAAAGTTCATGTCCAACTATTAATG
CCAAG

ACGCGTACGCGGCCGCTCGAG - GFP Tag - GTTTAA



[View online »](#)

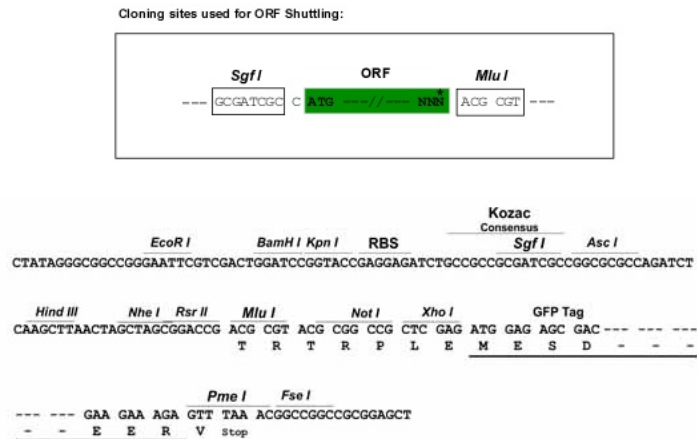
Protein Sequence: >RG203071 representing NM_018097
 Red=Cloning site Green=Tags(s)

MAAANPWPASAPNGAGLVLGHFIASGMVNQEMLNMSKKTVSCFVNFTRLQQITNIQAEIYQKNLEIELL
 KLEKDTADVVPFFLAQKCHTLQSMNNHLEAVLKEKRSRLRQLLKPMCQENLPIEAVYHRYMVHLELAV
 TFIERLETHLETIRNIPHLAANLKKMNQALAKMDILVTETEELAENILKWRKQQNEVSSCIPKILAEESY
 LYKHDIIMPPLPFTSKVHVQTINAK

TRTRPLE - GFP Tag - V

Restriction Sites: SgfI-MluI

Cloning Scheme:



ACCN: NM_018097

ORF Size: 705 bp

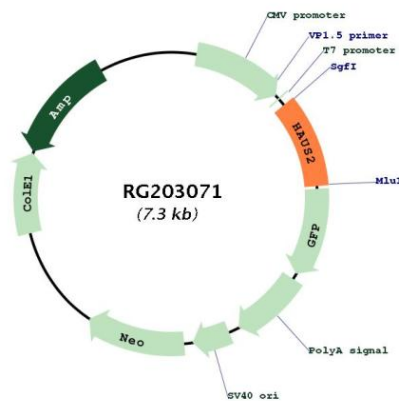
OTI Disclaimer: Due to the inherent nature of this plasmid, standard methods to replicate additional amounts of DNA in E. coli are highly likely to result in mutations and/or rearrangements. Therefore, OriGene does not guarantee the capability to replicate this plasmid DNA. Additional amounts of DNA can be purchased from OriGene with batch-specific, full-sequence verification at a reduced cost. Please contact our customer care team at custsupport@origene.com or by calling 301.340.3188 option 3 for pricing and delivery.

The molecular sequence of this clone aligns with the gene accession number as a point of reference only. However, individual transcript sequences of the same gene can differ through naturally occurring variations (e.g. polymorphisms), each with its own valid existence. This clone is substantially in agreement with the reference, but a complete review of all prevailing variants is recommended prior to use. [More info](#)

OTI Annotation: This clone was engineered to express the complete ORF with an expression tag. Expression varies depending on the nature of the gene.

- Components:** The ORF clone is ion-exchange column purified and shipped in a 2D barcoded Matrix tube containing 10ug of transfection-ready, dried plasmid DNA (reconstitute with 100 ul of water).
- Reconstitution Method:**
1. Centrifuge at 5,000xg for 5min.
 2. Carefully open the tube and add 100ul of sterile water to dissolve the DNA.
 3. Close the tube and incubate for 10 minutes at room temperature.
 4. Briefly vortex the tube and then do a quick spin (less than 5000xg) to concentrate the liquid at the bottom.
 5. Store the suspended plasmid at -20°C. The DNA is stable for at least one year from date of shipping when stored at -20°C.
- RefSeq:** [NM_018097.3](#)
- RefSeq Size:** 1754 bp
- RefSeq ORF:** 708 bp
- Locus ID:** 55142
- UniProt ID:** [Q9NVX0](#)
- Cytogenetics:** 15q15.2
- Gene Summary:** The protein encoded by this gene is a subunit of the augmin complex. The augmin complex plays a role in microtubule attachment to the kinetochore and central spindle formation. [provided by RefSeq, Apr 2016]

Product images:



Circular map for RG203071