

Product datasheet for **RG203069**

PEF1 (NM_012392) Human Tagged ORF Clone

Product data:

Product Type:	Expression Plasmids
Product Name:	PEF1 (NM_012392) Human Tagged ORF Clone
Tag:	TurboGFP
Symbol:	PEF1
Synonyms:	ABP32; PEF1A
Mammalian Cell Selection:	Neomycin
Vector:	pCMV6-AC-GFP (PS100010)
E. coli Selection:	Ampicillin (100 ug/mL)
ORF Nucleotide Sequence:	>RG203069 representing NM_012392 Red=Cloning site Blue=ORF Green=Tags(s)

TTTTGTAATACGACTCACTATAGGGCGGCCGGAATTCGTCGACTGGATCCGGTACCGAGGAGATCTGCC
GCC**CGATCGCC**

ATGGCCAGCTATCCTTACCGGCAGGGCTGCCAGGAGCTGCAGGACAAGCACCAGGAGCCCTCCGGTGA
GCTACTACCTGGACCCCAATAGTGGAGGGCAGTATGGTAGTGGCTACCCCTGGTGGTGGTTATGG
GGGTCCTGCCCTGGAGGGCCTTATGGACCACCAGCTGGTGGAGGGCCCTATGGACACCCCAATCCTGGG
ATGTTCCCTCTGGAATCCAGGAGGACCATATGGCGGTGCAGCTCCCGGGGCCCTATGGTCAGCCAC
CTCCAAGTTCTACGGTCCCAGCAGCCTGGGCTTTATGGACAGGGTGGCGCCCTCCCAATGTGGATCC
TGAGGCCCTACTCCTGGTTCCAGTCGGTGGACTCAGATCACAGTGGCTATATCTCCATGAAGGAGCTAAAG
CAGGCCCTGGTCAACTGCAATTGGTCTTCAATCAATGATGAGACCTGCCTCATGATGATAAATGTTTTG
ACAAGACCAAGTCAGGCCGATCGATGTCTACGGCTTCTCAGCCCTGTGGAAATTCATCCAGCAGTGGAA
GAACCTCTCCAGCAGTATGACCGGGACCCTCGGGCTCCATTAGCTACACAGAGCTGCAGCAAGCTCTG
TCCCAATGGGCTACAACCTGAGCCCCAGTTCACCCAGCTTCTGGTCTCCCGCTACTGCCACGCCTCTG
CCAATCCTGCCATGCAGCTTGACCGCTTCAATCCAGGTGTGACCCAGCTGCAGGTGCTGACAGAGGCCTT
CCGGGAGAAGGACACAGCTGTACAAGGCAACATCCGGCTCAGCTTCGAGGACTTCGTACCATGACGGCT
TCTCGGATGCTA

ACGCGTACGCGGCCGCTCGAG - GFP Tag - GTTTAA



[View online »](#)

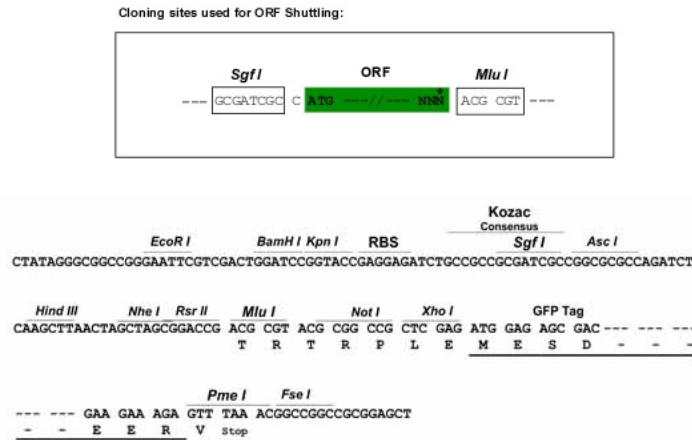
Protein Sequence: >RG203069 representing NM_012392
 Red=Cloning site Green=Tags(s)

MASYPYRQGPCGAAGQAPGAPPGSYYPGPPNSGGQYGSGLPPGGGYGGPAPGGPYGPPAGGGPYGHPNPG
 MFPSGTPGGPYGGAAPGGPYGQPPSSYGAQQPGLYQGQGAPPNVDEAYSWFQSVSDHSGYISMKELK
 QALVNCNWSSFNDETCCLMMINMFDKTKSGRIDVYGF SALWKF IQQWKNLFQQYDRDRSGSISYTELQAL
 SQMGYNLSPQFTQLLVSRVYCPRSANPAMQLDRFIQVCTQLQVLTEAFREKDTAVQGNIRLSFEDFVTMTA
 SRML

TRTRPLE - GFP Tag - V

Restriction Sites: SgfI-MluI

Cloning Scheme:



ACCN: NM_012392

ORF Size: 852 bp

OTI Disclaimer: The molecular sequence of this clone aligns with the gene accession number as a point of reference only. However, individual transcript sequences of the same gene can differ through naturally occurring variations (e.g. polymorphisms), each with its own valid existence. This clone is substantially in agreement with the reference, but a complete review of all prevailing variants is recommended prior to use. [More info](#)

OTI Annotation: This clone was engineered to express the complete ORF with an expression tag. Expression varies depending on the nature of the gene.

Components: The ORF clone is ion-exchange column purified and shipped in a 2D barcoded Matrix tube containing 10ug of transfection-ready, dried plasmid DNA (reconstitute with 100 ul of water).

Reconstitution Method:

1. Centrifuge at 5,000xg for 5min.
2. Carefully open the tube and add 100ul of sterile water to dissolve the DNA.
3. Close the tube and incubate for 10 minutes at room temperature.
4. Briefly vortex the tube and then do a quick spin (less than 5000xg) to concentrate the liquid at the bottom.
5. Store the suspended plasmid at -20°C. The DNA is stable for at least one year from date of shipping when stored at -20°C.

RefSeq: [NM_012392.1](#), [NP_036524.1](#)

RefSeq Size: 1641 bp

RefSeq ORF: 855 bp

Locus ID: 553115

UniProt ID: [Q9UBV8](#)

Cytogenetics: 1p35.2

Domains: EFh

Gene Summary: This gene encodes a calcium-binding protein belonging to the penta-EF-hand protein family. The encoded protein has been shown to form a heterodimer with the programmed cell death 6 gene product and may modulate its function in Ca(2+) signaling. Alternative splicing results in multiple transcript variants and a pseudogene has been identified on chromosome 1. [provided by RefSeq, May 2010]

Product images:



Circular map for RG203069