

## Product datasheet for **RG203048**

### ARMCX2 (NM\_014782) Human Tagged ORF Clone

#### Product data:

Product Type:	Expression Plasmids
Product Name:	ARMCX2 (NM_014782) Human Tagged ORF Clone
Tag:	TurboGFP
Symbol:	ARMCX2
Synonyms:	ALEX2; GASP9
Mammalian Cell Selection:	Neomycin
Vector:	pCMV6-AC-GFP (PS100010)
E. coli Selection:	Ampicillin (100 ug/mL)



[View online »](#)

**ORF Nucleotide Sequence:**

>RG203048 representing NM\_014782  
 Red=Cloning site Blue=ORF Green=Tags(s)

TTTTGTAATACGACTCACTATAGGGCGGCCGGGAATTCGTCGACTGGATCCGGTACCGAGGAGATCTGCC  
 GCC**CGGATCGCC**

ATGAGCCGCGTTCGGGATGCTGGCTGTGTAGCGCGGGGATAGTGATAGGGGCTGGTGCCTGGTACTGTG  
 TCTACAAATACACCAGGGGAGAGACCAGACCAAGAAGAGAATGGCCAAGCCAAAAACCGGCTGTGGC  
 TGGGACTGGAGCCAGGGCTAGAGCTGGGCTAAGAGCCGGATTACAATCGACCTTGGGTCAGGATTCAGT  
 CCCCCAACCCAGTCCGTGCTGAAGCAGAGGACAGGGCCAGGATGAAGCCTCTGCTCTGGACACAGTTG  
 GAGCTGAGGCAGTGGCCACAGTGCATCCAGCGCTGAGGCTCAGAGTGGGGCAGGCAGTCAAGCCAAAGA  
 GGCAGATGGAGCCGGGTTGGGCCTAAGGCCGAATCAGTAGTTGGGGCTGCAATGGCTTCTGCAATAGCA  
 CCACCTCCCGGGTGACAGAGGCCCTTGGGGCTGCAGAAGCCCTGCAATGGCAGGGCTCCCAAAGTGG  
 CAGAAGCTCCAGAGAAGCGGAGACTTCCAGGGCAGCGGTGCCTCTGGGACAGTGGTGCCTACCGAAGC  
 GGCAGCACCCACTGAGGTGACCGAGGGTCTGGGGTAGCAGCACCTACCAAGGTAGCTGAAGCTCCCGGG  
 GTGGCATCGCCTACCGAGGCAGCTGAGGCTCCTGTGCCCGCAACGCCCTACTGGGGCTGCAGCACCTACTG  
 GGGCTGCAGAGTCTCCTGGAACCTCTGGTTCCCTTAGAACAGCGGTGGTTCTGGAACATCAGCTGCCAA  
 GAAAGCAACCCCTGGGGCTCACACTGGGGCTATACCGAAAGCCACATCAGCGACTGGAGCGGTACCCAAA  
 GGTGGAGGCAAGGGTGTAAACAGTCCCAGGATGGGGCAAGGGCAAGGGCAAGAAAAGCAAAGTTGAAG  
 TAGACGAACTGGGGATGGGCTTCCGTCTGGAGATGGGGCTGCAGCAGCTGCTGCAGCCTCTGCTAATGG  
 CGGACAGGCTTCTGCGCAGAGTCCCTGATTCTGAGGAAGGGGAGTCCGGGTGGACTGACACAGAGTCA  
 GATTCAGACTCTGAGCCCGAGACCCAGCGCAGAGGGAGGGGAAGAAGACCCGTTGCCATGCAGAAGCGCC  
 CCTTCCCTTATGAAATTGATGAGATTCTGGGTGTCGCGATCTCAGGAAGTCTTGCCTTGCTTCAGAA  
 ATCTGATGATCCTTTCATCCAACAGGTAGCTTTGCTCACTCTGAGCAACAATGCCAATTATTCATGCAAT  
 CAAGAGACAATCCGCAAATTGGGAGGCCTCCCAATTATTGCAAACATGATCAACAAAACATGATCCACACA  
 TTAAGGAAAAAGCCTTAATGGCCATGAATAACCTGAGTGAGAATTATGAAAATCAGGGCCGGCTTCAGGT  
 GTACATGAATAAAGTGTGGATGATATCATGGCCTCTAACCTGAACTCAGCAGTTCAAGTGTGGACTA  
 AAATTTCTAACAAACATGACTATTACTAATGACTACCAACACCTGCTTGTCAATTCATTGCAAATTTT  
 TCCGTTTGTATCTCAGGGAGGTGGAAAAATCAAGTTGAGATTTTGAATCCTTTCGAATTTTGTCTGA  
 AAATCCAGATATGTTGAAGAACTTCTCAGTACCCAAGTCCAGCATCATTTAGTCCCTCTATAATTCT  
 TACGTGGAACTCAGAAATCCTTATTAATGCCCTTACTCTATTTGAGATTATCTATGACAATCTCAGAGCAG  
 AAGTGTTTAACTATAGAGAATTCATAAAGGTTCCCTTTTTACTTATGCACTACATCTGGAGTGTGTGT  
 TAAGAAAATTAGAGCCTTAGCAAATCACCATGACCTCTTAGTGAAGTGAAGTTATAAACTAGTGAAC  
 AAATTC

**ACGCGT**ACGCGGCCGCTCGAG – GFP Tag – GTTTAA

**Protein Sequence:**

>RG203048 representing NM\_014782  
 Red=Cloning site Green=Tags(s)

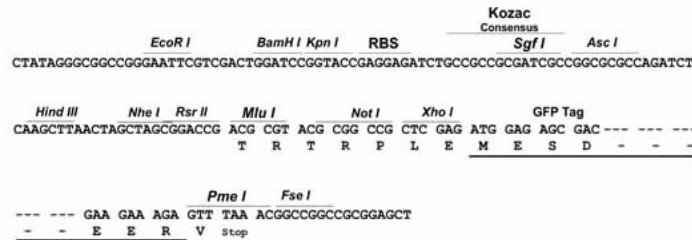
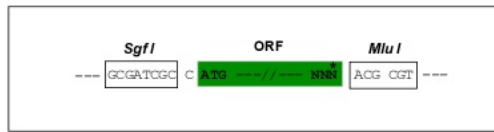
MSRVRDAGCVAAGIVIGAWYCVYKYTRGRDQTKKRMKPKNRAVAGTGARARAGLRAGFTIDLGSGFS  
 PPTPVRAEADRAQDEASALDVTGAEAVAPAASSAEAQSGAGSQAQAEADGAGVGPKAESVVGAAASAIA  
 PPPGVTEALGAAEAPAMAGAPKVAEAPREAETSRAAVPPGTVVPTAAAPEVTEGPGVAAPTQKVAEAPG  
 VASPTAAEAPVPATPTGAAAPTGAESPSTSGSPRTAVVPGTSAKKATPGAHTGAIPKATSATGAVPK  
 GGGKGVTRSRNGKGGKGGKSKVEVDELGMGFRPGDGAAAAAASANGGQAFLEVPDSEEGESGWTDTES  
 DSDSEPETQRRGRRRPVAMQKRFPYIDEILGVRDLRKLALLQKSDDPFIQQVALLTSLNNANYSCN  
 QETIRKLGGLPIIANMINKTDPHIKEKALMAMNLSNYENQGRQLQVYMNKVMDDIMASNLNSAVQVGL  
 KFLTNMTITNDYQHLLVNSIANFFRLLSQGGGKIKVEILKILSNFAENPDMLKLLSTQVPASFSSLYNS  
 YVESEILINALTFEIIYDNLRAEVFNREFNKGSLFYLCCTSGVCVKKIRALANHHDLVKVKVIKLVN  
 KF

**TRTRPLE** – GFP Tag – V

Restriction Sites: SgfI-MluI

Cloning Scheme:

Cloning sites used for ORF Shutting:



ACCN: NM\_014782

ORF Size: 1896 bp

OTI Disclaimer: The molecular sequence of this clone aligns with the gene accession number as a point of reference only. However, individual transcript sequences of the same gene can differ through naturally occurring variations (e.g. polymorphisms), each with its own valid existence. This clone is substantially in agreement with the reference, but a complete review of all prevailing variants is recommended prior to use. [More info](#)

OTI Annotation: This clone was engineered to express the complete ORF with an expression tag. Expression varies depending on the nature of the gene.

Components: The ORF clone is ion-exchange column purified and shipped in a 2D barcoded Matrix tube containing 10ug of transfection-ready, dried plasmid DNA (reconstitute with 100 ul of water).

Reconstitution Method:

1. Centrifuge at 5,000xg for 5min.
2. Carefully open the tube and add 100ul of sterile water to dissolve the DNA.
3. Close the tube and incubate for 10 minutes at room temperature.
4. Briefly vortex the tube and then do a quick spin (less than 5000xg) to concentrate the liquid at the bottom.
5. Store the suspended plasmid at -20°C. The DNA is stable for at least one year from date of shipping when stored at -20°C.

RefSeq: [NM\\_014782.3](#)

RefSeq Size: 2790 bp

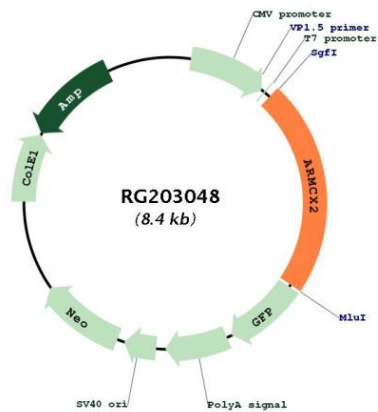
RefSeq ORF: 1899 bp

Locus ID: 9823

UniProt ID: [Q7L311](#)

**Cytogenetics:** Xq22.1  
**Domains:** DUF634  
**Protein Families:** Transmembrane  
**Gene Summary:** This gene encodes a protein containing a potential N-terminal transmembrane domain and multiple armadillo (arm) repeats. Proteins containing arm repeats are involved in development, maintenance of tissue integrity, and tumorigenesis. This gene is located in a cluster of related genes on chromosome X. There is a pseudogene for this gene on chromosome 7. Alternative splicing in the 5' UTR results in multiple transcript variants encoding the same protein. [provided by RefSeq, Aug 2013]

**Product images:**



Circular map for RG203048