

Product datasheet for **RG203034**

ZNF31 (ZSCAN20) (NM_145238) Human Tagged ORF Clone

Product data:

Product Type:	Expression Plasmids
Product Name:	ZNF31 (ZSCAN20) (NM_145238) Human Tagged ORF Clone
Tag:	TurboGFP
Symbol:	ZSCAN20
Synonyms:	KOX29; ZFP-31; ZNF31; ZNF360
Mammalian Cell Selection:	Neomycin
Vector:	pCMV6-AC-GFP (PS100010)
E. coli Selection:	Ampicillin (100 ug/mL)
ORF Nucleotide Sequence:	>RG203034 ORF sequence, codon optimized . Due to the complexity of NM_145238, the ORF clone is codon optimized for mammalian Expression. The nucleotide sequence differs from the reference sequence, yet the amino acid sequence remains identical.

Red=Cloning site Blue=ORF Green=Tags(s)

TTTTGTAATACGACTCACTATAGGGCGGCCGGGAATTCGTCGACTGGATCCGGTACCGAGGAGATCTGCC
GCC**CGGATCGCC**

ATGGCCATGGCGCTCGAGCTGCAGGCTCAGGCTAGCCCTCAGCCAGAGCCTGAAGAGCTCCTGATTGTCA
AGCTCGAGGAAGATTCTTGGGGCAGCGAGTCCAAGCTGTGGGAGAAGGACCGCGGAAGCGTGAGCGGCC
TGAAGCCAGTCGCCAGCGCTTTCGGCAGTTTCAATACAGGGATGCGGCCGGACCCACGAAGCGTTTTCC
CAGCTTTGGGCGCTTGTTCAGGTTGGCTGAGGCTGAAATAAGGCTCAAGGAACAGATTCTTGAAGTGC
TCGTGCTGGAGCAGTTTCTACAATTTGCCTCGAGAGTTTCAGACCTGGGTCCAAGCAAGACACCCAGA
AAGTGGCGAAGAGGCTGTGGCTCTCGTCGAGGATTGGCATCGGAAACTAGAACCAGCGGCCAGTCCGGA
CTGGAAGTGCACACCGAAGAAACCGGCCACTTAAGACTGGTGAAGAAGCCAGTCATCCAGCTCCAGC
CAGTTGATCCCTGGCCGGAGGGCCAGTCCAGAAAAGGGCGTGAAGAACACCTGTCCCGATCTGCCTAA
TCATCTTAATGCCGAGGTCGCCCGCAGCCATTGAAAGAATCTGCCGTGCTGACACCAAGAGTGCCCA
CTGCCGAAAATGGGATCCGTGGGGGACTGGGAAGTACAGCCGAGAGCCAGGAAGCACTGGTCCGGGTA
AACACGCCGAGAAAGAACTGTGCAAGGACCCAGGATGACTGTGGCAACTCTGTTTGCCTGGGGGT
GCCCGTGTCTAAACCATCAACACTAGCGAAAAGGAACAGGGACCGGAGTTCTGGGGCTTCTCTTATT
AACTCCGGAAGAGGTCTACCGCGATTACTACTGGACAATGAACCAGCACAGGCCCTGACATGGCGAG
ATTCAAGAGCTTGGGAGAACAGTACCAGTGGGACGTGAAGATATGAAGGTGTCAGGGGTGCACTGGG
ATATGAGGAAACAAAACCTTTCTGCCATTCTGTCCGAGTCCCCTTTTCAGAGAAGCTCGGACATGT
CACAAAATAGACAGGTGTACCGCGCTATCGCCGAGCAGTTGCGGCACGCGGATTCTTGAGGACTCTTG



[View online »](#)

```

AACAGTGCAGATATCGCGTAAAAAATTGCTTCGCAACTACAGAAAAGCTAAGTCTAGCCACCCCTGG
GACCTGCCATTCTATGAGGAACTGGAAGCGCTGGTGCAGCGCGAACTGCAATTCGCGCCACTGACGGG
CCAGGAGAAGCCGTGGCCTGCCCGATTGGGGGATTAGATGCCGAGATGGATGAGCAAGGAAGGAG
GCTGGGATCCCGAAGAAATGGCCGAAGACTGTAATGGCGCAGGGCTCGTGAACGTAGAATCAACTCAGGG
CCCTAGGATCGCGGGAGCCCCAGCACTTTTTCAGTCCCGCATCGCGGGGTGCACTGGGGATACGAGGAG
ACAAAGGCTTTTTTGGCCATTCTCTCTGAGAGCCCATTTTCCGAAAAGTTGCGAACCTGGACAAATG
CCCAAGTGATCGCGCGATAGCTGAGAGGCTGTGTGCATTGGGGTTTCTCAGAACCCTGGAGCAGTCCCG
GTACCGCTTTAAAAATTTGTTGCGCAGTTATAGGAAGGCCAAGTATCTACCCTCCAGGAACATGTCCA
TTTTACGAAGAGCTGGATAGCTTATGCGAGCTAGGGCCCGCTCAGAGCAATGGGAACCGTAAGAGAGG
CCGCTGGCCTTCCACGGTGCAGCTCAGAGCTCCGCCGAACTGATGCTCAGGAAGCCTGGGGCAAGTGCC
AAACGAGGACGCTGTGAAACCCTCCACTGTGCCCAAAGCCCTGACATGGGGTTTCAAATGAGACAT
GAGGACGAAGATCAGATATCAGAGCAGGACATATTCGAAGGGTTGCCGGGAGCGCTCAGCAAGTGTCAA
CCGAGGCGGTGTCCAGCCTCTCGATTGGGAGAGGACAGTAAAATGAGAACGAGGACGAGGGCAGTG
GGGAAATCCTTCTCAGGAACAATGGCAGGAATCCTCAAGCGAGGAAGACTTGAGAAAATTGATAGACCAC
CAAGGGCTGTATCTCGCAGAAAAGCCTTATAAGTGTGATACTTGCATGAAGAGTTTCTCCCGCAGCAGTC
ATTTTCATTGCTCACCAAAGGATTCAACCGGGGAGAAACCATACAAGTGCTTGAATGCGGTAAAAATTT
CAGCGATCGATCCAACCTGAACACTCACCAGAGGATTCACACCGGCGAAAAACCTATAAATGCCTGGAA
TGCGGGAAGTCATTACAGCGATCATTCCAATCTGATCACTCACCAGAGAATACATACGGGCGAAAAGCCAT
ATAAATGCGGCGAGTGTGGAAGTCTTTAATCAAAGTAGCAACCTGCTTAAAGCACCAGAGGATTACCT
CGGCGCAATCCAGATCAATGTTCCGAGCCCGGAGGTAATTTCCGACAGAGTCCATCTTTTCAGCGCTCAT
TGGCGCAATAGCACCGAGGAGACTGCGCCTGAGCAACCCAAAGCATCTCTAAAGATTTGAATCCCCAG
GACCTCACTCCACTAATAGTGGGAGAAGCTGTATGAATGCTCCGAGTGTGGAAGGTCACTCTTAAGT
CAGCGCACTCATCAGTCATCAGCGGATTACACCGGCGAAAAGCCCTACGAGTGTGCGGGAATGCGGGAAA
TCATTTAGCAAAAAGCAGCACCTTGCTAATCACCAGAGAACACACAGGAGAAAAGCCTTACAAAATGCG
TTGATTGCGGAAAAGTGTCTCAGAGAGGTCTAAGCTGATAACACACCAGCGGGTTCACACCGGCGAGAA
GCCCTATAAGTGCCTTGAGTGCAGGAAAGTCTTTTCGAGATCGGTCAAATCTGATCACACATCAGCGAATA
CATACTGGGAGAAAACCTACAAGTGTGCGGAAATGCGGAAAATGTTTTAATCAGTCTAGCTCTTTATAA
TCCACCAGCGAATCCACACCGGGGAAAACCGTACAAATGCACGGAAATGTGAAAAGACTTTAACACAG
CAGCCATTTCTGCCCATAGGAGGACTCAGCCGCGGCAAGGCTTCC
    
```

ACGCGTACGCGGCCGCTCGAG – GFP Tag – GTTTAA

Protein Sequence:

>RG203034 representing NM_145238
 Red=Cloning site Green=Tags(s)

```

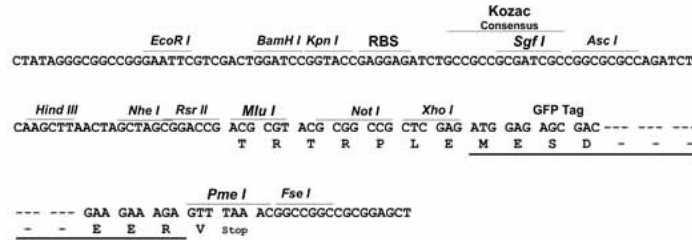
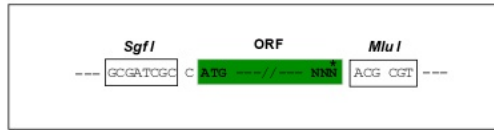
MAMALELQAQASPQPEPEELLIVKLEEDSWGSESKLWEKDRGSVSGPEASRQRFQYRDAAGPHEAFS
QLWALCCRWLRLPEIRLKEQILELLVLEQFLTILPREVQTWVQARHPESGEEAVALVEDWHRETRTAGQSG
LELHTEETRPLKTGEEAQSFQLQPVPWPPEGQSQKKGVKNTCPDLPNHLNAEVAPQPLKESAVLTPRVPT
LPKMGSVGDWEVTAESQEALGPGKHAEKELCKDPPGDDCGNSVCLGVPVSKPSNTSEKEQGPEFWGLSLI
NSGKRSTADYSLDNEPAQALTWDRSRAWEEQYQWVDMKVSQVHWGYYETKFLAILSESPFSEKLRTC
HQNQRVYRAIAEQLRARGFLRTLQCRYRVKNLLRNYRKAKSSHPPGTCPFYEELEALVRARAIARATDG
PGEAVALPRLGSDAEMDEQEEGWDPPEMAEDCNGAGLVNVESTQGPRIAGAPALFQSRVAGVHWGYYE
TKAFLAILSESPFSEKLRTCHQNSQVYRAIAERLALGFLRTLQCRYRFKNLLRSYRKAKSSHPPGTCP
FYEELDSLMRARAAMVRAAGTAVRAAGLPRCGQSSAETDAQEAWGEVANEDAVKPSLCPKAPDMGFEMRH
EDEDQISEQDIFEGLPGALSKCPTAVCQPLDWGEDSENEDEGQWGNPSQEQWQESSSEEDLEKLDH
QGLYLAEKPKYKCDTCMKSFSSSHFIAHQRIHTGEKPYKCLECGKNFSDRSNLNTHQRIHTGEKPYKCLE
CGKSFSDHNLITHQRIHTGEKPYKCGECWKSFNQSSNLLKHQRIHLGGNPDQCSEPGGNFAQSPFSFSAH
WRNSTEETAPEQPQSI SKDLNSPGHSTNSGKLYECSECGRSFSKSSALISHQRHTHTGEKPYECACGK
SFSKSSLANHQRTHTGEKPYKCDVCGKCFSESKLITHQRVHTGEKPYKCLECGKFFRDRSNLITHQRI
HTGEKPYKCRECGKCFNQSSSLIHTQRIHTGEKPYKCTECGKDFNNSSHFSAHRRTHAGGKAS
    
```

TRTRPLE – GFP Tag – V

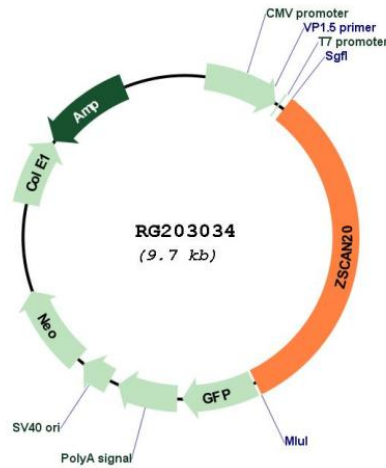
Restriction Sites: SgfI-MluI

Cloning Scheme:

Cloning sites used for ORF Shutting:



Plasmid Map:



ACCN: NM_145238

ORF Size: 3129 bp

OTI Disclaimer: The molecular sequence of this clone aligns with the gene accession number as a point of reference only. However, individual transcript sequences of the same gene can differ through naturally occurring variations (e.g. polymorphisms), each with its own valid existence. This clone is substantially in agreement with the reference, but a complete review of all prevailing variants is recommended prior to use. [More info](#)

OTI Annotation: This clone was engineered to express the complete ORF with an expression tag. Expression varies depending on the nature of the gene.

Components:	The ORF clone is ion-exchange column purified and shipped in a 2D barcoded Matrix tube containing 10ug of transfection-ready, dried plasmid DNA (reconstitute with 100 ul of water).
Reconstitution Method:	<ol style="list-style-type: none">1. Centrifuge at 5,000xg for 5min.2. Carefully open the tube and add 100ul of sterile water to dissolve the DNA.3. Close the tube and incubate for 10 minutes at room temperature.4. Briefly vortex the tube and then do a quick spin (less than 5000xg) to concentrate the liquid at the bottom.5. Store the suspended plasmid at -20°C. The DNA is stable for at least one year from date of shipping when stored at -20°C.
RefSeq:	<u>NM_145238.3</u> , <u>NP_660281.2</u>
RefSeq Size:	4243 bp
RefSeq ORF:	3132 bp
Locus ID:	7579
UniProt ID:	<u>P17040</u>
Cytogenetics:	1p35.1
Domains:	myb_DNA-binding, LER, zf-C2H2
Protein Families:	Transcription Factors
Gene Summary:	May be involved in transcriptional regulation.[UniProtKB/Swiss-Prot Function]