

Product datasheet for **RG203028**

MON1A (NM_032355) Human Tagged ORF Clone

Product data:

Product Type:	Expression Plasmids
Product Name:	MON1A (NM_032355) Human Tagged ORF Clone
Tag:	TurboGFP
Symbol:	MON1A
Synonyms:	SAND1
Mammalian Cell Selection:	Neomycin
Vector:	pCMV6-AC-GFP (PS100010)
E. coli Selection:	Ampicillin (100 ug/mL)



[View online »](#)

ORF Nucleotide Sequence:

>RG203028 representing NM_032355
 Red=Cloning site Blue=ORF Green=Tags(s)

TTTTGTAATACGACTCACTATAGGGCGGCCGGGAATTCGTCGACTGGATCCGGTACCGAGGAGATCTGCC
 GCC**GCGATCGCC**

ATGGCTACTGACATGCAGAGGAAGAGAAGCAGCGAATGCCTTGATGGCACATTGACTCCTTCTGATGGAC
 AGAGTATGGAGAGAGCTGAGAGCCCCACACCAGGAATGGCCAGGGAATGGAGCCAGGTGCGGGCCAGGA
 GGGTGCCATGTTCTGTCATGCCCGTTCTACGAGGACCTGACTGAGTCAGAGGATGGGGCAGCTTCTGGG
 GACAGCCACAAGGAGGGTACCAGGGTCCCCCGCGCTGCCTACAGACATGCGCCAGATCAGCCAGGACT
 TTAGCGAGCTAAGCACCCAGCTGACGGGTGGGCCGGGACCTGCAGGAGGAGATGCTGCCAGGAAGCTC
 TGAGGATTGGCTGGAACCCAGGGCAGTTGGCGACCAGCCACAGAGCCCCCAGGGAGGGCACAACC
 GAGGGGGATGAGGAGGATGCCACGGAGGCATGGCGCTGCACCAGAAGCATGTCTTTGTGCTGAGTGAGG
 CAGGGAAGCCTGTGTACTCCGCTATGGTCTGAGGAGGCACTTCCAGCACTATGGGTGTTATGGTGGC
 CCTGGTGTCTTCTGGAGGCAGACAAGAACGCCATCCGCTCCATCCATGCAGATGGCTACAAGGTAGTA
 TTCGTGCCCGGAGCCCGCTGGTCTAGTGCGGTGGCTCGTACGCGCAGTCGGCACAAGAGCTGGCGC
 AGGAGCTGCTCTACATCTACTACAGATCCTAAGCCTTCTTACCGGTGCGCAGCTGAGCCACATCTTCCA
 GCAGAAGCAGAACTATGATTTGCGGCGCCTACTCTCGGGCTCAGAGCGCATCACCGACAACCTGCTGCAG
 CTCATGGCAGCAGACCCAGCTTCTGATGGGGCGGCACGGTGCCTGCCCTGGCGGGCGCCGTGCGCG
 AACTGTGAGCGCCAGCCTGCAGCAGGCGCGTGCAGCAGCCTGGTCTTCTCCATCTGCTGGCCCGCAA
 CCAGCTCGTGGCACTCGTGCAGGAAAGGACCAATTTCTGACCCCATCGACCTGCACCTGCTCTTCAAC
 CTCATTAGTTCCTCTCGTCTTTCCGAGGGCGAGGCTGGACGCCCGTGTGCTGCCAAATTCACG
 CAGCCGCTTCTCCACGCACACATCTTACCTAGAGCCTGACACTGACCTCTGCTGCTGTGCTCTC
 CACTGACCGTGAGGACTTCTTTGAGTCTCTGACTGCCGCGCCGCTTCCAGGAGCGCCTTCGCAAGCGC
 GGAGCCACCTGGCCCTGCGAGAGGCACTGCGCACACCCTACTACAGCGTTGCCAAGTGGGCATCCCTG
 ACCTGCGTCACTTCTCTATAAGTCAAAGAGCTCGGGACTCTTACCAGCCCTGAGATTGAGGCCCCATA
 CACCAGTGAAGAGGAGCAGGAGCGGCTGCTGGGCTCTACCAGTACTTGCACAGTCGTGCCACAATGCC
 TCTCGCCACTCAAGACCATTTACTACAGGGCCCAACGAGAACCTCCTGGCTGGGTGACAGGCGCCT
 TTGAGCTCTACATGTGTACAGCCCCCTGGGGACCAAGGCGTCAGCCGTCAGTCCATCCATAAGCTGAT
 GCGCTGGATCCGCAAAGAGGAAGACCGCCTTTCATTCTACGCCCTCACCTAT

ACGCGTACGCGGCCGCTCGAG - GFP Tag - GTTTAA

Protein Sequence:

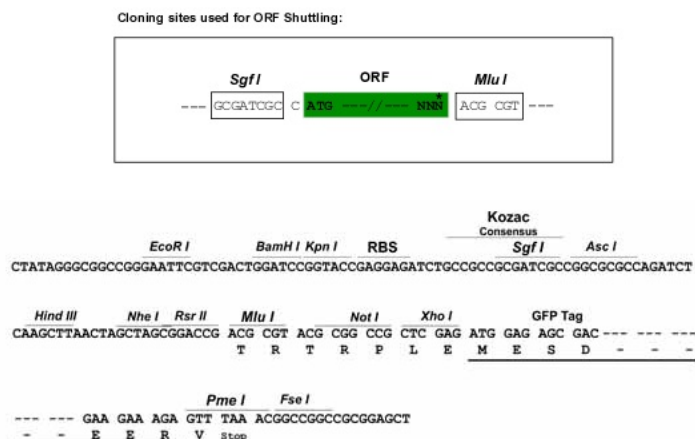
>RG203028 representing NM_032355
 Red=Cloning site Green=Tags(s)

MATDMQRKRSSSECLDGLTTPSDGQSMERAE SPTPGMAQGMPEGAGQEGAMFVHARSYEDL TESEDGAASG
 DSHKEGTRGPPPLPTDMRQISQDFSELSTQLTGVARDLQEEMLPSSSEDWLEPPGAVGRPATEPPREGTT
 EGDEEDATEAWRLHQKHVFLSEAGKPVYSRYGSEEAL SSTMGVMVALVSFLEADKNAIRSIHADGYKVV
 FVRRSPLVLVAVARTRQSAQELAQELLYIYYQILSLLTGAQLSHIFQQKQNYDLRRLLSGSERITDNLQ
 LMARDPSFLMGAARCLPLAAVRDVTASLSLQARARSLVFSILLARNQLVALVRRKQDQFLHPIDLHLLFN
 LISSSSSFREGEAWTPVCLPKFNAAGFFHAHISYLEPDTDLCLLLVSTDREFFAVSDCRRRFQERLRKR
 GAHLALREALRTPYYSVAQVGPDLRHFLYKSSGLFTSPEIEAPYTSEEEQERLLGLYQYLHRAHNA
 SRPLKTIYYTGPENLLAWVTGAFELYMCYSPLGTKASAVSAIHKLMRWIRKEEDRLFIL TPLTY

TRTRPLE - GFP Tag - V

Restriction Sites:

Sgfl-MluI

Cloning Scheme:


ACCN: NM_032355

ORF Size: 1665 bp

OTI Disclaimer: The molecular sequence of this clone aligns with the gene accession number as a point of reference only. However, individual transcript sequences of the same gene can differ through naturally occurring variations (e.g. polymorphisms), each with its own valid existence. This clone is substantially in agreement with the reference, but a complete review of all prevailing variants is recommended prior to use. [More info](#)

OTI Annotation: This clone was engineered to express the complete ORF with an expression tag. Expression varies depending on the nature of the gene.

Components: The ORF clone is ion-exchange column purified and shipped in a 2D barcoded Matrix tube containing 10ug of transfection-ready, dried plasmid DNA (reconstitute with 100 ul of water).

Reconstitution Method:

1. Centrifuge at 5,000xg for 5min.
2. Carefully open the tube and add 100ul of sterile water to dissolve the DNA.
3. Close the tube and incubate for 10 minutes at room temperature.
4. Briefly vortex the tube and then do a quick spin (less than 5000xg) to concentrate the liquid at the bottom.
5. Store the suspended plasmid at -20°C. The DNA is stable for at least one year from date of shipping when stored at -20°C.

RefSeq: [NM_032355.2](#), [NP_115731.1](#)

RefSeq Size: 2054 bp

RefSeq ORF: 1959 bp

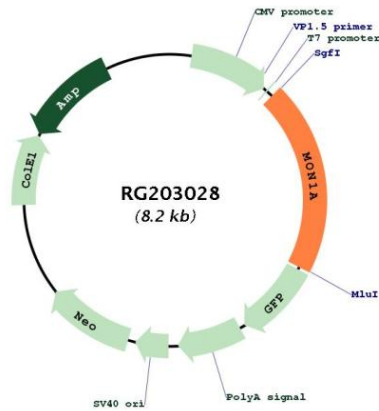
Locus ID: 84315

UniProt ID: [Q86VX9](#)

Cytogenetics: 3p21.31

Gene Summary: Plays an important role in membrane trafficking through the secretory apparatus. Not involved in endocytic trafficking to lysosomes (By similarity). Acts in concert with CCZ1, as a guanine exchange factor (GEF) for RAB7, promotes the exchange of GDP to GTP, converting it from an inactive GDP-bound form into an active GTP-bound form (PubMed:23084991). [UniProtKB/Swiss-Prot Function]

Product images:



Circular map for RG203028