

Product datasheet for **RG202971**

ZKSCAN3 (NM_024493) Human Tagged ORF Clone

Product data:

Product Type:	Expression Plasmids
Product Name:	ZKSCAN3 (NM_024493) Human Tagged ORF Clone
Tag:	TurboGFP
Symbol:	ZKSCAN3
Synonyms:	dj874C20.1; dj874C20.1.; ZF47; zfp-47; Zfp47; ZFP306; ZNF306; ZNF309; ZSCAN13; ZSCAN35
Mammalian Cell Selection:	Neomycin
Vector:	pCMV6-AC-GFP (PS100010)
E. coli Selection:	Ampicillin (100 ug/mL)



[View online »](#)

ORF Nucleotide Sequence:

>RG202971 representing NM_024493
 Red=Cloning site Blue=ORF Green=Tags(s)

TTTTGTAATACGACTCACTATAGGGCGGCCGGAATTCGTCGACTGGATCCGGTACCGAGGAGATCTGCC
 GCC**CGGATCGCC**

ATGGCTAGAGAATTAAGTGAAAGCACAGCCTGGATGCCAGTCTACAGAAGACCAGATGGAGCTTCTGG
 TCATAAAGGTGGAGGAAGAAGAAGCCGGTTTTCCAGTAGCCAGATCTGGGTTCTGAGGGCTCCCGCGA
 GCGCTTCCGAGGCTTCCGCTACCCGAGGCTGCAGGCCCCCGCAGGCGCTGAGTCGCTCCGAGAGCTC
 TGCCGACAGTGGCTGCAGCCTGAGATGCACAGCAAGGAGCAGATCCTGGAGCTGCTGGTCTGGAGCAGT
 TCCTGACCATCCTGCCGGGAATCTGCAGAGCTGGGTGCGGGAGCAGCATCCAGAGAGCGGGGAGGAGGT
 GGTGGTGTATTGGAGTATTTGGAGAGGACAGTGGATGAGCCGGCGCCGAGTTTCAGTGTGGACCAG
 GGGCAAGAACTGCTCTGTTGCAAGATGGCACTATTGACACCAGCCCCAGGGTCACAAAGTAGCCAATTT
 AGCTAATGAAGGCTCTGCTCAAGCATGAATCTGTGGGATCCAGCCTTTACAAGATAGAGTTCTCCAGT
 CCCCATGCTTGCCATGGAGGATGCTGCAGAGAAGATGCAGTGGTAGCTTCTAGGCTTACTCCAGAGTCC
 CAGGGGTTGTTGAAAGTGGAAAGATGTGGCCTGACCCTCACCCCTGAATGGACACAGCAGGATTCATCTC
 AGGGGAATCTCTGTAGAGATGAAAAGCAGGAGAACCATGGCAGCCTGGTCTCCCTGGGTGATGAAAAACA
 GACTAAGAGCAGGGACTTGCCTCCAGCTGAGGAGCTTCCAGAAAAGGAGCATGGGAAGATATCGTGCCAC
 CTGAGAGAAGACATTGCCAGATTCTACATGTGCAGAAGCTGGTGAACAGGAGGGCAGGCTACAAAGAA
 AGCAGAAAAATGCCACAGGAGGGAGGGCGGCACATCTGCCATGAATGTGAAAGAGTTTTGCTCAAAGCTC
 AGGCCTGAGTAAACACAGGAGAAATCCACACTGGTGAAGAACCTACGAATGTGAAGAGTGTGGCAAAGCC
 TTCATTTGGGAGCTCTGCCCTTGTCAATTCATCAGAGAGTCCACACTGGTGAAGAACCATATGAGTGAAG
 AATGTGGTAAGGCCTTCAGTCAATAGCTCAGACCTTATCAAGCATCAGAGAACCACACTGGGAGAAGCC
 CTATGAGTGTGACTGTGGGAAGACCTTCAGCCAGAGCTGCAGCCTCCTTGAACATCACAGAATCCAC
 ACTGGGGAGAAGCCGTATCAGTGCAGTATGTGTGGCAAAGCCTTTAGGCGAAGTTCACATCTCTGAGAC
 ATCAGAGGATCCATACTGGGGATAAAAATGTTCAAGAACCTGAGCAGGGAGAGGCTGAAAAAGTAGGAT
 GGAAAGCCAGTTGAAAAATGTTGAAACTCCCATGTCTTATAAATGTAATGAGTGTGAAAGAAGTTTCACT
 CAGAATACAGGCCTCATTGAACATCAAAAAATCCACACTGGTGAAGAACCTATCAGTGTAAATGCGTGTG
 GAAAAGGCTTACCCGAATTTACATCTGTTCAACATCAGAGAAGCCATGTAGGAAAAACATCTATC
 ACAG

ACGCGTACGCGGCCGCTCGAG - GFP Tag - GTTTAA

Protein Sequence:

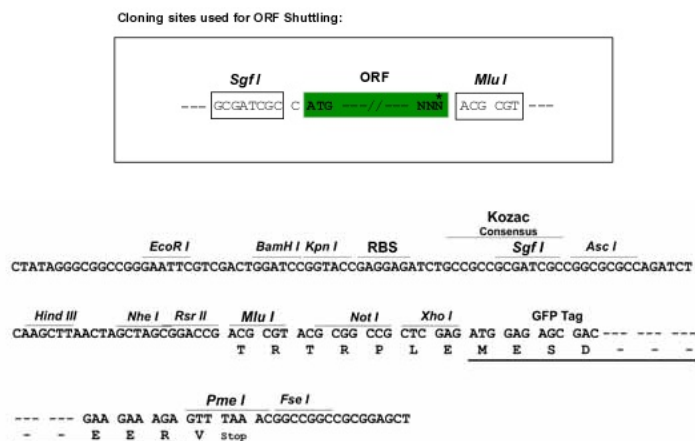
>RG202971 representing NM_024493
 Red=Cloning site Green=Tags(s)

MARELSESTALDAQSTEDQMELLVIKVEEEEAGFPSSPDLGSEGSRERFRGFYPEAAGPREALSRLREL
 CRQWLQPEMSKEQILELLVLEQFLTILPGLQSWVREQHPESGEEVVLLLEYLERQLDEPAPQVSGVDQ
 GQELLCKMALLTPAPGSQSSQFLMKALLKHESVGSQPLQDRVLQVPMLAHGGCCREDAVVASRLTPES
 QGLLKVEDVALTLTPEWTQQDSSQGNLCRDEKQENHGSLSVLDGDEKQTKSRDLPPAEELPEKEHGKISCH
 LREDIAQIPTCAEAGEQEGRLQRKQKNATGRRRHICHECGKSFAQSSGLSKHRIHTGEKPYECEECGKA
 FIGSSALVIHQRVHTGEKPYECEECGKAFSHSSDLIKHQRTHTGEKPYECDDCGKTFSSQCSLLEHHRH
 TGEKPYQCSMCGKAFRRSSHLRHQRIHTGDKNVQEPQGEAWKSRMESQLENVETPMSYKCNECERSFT
 QNTGLIEHQIHTGEKPYQCNAKCGKGFTRISYLVQHQRSVHGKNILSQ

TRTRPLE - GFP Tag - V

Restriction Sites:

Sgfl-Mlul

Cloning Scheme:


ACCN: NM_024493

ORF Size: 1614 bp

OTI Disclaimer: The molecular sequence of this clone aligns with the gene accession number as a point of reference only. However, individual transcript sequences of the same gene can differ through naturally occurring variations (e.g. polymorphisms), each with its own valid existence. This clone is substantially in agreement with the reference, but a complete review of all prevailing variants is recommended prior to use. [More info](#)

OTI Annotation: This clone was engineered to express the complete ORF with an expression tag. Expression varies depending on the nature of the gene.

Components: The ORF clone is ion-exchange column purified and shipped in a 2D barcoded Matrix tube containing 10ug of transfection-ready, dried plasmid DNA (reconstitute with 100 ul of water).

Reconstitution Method:

1. Centrifuge at 5,000xg for 5min.
2. Carefully open the tube and add 100ul of sterile water to dissolve the DNA.
3. Close the tube and incubate for 10 minutes at room temperature.
4. Briefly vortex the tube and then do a quick spin (less than 5000xg) to concentrate the liquid at the bottom.
5. Store the suspended plasmid at -20°C. The DNA is stable for at least one year from date of shipping when stored at -20°C.

RefSeq: [NM_024493.1](#), [NP_077819.1](#)

RefSeq Size: 2242 bp

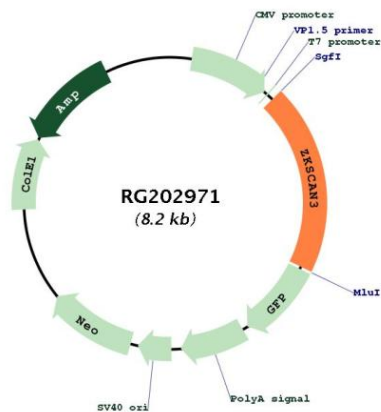
RefSeq ORF: 1617 bp

Locus ID: 80317

UniProt ID: [Q9BRR0](#)

Cytogenetics:	6p22.1
Domains:	KRAB, LER, zf-C2H2
Protein Families:	Transcription Factors
Gene Summary:	Transcriptional factor that binds to the consensus sequence 5'-[GT][AG][AGT]GGGG-3' and acts as a repressor of autophagy. Specifically represses expression of genes involved in autophagy and lysosome biogenesis/function such as MAP1LC3B, ULK1 or WIPI2. Associates with chromatin at the ITGB4 and VEGF promoters. Also acts as a transcription activator and promotes cancer cell progression and/or migration in various tumors and myelomas. [UniProtKB/Swiss-Prot Function]

Product images:



Circular map for RG202971