

Product datasheet for **RG202965**

ADPGK (NM_031284) Human Tagged ORF Clone

Product data:

Product Type:	Expression Plasmids
Product Name:	ADPGK (NM_031284) Human Tagged ORF Clone
Tag:	TurboGFP
Symbol:	ADPGK
Synonyms:	2610017G09Rik; ADP-GK
Mammalian Cell Selection:	Neomycin
Vector:	pCMV6-AC-GFP (PS100010)
E. coli Selection:	Ampicillin (100 ug/mL)



[View online »](#)

ORF Nucleotide Sequence:

>RG202965 representing NM_031284
 Red=Cloning site Blue=ORF Green=Tags(s)

TTTTGTAATACGACTCACTATAGGGCGGCCGGGAATTCGTCGACTGGATCCGGTACCGAGGAGATCTGCC
 GCC**CGCATCGCC**

ATGGCGCTGTGGCGGGCTCCGCGTACGCGGGCTTCTGGCGCTGGCCGTGGGCTGCGTCTTCTGTCTGG
 AGCCAGAGCTGCCAGGCTCGGCGCTGCGTCTCTCTGGAGCTCGTGTGTCTGGGCCCGCGCCTGCGCC
 CCCGGGACCCGTCTCCCCGAGGGCCGGTTGGCGGCAGCCTGGGACGCGTTATCGTGGCCAGTCCGG
 CGCTGGCGCCGCGTGGCAGTGGGAGTCAATGCATGTGTTGATGTGGTGTCTCAGGGGTGAAGCTTTGC
 AGGCACCTGGCCTTAGTCTGGGAATGGAAAGATCACAGCATTCTGCATTCAAGGAATGATCTGGAAGA
 AGCCTTCATTCATTTGCGGAAGGGAGCAGTGTGAGCGCTTCTCAGTGATAAGGAAACTTTTCAC
 GACATTGCCAGGTTGCGTCAGAGTTCCAGGAGCCAGCACTATGTAGGAGGAAATGCAGCTTTAATTG
 GACAGAAATTTGCAGCCAACTCAGATTTAAAGGTTCTTCTTTGCGGTCCAGTTGGTCCAAAGCTACATGA
 GCTTCTTGATGACAATGTCTTTGTTCCACCAGAGTCATTGCAGGAAGTGGATGAGTTCCACCTCATTTTA
 GAGTATCAAGCAGGGGAGGAGTGGGGCCAGTAAAAGCTCCCATGCCAACCGATTATCTTCTCTCAGC
 ACCTCTCCAACGGGGCCATGAATATGCTGGAGGTGTTTGTGTCTAGCCTGGAGGATTTACGCCAGACCT
 GGTGGTCTCTCTGGATTGCACATGATGGAGGGACAAAGCAAGGAGCTCCAGAGGAAGAGACTCTTGGAG
 GTTGTAACCTCCATTTCTGACATCCCCACTGGTATTCCAGTTCACCTAGAGCTGGCCAGTATGACTAACA
 GGGAGCTCATGAGCAGCATTGTCATCAGCAGGCTTTCCCGGGTGACTTCCCTTGGGCTGAATGAACA
 GGAGCTGTTATTTCTACCCAGTCAGCCTCTGGACCTCACTTCTCTCTTCTTCTTCTTCTTCTTCTTCT
 GATGTGGGCATGGTCAGTGACATCCTCTTCTGGATCTTAAAGAACATGGGAGGAGTAAAAGCAGAGCCT
 CGGATCTCACCAGGATCCATTTCCACACGCTGGTCTACCACATCTGGCAACTGTGGATGGACACTGGGC
 CAACCAGCTGGCAGCCGTGGCTGCAGGAGCTCGTGTGGCTGGGACACAGGCCTGCCACAGAAACCATA
 GACACCAGCCGAGTGTCTCTGAGGGCACCCCAAGATTGACTTCCATTCCGAGGCAGGCTCCAGGA
 TTGTATTAACCCAAACAAGCCAGTAGTAGAATGGCACAGAGAGGGAATATCCTTCCACTTCACACCAGT
 ATTGGTGTGTAAGACCCCATTCGAACTGTAGGCCTTGGAGATGCCATTTAGCCGAAGGACTCTTCTAT
 TCGGAAGTACACCCTCACTAT

ACGCGTACGCGGCCGCTCGAG – GFP Tag – GTTTAA

Protein Sequence:

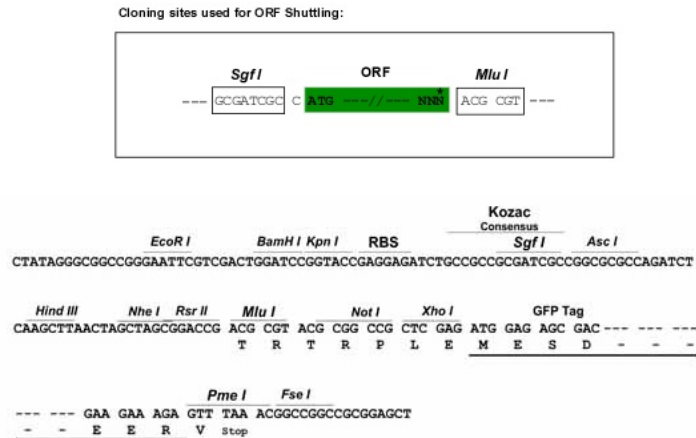
>RG202965 representing NM_031284
 Red=Cloning site Green=Tags(s)

MALWRGSAYAGFLALAVGCVFLLEPELPGSALRSLWSSLCLGPAPAPPGPVSPGRLAAAWDALIVRPVR
 RWRRVAVGVNACVDVVL SGVKLLQALGLSPGNGKDHSILHSRNDLEEF IHFMGKGAAAERFFSDKETFH
 DIAQVASEFPGAQHYVGGNAALIGQKFAANSDLKVLCCGPVGPKLHELLDDNVFVPPELQEVDEFHLIL
 EYQAGEEWGQLKAPHANRFIFSHDLSNGAMNMLEVFVSSLEEFQPDLVVLSGLHMMEGQSKELQRKRLLE
 VVTSISDIPTGIPVHLELASMTNRELMSSIVHQVFPVAVTSLGLNEQELLFLTQSASGPHSSLSSWNGVP
 DVMVSDILFWILKEHGRSKSRASDLTRIFHTLVYHILATVDGHWANQLAAVAAGARVAGTQACATETI
 DTSRVSLRAPQEFMTSHSEAGSRIVLNPKNPVVEWHREGISFHFTPVLVCKDPIRTVGLGDAISAEGLFY
 SEVHPHY

TRTRPLE – GFP Tag – V

Restriction Sites:

Sgfl-Mlul

Cloning Scheme:


ACCN: NM_031284

ORF Size: 1491 bp

OTI Disclaimer: The molecular sequence of this clone aligns with the gene accession number as a point of reference only. However, individual transcript sequences of the same gene can differ through naturally occurring variations (e.g. polymorphisms), each with its own valid existence. This clone is substantially in agreement with the reference, but a complete review of all prevailing variants is recommended prior to use. [More info](#)

OTI Annotation: This clone was engineered to express the complete ORF with an expression tag. Expression varies depending on the nature of the gene.

Components: The ORF clone is ion-exchange column purified and shipped in a 2D barcoded Matrix tube containing 10ug of transfection-ready, dried plasmid DNA (reconstitute with 100 ul of water).

Reconstitution Method:

1. Centrifuge at 5,000xg for 5min.
2. Carefully open the tube and add 100ul of sterile water to dissolve the DNA.
3. Close the tube and incubate for 10 minutes at room temperature.
4. Briefly vortex the tube and then do a quick spin (less than 5000xg) to concentrate the liquid at the bottom.
5. Store the suspended plasmid at -20°C. The DNA is stable for at least one year from date of shipping when stored at -20°C.

Note: Plasmids are not sterile. For experiments where strict sterility is required, filtration with 0.22um filter is required.

RefSeq: [NM_031284.3](#), [NP_112574.3](#)

RefSeq Size: 2492 bp

RefSeq ORF: 1491 bp

Locus ID: 83440

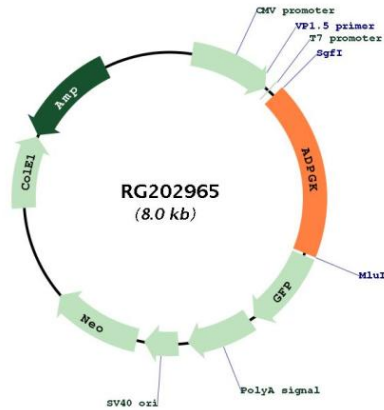
UniProt ID: [Q9BRR6](#)

Cytogenetics: 15q24.1

Domains: ADP_PFK_GK

Gene Summary: ADPGK (EC 2.7.1.147) catalyzes the ADP-dependent phosphorylation of glucose to glucose-6-phosphate and may play a role in glycolysis, possibly during ischemic conditions (Ronimus and Morgan, 2004 [PubMed 14975750]).[supplied by OMIM, Mar 2008]

Product images:



Circular map for RG202965