

## Product datasheet for **RG202951**

### Syntaxin 6 (STX6) (NM\_005819) Human Tagged ORF Clone

#### Product data:

**Product Type:** Expression Plasmids  
**Product Name:** Syntaxin 6 (STX6) (NM\_005819) Human Tagged ORF Clone  
**Tag:** TurboGFP  
**Symbol:** Syntaxin 6  
**Mammalian Cell Selection:** Neomycin  
**Vector:** pCMV6-AC-GFP (PS100010)  
**E. coli Selection:** Ampicillin (100 ug/mL)  
**ORF Nucleotide Sequence:** >RG202951 representing NM\_005819  
 Red=Cloning site Blue=ORF Green=Tags(s)

TTTTGTAATACGACTCACTATAGGGCGGCCGGGAATTCGTCGACTGGATCCGGTACCGAGGAGATCTGCC  
 GCC**CGATCGCC**

ATGTCCATGGAGGACCCCTTCTTTGTGGTCAAAGGAGAGGTACAGAAAGCAGTCAACTGCCAGGGAT  
 TGTTTCAGAGATGGACAGAGCTCCTCCAGGACCCCTCCACAGCAACAAGGGAAGAAATCGACTGGACCAC  
 CAACGAGCTGAGAAATAACCTCCGGAGCATAGAGTGGGATCTAGAGGACCTTGATGAAACCATCAGCATA  
 GTTGAAGCAAATCCTAGAAAATTAACCTTGATGCAACTGAATTGAGTATAAGAAAAGCCTTCATTACAA  
 GTACTCGGCAAGTTGTGAGGACATGAAAGATCAGATGTCAACTCATCTGTGCAGGCATTAGCTGAAAG  
 AAAAAATAGACAGGCACTGCTGGGAGACAGTGGCAGCCAGAAGTGGAGCACTGGAACAACAGATAAATAT  
 GGGCGTCTGGACCGAGAGCTCCAGAGAGCCAATTCTCATTTCATTGAGGAGCAGCAGGCACAGCAGCAGT  
 TGATCGTGAACAGCAGGATGAGCAGTTGGAGCTGGTCTCTGGCAGCATCGGGGTCTGAAGAACATGTC  
 CCAGCGCATCGGAGGGGAGCTGGAGGAACAGGCAGTTATGTTGGAAGATTTCTCTCACGAATTGGAGAGC  
 ACTCAGTCCCGGCTGGACAATGTGATGAAGAACTTGCAAAAGTATCTCATATGACCAGTGATCGGCGCC  
 AATGGTGTCCATAGCCATCCTCTTTCAGTCTGTTGGTTGTGCTCATCCTCTTCTTAGTGCTG

**ACGCGTACGCGGCCGCTCGAG** - GFP Tag - GTTTAA

**Protein Sequence:** >RG202951 representing NM\_005819  
 Red=Cloning site Green=Tags(s)

MSMEDPFFVVKGEVQKAVNTAQGLFQRWTELLQDPSTATREEIDWTTNELRNLRNLSIEWDLEDLDETISI  
 VEANPRKFNLDATELSIRKAFITSTRQVVRDMKQDMSTSSVQALAEKRNQALLGDSGSQNWSTGTTDKY  
 GRLDRELQRANSHFIEEQQAQQQLIVEQQDEQLELVSGSIGVLKNMSQRIGGELEEQAVMLEDFSHELES  
 TQSRLDNVMKKLAKVSHMTSDRRQWCAIAILFAVLLVVLILFLVL

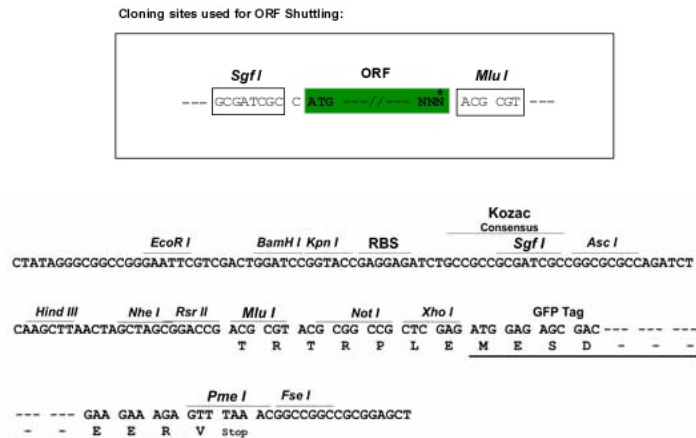
**TRTRPLE** - GFP Tag - V



[View online »](#)

**Restriction Sites:** SgfI-MluI

**Cloning Scheme:**



**ACCN:** NM\_005819

**ORF Size:** 765 bp

**OTI Disclaimer:** The molecular sequence of this clone aligns with the gene accession number as a point of reference only. However, individual transcript sequences of the same gene can differ through naturally occurring variations (e.g. polymorphisms), each with its own valid existence. This clone is substantially in agreement with the reference, but a complete review of all prevailing variants is recommended prior to use. [More info](#)

**OTI Annotation:** This clone was engineered to express the complete ORF with an expression tag. Expression varies depending on the nature of the gene.

**Components:** The ORF clone is ion-exchange column purified and shipped in a 2D barcoded Matrix tube containing 10ug of transfection-ready, dried plasmid DNA (reconstitute with 100 ul of water).

**Reconstitution Method:**

1. Centrifuge at 5,000xg for 5min.
2. Carefully open the tube and add 100ul of sterile water to dissolve the DNA.
3. Close the tube and incubate for 10 minutes at room temperature.
4. Briefly vortex the tube and then do a quick spin (less than 5000xg) to concentrate the liquid at the bottom.
5. Store the suspended plasmid at -20°C. The DNA is stable for at least one year from date of shipping when stored at -20°C.

**RefSeq:** [NM\\_005819.6](#)

**RefSeq Size:** 4548 bp

**RefSeq ORF:** 768 bp

**Locus ID:** 10228

**UniProt ID:** [O43752](#)

Cytogenetics: 1q25.3

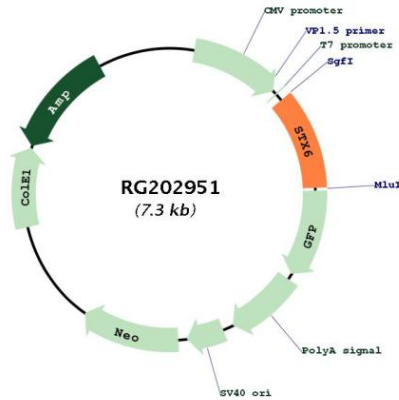
Domains: t\_SNARE

Protein Families: Druggable Genome, Transmembrane

Protein Pathways: SNARE interactions in vesicular transport

Gene Summary: Involved in intracellular vesicle trafficking.[UniProtKB/Swiss-Prot Function]

**Product images:**



Circular map for RG202951