

Product datasheet for **RG202950**

WHIP (WRNIP1) (NM_130395) Human Tagged ORF Clone

Product data:

Product Type:	Expression Plasmids
Product Name:	WHIP (WRNIP1) (NM_130395) Human Tagged ORF Clone
Tag:	TurboGFP
Symbol:	WRNIP1
Synonyms:	bA420G6.2; CFAP93; FAP93; WHIP
Mammalian Cell Selection:	Neomycin
Vector:	pCMV6-AC-GFP (PS100010)
E. coli Selection:	Ampicillin (100 ug/mL)



[View online »](#)

ORF Nucleotide Sequence:

>RG202950 representing NM_130395
 Red=Cloning site Blue=ORF Green=Tags(s)

TTTTGTAATACGACTCACTATAGGGCGGCCGGAATTCGTCGACTGGATCCGGTACCGAGGAGATCTGCC
 GCC**CGCATCGCC**

ATGGAGGTGAGCGGGCCGAAGACGACCCCTTCCTTCGAGCTGCACCAGGTGCAGTGCCCGTGTGCC
 AGCAGATGATGCCCGCCGCGACATCAACTCGACCTGGACCGCTGTCTGCTGCCACCCGGCGGGCA
 CGCGGAGCCCGCGCGGGTTCGACCGCGCCGGGAGCGGGCAAGGGGCCCTCGCCGCCGCGCCAAG
 AGGCGGGCTGTTCGAGAGCTCGGCGCTGAAGCAGCCAGCCACCCGACGGCAGCCGAGAGCAGTGAGG
 GCGAGGGCGAGGAGGGGACGACGGCGGCGAGACCAGAGCCGCGAGAGCTACGACGCGCCGCCACACC
 CAGCGCGCCCGCCTTATCCCGACTTCCCGTGGCCCGCTCCAGCAGCCCGGGAGGAAGGGTTCGGGG
 AAGAGGCCGGCGCCGCCCGCGGGGAGCGCGTCTCCGCGCAGCTGGGACGAGGCGGAGGCGCAGG
 AGGAGGAGGAGGCGTGGGCGACGGCGATGGCGACGGGGACGCGGACGCGGACGGCGAGGACGCCGGG
 GCACTGGGACCGGACGCTGCCAAGCCGCCACCGCCTTCGGGGCCAGCGCGGGGGCCGCCGCCACCCC
 CGGGCGCTGGCTGCCGAGGAGATCCGACAGATGCTACAGGGCAAGCCGCTGGCCGACACGATGCGTCCTG
 ACACGCTGCAGGATTACTTCGGGACAGCAAGGCCGTTGGCCAGGATACCTGCTGCGCTCGCTCCTGGA
 GACCAACGAAATCCCCTCGCTTATCCTGTGGGGCCGCCGGGCTGCGGCAAGACCACTCTGGCTCACATC
 ATAGCCAGCAACGAAAGAAACATAGCATAAGGTTTGTGACATTATCTGCAACAAATGCCAAGACAAATG
 ATGTGCGAGATGTCATAAAACAAGCTCAAAATGAAAAGAGCTTTTTCAAAGGAAAACCATCCTTTTTAT
 TGATGAGATTCATCGTTCAATAATCTCAGCAGGTCAACGCTGCTCTTCTGAGCCGCTGTCGAGTGATT
 GTTCTTGAGAAGCTTCCAGTAGAGGCAATGGTACTATTTAATGCGAGCGATCAACTCCCTGGGAATCC
 ACGTCTAGACTTAGCCGTCCCACTGACCCCTGAGCCACAGCAGCAACAGCAGCTCAGAGCCGCCAT
 GTTCATAGAGGATAAAGCAGTAGACACCCCTGGCTTACCTCAGTGACGGTGACGCCCGAGCTGGGTTGAAC
 GGACTGCAGCTGGCGGTGCTGGCTAGGTTAAGCTCTAGGAAGATGTTCTGTAAGAAGAGTGGCAATCCT
 ATTCTCCAGTAGAGTTCTGATCACAGAGAATGACGTGAAGGAGGGCCTACAGCGATCCCACATTTTATA
 TGACCGGGCAGGTGAGGAGCATTACAATGCATCTCCGCCCTGCACAAGTCCATGCGGGGCTCAGACCAG
 AACGCCTCCCTCTACTGGCTGGCTCGCATGCTCGAGGGAGGAGAGGCCACTCTACGTGGCAGGAGGC
 TTGTCAGGTTTGCACGAGGACATAGGCTGGCAGACCCGCTCGGTTAACACAAGCGGTTGCTGCCTA
 CCAAGGCTGTCAATTTATAGGCATGCCTGAATGTGAGGTGCTTCTGGCCAGTGTGTGGTCTACTTTGCC
 AGAGCCCCAAAGTCCATTGAGGTGTACAGCGCCTACAACAACGTCAAAGCCTGCCTGAGGAACCACCAGG
 GGCCACTGCCCCCGTGCCTGACCTGAGGAACGCGCCCACTAGGCTGATGAAGGATTTGGGCTATGG
 CAAAGGCTACAAGTACAACCCATGTACAGCGAGCCTGTGGATCAGGAGTACCTGCCTGAAGAGTTGAGG
 GGGTAGATTTCTCAAGCAGAGGAGGTGC

ACGCGTACGCGGGCCGCTCGAG - GFP Tag - GTTTAA

Protein Sequence:

>RG202950 representing NM_130395
 Red=Cloning site Green=Tags(s)

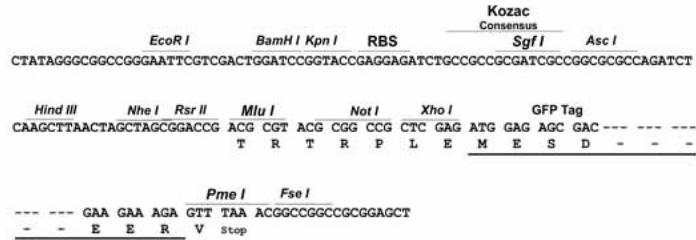
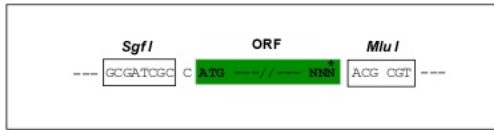
MEVSGPEDDPFLSQLHQVQCPVCQQMPPAAHINSHLDRCLLLHPAGHAEPAAAGSHRAGERAKGPSPPGAK
 RRRLESSALKQPATPTAAESSEGEEGEDDGGETE SRESYDAPPTPSGARLIPDFVVARSSSPGRKGS
 KRPAAGAAAGSASPRSWDEAEAEQEEEEAVGDGDGDADADGEDDPGHWDADAAEATAFGASGGGRPH
 RALAAEIRQMLQGKPLADTMRPDTLQDYFGQSKAVGQDTLLRSLLETNEIPSLILWGPPGCGKTLAHI
 IASNSKKHSIRFVTLSATNAKTNDVRDVIKQAQNEKSFVKRKTILFIDEIHRFNKSQQVNAALLSRCRVI
 VLEKLPVEAMVITLMRAINSLGIHVLDSRPTDPLSHSSNSSSEPAMFIEDKAVDTLAYLSDGDARAGLN
 GLQLAVLARLSSRKMFCCKSGQSYSPSRVILITENDVKEGLQRSHILYDRAGEEHYNCISALHKSMRSDQ
 NASLYWLARMLEGGEDPLYVARRLVRFASEDIGLADPSALTQAVAAAYQGCHFIGMPECEVLLAQCVVYFA
 RAPKSIIEVYSAYNNVKACLRNHQGPLPPVPLHLRNAPTRLMKDLGYGKGYKNPMYSEPVQDEYLPEELR
 GVDFFKQRRRC

TRTRPLE - GFP Tag - V

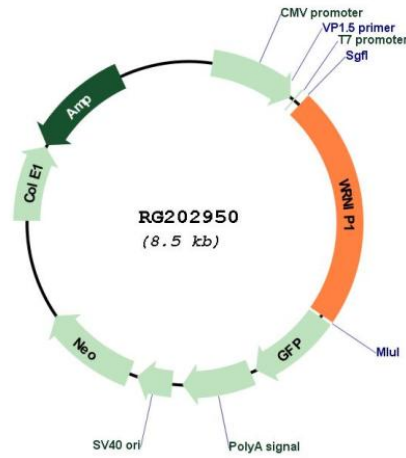
Restriction Sites: SgfI-MluI

Cloning Scheme:

Cloning sites used for ORF Shutting:



Plasmid Map:



ACCN: NM_130395

ORF Size: 1920 bp

OTI Disclaimer:	The molecular sequence of this clone aligns with the gene accession number as a point of reference only. However, individual transcript sequences of the same gene can differ through naturally occurring variations (e.g. polymorphisms), each with its own valid existence. This clone is substantially in agreement with the reference, but a complete review of all prevailing variants is recommended prior to use. More info
OTI Annotation:	This clone was engineered to express the complete ORF with an expression tag. Expression varies depending on the nature of the gene.
Components:	The ORF clone is ion-exchange column purified and shipped in a 2D barcoded Matrix tube containing 10ug of transfection-ready, dried plasmid DNA (reconstitute with 100 ul of water).
Reconstitution Method:	<ol style="list-style-type: none">1. Centrifuge at 5,000xg for 5min.2. Carefully open the tube and add 100ul of sterile water to dissolve the DNA.3. Close the tube and incubate for 10 minutes at room temperature.4. Briefly vortex the tube and then do a quick spin (less than 5000xg) to concentrate the liquid at the bottom.5. Store the suspended plasmid at -20°C. The DNA is stable for at least one year from date of shipping when stored at -20°C.
RefSeq:	NM_130395.1 , NP_569079.1
RefSeq Size:	2592 bp
RefSeq ORF:	1923 bp
Locus ID:	56897
UniProt ID:	Q96S55
Cytogenetics:	6p25.2
Domains:	AAA, AAA, ZnF_Rad18
Gene Summary:	Werner's syndrome is a rare autosomal recessive disorder characterized by accelerated aging that is caused by defects in the Werner syndrome ATP-dependent helicase gene (WRN). The protein encoded by this gene interacts with the exonuclease-containing N-terminal portion of the Werner protein. This protein has a ubiquitin-binding zinc-finger domain in the N-terminus, an ATPase domain, and two leucine zipper motifs in the C-terminus. It has sequence similarity to replication factor C family proteins and is conserved from E. coli to human. This protein likely accumulates at sites of DNA damage by interacting with polyubiquitinated proteins and also binds to DNA polymerase delta and increases the initiation frequency of DNA polymerase delta-mediated DNA synthesis. This protein also interacts with nucleoporins at nuclear pore complexes. Two transcript variants encoding different isoforms have been isolated for this gene. [provided by RefSeq, Jul 2012]