

## Product datasheet for **RG202946**

### **GORASP2 (NM\_015530) Human Tagged ORF Clone**

#### **Product data:**

Product Type:	Expression Plasmids
Product Name:	GORASP2 (NM_015530) Human Tagged ORF Clone
Tag:	TurboGFP
Symbol:	GORASP2
Synonyms:	GOLPH6; GRASP55; GRS2; p59
Mammalian Cell Selection:	Neomycin
Vector:	pCMV6-AC-GFP (PS100010)
E. coli Selection:	Ampicillin (100 ug/mL)



[View online »](#)

**ORF Nucleotide Sequence:**

>RG202946 representing NM\_015530  
 Red=Cloning site Blue=ORF Green=Tags(s)

TTTTGTAATACGACTCACTATAGGGCGGCCGGGAATTCGTCGACTGGATCCGGTACCGAGGAGATCTGCC  
 GCC**CGGATCGCC**

ATGGGCTCCTCGCAAAGCGTCGAGATCCCGGGCGGGGCACCGAGGGCTACCACGTTCTGCGGGTACAAG  
 AAAATTCGCCAGGACACAGAGCTGGTTTGGAGCCTTTCTTTGATTTTATTGTTTCTATTAATGGTTCAAG  
 ATTAATAAAGACAATGACACTCTTAAGGATCTGCTGAAAGCAAACGTTGAAAAGCCTGTAAGATGCTT  
 ATCTATAGCAGCAAAACATTGGAAGTGCAGAGACCTCAGTCACACCAAGTAACCTGTGGGGCGCCAGG  
 GCTTATTGGGAGTGAGCATTCTGTTTCTGCAGCTTTGATGGGGCAAATGAAAATGTTTGGCATGTCTGGA  
 GGTGGAATCAAATTCCTGCAGCACTGGCAGGTCTTAGACCACACAGTGATTATATAATTGGAGCAGAT  
 ACAGTCATGAATGAGTCTGAAGATCTATTCAGCCTTATCGAAACACATGAAGCAAACCATTGAACTGT  
 ATGTGTACAACACAGACTGATAACTGTGCGAAGTATTATTACACCAAAATTCGCATGGGGTGGAGA  
 AGGCAGCCTAGGATGTGGCATTGGATATGGTTATTTGCATCGAATACCTACACGCCCATTTGAGGAAGGA  
 AAGAAAATTTCTCTCCAGGACAAATGGCTGGTACACCTATTACACCTCTTAAAGATGGGTTTACAGAGG  
 TCCAGCTGTCTCAGTTAATCCCCCGTCTTTGTACCACCAGGAACCTACAGGAATTGAACAGAGTCTGAC  
 TGGACTTTCTATTAGCTCAACTCCACCAGCTGTGAGTAGTGTCTCAGTACAGGTGTACCAACAGTACCG  
 TTATTGCCACCACAAGTAAACCAGTCCCTCACTTCTGTGCCACCAATGAATCCAGCTACTACATTACCAG  
 GTCTGATGCCTTTACCAGCAGGACTGCCAACCTCCCCAACCTCAACCTCAACCTCCCAGCACCACACAT  
 CATGCCAGGGTGGCTTACCAGAACTTGTAACCAGGTCTGCCACCTCTTCTCCATGCCTCCCCGA  
 AACTTACTGGCATTGCACCTCTCCCCTGCCATCCGAGTTCCTCCCGTCATTCCCCTGGTTCCAGAGA  
 GCTCTTCTGCAGCAAGCTCAGGAGAGCTGCTGTCTTCCCTCCCGCCACCAGCAACGCCCTCTGACCC  
 TGCCACAACACTGCAAAGGCAGACGCTGCCTCCTCACTCACTGTGGATGTGACGCCCCCACTGCCAAG  
 GCCCCACCACCGTTGAGGACAGAGTCGGCGACTCCACCCAGTCAGCGAGAAGCCTGTTTCTGCGGCTG  
 TGGATGCCAATGCTTCTGAGTCACCT

**ACGCGT**ACGCGGCCGCTCGAG – GFP Tag – GTTTAA

**Protein Sequence:**

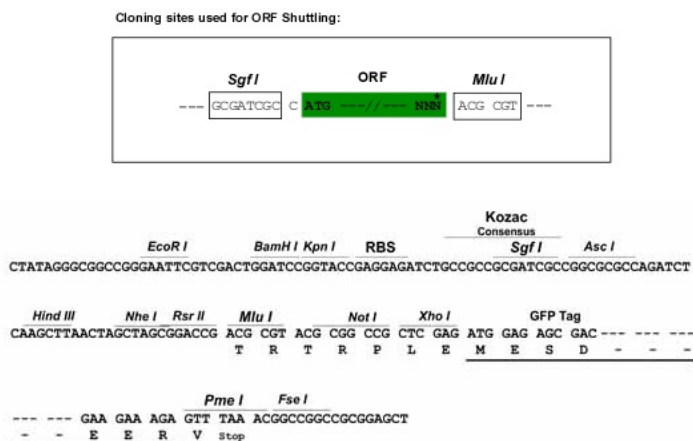
>RG202946 representing NM\_015530  
 Red=Cloning site Green=Tags(s)

MGSSQSVEIPGGGTEGYHVLRVQENSPGHRAGLEPFFDFIVSINGSRLNKDNDTLKDLLKANVEKPVKML  
 IYSSKTLELRETSVTPSNLWGGQGLLGVSRFCDFGANENVWHVLEVESNSPAALAGLRPHSDYIIGAD  
 TVMNESEDLFSLIETHEAKPLKLYVYNTDNDNCREVIIIPNSAWGGEGLGCGIGYGLHRIPTRPFEEG  
 KKIISLPGQMAGTPIITPLKDGFTVQLSSVNPPSLSPPGTTGIEQSLTGLSISSTPPAVSSVLSTGVPTVP  
 LLPPQVNSLTSVPPMNPATTLPLMLPLPAGLPNLNLPAPHIMPVGLPELVNPLPLPSMPPR  
 NLPPIAPLPLPSEFLPSFPLVPESSAASSGELLSSLPPTSNAPSDPATTAKADAASSLTVDVTPPTAK  
 APTTVEDRVGDSTPVSEKPVSAAVDANASESP

**TRTRPLE** – GFP Tag – V

**Restriction Sites:**

SgfI-MluI

**Cloning Scheme:**


**ACCN:** NM\_015530

**ORF Size:** 1356 bp

**OTI Disclaimer:** The molecular sequence of this clone aligns with the gene accession number as a point of reference only. However, individual transcript sequences of the same gene can differ through naturally occurring variations (e.g. polymorphisms), each with its own valid existence. This clone is substantially in agreement with the reference, but a complete review of all prevailing variants is recommended prior to use. [More info](#)

**OTI Annotation:** This clone was engineered to express the complete ORF with an expression tag. Expression varies depending on the nature of the gene.

**Components:** The ORF clone is ion-exchange column purified and shipped in a 2D barcoded Matrix tube containing 10ug of transfection-ready, dried plasmid DNA (reconstitute with 100 ul of water).

**Reconstitution Method:**

1. Centrifuge at 5,000xg for 5min.
2. Carefully open the tube and add 100ul of sterile water to dissolve the DNA.
3. Close the tube and incubate for 10 minutes at room temperature.
4. Briefly vortex the tube and then do a quick spin (less than 5000xg) to concentrate the liquid at the bottom.
5. Store the suspended plasmid at -20°C. The DNA is stable for at least one year from date of shipping when stored at -20°C.

**RefSeq:** [NM\\_015530.3](#), [NP\\_056345.3](#)

**RefSeq Size:** 2504 bp

**RefSeq ORF:** 1359 bp

**Locus ID:** 26003

**UniProt ID:** [Q9H8Y8](#)

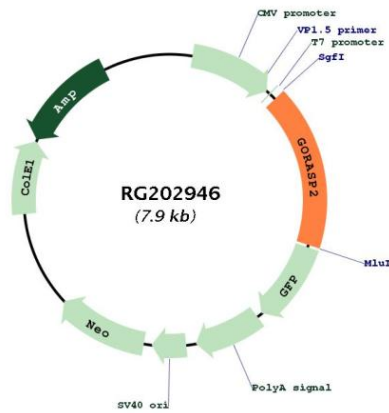
**Cytogenetics:** 2q31.1

**Domains:** GRASP55\_65

**Protein Families:** Druggable Genome

**Gene Summary:** This gene encodes a member of the Golgi reassembly stacking protein family. These proteins may play a role in the stacking of Golgi cisternae and Golgi ribbon formation, as well as Golgi fragmentation during apoptosis or mitosis. The encoded protein also plays a role in the intracellular transport of transforming growth factor alpha and may function as a molecular chaperone. A pseudogene of this gene is located on the short arm of chromosome 2. Alternatively spliced transcript variants encoding multiple isoforms have been observed for this gene. [provided by RefSeq, Jan 2011]

**Product images:**



Circular map for RG202946