

## Product datasheet for **RG202936**

### CLN8 (NM\_018941) Human Tagged ORF Clone

#### Product data:

Product Type:	Expression Plasmids
Product Name:	CLN8 (NM_018941) Human Tagged ORF Clone
Tag:	TurboGFP
Symbol:	CLN8
Synonyms:	C8orf61; EPMR; TLCD6
Mammalian Cell Selection:	Neomycin
Vector:	pCMV6-AC-GFP (PS100010)
E. coli Selection:	Ampicillin (100 ug/mL)
ORF Nucleotide Sequence:	>RG202936 representing NM_018941 Red=Cloning site Blue=ORF Green=Tags(s)

TTTTGTAATACGACTCACTATAGGGCGCCGGGAATTCGTCGACTGGATCCGGTACCGAGGAGATCTGCC  
GCC**CGATCGCC**

ATGAATCCTGCGAGCGATGGGGGCACATCAGAGAGCATTTTTGACCTGGACTATGCATCCTGGGGATCC  
GCTCCACGCTGATGGTCGCTGGCTTTGTCTTACTTGGGCGTCTTTGGTCTGCCACCAGCTGTCCTC  
TTCCCTGAATGCCACTTACCGTTCTTTGGTGGCCAGAGAGAAGGTCTTCTGGACCTGGCGCCACGCGT  
GCAGTCTTTGGTGTTCAGAGCACAGCCGACGGCCTGTGGGCTCTGCTGGGGACCCTGTGCTGCATGCCG  
ACAAGGCGCGTGGCCAGCAGAACTGGTGTGGTTTACATCACGACAGCAACGGGATTCTTTGCTTTGA  
AAATGTTGCAGTCCACCTGTCCAATGATCTTCCGGACATTTGACTTGTCTGTTATCCACCATCTC  
TTTGCCTTTCTTGGGTTTCTTGGCTGCTTGGTCAATCTCCAAGCTGGCCACTATCTAGCTATGACCACGT  
TGCTCCTGGAGATGAGCACGCCCTTACCTGCGTTTCTGGATGCTCTTAAAGGCGGGCTGGTCCGAGTC  
TCTGTTTTGGAAGCTCAACCAGTGGCTGATGATTCACATGTTTCACTGCCGATGGTTCTAACCTACCAC  
ATGTGGTGGTGTGTTTCTGGCACTGGGACGGCCTGGTCAGCAGCCTGTATCTGCCTCATTTGACTGT  
TCCTTGTCCGACTGGCTCTGCTTACGCTAATCATTAAATCCATATTGGACCATAAGAAGACTCAGCAGCT  
TCTCAATCCGGTGGACTGGAACCTTGCACAGCCAGAAGCCAAGAGCAGGCCAGAAGGCAACGGGCAGCTG  
CTGCGGAAGAAGAGGCCA

AG**CGGACCG**ACGCGTACGCGGCCGCTCGAG - GFP Tag - GTTTAA



[View online »](#)

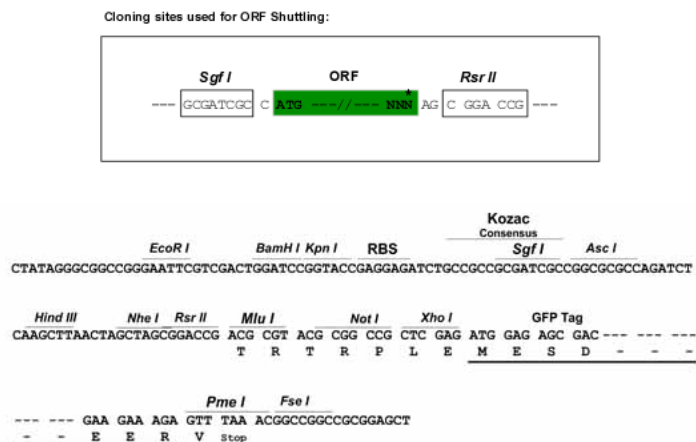
**Protein Sequence:** >RG202936 representing NM\_018941  
Red=Cloning site Green=Tags(s)

MNPASDGGTSESIFDLDYASWGIRSTLMVAGVFVYLVGVFVCHQLSSSLNATYRSLVAREKVFWDLAATR  
 AVFGVQSTAAGLWALLGDPVLHADKARGQQNWCWFHITTATGFFCFENVAVHLSNLI FRTFDLFLVIHHL  
 FAFLGFLGCLVNLQAGHYLAMTTLLLEMSTPFTCVSWMLLKAGWSESLFWKLNQWLMIHMFHCRMVLT YH  
 MWWWCFWHWDGLVSSLYLPHLTLFLVGLALLTLIINPYWTHKKTQQLLNPDVWNFAQPEAKSRPEGNQQL  
 LRKKRP

SGPTRRRLE - GFP Tag - V

**Restriction Sites:** SgfI-RsrII

**Cloning Scheme:**



**ACCN:** NM\_018941

**ORF Size:** 858 bp

**OTI Disclaimer:** The molecular sequence of this clone aligns with the gene accession number as a point of reference only. However, individual transcript sequences of the same gene can differ through naturally occurring variations (e.g. polymorphisms), each with its own valid existence. This clone is substantially in agreement with the reference, but a complete review of all prevailing variants is recommended prior to use. [More info](#)

**OTI Annotation:** This clone was engineered to express the complete ORF with an expression tag. Expression varies depending on the nature of the gene.

**Components:** The ORF clone is ion-exchange column purified and shipped in a 2D barcoded Matrix tube containing 10ug of transfection-ready, dried plasmid DNA (reconstitute with 100 ul of water).

**Reconstitution Method:**

1. Centrifuge at 5,000xg for 5min.
2. Carefully open the tube and add 100ul of sterile water to dissolve the DNA.
3. Close the tube and incubate for 10 minutes at room temperature.
4. Briefly vortex the tube and then do a quick spin (less than 5000xg) to concentrate the liquid at the bottom.
5. Store the suspended plasmid at -20°C. The DNA is stable for at least one year from date of shipping when stored at -20°C.

**RefSeq:** [NM\\_018941.4](#)

**RefSeq Size:** 4817 bp

**RefSeq ORF:** 861 bp

**Locus ID:** 2055

**UniProt ID:** [Q9UBY8](#)

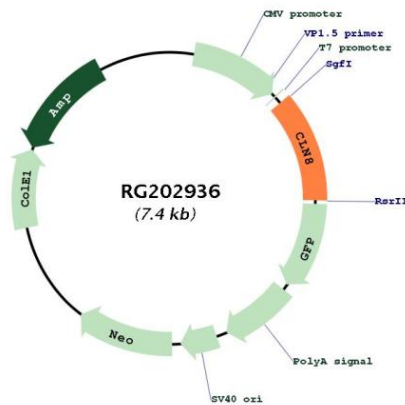
**Cytogenetics:** 8p23.3

**Domains:** TLC

**Protein Families:** Druggable Genome, Transmembrane

**Gene Summary:** This gene encodes a transmembrane protein belonging to a family of proteins containing TLC domains, which are postulated to function in lipid synthesis, transport, or sensing. The protein localizes to the endoplasmic reticulum (ER), and may recycle between the ER and ER-Golgi intermediate compartment. Mutations in this gene are associated with a disorder characterized by progressive epilepsy with cognitive disabilities (EPMR), which is a subtype of neuronal ceroid lipofuscinoses (NCL). Patients with mutations in this gene have altered levels of sphingolipid and phospholipids in the brain. [provided by RefSeq, Jul 2017]

## Product images:



Circular map for RG202936