

Product datasheet for **RG202927**

RRAD (NM_004165) Human Tagged ORF Clone

Product data:

Product Type:	Expression Plasmids
Product Name:	RRAD (NM_004165) Human Tagged ORF Clone
Tag:	TurboGFP
Symbol:	RRAD
Synonyms:	RAD; RAD1; REM3
Mammalian Cell Selection:	Neomycin
Vector:	pCMV6-AC-GFP (PS100010)
E. coli Selection:	Ampicillin (100 ug/mL)
ORF Nucleotide Sequence:	>RG202927 representing NM_004165 Red=Cloning site Blue=ORF Green=Tags(s)

TTTTGTAATACGACTCACTATAGGGCGGCCGGAATTCGTCGACTGGATCCGGTACCGAGGAGATCTGCC
GCC**CGATCGCC**

ATGACCTGAACGGCGCGGCAGCGGAGCGGGCGGGAGCCGCGGTGGGGCCAGGAGCGCGAGCGCCGTC
GGGGCAGCACACCCTGGGGCCCCGCCCGCGCTGCACCGCCGAGCATGCCGGTGGACGAGCGCGACCT
GCAGGGCGCGTGAACCCGGGTGCCCTGACGGCGCCCGCGCCGGGACGGGGACCCAGGGTCCCAGGCTG
GACTGGCCCGAGGACTCCGAGGACTCGCTCAGCTCAGGGGGCAGCGACTCAGACGAGAGCGTTTACAAGG
TGCTGCTGCTGGGGCGCCCGCGTGGCAAGAGCGCCCTGGCGCGCATCTTCGGCGGTGTGGAGGACGG
GCCTGAAGCAGAGGCAGCAGGGCACACCTATGATCGCTCCATTGTAGTGGACGGAGAAGAGGCATCACTC
ATGGTCTACGACATTTGGGAGCAGGACGGGGGCCGCTGTTGCCCGCCACTGCATGGCCATGGGGATG
CCTATGTCATTGTGTAAGTACTCAGTGACGGACAAGGGCAGCTTCGAGAAGGCCTCAGAAGTGCAGGTCAGCT
GCGGCGTGACGGCAAACAGATGATGTGCCATCATCCTCGTGGGCAACAAGAGCGACCTGGTGCCTCT
CGTGAGGTCTCGGTGGATGAGGGCCGGCCTGCGCGGTGGTCTTTGACTGCAAGTTTATTGAGACATCAG
CGCATTGCACCACAATGTCCAGGCGTGTGTAAGGTGTCGTGCCAGATACGCTGCCAGGGACAG
CAAAGAAGCCAACGCACGACGCAAGCAGGACCCGGAGGCGAGAGACCTTGGCAAAAAGGCGAAGCGC
TTCTTGGCGGCATCGTAGCTCGTAACAGCCGCAAGATGGCCTTTCGCGCCAAATCCAAGTCTGCCACG
ACCTCTCGTTCTC

ACGCGTACGCGGCCGCTCGAG - GFP Tag - GTTTAA



[View online »](#)

Protein Sequence: >RG202927 representing NM_004165
Red=Cloning site Green=Tags(s)

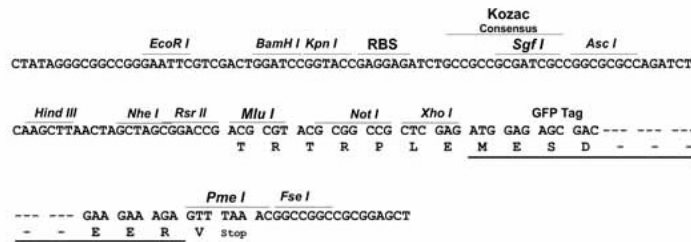
MTLNNGGSGAGGSRGGGQERERRRGSTPWGPAPPLHRRSMPVDERDLQAALTPGALTAAGTGTQGPRL
 DWPEDSEDSLSSGGSDSESVYKVLGAPGVGKSALARIFGGVEDGPEAEAAGHTYDRSIVVDGEEASL
 MYYDIWEQDGGRWLPGHCMAMGDAYVIVYSVTDKGSFEKASELRVQLRRARQTDVPIILVGNKSDLVRS
 REYSVDEGRACAVVFDCFKFIETSAALHHNVQALFEGVVRQIRLRRDSKEANARRQAGTRRRESLGKKAKR
 FLGRIVARNSRKMAFRAKSKSCHDL SVL

TRTRPLE - GFP Tag - V

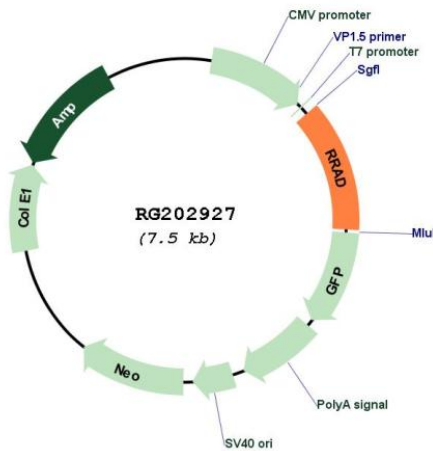
Restriction Sites: SgfI-MluI

Cloning Scheme:

Cloning sites used for ORF Shuttling:



Plasmid Map:



ACCN: NM_004165

ORF Size: 924 bp

OTI Disclaimer:	The molecular sequence of this clone aligns with the gene accession number as a point of reference only. However, individual transcript sequences of the same gene can differ through naturally occurring variations (e.g. polymorphisms), each with its own valid existence. This clone is substantially in agreement with the reference, but a complete review of all prevailing variants is recommended prior to use. More info
OTI Annotation:	This clone was engineered to express the complete ORF with an expression tag. Expression varies depending on the nature of the gene.
Components:	The ORF clone is ion-exchange column purified and shipped in a 2D barcoded Matrix tube containing 10ug of transfection-ready, dried plasmid DNA (reconstitute with 100 ul of water).
Reconstitution Method:	<ol style="list-style-type: none">1. Centrifuge at 5,000xg for 5min.2. Carefully open the tube and add 100ul of sterile water to dissolve the DNA.3. Close the tube and incubate for 10 minutes at room temperature.4. Briefly vortex the tube and then do a quick spin (less than 5000xg) to concentrate the liquid at the bottom.5. Store the suspended plasmid at -20°C. The DNA is stable for at least one year from date of shipping when stored at -20°C.
RefSeq:	NM_004165.3
RefSeq Size:	1443 bp
RefSeq ORF:	927 bp
Locus ID:	6236
UniProt ID:	P55042
Cytogenetics:	16q22.1
Domains:	ras, RAS, RAB
Gene Summary:	May play an important role in cardiac antiarrhythmia via the strong suppression of voltage-gated L-type Ca(2+) currents. Regulates voltage-dependent L-type calcium channel subunit alpha-1C trafficking to the cell membrane (By similarity). Inhibits cardiac hypertrophy through the calmodulin-dependent kinase II (CaMKII) pathway. Inhibits phosphorylation and activation of CAMK2D.[UniProtKB/Swiss-Prot Function]