

## Product datasheet for **RG202906**

### PHF1 (NM\_024165) Human Tagged ORF Clone

#### Product data:

Product Type:	Expression Plasmids
Product Name:	PHF1 (NM_024165) Human Tagged ORF Clone
Tag:	TurboGFP
Symbol:	PHF1
Synonyms:	hPHF1; MTF2L2; PCL1; PHF2; TDRD19C
Mammalian Cell Selection:	Neomycin
Vector:	pCMV6-AC-GFP (PS100010)
E. coli Selection:	Ampicillin (100 ug/mL)



[View online »](#)

**ORF Nucleotide Sequence:**

>RG202906 representing NM\_024165  
 Red=Cloning site Blue=ORF Green=Tags(s)

GACGTTGTATACGACTCCTATAGGGCGGCCGGAATTCGTCGACTGGATCCGGTACCGAGGAGATCTGCC  
 GCCGGCGCGCCC

ATGGCGCAGCCCCCGGCTGAGCCGCTCTGGTGCCTCCTCACTTGGGACCCAGCTTCTCTGCTCCCA  
 CCTCTGGCCCCAGGCCTCGGCTTTGGGAGGGTCAAGATGTCTGGCCAGATGGACTGATGGGCTGCATA  
 CTTGGGTACCATCAAAAAGGTGGACAGTCTAGGGAGGTGTGTCTGGTCCAGTTTGGAGTATTGCGAG  
 TTTCTGGTTCTATGAAAAGACATTAGCCCTGCTGCCCTCCCTGGAGAGGAACTCCTCTGTGTGTCTGTC  
 GCTCTGAGACTGTGGTCCCTGGGAACCGGCTGGTCACTGTGAGAAGTGTGCGCATGCTTATCACCAGGA  
 CTGCCATGTTCCAGGGCTCCAGCCCCTGGAGAGGGAGAGGGCACATCCTGGGTATGCCGCCAGTGTGTC  
 TTTGCGATCGCCACCAAGAGGGGAGGTGCCCTGAAGAAGGGCCCCATGCCCGGCCATGCTGGGTATGA  
 AGCTTTCTCTGCCATATGGACTGAAGGGCTGGACTGGGATGCTGGACATCTGAGCAACCCACAGCAGAG  
 TTAAGTACTGTGGTGGCCCTGGGAGTGAACCTGAAAATGCTGCAGTCCCGAGCTGCCTGCAGTGG  
 TTCCATGAGGCCTGCACCCAGTGTCTGAGCAAGCCCCCTCTATGGGGACAGGTTCTATGAATTTGAAT  
 GCTGTGTGTGTCGCGGGGGCCCTGAGAAAAGTCCGGAGACTACAGCTTCGCTGGGTGGATGTGGCCCATCT  
 TGTCTGTATCACCTCAGTGTGTTGCTGTAAGAAGAAATACTTTGATTTTGATCGTGAGATCCTCCCTTC  
 ACTTCTGAGAATTGGGACAGTTTCTCTGGGGAGCTTTCAGACACCCCAAGGAGAAGCTTCTTCCA  
 AGCTCCTCTCTGCTCTTAACAGCCACAAGGACCGTTTCATTTTCAGGGAGAGAGATTAAGAAGAGGAAATG  
 TTTGTTGGTCTCCATGCTCGGATGCCTCCCCCTGTGGAGCCCCCTACTGGAGATGGAGCACTCACCAGC  
 TTCCCTTCAGGGCAGGGCCCTGGGGAGGGTCTCACGTCCCCTGGGAAGCGCCGGAGGCCGAGCCAG  
 AGCCCCGAGGAGGAGGAGGAGGAGGAAAGTGGAGGAGCTGGGGCCACCCTCAGCAGTGGCAATCAGCC  
 CGAGCCCCAGGACAGAGGGAGCGGGCTCATCTGCAGAGGGCACTGCAGGCCTCAGTGTCTCCACCATCC  
 CCCAGCCCTAACAGAGTTACCAGGGCAGCAGCGGCTACAACCTCCGGCCACAGATGCCCGCTGCCTGC  
 CCAGCAGCCCCATCCGGATGTTTCTCTCCACCCTTCTGCCAGCACCGCAGGGACCTCTGGGGACAG  
 TGGACCCCCAGACAGGTCACCCCTGGAACCTCACATTGGTTTCCCACAGACATCCCTAAAAGTGGCCCC  
 CACTCGATGACTGCCTCATCTTCTCAGTTTCATCCCCATCCCCAGGTCTTCTAGACGCTCAGCACCCC  
 CTTCTCCCCTGTCCGTAGTTTGTCTCTGGGACTGGGGAGGAGTCCGAGGTGGGGTGGTTACCTGTC  
 CCGAGGGGACCCTGTCCGGTCTTGTCTGGAGAGTACGGCCTGATGGCTCTGTGCAGTACCTGGTTGAG  
 TGGGGAGGAGGGGCATCTTC

ACGCGTACGCGGCCGCTCGAG - GFP Tag - GTTTAA

**Protein Sequence:**

>RG202906 representing NM\_024165  
 Red=Cloning site Green=Tags(s)

MAQPRLSRGASSLWDPASPAPTSGRPRRLWEGQDVLARWTDGLLYLGTIKKVDAREVCLVQFEDDSQ  
 FLVLWKDIPSPALPGEELLCCVCRSETVVPGNRLVSCEKCRHAYHQDCHVPRAPAPGEGEGTSWVCRQC  
 FAIATKRGGALKKGPYARMLGMKLSLPGYGLKGLDWDAGHLNRRQSYCYCGGPGGEWNLKMLQCRSLQW  
 FHEACTQCLSKPLL YGDRFYEFECVCRGGPEKVRRLQLRWVDVAHLVLYHLVSVCKKKYDFDREILPF  
 TSENWDSLLL GELSDTPKGERSSKLLSALNSHKDRFISGREIKKRKCLFGLHARMPPPVEPPTGDGALTS  
 FPSGQGGVSRPLGKRRRPEPEPLRRRQKGVKVEELGPPSAVRNQPEPQEQRERAHLQALQASVSPPS  
 PSPNQSYQGSSGYNFRPTDARCLPSSPIRMFASFHPSASTAGTSGDSGPPDRSPLLEHIGFPTDIPKSAP  
 HSMTASSSSVSSPGLPRRSAPPSPLCRSLSPGTGGGVRGGVGYLSRGDPVVRVLAARRVPRDGSVQYLVE  
 WGGGGIF

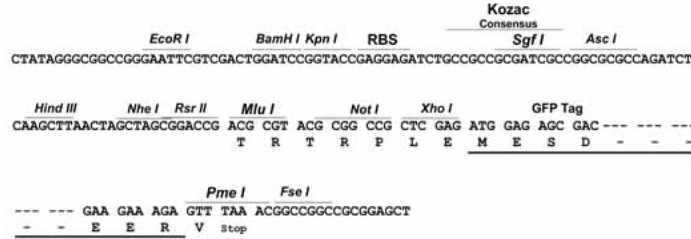
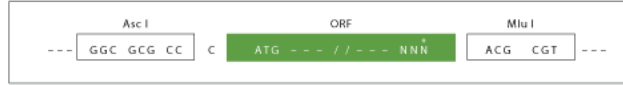
TRTRPLE - GFP Tag - V

**Restriction Sites:**

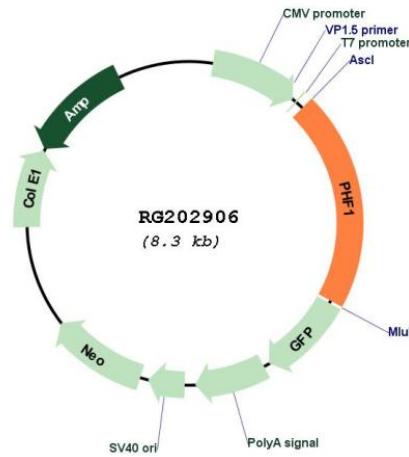
AscI-MluI

Cloning Scheme:

Cloning sites used for ORF Shuttling:



Plasmid Map:



ACCN: NM\_024165  
 ORF Size: 1701 bp

<b>OTI Disclaimer:</b>	The molecular sequence of this clone aligns with the gene accession number as a point of reference only. However, individual transcript sequences of the same gene can differ through naturally occurring variations (e.g. polymorphisms), each with its own valid existence. This clone is substantially in agreement with the reference, but a complete review of all prevailing variants is recommended prior to use. <a href="#">More info</a>
<b>OTI Annotation:</b>	This clone was engineered to express the complete ORF with an expression tag. Expression varies depending on the nature of the gene.
<b>Components:</b>	The ORF clone is ion-exchange column purified and shipped in a 2D barcoded Matrix tube containing 10ug of transfection-ready, dried plasmid DNA (reconstitute with 100 ul of water).
<b>Reconstitution Method:</b>	<ol style="list-style-type: none"><li>1. Centrifuge at 5,000xg for 5min.</li><li>2. Carefully open the tube and add 100ul of sterile water to dissolve the DNA.</li><li>3. Close the tube and incubate for 10 minutes at room temperature.</li><li>4. Briefly vortex the tube and then do a quick spin (less than 5000xg) to concentrate the liquid at the bottom.</li><li>5. Store the suspended plasmid at -20°C. The DNA is stable for at least one year from date of shipping when stored at -20°C.</li></ol>
<b>RefSeq:</b>	<a href="#">NM_024165.2</a>
<b>RefSeq Size:</b>	2260 bp
<b>RefSeq ORF:</b>	1704 bp
<b>Locus ID:</b>	5252
<b>UniProt ID:</b>	<a href="#">O43189</a>
<b>Cytogenetics:</b>	6p21.32
<b>Domains:</b>	PHD, TUDOR
<b>Protein Families:</b>	Druggable Genome, Transcription Factors
<b>Gene Summary:</b>	This gene encodes a Polycomb group protein. The protein is a component of a histone H3 lysine-27 (H3K27)-specific methyltransferase complex, and functions in transcriptional repression of homeotic genes. The protein is also recruited to double-strand breaks, and reduced protein levels results in X-ray sensitivity and increased homologous recombination. Multiple transcript variants encoding different isoforms have been found for this gene. [provided by RefSeq, May 2009]