

Product datasheet for **RG202902**

PITX3 (NM_005029) Human Tagged ORF Clone

Product data:

Product Type:	Expression Plasmids
Product Name:	PITX3 (NM_005029) Human Tagged ORF Clone
Tag:	TurboGFP
Symbol:	PITX3
Synonyms:	ASGD1; ASMD; ASOD; CTPP4; CTRCT11; PTX3
Mammalian Cell Selection:	Neomycin
Vector:	pCMV6-AC-GFP (PS100010)
E. coli Selection:	Ampicillin (100 ug/mL)
ORF Nucleotide Sequence:	>RG202902 representing NM_005029 Red=Cloning site Blue=ORF Green=Tags(s)

TTTTGTAATACGACTCACTATAGGGCGGCCGGAATTCGTCGACTGGATCCGGTACCGAGGAGATCTGCC
GCC**CGATCGCC**

ATGGAGTTCGGCCTGCTCAGCGAGGCAGAGGCCCGGAGCCCTGCCCTGTCGCTGTCAGACGCTGGCACTC
CGCACCCCGAGCTCCCAGAGCACGGCTGCAAGGGCCAGGAGCACAGCGACTCAGAAAAGGCCTCGGCTTC
GCTGCCCGGGGCTCCCCAGAGGACGGTTCGCTGAAAAAGAAGCAGCGGGCAGCGCACGCACTTACC
AGCCAGCAGCTACAGGAGCTAGAGGCGACCTTCCAGAGGAACCGTACCCCGACATGAGCACGCGCGAGG
AGATCGCCGTGTGGACCAACCTACCGAGGCCCGGTGCGGGTGTGGTTCAAGAACCAGCGCGCCAAATG
GCGGAAGCGCGAGCGCAGCCAGCAGGCCGAGCTATGCAAAGGCAGCTTCGCGGCGCCGCTCGGGGGGCTG
GTGCCGCCCTACGAGGAGGTGTACCCCGGCTACTCGTACGGCAACTGGCCGCCAAAGGCTTTGCCCGGC
CGCTCGCCGCCAAGACCTTTCCATTCGCCCTTCAACTCGGTCAACGTGGGGCCTCTGGCTTCGACGCCGT
CTTCTCGCCACCCAGCTCCATCGCCGCTCCATGGTGCCTCCGCGCGGCTGCCCGGGCACCGTGCCA
GGGCTGGGGCCCTGCAGGGCTGGCGGGGGCCCCCGGGTGGCTCCGGCCCGCTGTCTCCGGGG
CCGTGTCTGCCCTTATGCCTCGGCCGCGCCGCGCGGCTGCCGCTTCCCCCTACGTCTATCG
GGACCCGTGTAACCTGAGCCTGGCCAGCCTGCGGCTCAAAGCCAAACAGCACGCTCCTTCAGCTACCC
GCTGTGCACGGGCGCCCCGGCAGCCAACCTTAGTCCGTGCCAGTACGCCGTGGAAAGGCCCGTA

ACGCGTACGCGGCCGCTCGAG - GFP Tag - GTTTAA



[View online »](#)

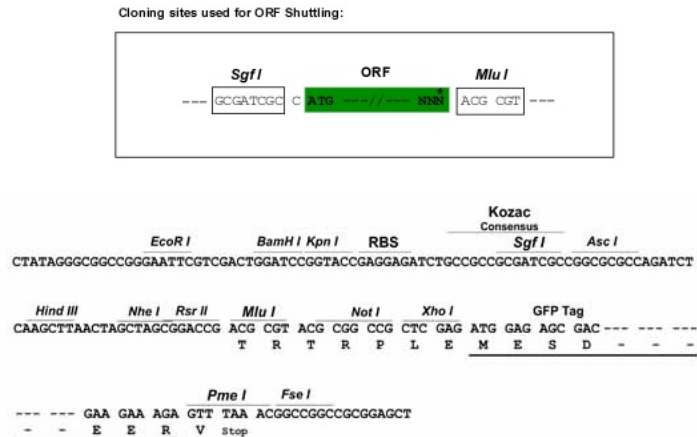
Protein Sequence: >RG202902 representing NM_005029
 Red=Cloning site Green=Tags(s)

MEFGLLSEAEARSPALSLSDAGTPHPQLPEHGCKGQEHSDSEKASASLPGGSPEDGSLKKKQRRQRTHFT
 SQQLQELEATFQRNRYPDMSTREEIAVWTNLTEARVVRVWFKNRRAKWRKRERSQQAELCKGSFAAPLGGL
 VPPYEEVYPGYSYGNWPPKALAPPLAAKTFPFAFNNSVNVGPLASQPVFSPPSSIAASMPVSAAPGTVP
 GPALQGLGGPPGLAPAAVSSGAVSFCYASAAAAAAAASSPYVYRDPNCSSLASLRLKAKQHASF SYP
 AVHGPPPAANLSPCQYAVERPV

TRTRPLE - GFP Tag - V

Restriction Sites: SgfI-MluI

Cloning Scheme:



ACCN: NM_005029

ORF Size: 906 bp

OTI Disclaimer: The molecular sequence of this clone aligns with the gene accession number as a point of reference only. However, individual transcript sequences of the same gene can differ through naturally occurring variations (e.g. polymorphisms), each with its own valid existence. This clone is substantially in agreement with the reference, but a complete review of all prevailing variants is recommended prior to use. [More info](#)

OTI Annotation: This clone was engineered to express the complete ORF with an expression tag. Expression varies depending on the nature of the gene.

Components: The ORF clone is ion-exchange column purified and shipped in a 2D barcoded Matrix tube containing 10ug of transfection-ready, dried plasmid DNA (reconstitute with 100 ul of water).

Reconstitution Method:

1. Centrifuge at 5,000xg for 5min.
2. Carefully open the tube and add 100ul of sterile water to dissolve the DNA.
3. Close the tube and incubate for 10 minutes at room temperature.
4. Briefly vortex the tube and then do a quick spin (less than 5000xg) to concentrate the liquid at the bottom.
5. Store the suspended plasmid at -20°C. The DNA is stable for at least one year from date of shipping when stored at -20°C.

RefSeq: [NM_005029.4](#)

RefSeq Size: 1407 bp

RefSeq ORF: 909 bp

Locus ID: 5309

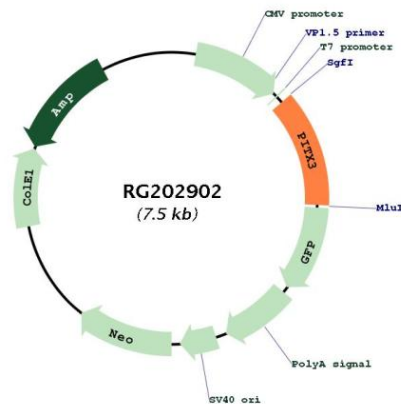
UniProt ID: [O75364](#)

Cytogenetics: 10q24.32

Protein Families: Druggable Genome, Transcription Factors

Gene Summary: This gene encodes a member of the RIEG/PITX homeobox family, which is in the bicoid class of homeodomain proteins. Members of this family act as transcription factors. This protein is involved in lens formation during eye development. Mutations of this gene have been associated with anterior segment mesenchymal dysgenesis and congenital cataracts. [provided by RefSeq, Jul 2008]

Product images:



Circular map for RG202902