

Product datasheet for **RG202899**

EXTL3 (NM_001440) Human Tagged ORF Clone

Product data:

Product Type:	Expression Plasmids
Product Name:	EXTL3 (NM_001440) Human Tagged ORF Clone
Tag:	TurboGFP
Symbol:	EXTL3
Synonyms:	BOTV; EXTL1L; EXTR1; ISDNA; REGR; RPR
Mammalian Cell Selection:	Neomycin
Vector:	pCMV6-AC-GFP (PS100010)
E. coli Selection:	Ampicillin (100 ug/mL)



[View online »](#)

ORF Nucleotide Sequence:

>RG202899 representing NM_001440
 Red=Cloning site Blue=ORF Green=Tags(s)

TTTTGTAATACGACTCACTATAGGGCGGCCGGGAATTCGTCGACTGGATCCGGTACCGAGGAGATCTGCC
 GCC**CGGATCGCC**

ATGACAGGCTATACCATGCTGCGGAATGGGGCGCGGGGAACGGAGGTCAGACCTGCATGCTGCGCTGGT
 CCAACCGCATCCGCCTCACGTGGCTCAGCTTCAGGCTCTTTGTCATCCTGGTCTTCTTCCCGCTCATCGC
 CCACTATTACCTCACCCTCTGGATGAGGCTGATGAGGCAGGCAAGCGGATTTTTGGTCCCCGGGTGGG
 AACGAGCTGTGCGAGGTGAAGCACGTGCTGGATCTGTGCCGCATCCGGGAGTCGGTGAGTGAAGAGCTCC
 TGCAGCTGGAGGCCAAGCGCCAAGAGCTGAACAGCGAGATCGCCAAGCTGAATCTGAAGATCGAAGCCTG
 TAAGAAGAGCATTGAGAAGCGCAAGCAGGACCTGCTCCAGCTCAAGAATGTCATCAGCCAGACCGAGCAT
 TCCTACAAGGAGCTCATGGCCAGAACCAGCCAAAGCTGTCCCTGCCATCCGACTGCTCCAGAGAAGG
 ACGATGCCGGCTCCCTCCCCGAAGGCCACTCGGGGCTGCCGGTACACAAGCTTTGATTATCTCG
 TTGCCCTCTCACCTCTGGCTTCCCGGTCTACGTCTATGACAGTGACCAGTTTGTCTTTGGCAGCTACCTG
 GATCCCTTGGTCAAGCAGGCTTTTCAGGCGACAGCACGAGCTAACGTTTATGTTACAGAAAATGCAGACA
 TCGCCTGCCTTACGTGATACTAGTGGGAGAGATGCAGGAGCCGGTGGTCTGCGGCCTGCTGAGCTGGA
 GAAGCAGTTGATTCCCTGCCACACTGGCGGACGGATGGACACAACCATGTCATCATCAATCTGTACAGT
 AAGTCAGATACACAGAACCTTCTCTATAACGTCAGTACTGGCCGTGCCATGGTGGCCAGTCCACCTTCT
 ACACTGTCAGTACAGACCTGGCTTTGACTTGGTCGATACCCGCTGGTCCATGCCATGTCTGAGCCAA
 CTTTCATGAAAATCCCACACAGGTGCCGGTGAAGCGGAAATATCTTTCACCTTCCAGGGCGAGAAGATT
 GAGTCTCTGAGGTCTAGCCTTACGAGGCGCCGCTCCTTGAAGAGGAAATGGAGGGCGACCCTCCGCGC
 ACTACGATGACCGGATCATTGCCACCCTGAAGGCGGTGCAGGACAGCAAGCTGGATCAGTCTGCTGGA
 ATTCACCTGCAAAAACCGCCAAACCCAGCCTGCCAACTGAGTGGGCACTGTGTGGAGAGCGGGAGGAC
 CGTTGGAATTGCTGAAGCTCTCCACCTTCGCCCTCATCATTACCCCGGGGACCCTCGTTGGTTATTT
 CCTCTGGGTGTGCAACACGGCTCTTGAAGCCCTGGAAGTCGGTGCCGTCGCCGTGGTGGTGGTGGGAGCA
 GGTCCAGCTTCCCTACCAGGACATGCTGCAGTGAACGAGGCGGCCCTGGTGGTGCACAAAGCCTCGTGT
 ACCGAGGTTCAATTCCTGCTCAGAAGCCTCTCCGATAGTGACCTCCTGGCTATGAGGCGGCAAGGCCGCT
 TTCTCTGGGAGACTTACTTCTCCACTGCTGACAGTATTTTAATACCGTGTGGCTATGATTAGGACTCG
 CATCCAGATCCCAGCCGCTCCCATCCGGGAAGAGGCGGCAGCTGAGATCCCCACCGTTCAGGCAAGGCC
 GCTGGAAGTACCCCAACATGGCTGACAACGGGGACCTGGACCTGGGGCCAGTGGAGACGGAGCCGCCCT
 ACGCCTCACCCAGATACCTCCGCAATTTCACTCTGACTGTCACTGACTTTTACCGCAGCTGGAAGTGTGC
 TCCAGGGCCTTTCATCTTTTCCCCCACTCCCTTTGACCCTGTGTTGCCCTCAGAGGCCAAATTTCTTG
 GGCTCAGGGACTGGCTTTCGGCCTATTGGTGGTGGAGCTGGGGGTTCTGGCAAGGAATTTAGGCAGCGC
 TTGGAGGCAATGTTCCCCGAGAGCAGTTCACGGTGGTGTGTTGACTTATGAGCGGGAGGAAGTGCTTAT
 GAATCTTTAGAGAGGCTGAATGGCCTCCCTTACCTGAACAAGGTCGTGGTGGTGTGGAATTTCTCCAAG
 CTGCCATCAGAGGACCTTCTGTGGCCTGACATTGGCGTCCCCATCATGGTGGTCCGACTGAGAAGAACA
 GTTTGAACAACCGATTCTTACCCTGGAATGAAATTGAGACAGAGGCCATCCTGTCCATTGATGACGATGC
 TCACCTCCGCCATGACGAAATCATGTTTGGGTTCCGGGTGGAGAGAAGCTCGGGACCGCATCGTGGG
 TTCCCTGGCCGTTACCACGCATGGGACATCCCCCATCAGTCTGGCTCTACAACCTCAACTACTCCTGTG
 AGCTGTCCATGGTGTGACAGGTGCTGCCTTCTTTCACAAGTATTATGCCTACCTGTATTCTTATGTGAT
 GCCCCAGGCCATCCGGGACATGGTGGATGAATACATCAACTGTGAGGACATTGCCATGAACTTCTTGTGTC
 TCCCACATCACTCGAAGCCCCCATCAAGGTGACCTCACGGTGGACATTCCGATGCCAGGATGCCCTC
 AGGCCCTGTCTCATGATGACTCCCACTTCCACGAGCGGCACAAGTGCATCAACTTCTTGTGAAGGTGTA
 CGGCTACATGCCCTCCTGTACACGCAGTTCAGGGTGGATTCTGTGCTCTCAAGACACGCTGCCCAT
 GACAAGACCAAGTCTTCAAGTTCATC

ACGCGTACGCGGCCGCTCGAG – GFP Tag – GTTTAA

Protein Sequence: >RG202899 representing NM_001440
 Red=Cloning site Green=Tags(s)

MTGYTMLRNGGAGNGGQTCMLRWSNRIRLTWLSFTL FVILVFFPLIAHYLTTLDEADEAGKRIFGPRVG
 NELCEVKHVL D LCR IRESVSEELLQLEAKRQELNSEIAKLNKIEACKKSIENAKQDLLQLKNVISQTEH
 SYKELMAQNQPKLSLPIRLLPEKDDAGLPPP KATRGCRLHNCFDY SRCPLTSGFPVYVYDSQDFVFGSYL
 DPLVKQAFQATARANVYVTENADIACL YVILV GEMQEPVVL RPAELEKQLYSLPHWR TDGHNHVIINLSR
 KSDTQNL LYNVSTGRAMVAQSTFYTVQYRPGFDLVVSPLVHAMSEPNFMEIPPQVPVKRKYLF TFQGEKI
 ESLRSSLQEAR SFEEEMEGDPPADYDDRI IATLKAVQDSKLDQVLVEFTCKNQPKPSLPT EWALCGERED
 RLELLKLSTFAL IITPGDPR LVISSGCATRLFEALEVGAVPVVLGEQVQLPYQDMLQWNEAALVVPKPRV
 TEVHFLRLSLSDSL LAMRRQGRFLWETYFSTADSI FNTVLAMIRTRIQIPAAP IREEAAA EI PHRSGKA
 AGTDPNMADNGDL DGPVETEP PYASPRYL RNFTLTVTDFYRSWNCAPGPFHLPHP TPFDPVLPSEAKFL
 GSGTGFRPIGGGAGGSGKEFQAALGGNVPREQFTVVMLTYEREEVLMNSLERLNGLPYL NKVVVVWNSPK
 LPSEDL L WPDIGVPI MVVRTEKNSLNNRFLPWNEIETEAILSIDDDAHLRHDEIMFGFRVWREARDRIVG
 FPGRYHAWDIPHQSWL YNSNYSCELSMVL TGAFFHKYAYLYSYVMPQAIRDMVDEYINCEDIAMNFLV
 SHITRKPPIKVT SRWTFRCPGCPQALSHDDSHFHERHKCINFFVKVYGYMPLLYTQFRVDSVLFKTRLPH
 DKTKCFKFI

TRTRPLE – GFP Tag – V

Restriction Sites: SgfI-MluI

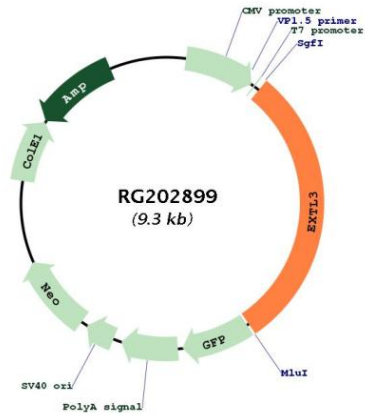
Cloning Scheme:



ACCN: NM_001440

ORF Size:	2757 bp
OTI Disclaimer:	The molecular sequence of this clone aligns with the gene accession number as a point of reference only. However, individual transcript sequences of the same gene can differ through naturally occurring variations (e.g. polymorphisms), each with its own valid existence. This clone is substantially in agreement with the reference, but a complete review of all prevailing variants is recommended prior to use. More info
OTI Annotation:	This clone was engineered to express the complete ORF with an expression tag. Expression varies depending on the nature of the gene.
Components:	The ORF clone is ion-exchange column purified and shipped in a 2D barcoded Matrix tube containing 10ug of transfection-ready, dried plasmid DNA (reconstitute with 100 ul of water).
Reconstitution Method:	<ol style="list-style-type: none">1. Centrifuge at 5,000xg for 5min.2. Carefully open the tube and add 100ul of sterile water to dissolve the DNA.3. Close the tube and incubate for 10 minutes at room temperature.4. Briefly vortex the tube and then do a quick spin (less than 5000xg) to concentrate the liquid at the bottom.5. Store the suspended plasmid at -20°C. The DNA is stable for at least one year from date of shipping when stored at -20°C.
RefSeq:	NM_001440.2 , NP_001431.1
RefSeq Size:	6172 bp
RefSeq ORF:	2760 bp
Locus ID:	2137
UniProt ID:	O43909
Cytogenetics:	8p21.1
Domains:	Exostosin
Protein Families:	Transmembrane
Protein Pathways:	Heparan sulfate biosynthesis, Metabolic pathways
Gene Summary:	This gene encodes a single-pass membrane protein which functions as a glycosyltransferase. The encoded protein catalyzes the transfer of N-acetylglucosamine to glycosaminoglycan chains. This reaction is important in heparin and heparan sulfate synthesis. Alternative splicing results in the multiple transcript variants. [provided by RefSeq, Nov 2012]

Product images:



Circular map for RG202899