

Product datasheet for **RG202885**

LKB1 (STK11) (NM_000455) Human Tagged ORF Clone

Product data:

Product Type: Expression Plasmids
Product Name: LKB1 (STK11) (NM_000455) Human Tagged ORF Clone
Tag: TurboGFP
Symbol: LKB1
Synonyms: hLKB1; LKB1; PJS
Mammalian Cell Selection: Neomycin
Vector: pCMV6-AC-GFP (PS100010)
E. coli Selection: Ampicillin (100 ug/mL)
ORF Nucleotide Sequence: >RG202885 representing NM_000455
 Red=Cloning site Blue=ORF Green=Tags(s)

TTTTGTAATACGACTCACTATAGGGCGCCGGGAATTCGTCGACTGGATCCGGTACCGAGGAGATCTGCC
 GCC**CGATCGCC**

ATGGAGGTGGTGGACCCGCAGCAGCTGGGCATGTTACGGAGGGCGAGCTGATGTCGGTGGGTATGGACA
 CGTTCATCCACCGCATCGACTCCACCGAGGTCTCTACCAGCCGCGCCGAAGCGGGCAAGCTCATCGG
 CAAGTACCTGATGGGGACCTGCTGGGGGAAGGCTCTTACGGCAAGGTGAAGGAGGTGCTGGACTCGGAG
 ACGCTGTGCAGGAGGGCCGTCAGATCCTCAAGAAGAAGAAGTTGCGAAGGATCCCCAACGGGGAGGCCA
 ACGTGAAGAAGGAAATCACTACTGAGGAGGTTACGGCACAAAATGTCATCCAGCTGGTGGATGTGTT
 ATACAACGAAGAGAAGCAGAAAATGTATATGGTATGGAGTACTGCGTGTGTGGCATGCAGGAAATGCTG
 GACAGCGTGCCGGAGAAGCGTTTCCAGTGTGCCAGGCCACGGGTACTTCTGTGACGCTGATTGACGGCC
 TGGAGTACCTGCATAGCCAGGGCATTGTGCACAAGGACATCAAGCCGGGGAACCTGCTGCTCACCACCGG
 TGGCACCTCAAATCTCCGACCTGGGCGTGGCCGAGGCACTGCACCCGTTCCGGCGGACGACACCTGC
 CGGACCAGCCAGGGCTCCCCGGCTTCCAGCCGCCGAGATTGCCAACGGCCTGGACACCTTCTCCGGCT
 TCAAGGTGGACATCTGGTCGGCTGGGGTCAACCTCTACAACATCACCACGGGTCTGTACCCCTTCAAGG
 GGACAACATCTACAAGTTGTTTGAAGAACATCGGAAGGGGAGCTACGCCATCCCGGGCGACTGTGGCCCC
 CCGCTCTCTGACCTGCTGAAAGGGATGCTTGAGTACGAACCGGCCAAGAGGTTCTCCATCCGGCAGATCC
 GGACGACAGCTGGTTCCGGAAGAACAATCCTCCGGCTGAAGCACCAAGTCCCATCCACCGAGCCAGA
 CACCAAGGACCGGTGGCGCAGCATGACTGTGGTCCGCTACTTGGAGGACCTGCACGGCGCGGACGAGGAC
 GAGGACCTCTTCGACATCGAGGATGACATCATCTACACTCAGGACTTCACGGTGCCCGGACAGGTCCAG
 AAGAGGAGGCCAGTCACAATGGACAGCGCCGGGCTCCCAAGGCCGTGTGTATGAACGGCACAGAGGC
 GGCGCAGCTGAGCACAAATCCAGGGCGGAGGGCCGGCCCCCAACCCTGCCCGCAAGGCCTGCTCCGCC
 AGCAGCAAGATCCGCCGGCTGTCCGGCTGCAAGCAGCAG

ACGCGTACGGCGCCGCTCGAG - GFP Tag - GTTTAA



[View online >](#)

Protein Sequence: >RG202885 representing NM_000455
 Red=Cloning site Green=Tags(s)

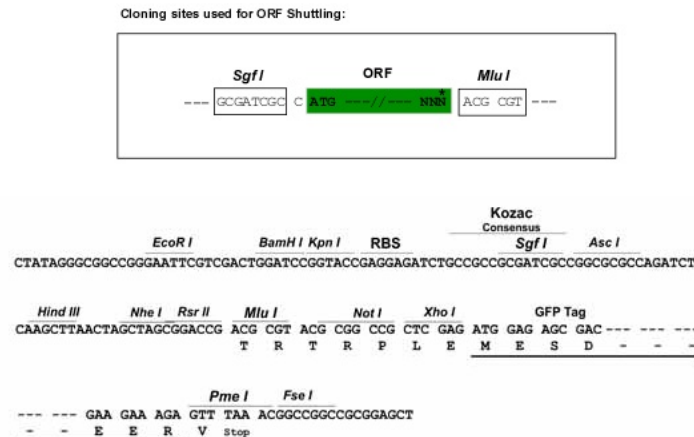
```
MEVVDPQQLGMFTEGELMSVGMDFIHRIDSTEVYQPRRKRAKLIGKYLMDLLGEGSYGKVKEVLDSE
TLCRRAVKILKKKLLRRIPNGEANVKKEIQLLRRLRHKNVIQLVDVLYNEEKQKMYMMEYCVCGMQEML
DSVPEKRFPVCQAHGYFCQLIDGLELYLHSQGIHVHKDIKPGNLLLTTGGTLKISDLGVAEALHPFAADTDC
RTSQGSPAFQPPEIANGLDTFSGFKVDIWSAGVTLYNITTTGLYPFEGDNIYKLFENIGKGSYAIPGDCGP
PLSDLLKGMLEYEPAKRFSIRQIRQHSWFRKKHPPAEAPVPIPPSPDTKDRWRSMTVVPYLEDLHGAGED
EDLFDIEDDIIYTDFTVPGQVPEEEASHNGQRRGLPKAVCMNGTEAAQLSTKSRAEGRAPNPARKACSA
SSKIRRLSACKQQ
```

TRTRPLE – GFP Tag – V

Restriction Sites:

SgfI-MluI

Cloning Scheme:



ACCN: NM_000455

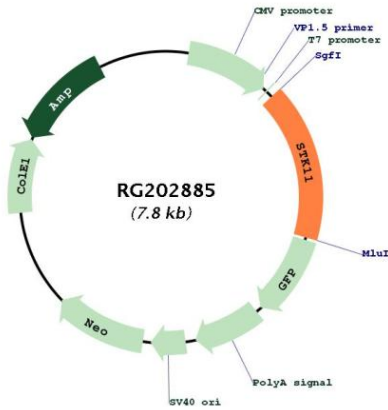
ORF Size: 1299 bp

OTI Disclaimer: Due to the inherent nature of this plasmid, standard methods to replicate additional amounts of DNA in E. coli are highly likely to result in mutations and/or rearrangements. Therefore, OriGene does not guarantee the capability to replicate this plasmid DNA. Additional amounts of DNA can be purchased from OriGene with batch-specific, full-sequence verification at a reduced cost. Please contact our customer care team at custsupport@origene.com or by calling 301.340.3188 option 3 for pricing and delivery.

The molecular sequence of this clone aligns with the gene accession number as a point of reference only. However, individual transcript sequences of the same gene can differ through naturally occurring variations (e.g. polymorphisms), each with its own valid existence. This clone is substantially in agreement with the reference, but a complete review of all prevailing variants is recommended prior to use. [More info](#)

OTI Annotation:	This clone was engineered to express the complete ORF with an expression tag. Expression varies depending on the nature of the gene.
Components:	The ORF clone is ion-exchange column purified and shipped in a 2D barcoded Matrix tube containing 10ug of transfection-ready, dried plasmid DNA (reconstitute with 100 ul of water).
Reconstitution Method:	<ol style="list-style-type: none">1. Centrifuge at 5,000xg for 5min.2. Carefully open the tube and add 100ul of sterile water to dissolve the DNA.3. Close the tube and incubate for 10 minutes at room temperature.4. Briefly vortex the tube and then do a quick spin (less than 5000xg) to concentrate the liquid at the bottom.5. Store the suspended plasmid at -20°C. The DNA is stable for at least one year from date of shipping when stored at -20°C.
RefSeq:	<u>NM_000455.5</u>
RefSeq Size:	3286 bp
RefSeq ORF:	1302 bp
Locus ID:	6794
UniProt ID:	<u>Q15831</u>
Cytogenetics:	19p13.3
Domains:	pkinase, TyrKc, S_TKc
Protein Families:	Druggable Genome, Protein Kinase
Protein Pathways:	Adipocytokine signaling pathway, mTOR signaling pathway
Gene Summary:	This gene, which encodes a member of the serine/threonine kinase family, regulates cell polarity and functions as a tumor suppressor. Mutations in this gene have been associated with Peutz-Jeghers syndrome, an autosomal dominant disorder characterized by the growth of polyps in the gastrointestinal tract, pigmented macules on the skin and mouth, and other neoplasms. Alternate transcriptional splice variants of this gene have been observed but have not been thoroughly characterized. [provided by RefSeq, Jul 2008]

Product images:



Circular map for RG202885