

Product datasheet for **RG202883**

Ube1L (UBA7) (NM_003335) Human Tagged ORF Clone

Product data:

Product Type:	Expression Plasmids
Product Name:	Ube1L (UBA7) (NM_003335) Human Tagged ORF Clone
Tag:	TurboGFP
Symbol:	Ube1L
Synonyms:	D8; UBA1B; UBE1L; UBE2
Mammalian Cell Selection:	Neomycin
Vector:	pCMV6-AC-GFP (PS100010)
E. coli Selection:	Ampicillin (100 ug/mL)
ORF Nucleotide Sequence:	>RG202883 representing NM_003335 Red=Cloning site Blue=ORF Green=Tags(s)

TTTTGTAATACGACTCACTATAGGGCGCCGGGAATTCGTCGACTGGATCCGGTACCGAGGAGATCTGCC
GCC**CGATCGCC**

ATGGATGCCCTGGACGCTTCGAAGCTACTGGATGAGGAGCTGTATTCAAGACAGCTGTATGTGCTGGGCT
CACCTGCCATGCAGAGGATTAGGGAGCCAGGGTCTGGTGTGAGGCTGCAGGGCTGGGGCCGAGGT
GGCCAAGAAGTTGGTTCTGATGGGTGTGGCAGCCTCACTCTGCATGATCCCCACCCACCTGCTGGTCC
GACCTGGCTGCCAGTTTCTCCTCTCAGAGCAGGACTTGAAAGGAGCAGAGCCGAGGCCTCAAGAGC
TCTTGGCTCAGCTCAACAGAGCTGTCCAGGTCGTGTCACACGGGTGACATCACTGAGGACCTGCTGTT
GGACTTCCAGGTGGTGGTCTGACTGCTGCAAAGCTGGAGGAGCAGCTGAAGGTGGGCACCTTGTGTCAT
AAGCATGGAGTTTCTTTCTGGCGGCTGACACCCGGGCCTCGTGGGGCAGTTGTTCTGTGACTTTGGTG
AGGACTTCACTGTGACAGGACCCACAGAGGCAGAACCCCTGACAGCTGCCATCCAGCACATCTCCAGGG
CTCCCCTGGCATTCTCACTCTGAGGAAAGGGCCAATACCCACTACTTCCGTGATGGAGACTTGGTGACT
TTCTCGGGAATTGAGGGAATGTTGAGCTCAACGACTGTGATCCCCGGTCTATCCACGTGCGGGAGGATG
GGTCCCTGGAGATTGGAGACACAACAATTTCTCTCGGTAAGTGGTGGGGCTATCACTGAAGTCAA
GAGACCAAGACTGTGAGACATAAGTCCCTGGACACAGCCCTGCTCCAGCCCCATGTGGTGGCCAGAGC
TCCCAGGAAGTTCACCATGCCACTGCCCTGCATCAGGCTTCTGTGCACTGCACAAGTCCAGCACCTCC
ATGGCCGCCCACCCAGCCCTGGGATCCTGTTGATGCAGAGACTGTGGTGGCCCTGGCCCGGACCTGGA
ACCACTGAAGCGGACAGAGGAAGAGCCACTGGAAGAGCCACTGGATGAGGCCCTAGTGCGGACAGTCCGC
CTAAGCAGTGCAGGTGCTTGGAGCCCTATGGTGGCCATGCTGGGTGACGTAGCTGCCAGGAAGTGTGA
AGGCAATCTCCAGGAAGTTCATGCCTCTGGACAGTGGCTTTACTTTGATGCCCTCGATTGCTTCCGGA
AGATGGGAGCTCCTCCAGTCTGAGGACTGTGCCCTGAGAGGCAGCCGCTATGATGGCAAATTGCA
GTGTTTGGGGCTGGTTTTAGGAGAACTGAGACGCCAGCACTACCTCCTGGTGGGCGCTGGTGCATTG
GTTGTGAGCTGCTCAAAGTCTTGGCCCTAGTGGGACTGGGGCCGGGAACAGCGGGGCTTACTGTTGT
TGACATGGACCACATAGAGCGCTCCAATCTCAGCCGTGAGTTCCTTTCAGTCCAGGACGTTGTTAGA



[View online >](#)

```

CCCAAGGCAGAGGTGGCTGCAGCAGCTGCCCGGGCCTGAACCCAGACTTACAGGTGATCCCGCTCACCT
ACCCACTGGATCCCACCACAGAGCACATCTATGGGGATAACTTTTTCTCCCGTGTGGATGGTGTGGCTGC
TGCCCTGGACAGTTTCCAGGCCCGGCGCTATGTGGCTGCTCGTTGCACCCACTATCTGAAGCCACTGCTG
GAGGCAGGCACATCGGGCACCTGGGGCAGTGTACAGTATTATGCCACATGTGACTGAGGCCTACAGAG
CCCCTGCCTCAGCTGCAGCTTCTGAGGATGCCCCCTACCCTGTCTGTACCGTGCGGTACTTCCCTAGCAC
AGCCGAGCACACCCTGCAGTGGGCCCGGCATGAGTTTGAAGAACTCTCCGACTGTCTGCAGAGACCATC
AACCACCACCAACAGGCACACACTTCCCTGGCAGACATGGATGAGCCACAGACACTCACCTTACTGAAGC
CAGTGCTTGGGGTCTGAGAGTGCCTCCACAGAAGTGGCAAGACTGTGTGGCGTGGGCTCTTGGCCACTG
GAAACTCTGCTTTCATTATGGCATCAAACAGCTGCTGAGGCACTTCCACCTAATAAAGTCTTGAGGAT
GGAACCTCCTTCTGGTACAGTCCCAAACAGTGTCCCAGCCCTTGGAGTTTGACACCAACCAAGACACAC
ACCTCCTCTACGTACTGGCAGCTGCCAACCTGTATGCCCAGATGCATGGGCTGCCTGGCTCACAGGACTG
GACTGCACTCAGGGAGCTGCTGAAGCTGCTGCCACAGCCTGACCCCCAACAGATGGCCCCCATCTTTGCT
AGTAATCTAGAGTGGCTTCGGCTTCTGCTGAGTTTGGCCCTGAGCAGCAGAAGGAACTGAACAAAGCCC
TGGAGTCTGGAGTGTGGGCCCTCCCCTGAAGCCTCTGATGTTTGAAGGATGATGACAGCAACTTCCA
TGTGGACTTTGTGTAGCGGCAGCTAGCCTGAGATGTCAGAACTACGGGATTCCACCGGTCAACCGTGCC
CAGAGCAAGCAATTGTGGGCCAGATTATCCACGCCATTGCCACCACTACAGCAGCTGTGGCAGGCCTGT
TGGGCCTGGAGCTGTATAAGGTGGTGTGAGTGGGCCACGGCCTCGTAGTGCCTTTCGCCACAGCTACCTACA
TCTGGCTGAAAACCTCATCCGCTATATGCCTTTTGGCCCAGCCATCCAGACGTTCCATCACCTGAAG
TGGACCTCTTGGGACCGTCTGAAGGTACCAGCTGGGCAGCCTGAGAGGACCCTGGAGTCGCTGCTGGCTC
ATCTTCAGGAGCAGCACGGGTTGAGGGTGGAGTCTGCTGCACGGCTCAGCCCTGCTCTATGCGGCCGG
ATGGTCACCTGAAAAGCAGGCCACAGCCTGCCCTCAGGGTACAGAACTGGTTACAGCAGCTGACAGGC
CAGGCACCTGCTCCTGGGCAGCGGGTGTGGTGTAGAGCTGAGCTGTGAGGGTGACGACGAGGACACTG
CCTTCCACCTCTGCACTATGAGCTG
    
```

ACGCGTACGCGGCCGCTCGAG - GFP Tag - GTTTAA

Protein Sequence:

>RG202883 representing NM_003335
 Red=Cloning site Green=Tags(s)

```

MDALDASKLLDEELYSRQLYVLGSPAMQRIQGARVLSVGLQGLGAEVAKNLVLMGVGSLTLHDPHPTCWS
DLAAQFLLSEQDLERSRAEASQELLAQLNRAVQVVVHTGDITEDLLLDFQVVVLTAAKLEEQKLVGTLCH
KHGVCFLAADTRGLVGQLFCDFGEDFTVQDPTEAEPLTAAIQHISQGSPIGLTLRKGANTHYFRDGLVT
FSGIEGMVELNDCDPRSIVHREDGSLEIGDTTTFSRYLGGAITEVKRPKTVRHKSLDALLQPHVVAQS
SQEVHHAHCLHQAFALHKFQHLHGRPPQWPDPVDAETVVGLARDLEPLKRTREEEPLLEPLDEALVRTVA
LSSAGVLSPMVAMLGAVAAQEVKAI SRKFMPLDQWL YFDALDCLPEDGELL PSPEDCALRGSRYDQIA
VFGAGFQEKLRQHLYLLVGAGAI GCELLKVFALVGLGAGNSGGLTVVMDHIERSNLSRQFLFRSQDVGR
PKAEVAAAAARGLNPDQVLIPLTYPLDPTTEHIYGDNFFSRVDGVAALDSFQARRVVAARCTHYLKPLL
EAGTSGTWGSATVFMHVTEAYRAPASAAASEDAPYPVCTVRYFPSTAETHLQWARHEFEELFRLSAETI
NHHQQAHTSLADMDEPQTLTLLKPVLGVL RVRPQNWQDCVAWALGHWKL CFHYGIKQLLRHFPPNKVLED
GTPFWSGPKQCPQPLEFDTNQDTHLLYVLAANLYAQMHGLPGSQDWTALRELLKLLPQDPQMAPIFA
SNLELASASAFAEFQPEQKELNKALEVWSVGPPLKPLMFEKDDSNFHVDFVVAASLRCQNYGIPPVNRA
QSKRIVGQIIPAIATTTAAVAGLLGLELYKVVSGPRPRSAFRHSYLHLAENYLIRYMPFAPAIQTFHHLK
WTSWDRLKVPAGQPPTLESLLAHLQEHLRVRILLHGSALLYAAGWSPEKQAQHLPLRVTEL VQQLTG
QAPAPGQRVLLVLEL SCEGDEDTAFPPPLHYEL
    
```

TRTRPLE - GFP Tag - V

Restriction Sites:

Sgfl-Mlul

Cloning Scheme:


ACCN: NM_003335

ORF Size: 3036 bp

OTI Disclaimer: The molecular sequence of this clone aligns with the gene accession number as a point of reference only. However, individual transcript sequences of the same gene can differ through naturally occurring variations (e.g. polymorphisms), each with its own valid existence. This clone is substantially in agreement with the reference, but a complete review of all prevailing variants is recommended prior to use. [More info](#)

OTI Annotation: This clone was engineered to express the complete ORF with an expression tag. Expression varies depending on the nature of the gene.

Components: The ORF clone is ion-exchange column purified and shipped in a 2D barcoded Matrix tube containing 10ug of transfection-ready, dried plasmid DNA (reconstitute with 100 ul of water).

Reconstitution Method:

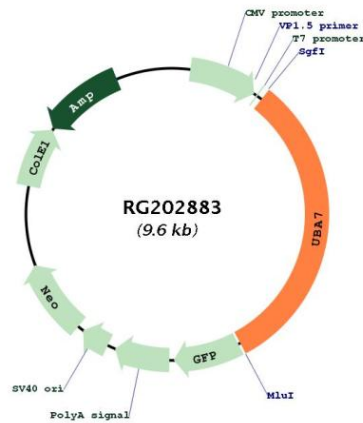
1. Centrifuge at 5,000xg for 5min.
2. Carefully open the tube and add 100ul of sterile water to dissolve the DNA.
3. Close the tube and incubate for 10 minutes at room temperature.
4. Briefly vortex the tube and then do a quick spin (less than 5000xg) to concentrate the liquid at the bottom.
5. Store the suspended plasmid at -20°C. The DNA is stable for at least one year from date of shipping when stored at -20°C.

RefSeq: [NM_003335.3](#)

RefSeq Size: 3330 bp

RefSeq ORF:	3039 bp
Locus ID:	7318
UniProt ID:	P41226
Cytogenetics:	3p21.31
Domains:	UBACT, ThiF
Protein Families:	Druggable Genome
Protein Pathways:	Parkinson's disease, Ubiquitin mediated proteolysis
Gene Summary:	The modification of proteins with ubiquitin is an important cellular mechanism for targeting abnormal or short-lived proteins for degradation. Ubiquitination involves at least three classes of enzymes: ubiquitin-activating enzymes, or E1s, ubiquitin-conjugating enzymes, or E2s, and ubiquitin-protein ligases, or E3s. This gene encodes a member of the E1 ubiquitin-activating enzyme family. The encoded enzyme is a retinoid target that triggers promyelocytic leukemia (PML)/retinoic acid receptor alpha (RARalpha) degradation and apoptosis in acute promyelocytic leukemia, where it is involved in the conjugation of the ubiquitin-like interferon-stimulated gene 15 protein. [provided by RefSeq, Jul 2008]

Product images:



Circular map for RG202883