

Product datasheet for **RG202882**

ZNF136 (NM_003437) Human Tagged ORF Clone

Product data:

Product Type:	Expression Plasmids
Product Name:	ZNF136 (NM_003437) Human Tagged ORF Clone
Tag:	TurboGFP
Symbol:	ZNF136
Synonyms:	pHZ-20
Mammalian Cell Selection:	Neomycin
Vector:	pCMV6-AC-GFP (PS100010)
E. coli Selection:	Ampicillin (100 ug/mL)



[View online »](#)

ORF Nucleotide Sequence:

>RG202882 representing NM_003437
 Red=Cloning site Blue=ORF Green=Tags(s)

TTTTGTAATACGACTCACTATAGGGCGGCCGGAATTCGTCGACTGGATCCGGTACCGAGGAGATCTGCC
 GCC**CGGATCGCC**

ATGGACTCGGTGGCTTTTGAGGATGTAGATGTGAACCTCACCCAGGAGGAGTGGCTTTGCTAGATCCTT
 CCCAGAAGAATCTCTACAGAGATGTGATGTGGAAACCATGAGGAATCTGGCCTCTATAGGGAAAAAATG
 GAAGGACCAGAACATTAAGATCACTACAAACCCGAGGAGAAAATCTAAGAAGTCATATGTTAGAAAGA
 CTCTATCAAATAAGGATGGTAGTCAGCGTGGAGGAATTTTAGCCAGTTTGCAAATCAGAATCTGAGCA
 AGAAAAACCTGGAGTGAACCTCTGTGAAAGCATTGTATATGGAGAAGTCAGCATGGGTCAGTCATCCCT
 TAATAGACACATCAAAGATCACAGTGGACATGAACCAAAGGAATATCAGGAATATGGAGAGAAGCCAGAT
 ACACGTAACCAGTGTGGAAACCTTCAGTTCTCACCCTCTTCGAACACATGAGATAATTCACACTG
 GAGAGAACTCTATGATTGTAAGGAATGTGAAAAACCTCTTTTCTCTCAAAGAATTAGAAGACACAT
 CATCACACACAGTGGATATACACCATATAAATGTAAGGTGTGGGAAAGCTTTTGATTATCCAGTAGA
 TTTCGAACACATGAAAGAAGTCACACTGGAGAGAAACCTATGAATGTCAGGAATGTGGAAAAGCCTTCA
 CTTGTATCACAAGTGTTCGAAGACACATGATAAAGCACACTGGAGATGGACCTTATAAATGTAAGGTATG
 TGGGAAACCTTTTATTCTCTGAGTTCATTTCAAGTGCATGAAAGAATTCACACTGGAGAAAAACCTTT
 AAATGTAAGCAATGTGGTAAAGCCTTCAGTTGTTCCCAACCTTACGAATACATGAAAGAACCATACTG
 GAGAGAAACCTTATGAATGCAAGCAGTGTGGGAAGGCCTTCAGTTATCTCCCTCCCTTCGACTACATGA
 AAGAATTCACACTGGTGAAGAACCTTCGATGTAACAATGTGGTAAAGCCTTTAGATCTGCCAGTACC
 TTTCAAATACATGAAAGGACTCACACTGGAGAAAAACCTTATGAATGTAAGGAATGTGGGAAGCATTCA
 GTTGTATCCCAAGTATGCGAAGACACATGATAAAACATACTGGAGAAGGACCTTATAAATGTAAGGTATG
 TGGGAAACCTTTTATTCTCTGAGTCCATTTTCAATACATGAAAGAACTCACACTGGAGAGAAACCTTAT
 GTATGTAACATTGTGGTAAAGCTTTCGTTTCTCAACATCAATTCGAATACATGAAAGAACTCATACTG
 GAGAGAAACCTATGAGTGAAGCAATGTGGGAAAGCCTTCAGTTATCTCAACTCCTTCGAACACATGA
 AATGATTCACACTGGTGAAGAACCTTTGAATGTAAGCGATGTGGTAAAGCCTTTAGATCTTCTAGTTCC
 TTTGACTACATGAAAGGACTCACACTGGACAGAAACCTATCATTGCAAGGAATGTGGGAAAGCCTATT
 CTTGCCGTGCCAGCTTTCAGAGACACATGTTAACACATGCTGAAGATGGACCACCTATAAATGCATGTG
 GAAAGCCTT

ACGCGTACGCGGCCGCTCGAG - GFP Tag - GTTTAA

Protein Sequence:

>RG202882 representing NM_003437
 Red=Cloning site Green=Tags(s)

MDSVAFEDVDVNFTEEWALLDPSQKNLYRDMWETMRNLASIGKKWKDQNIKDHYKHRGRNLRSHMLER
 LYQTKDGSQRGGIFSQFANQNL SKKIPGVKLCESIVYGEVSMGQSSLNRHIKDHSGHEPKEYQEYGEKPD
 TRNQCWKPFSSHHSFRTHEIIHTGEKLYDCKEKGKTFSLKRIRRHIIHTSGYTPYKCKVCGKAFDYPSR
 FRTHERSHTGEKPYECQECGKAFTCITSVRRHMIKHTGDGPYKCKVCGKPFHSLSSFQVHERIHTGEKPF
 KCKQCGKAFSCSPTLRIHERHTHTGEKPYECKQCGKAFSYLPSLRLHERIHTGEKPFVCKQCGKAFRSAST
 FQIHERHTHTGEKPYECKECAFSCIPSMRRHMIKHTGEGPYKCKVCGKPFHSLSPFRIHERHTHTGEKPY
 VCKHCGKAFVSSTSIHERHTHTGEKPYECKQCGKAFSYLNSFRTHEMIHTGEKPFECKRCGKAFRSSSS
 FRLHERHTHTGQKPYHCKEKGKAYSCRASFQRHMLTHAEDGPPYKCMWESL

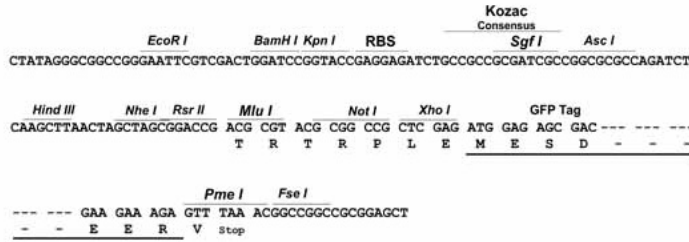
TRTRPLE - GFP Tag - V

Restriction Sites:

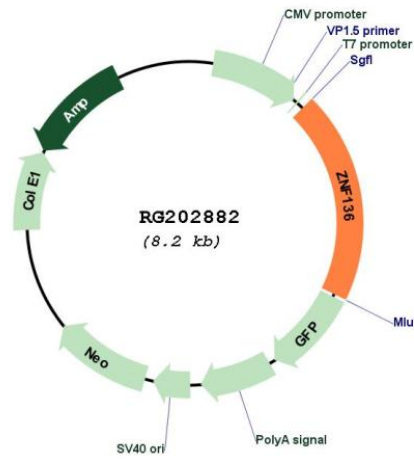
Sgfl-MluI

Cloning Scheme:

Cloning sites used for ORF Shutting:



Plasmid Map:



ACCN:	NM_003437
ORF Size:	1620 bp
OTI Disclaimer:	The molecular sequence of this clone aligns with the gene accession number as a point of reference only. However, individual transcript sequences of the same gene can differ through naturally occurring variations (e.g. polymorphisms), each with its own valid existence. This clone is substantially in agreement with the reference, but a complete review of all prevailing variants is recommended prior to use. More info
OTI Annotation:	This clone was engineered to express the complete ORF with an expression tag. Expression varies depending on the nature of the gene.
Components:	The ORF clone is ion-exchange column purified and shipped in a 2D barcoded Matrix tube containing 10ug of transfection-ready, dried plasmid DNA (reconstitute with 100 ul of water).
Reconstitution Method:	<ol style="list-style-type: none">1. Centrifuge at 5,000xg for 5min.2. Carefully open the tube and add 100ul of sterile water to dissolve the DNA.3. Close the tube and incubate for 10 minutes at room temperature.4. Briefly vortex the tube and then do a quick spin (less than 5000xg) to concentrate the liquid at the bottom.5. Store the suspended plasmid at -20°C. The DNA is stable for at least one year from date of shipping when stored at -20°C.
RefSeq:	NM_003437.5
RefSeq Size:	2988 bp
RefSeq ORF:	1623 bp
Locus ID:	7695
UniProt ID:	P52737
Cytogenetics:	19p13.2
Domains:	KRAB, zf-C2H2
Protein Families:	Transcription Factors
Gene Summary:	This gene encodes a zinc finger protein containing a Kruppel-associated box (KRAB) A-box domain at its N-terminus, followed by fourteen contiguous C2H2 zinc finger domains and a degenerate zinc finger. The KRAB A-box showed weak transcriptional repressor activity in a reporter gene assay. Alternative splicing results in multiple transcript variants encoding different isoforms. [provided by RefSeq, Dec 2016]