

Product datasheet for **RG202874**

PIGQ (NM_148920) Human Tagged ORF Clone

Product data:

Product Type:	Expression Plasmids
Product Name:	PIGQ (NM_148920) Human Tagged ORF Clone
Tag:	TurboGFP
Symbol:	PIGQ
Synonyms:	c407A10.1; DEE77; EIEE77; GPI1
Mammalian Cell Selection:	Neomycin
Vector:	pCMV6-AC-GFP (PS100010)
E. coli Selection:	Ampicillin (100 ug/mL)



[View online »](#)

ORF Nucleotide
Sequence:

>RG202874 representing NM_148920
Red=Cloning site Blue=ORF Green=Tags(s)

TTTTGTAATACGACTCACTATAGGGCGGCCGGAATTCGTCGACTGGATCCGGTACCGAGGAGATCTGCC
GCC**CGCATCGCC**

ATGGTGCTCAAGGCCTTCTTCCCACGTGCTGCGTCTCGACGGACAGCGGGCTGCTGGTGGGACGGTGGG
TGCCGGAGCAGAGCAGCGCGTGGTCTGGCGGTCTGCACTTCCCTTTCATCCCCATCCAGGTCAAGCA
GCTCCTGGCCCAGGTGCGGCAGGCCAGCCAGGTGGGCGTGGCCGTGCTGGGCACCTGGTGCCACTGCCGG
CAGGAGCCGAGGAGAGCCTGGGCCGCTTCTGGAGAGCCTGGGTGCTGTCTTCCCCATGAGCCCTGGC
TGCGGCTGTGCCGGGAGAGAGCGGCACGTTCTGGAGCTGCGAGGCCACCCACGGCAAGCGCCACTGC
CCCCGGTGCCCTGGTGAGGACCAGGTATGCTCATCTTCTATGACCAGCGCCAGGTGTTGCTGTACAG
CTACACCTGCCACCGTCTTGGCCAGCCAGGCTGGAGCCACCACTGCCAGCACGGGGGGCTGGCTG
CCGTCTTCGACACGGTAGCACGCAGTGAGGTGCTCTTCCGAGTGACCGCTTTGATGAGGGCCCCGTGGC
GCTGAGCCACTGGCAGTCGGAGGGCGTGGAGGCCAGCATCCTCGCGGAGCTGGCCAGGCGAGCCTCGGA
CCATTTGCCTGCTGTTGGCCAGCCTGCTGCTGGTCTCAGCTGTAGTGCCTGCCGAGTGTTC AAGC
TCTGGCCCTGTCTTCTCGGGAGCAAACCTCCACGTGCGAACAGCTCCGGCACCGGCTGGAGACCT
CACGCTAATCTTCAGTACACGGAAGGCGGAGAACCCTGCCAGCTGATGAGGAAGGCCAACACGGTGGCC
TCTGTGCTGTGGACGTGGCCCTGGGCCTCATGCTGCTGTCTGGCTCCACGGGAGAAGCCGCATCGGGC
ATCTGGCCGACGCCCTCGTTCCTGTGGCTGACCACGTGGCCGAGGAGCTCCAGCATCTGCTGCAGTGGCT
GATGGGTGCTCCCGCCGGGCTCAAGATGAACCGTGCCTGACCAGGTGCTGGGCCGCTTCTTCTCTAC
CACATCCACCTGTGGATCAGTACATCCACCTCATGTCCCCTTCGTGGAGCACATCCTTTGGCACGTGG
GCCTCTCGGCCCTGCCTGGGCTGACGGTGGCCCTGTCCCTCCTCTCGGACATTATCGCCCTCCTCACCTT
CCACATCTACTGCTTTTACGTCTATGGAGCCAGGCTGTACTGCCTGAAGATCCATGGCCTGTCTACTG
TGGCGTCTGTTCCGGGGAGAAGTGAACGTTCTGCGCCAGCGCGTGGACTCCTGTTCTATGACCTGG
ACCAGCTGTTTCATCGGGACTCTGCTCTTACCATCCTGCTCTTCTCCTGCCTACCACAGCCCTGTA
CCTGGTGTTCACCCTGCTCCGGCTCCTGGTGGTGCCTGTCAGGGCCTGATCCATCTGCTCGTGGACCTC
ATCAACTCCCTGCCGCTGTACTCACTGGGTCTTCCGGCTCTGCCGGCCCTACAGGCTGGCGGATAAACCA
CTGCCCTACAGCCGCGTGGTGCACACCTACCGCCTCCCAGCTGTGGCTGCCACCCCAAGCACTCCTGGG
GCGCCCTGTGCCCAAGCTGTTCTTGGGAGCTCATCTACCCCTGGAGGCAGAGAGGGGACAAGCAGGA
CTGAGGGAAGTGTGGCTCGCCTGGCACCACACAGGCCACAGCCAGCCATCTGCTCTGCCAGGTTGGC
ACCAGCTCAGCTGGCGCATGTCTGTGCTTTGTGGACGCTGCTGTGTGCTCCTGAACACGGCAGGCCTG
CTATCACACCTTGGGCTTGGAGGTGATTGGGAGTGAGCAGATGTGGGGTGGCCAGCCAGGCTGGCCGCA
CTCCATCACTGGCACTGCCTGCCTTGGGACCCGCTTCCCACCTGCTGCGGTACCATGGTGGCGAGCACA
GCAACCCAGGTGTCAGAGCACTGCCCATGCCACCTGTGTACCCAGGTCCAGAGGGTCCGTCCACC
ACAGCAGCCCCAGGTGGAGGGCTGGTCTCCCTGGGGGCTCCCCAGTGGCTCTGCCTGGCTGTGGGGTG
GAGGGACCTTGCAGGATGAACCCCAAGTCCCAGGCACCCTCTAGCTCCCTCAGCCGAACAGCACCCCTG
CATCTGGGGATTGAAGCAGTCGCTGACCCCGTCCCCAGCGGGCCCGGGCCCTACTCCCTGAACCACA
CGGGGTTTATTTGCGGATGTTCCCTGGAGAGTTCGCTTTG

ACGCGTACGCGGCCGCTCGAG - GFP Tag - GTTTAA

Protein Sequence: >RG202874 representing NM_148920
 Red=Cloning site Green=Tags(s)

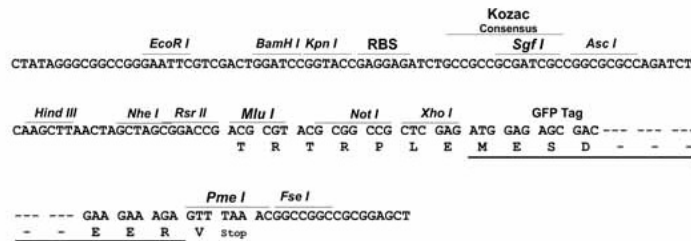
MVLKAFPPTCCVSTDSGLLVGRWVPEQSSAVVLAVLHFFPIPIQVKQLLAQVRQASQVGVAVLGTWCHCR
 QEPEESLGRFLES LGAVFPHEPWLRLCRERGGTFWSCEATHRQAPTAPGAPGEDQVMLIFYDQRQVLLSQ
 LHLPTVLPDRQAGATTASTGGLAAVFDTVARSEVLRSDRFDEGPVRLSHWQSEGVEASILAELARRASG
 PICLLLASLLSLVSAVSACRVFKLWPLSFLGSKLSTCEQLRHRLEHLTLIFSTRKAENPAQLMRKANTVA
 SVLLDVALGLMLLSWLHGRSRIGHLADALVPADHVAEELQHLLQWLMGAPAGLKMNRALDQVLGRFFLY
 HIHLWISYIHLMSPFVEHILWHVGLSACLGLTVALSLLSDIIALLTFHIYCFYVYGARLYCLKIHGLSSL
 WRLFRGKKWNVLRQRVDSYDLDQLFIGTLLFTILLFLLPTTALYYLVFTLLRLLVVAVQGLIHLLVDL
 INSLPLYSGLRLCRPYRLADKPTALQPRGAHLPPPQLWLPPQALLGRPVPQAVPWGAHLPLEAERGQAG
 LRELLARLAPPHGHSQPSALPGWHQLSWRMSCALWTL LCAPEHGRPCYHTLGLEVIGSEQMWGWPARLAA
 LHHWHCLPWDPLPTCCGHHGGEHSNPRCPEHCPMPTLCTQVQVRPPQPQVEGWSPWGLPSGSALAVGV
 EGPCQDEPPSPRHPLAPSAEQHPASGGLKQSLTPVPSGPGPSLPEPHGVYLRMFPGEVAL

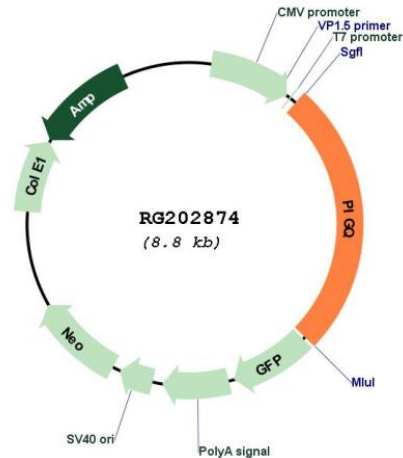
TRTRPLE - GFP Tag - V

Restriction Sites: SgfI-MluI

Cloning Scheme:

Cloning sites used for ORF Shutting:



Plasmid Map:


ACCN: NM_148920

ORF Size: 2280 bp

OTI Disclaimer: The molecular sequence of this clone aligns with the gene accession number as a point of reference only. However, individual transcript sequences of the same gene can differ through naturally occurring variations (e.g. polymorphisms), each with its own valid existence. This clone is substantially in agreement with the reference, but a complete review of all prevailing variants is recommended prior to use. [More info](#)

OTI Annotation: This clone was engineered to express the complete ORF with an expression tag. Expression varies depending on the nature of the gene.

Components: The ORF clone is ion-exchange column purified and shipped in a 2D barcoded Matrix tube containing 10ug of transfection-ready, dried plasmid DNA (reconstitute with 100 ul of water).

Reconstitution Method:

1. Centrifuge at 5,000xg for 5min.
2. Carefully open the tube and add 100ul of sterile water to dissolve the DNA.
3. Close the tube and incubate for 10 minutes at room temperature.
4. Briefly vortex the tube and then do a quick spin (less than 5000xg) to concentrate the liquid at the bottom.
5. Store the suspended plasmid at -20°C. The DNA is stable for at least one year from date of shipping when stored at -20°C.

RefSeq: [NM_148920.1](#), [NP_683721.1](#)

RefSeq Size: 2878 bp

RefSeq ORF: 2283 bp

Locus ID: 9091

UniProt ID:	Q9BRB3
Cytogenetics:	16p13.3
Domains:	Gpi1
Protein Families:	Transmembrane
Protein Pathways:	Glycosylphosphatidylinositol(GPI)-anchor biosynthesis, Metabolic pathways
Gene Summary:	<p>This gene is involved in the first step in glycosylphosphatidylinositol (GPI)-anchor biosynthesis. The GPI-anchor is a glycolipid found on many blood cells and serves to anchor proteins to the cell surface. This gene encodes a N-acetylglucosaminyl transferase component that is part of the complex that catalyzes transfer of N-acetylglucosamine (GlcNAc) from UDP-GlcNAc to phosphatidylinositol (PI). Alternatively spliced transcript variants encoding different isoforms have been found for this gene. [provided by RefSeq, Jun 2012]</p>