

## Product datasheet for **RG202841**

### NECAP2 (NM\_018090) Human Tagged ORF Clone

#### Product data:

Product Type:	Expression Plasmids
Product Name:	NECAP2 (NM_018090) Human Tagged ORF Clone
Tag:	TurboGFP
Symbol:	NECAP2
Mammalian Cell Selection:	Neomycin
Vector:	pCMV6-AC-GFP (PS100010)
E. coli Selection:	Ampicillin (100 ug/mL)
ORF Nucleotide Sequence:	>RG202841 representing NM_018090 Red=Cloning site Blue=ORF Green=Tags(s)

TTTTGTAATACGACTCACTATAGGGCGGCCGGAATTCGTCGACTGGATCCGGTACCGAGGAGATCTGCC  
GCC**CGATCGCC**

ATGGAGGAGAGCGGGTACGAGTCGGTGCTCTGTGTCAAGCCTGACGTCCACGTCTACCGCATCCCTCCGC  
GGGCTACCAACCGTGGCTACAGGGCTGCGGAGTGGCAGCTGGACCAGCCATCATGGAGTGGCCGGCTGAG  
GATCACTGCAAAGGGACAGATGGCCTACATCAAGCTGGAGGACAGGACGTGAGGGGAGCTCTTTGCTCAG  
GCCCGGTGGATCAGTTTCTGGCACAGCTGTGGAGAGTGTGACGGATTCCAGCAGTACTTCGTGATCC  
GCATCGAAGATGGAAATGGGCGACGGCGTTTATTGGAATTGGTTCGGGGACCGAGGTGATGCCTTTGA  
CTTCAATGTTGCATTGCAGGACATTTCAAGTGGGTGAAACAGCAGTGTGAATTTGCAAAAACAAGCCAG  
AACCCAGACCAAGGCCCTAAACTGGACCTGGGCTTCAAGGAGGGCCAGACCATCAAGCTCAACATCGCAA  
ACATGAAGAAGAAGGAAGGAGCAGCTGGGAATCCCGAGTCCGGCCTGCCAGCACAGGAGGGCTGAGCCT  
GCTTCCCCTCCCCAGGGGGAAAACCTCCACCCTGATCCCTCCCCTGGGGAGCAGTTGGCTGTGGG  
GGATCCCTCGTCCAGCCAGCAGTTGCTCCAGTTCAGGAGGTGCTCCTGTACCCTGGCCACAGCCCAATC  
CTGCCACTGCTGACATCTGGGGAGACTTACCAAATCTACAGGATCAACTCCAGCCAGACCCAGCCAGG  
CACAGGCTGGTCCAGTTC

**ACGCGT**ACGCGGCCGCTCGAG - GFP Tag - GTTTAA



[View online »](#)

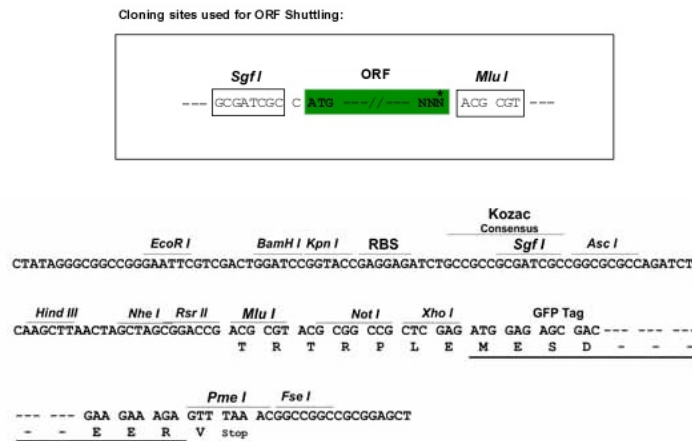
**Protein Sequence:** >RG202841 representing NM\_018090  
 Red=Cloning site Green=Tags(s)

MEESGYESVLCVKPDPVHVYRIPPRATNRGYRAAEWQLDQPSWSGRLRITAKGQMAYIKLEDRTSGELFAQ  
 APVDQFPGTAVESVTDSSRYFVIRIEDGNRRAFIGIGFGDRGDAFDNFVALQDHFKWKVQCEFAKQAQ  
 NPDQGPKLDLGFKEGQTIKLNIANMKKKEGAAGNPRVRPASTGGLSLLPPPPGGKSTLIPPPGQLAVG  
 GSLVQPAVAPSSGGAPVWPQPNPATADIWGDFTKSTGSTSSQTQPGTGWVQF

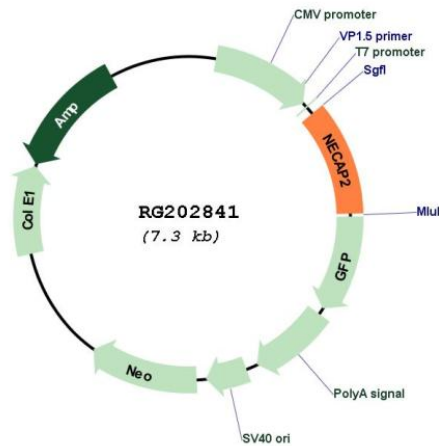
TRTRPLE - GFP Tag - V

**Restriction Sites:** SgfI-MluI

**Cloning Scheme:**



**Plasmid Map:**



**ACCN:** NM\_018090

**ORF Size:** 789 bp

<b>OTI Disclaimer:</b>	The molecular sequence of this clone aligns with the gene accession number as a point of reference only. However, individual transcript sequences of the same gene can differ through naturally occurring variations (e.g. polymorphisms), each with its own valid existence. This clone is substantially in agreement with the reference, but a complete review of all prevailing variants is recommended prior to use. <a href="#">More info</a>
<b>OTI Annotation:</b>	This clone was engineered to express the complete ORF with an expression tag. Expression varies depending on the nature of the gene.
<b>Components:</b>	The ORF clone is ion-exchange column purified and shipped in a 2D barcoded Matrix tube containing 10ug of transfection-ready, dried plasmid DNA (reconstitute with 100 ul of water).
<b>Reconstitution Method:</b>	<ol style="list-style-type: none"><li>1. Centrifuge at 5,000xg for 5min.</li><li>2. Carefully open the tube and add 100ul of sterile water to dissolve the DNA.</li><li>3. Close the tube and incubate for 10 minutes at room temperature.</li><li>4. Briefly vortex the tube and then do a quick spin (less than 5000xg) to concentrate the liquid at the bottom.</li><li>5. Store the suspended plasmid at -20°C. The DNA is stable for at least one year from date of shipping when stored at -20°C.</li></ol>
<b>RefSeq:</b>	<a href="#">NM_018090.5</a>
<b>RefSeq Size:</b>	2037 bp
<b>RefSeq ORF:</b>	792 bp
<b>Locus ID:</b>	55707
<b>UniProt ID:</b>	<a href="#">Q9NVZ3</a>
<b>Cytogenetics:</b>	1p36.13
<b>Gene Summary:</b>	This gene likely encodes a member of the adaptin-ear-binding coat-associated protein family. Studies of a similar protein in rat suggest a role in clathrin-mediated endocytosis. Alternatively spliced transcript variants have been described. [provided by RefSeq, Feb 2009]