

Product datasheet for **RG202829**

GTSE1 (NM_016426) Human Tagged ORF Clone

Product data:

Product Type:	Expression Plasmids
Product Name:	GTSE1 (NM_016426) Human Tagged ORF Clone
Tag:	TurboGFP
Symbol:	GTSE1
Synonyms:	B99
Mammalian Cell Selection:	Neomycin
Vector:	pCMV6-AC-GFP (PS100010)
E. coli Selection:	Ampicillin (100 ug/mL)



[View online »](#)

ORF Nucleotide Sequence:

>RG202829 representing NM_016426
 Red=Cloning site Blue=ORF Green=Tags(s)

TTTTGTAATACGACTCACTATAGGGCGGCCGGAATTCGTCGACTGGATCCGGTACCGAGGAGATCTGCC
 GCC**CGCATCGCC**

ATGGATGACCCTAAGAAGGAAGACATTCTCTTTTGGCCGATGAAAAATTTGACTTCGATCTTTTCATTGT
 CTCTTCGAGTGCAAATGAAGATGATGAAGTCTCTTCGACCCTTTGGACATAAAGAAAGATGTATTGC
 TGCCAGCTTGGAATTAATAATCCGGTTCGCCAACAGCCTCCGTTGCCACATCTGAGAGTCCCTTTGCC
 TGGAGCCCTCTGGCCGGGAGAAGTTCGTGGAGGTGTACAAAGAAGCTCACTTACTGGCTTTACACATTG
 AGAGCAGCAGCCGAACAGGCAGCCAAAGCTGCCAAGCCTGAAGACCCTCGGAGCCAGGGCGTGGAAAG
 ATTCATACAGGAGTCAAATTAATAAACTCTTTGAGAAAGAAAAGGAAATGAAGAAAAGCCCCACG
 TCTCTTAAAGGGAGACATACTACCTGTCAGACAGCCCTTGCTGGGGCCCCCTGTGGGTGAGCCTCGGC
 TCTTGGCCTCCTCCCGGCCCTGCCAGCTCTGGTGCCAGGCCCGCCTCACCCGGGCGCCGGGGCTCC
 GCACTCTGCTCATGCTTTGCCAGGAATCATGCACTGCTCATGTGCAAGTCAGGCAGCGACTCAGAGG
 AAGCCCGGACCAAATTCGCTGCTGCCTCGAGCGGCCTCTGTTAGAGGAAGAAGCATCCCTGGGGCTGCGG
 AGAAGCCCAAGAAAGAGATTCCAGCTAGTCCTCCAGGACAAAAATCCAGCTGAGAAGGAATCCCACCG
 GGATGTTCTCCCTGACAAACCTGCCCGGGTGTGTCAATGTGCCGGCCCGGAAGCCACTTGGGCCAG
 GGCAAGCGGGCGATCCCTGTTCCAAACAAGTTGGGGTGAAGAAGACCCTGTTAAAAGCACCCGGCTCTA
 CCAGCAATCTCGCAAGGAAGTCTCCTCGGGCCCTGTTTGGAGCGGGGCATCCAGTGCCTGCACATCCCC
 AGCAGTGGGCAAGCTAAATCAAGTGAATTTGCAAGTATTCCTGCAAATAGCTCCCGCCTCTGTCAAAC
 ATCAGCAAGTCAGGCAGAATGGGACCCGCATGCTGCGCCAGCTCTGCCTGCAGGCCCTGTGGGGCAT
 CCTCCTGGCAGGCCAAGCGGGTCGATGTTTCTGAGCTGGCAGCGGAGCAGCTCACGGCACCCCCCTCAGC
 ATCCCCACCCAACCCAGACTCCGGAAGGTGGCGGCCAGTGGCTGAACTCCAGTTGCGCTTGGTCAGAA
 TCTTCTCAATTGAATAAGACTAGAAGTATCAGACGGCGAGATTCTGTCTAAATCCAAGACAAAGGTTA
 TGCTACTCTACAAATCAATTTAAAATTCCTAAGTTTTCTATTGGTACTCCCCGGACAGCTCAACACC
 AAAGCTTTCGCGGGCACAGCGGCCGAGTCGTGCACGTGAGTTGGCAGGGTCACTGTCCACAGCACCCCG
 GTTAGACGCTCATCTGGGCCAGCACCAAAAGCCTGCTGAGCGCACGGCGTGTGTAGCCTTGGCCACAC
 CCGCCAGCGGGCTGCTCTGGCCTCCACCGATGACCCCAAAACGATGCCAGGGCCGTGGGCTCTCC
 CCTGTGTGTGCCAGCTCGGAGACGTTCTCTGAGCCCCGAAGAACTCTGCAATGAGAACTGAACCAACA
 AGGGAGAGCAACAGAAAGACAGATTCCAGGCTGGTGGATGTGTCCCTGACAGGGGTTCTCCTCTCCC
 GTGTGCCTCAGGCACTTAACTTTTCTCCAGAGGAAAGCGATTCTACTTTCTCAAAGTACTGCCACAGA
 AGTAGCTCGGGAGGAAGCCAAGCCGGTGGAGATGCAGCCCTAGTGAGGCTCTTCTGTAGATATCAAA
 CTGGAACCACTCGCGTCACTCCAGATGCTGCAAGCCAGCCCTCATTGACCTTCTCTCATCGACTTCT
 GCGATACCCAGAAAGCACACGTGGCTGTAGGATCTGAAAGCAGGCCTCTGATCGACCTCATGACAAACAC
 TCCAGACATGAATAAAAAATGTGGCCAAACCTTACCAGTGGTGGGACAGCTCATAGACCTGAGCTCCCT
 CTGATCCAGCTGAGCCCTGAGGCTGACAAGGAGAAGCTGGATTCCCCACTCCTCAAGTTC

ACGCGTACGCGGCCGCTCGAG - GFP Tag - GTTTAA

Protein Sequence: >RG202829 representing NM_016426
 Red=Cloning site Green=Tags(s)

MDDPKKEDILLLADEKDFDFDLSSSSANEDDEVFFGPFHGKERCIAASLELNNPVPEQPPLPTSESPFA
 WSPLAGKVFVEVYKEAHLALHIESSRNQAAQAAKPEDPRSQGVRFIQESKLIKINLFEKEKEMKKSPT
 SLKRETYLSDSPLLGPVGEPRLLASSPALPSSGAQARLTRAPGPPSAHALPRESCTAHAASQAATQR
 KPGTKLLLPRAASVGRSIPGAAEKPKKEIPASPSRTKIPAEKESHARDVLPDKPAPGAVNVPAAGSHLGG
 GKRAIPVPNKLGKKTLLKAPGSTNLARKSSSGPVWSGASSACTSPAVGKAKSSEFASIPANSSRPLSN
 ISKSGRMGPAMLRPALPAGPVGASSWQAKRVDVSELAAEQLTAPPSASPTQPQTPEGGGQWLNSSCAWSE
 SSQLNKTRSIARRDSCLSNKTVMPTPTNQFKIPKFSIGDSPDSSTPKLSRAQRPQSCTSVGRVTVHSTP
 VRRSSGPAPQSLLSARRVSALPTPASRRCSGLPPMTPKTMPRAVGSPLCVPARRRSSEPRKNSAMRTEPT
 RESNRKTD SRLVDVSPDRGSPSRVPQALNFSPEESDSTFSKSTATEVAREEAKPGGDAAPSEALLVDIK
 LEPLAVTPDAASQPLIDLPLIDFCDTPEAHVAVGSESRPLIDLMTNTPDMNKNVAKPSPVVGQLIDLSSP
 LIQLSPEADKENVDSPLLKF

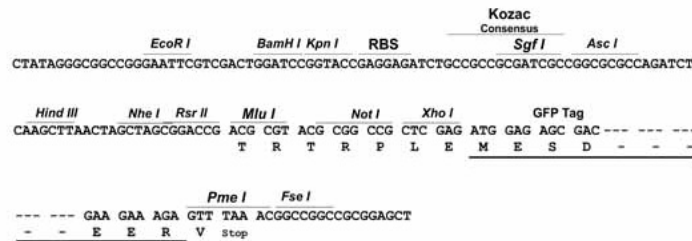
TRTRPLE - GFP Tag - V

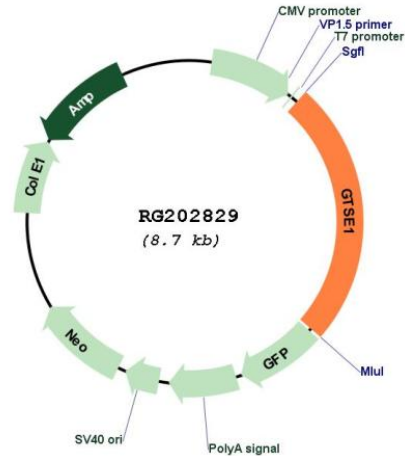
Restriction Sites:

SgfI-MluI

Cloning Scheme:

Cloning sites used for ORF Shuttling:



Plasmid Map:


ACCN: NM_016426

ORF Size: 2160 bp

OTI Disclaimer: The molecular sequence of this clone aligns with the gene accession number as a point of reference only. However, individual transcript sequences of the same gene can differ through naturally occurring variations (e.g. polymorphisms), each with its own valid existence. This clone is substantially in agreement with the reference, but a complete review of all prevailing variants is recommended prior to use. [More info](#)

OTI Annotation: This clone was engineered to express the complete ORF with an expression tag. Expression varies depending on the nature of the gene.

Components: The ORF clone is ion-exchange column purified and shipped in a 2D barcoded Matrix tube containing 10ug of transfection-ready, dried plasmid DNA (reconstitute with 100 ul of water).

Reconstitution Method:

1. Centrifuge at 5,000xg for 5min.
2. Carefully open the tube and add 100ul of sterile water to dissolve the DNA.
3. Close the tube and incubate for 10 minutes at room temperature.
4. Briefly vortex the tube and then do a quick spin (less than 5000xg) to concentrate the liquid at the bottom.
5. Store the suspended plasmid at -20°C. The DNA is stable for at least one year from date of shipping when stored at -20°C.

RefSeq: [NM_016426.4](#), [NP_057510.2](#)

RefSeq Size: 4493 bp

RefSeq ORF: 2220 bp

Locus ID:	51512
UniProt ID:	Q9NYZ3
Cytogenetics:	22q13.31
Protein Families:	Druggable Genome
Protein Pathways:	p53 signaling pathway
Gene Summary:	The protein encoded by this gene is only expressed in the S and G2 phases of the cell cycle, where it colocalizes with cytoplasmic tubulin and microtubules. In response to DNA damage, the encoded protein accumulates in the nucleus and binds the tumor suppressor protein p53, shuttling it out of the nucleus and repressing its ability to induce apoptosis. [provided by RefSeq, Jul 2008]