

Product datasheet for **RG202826**

UBC6e (UBE2J1) (NM_016021) Human Tagged ORF Clone

Product data:

Product Type:	Expression Plasmids
Product Name:	UBC6e (UBE2J1) (NM_016021) Human Tagged ORF Clone
Tag:	TurboGFP
Symbol:	UBC6e
Synonyms:	CGI-76; HSPC153; HSPC205; HSU93243; NCUBE-1; NCUBE1; UBC6; UBC6E; Ubc6p
Mammalian Cell Selection:	Neomycin
Vector:	pCMV6-AC-GFP (PS100010)
E. coli Selection:	Ampicillin (100 ug/mL)
ORF Nucleotide Sequence:	>RG202826 representing NM_016021 Red=Cloning site Blue=ORF Green=Tags(s)

TTTTGTAATACGACTCACTATAGGGCGGCCGGAATTCGTCGACTGGATCCGGTACCGAGGAGATCTGCC
GCC**CGATCGCC**

ATGGAGACCCGCTACAACCTGAAGAGTCCGGCTGTTAAACGTTTAAATGAAAGAAGCGGCAGAATTGAAAG
ATCCAACAGATCATTACCATGCGCAGCCTTTAGAGGATAACCTTTTTGAATGGCACTTACCGTTAGAGG
GCCCCAGACTCCGATTTTGATGGAGGAGTTTATCACGGCGGATAGTACTGCCACCAGAGTATCCCATG
AAACCACCAAGCATTATCTCCTAACGGCTAATGGTCGATTTGAAGTGGCAAGAAAATCTGTTTGAGCA
TCTCAGGCCATCATCCTGAAACTTGGCAGCCTTCTGGAGTATAAGGACAGCATTATTAGCCATCATTGG
GTTTATGCCAACAAAAGGAGAGGGAGCCATAGGTTCTCTAGATTACACTCCTGAGGAAAGAAGAGCACTT
GCCAAAAAATCACAAGATTTCTGTTGTGAAGGATGTGGCTCTGCCATGAAGGATGTCTGTGCCTTTAA
AATCTGGAAGCGATTCAAGCCAAGCTGACCAAGAAGCCAAGAAGCTGGCTAGGCAATAAGCTTTAAGGC
AGAAGTCAATTCTCTGAAAGACTATCTCTGAGTCAGACTTAAACCACTCTTTTCACTAACTGATTTA
CAAGATGATATACCTACAACATTCAGGGTGTACGGCCAGTACATCGTACGGAGTCCAGAATTCCTCAG
CAGCATCTTTCATCAACCTACCAACCTGTAGCTAAGAATACCTCCATGAGCCCTCGACAGCGCCGGGC
CCAGCAGCAGAGTCAGAGAAGGTTGTCTACTTCACCAGATGTAATCCAGGGCCACCAGCCAAGAGACAAC
CACACTGATCATGGTGGGTCAGCTGTACTGATTGTCATCCTGACTTTGGCATTGGCAGCTTTATATTCC
GACGAATATATCTGGCAAACGAATACATATTTGACTTTGAGTTA

ACGCGTACGCGGCCGCTCGAG - GFP Tag - GTTTAA



[View online »](#)

Protein Sequence: >RG202826 representing NM_016021
 Red=Cloning site Green=Tags(s)

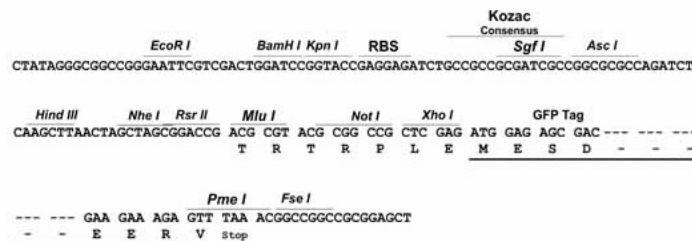
METRYNLKSPAVKRLMKEAAELKDPTDHYHAQPLEDNLFEWHFTVRGPPDSDFDGGVYHGRIVLPPEYPM
 KPPSIILLTANGRFEVGGKICLSISGHPETWQPSWSIRTALLAIIIGFMPKGEAIGSLDYPEERRAL
 AKKSQDFCCEGCGSAMKDVLLPLKSGSDSSQADQEAKELARQISFKAEVNSSGKTISESDLNHSFSLTDL
 QDDIPTTFQGATASTSYGVQNSSAASFHQPTQPVAKNNTSMSRQRRRAQQSQRRRLSTSPDVIQGHQPRDN
 HTDHGGS AVLIVILTLALAALIFRRIYLANEYIFDFEL

TRTRPLE - GFP Tag - V

Restriction Sites: SgfI-MluI

Cloning Scheme:

Cloning sites used for ORF Shuttling:



ACCN: NM_016021

ORF Size: 954 bp

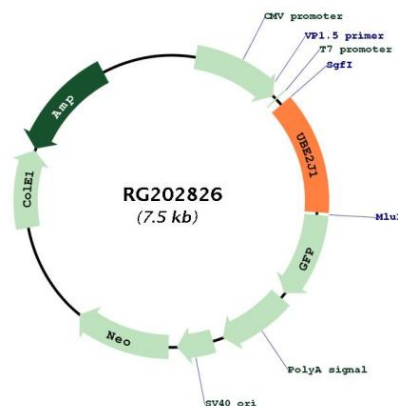
OTI Disclaimer: The molecular sequence of this clone aligns with the gene accession number as a point of reference only. However, individual transcript sequences of the same gene can differ through naturally occurring variations (e.g. polymorphisms), each with its own valid existence. This clone is substantially in agreement with the reference, but a complete review of all prevailing variants is recommended prior to use. [More info](#)

OTI Annotation: This clone was engineered to express the complete ORF with an expression tag. Expression varies depending on the nature of the gene.

Components: The ORF clone is ion-exchange column purified and shipped in a 2D barcoded Matrix tube containing 10ug of transfection-ready, dried plasmid DNA (reconstitute with 100 ul of water).

Reconstitution Method:	<ol style="list-style-type: none">1. Centrifuge at 5,000xg for 5min.2. Carefully open the tube and add 100ul of sterile water to dissolve the DNA.3. Close the tube and incubate for 10 minutes at room temperature.4. Briefly vortex the tube and then do a quick spin (less than 5000xg) to concentrate the liquid at the bottom.5. Store the suspended plasmid at -20°C. The DNA is stable for at least one year from date of shipping when stored at -20°C.
RefSeq:	NM_016021.2 , NP_057105.2
RefSeq Size:	4360 bp
RefSeq ORF:	957 bp
Locus ID:	51465
UniProt ID:	Q9Y385
Cytogenetics:	6q15
Domains:	UBCc
Protein Families:	Transmembrane
Protein Pathways:	Parkinson's disease, Ubiquitin mediated proteolysis
Gene Summary:	The modification of proteins with ubiquitin is an important cellular mechanism for targeting abnormal or short-lived proteins for degradation. Ubiquitination involves at least three classes of enzymes: ubiquitin-activating enzymes, or E1s, ubiquitin-conjugating enzymes, or E2s, and ubiquitin-protein ligases, or E3s. This gene encodes a member of the E2 ubiquitin-conjugating enzyme family. This enzyme is located in the membrane of the endoplasmic reticulum (ER) and may contribute to quality control ER-associated degradation by the ubiquitin-proteasome system. [provided by RefSeq, Jul 2008]

Product images:



Circular map for RG202826