

## Product datasheet for **RG202822**

### **SH3PX1 (SNX9) (NM\_016224) Human Tagged ORF Clone**

#### **Product data:**

Product Type:	Expression Plasmids
Product Name:	SH3PX1 (SNX9) (NM_016224) Human Tagged ORF Clone
Tag:	TurboGFP
Symbol:	SH3PX1
Synonyms:	SDP1; SH3PX1; SH3PXD3A; WISP
Mammalian Cell Selection:	Neomycin
Vector:	pCMV6-AC-GFP (PS100010)
E. coli Selection:	Ampicillin (100 ug/mL)



[View online »](#)

**ORF Nucleotide Sequence:**

>RG202822 representing NM\_016224  
 Red=Cloning site Blue=ORF Green=Tags(s)

TTTTGTAATACGACTCACTATAGGGCGGCCGGAATTCGTCGACTGGATCCGGTACCGAGGAGATCTGCC  
 GCC**CGGATCGCC**

ATGCCACCAAGGCTCGGTTATGTATGATTTTGTCTGCTGAACCTGGAATAATGAAGTACGCGTTAATG  
 AAGGAGAAATCATCAAAATCACAATCCGGATGTAGGTGGAGGATGGCTGGAAGGAAGAAACATCAAAGG  
 AGAACGAGGGCTGGTTCCACAGACTACGTTGAAATTTTACCCAGTGATGAAAAAGATCAATTTTCTTGT  
 GAAAATTCAGTGGCTGACCAAGCCTTCCTTGATTCTCTCAGCCAGCACAGCTCACGCCAGTTCGTCGG  
 CTGCCAGCAACAATCACCAGGTTGGCAGTGGCAATGACCCTGGTCAGCCTGGAGTGCCTCCAAATCTGG  
 GAACTGGGAAAGCTCAGAAGGCTGGGGGGCCAGCCAGAGGGGCTGGAGCCAAAGAAACAAACACT  
 CCCAACAACTGGGACTGCCTTCGGCCACCCAGGCCACCAAGGACCAGCAACTGGTATGATGATG  
 ACTGGGATGAAGACTGGGATGGGCCAAATCCTCTTCTACTTTAAGGATTCAGAGTCACTGATGCAGG  
 CGCGCTCAGCGAGGAAACAGTCGTGCTAGTTCCTCATCCATGAAAATCCCTTAACAAATTTCTGGA  
 TTTGCGAAACCTGGCACGGAACAGTATTTGTTGGCCAAACAAGTACGAAAACCCAAAGAGAAAATCCCA  
 TCATTGTTGGAGATTATGGCCCAATGTGGGTTTACCTACCTCTACTTTTACTGTGTGGTATGAGATCC  
 CAGGAAAGGCTCCAAAATGTATGGTCTAAAGAGCTACATCGAATATCAGCTAACACCTACTAACACTAAT  
 CGATCTGTAACACAGGTATAAGCACTTTGACTGGTTATATGAGCGTCTCCTGGTTAAGTTTGGGTCAG  
 CCATTCCAATCCCTTCTCTCCAGACAAACAAGTACAGGCCGCTTTGAAGAGGAATTTATCAAATGCG  
 CATGGAGAGACTTCAGGCCTGGATGACCAGGATGTGTCCGATCCAGTAACTCAGAAAGTGAAGTTTTC  
 CAGCAGTTCCTAAATTTCCGAGATGAGAAGGAATGAAAATGAAAAGAGGAAGGCCGAGAGAGATGAGC  
 TGGCGGAGTCATGATATTTTCCACCATGGAACAGGACCTGACTTGGACTTAGTAAATAGAGCA  
 GAAGTCCGAGGCTGTGGGAAGTTCACCAAGGCCATGGATGACGCGGTGAAGGAGCTGCTGACGGTGGGG  
 CAGGAGCACTGGAAGCGCTGCACGGGCCATTACCCAAGGAATATCAGAAGATAGGAAAGCCTTCAGAG  
 GTTTGGCCACAGTGTTCAGTTCAGTGGCTATCAAGGTGAAACAGATCTCAATGATGCAATAACAGAAGC  
 AGGAAAGACTTATGAAGAAATGCCAGTCTCGTGGCAGAACAGCCAAAGAAAGATCTCCATTTCTGATG  
 GAATGTAATCACGAGTATAAAGTTTCTTGGCTGCTTCCCTGACATCATTGGCACTCACAAAGGAGCAA  
 TAGAAAAAGTGAAGAAAGTGACAACTAGTTGCAACAAGTAAATCACCTACAAGACAAACAGAACAT  
 GGTGAAGAGAGTCAGCATCATGTCTTACGCGTTGCAAGCTGAGATGAATCACTTTACAGTAACCGGATC  
 TATGATTACAACAGTGCATCCGCTGTACCTGGAGCAGCAAGTGAATTTTACGAAACGATTGCAGAAA  
 AGCTGAGGCAGGCCCTCAGCCGCTTTCCAGTGATG

AG**CGGACCG**ACGCGTACGCGGCCGCTCGAG - GFP Tag - GTTTAA

**Protein Sequence:**

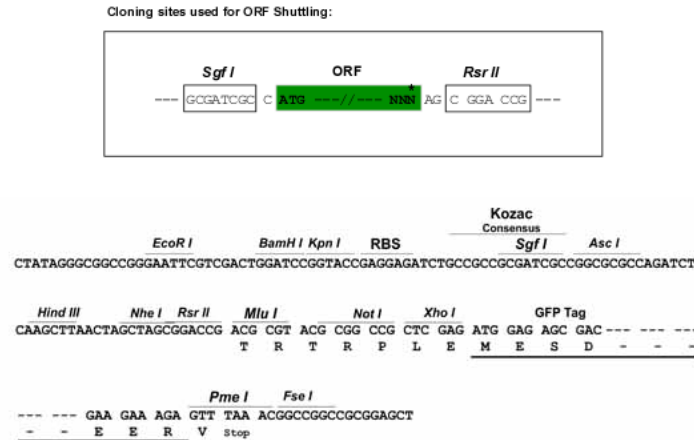
>RG202822 representing NM\_016224  
 Red=Cloning site Green=Tags(s)

MATKARVMYDFAAEPGNELTVNEGEIITITNPVGGWLEGRNIKGERGLVPTDYVEILPSDGKDQFSC  
 GNSVADQAFDLSASTAHASSAASNNHQVSGNDPWSAWSASKSGNWESEGWGAQPEGAGAQRNTNT  
 PNNWDTAFGHPQAYQGPATGDDDDWDEDWDGPKSSSYFKDSEADAGGAQRGNSRASSSSMKIPLNKFPG  
 FAKPGTEQYLLAKQLAKPKEKIPPIVGDYGPMMVYPTSTFDCVVADPRKGSKMYGLKSYIEYQLTPTNTN  
 RSVNHRYKHFDWLYERLLVKFGSAIPIPSLPDKQVTGRFEEEFIKMRMERLQAWMTRMCRHPVISESEVF  
 QQFLNFRDEKEWKTGKRKAERDELAVGMIFSTMEPEAPDLDLVEIEQKCEAVGKFTKAMDDGVKELLTVG  
 QEHWRCTGPLPKEYQKIGKALQSLATVFSSSGYQGETDLNDAITEAGKTYEEIASLVAEQPKKDLHFLM  
 ECNHEYKGLGCFPDIIGTHKGAIEKVESDKLVATSKITLQDKQNMVKRVSIMSYALQAEMNHFSNRI  
 YDYNVIRLYLEQQVQFYETIAEKLRLQALSRFPVM

SGP**TRRRLE** - GFP Tag - V

**Restriction Sites:**

Sgfl-RsrII

**Cloning Scheme:**


**ACCN:** NM\_016224

**ORF Size:** 1785 bp

**OTI Disclaimer:** The molecular sequence of this clone aligns with the gene accession number as a point of reference only. However, individual transcript sequences of the same gene can differ through naturally occurring variations (e.g. polymorphisms), each with its own valid existence. This clone is substantially in agreement with the reference, but a complete review of all prevailing variants is recommended prior to use. [More info](#)

**OTI Annotation:** This clone was engineered to express the complete ORF with an expression tag. Expression varies depending on the nature of the gene.

**Components:** The ORF clone is ion-exchange column purified and shipped in a 2D barcoded Matrix tube containing 10ug of transfection-ready, dried plasmid DNA (reconstitute with 100 ul of water).

**Reconstitution Method:**

1. Centrifuge at 5,000xg for 5min.
2. Carefully open the tube and add 100ul of sterile water to dissolve the DNA.
3. Close the tube and incubate for 10 minutes at room temperature.
4. Briefly vortex the tube and then do a quick spin (less than 5000xg) to concentrate the liquid at the bottom.
5. Store the suspended plasmid at -20°C. The DNA is stable for at least one year from date of shipping when stored at -20°C.

**RefSeq:** [NM\\_016224.3](#), [NP\\_057308.1](#)

**RefSeq Size:** 4200 bp

**RefSeq ORF:** 1788 bp

**Locus ID:** 51429

**UniProt ID:** [Q9Y5X1](#)

**Cytogenetics:** 6q25.3

**Domains:** SH3, PX

**Protein Families:** Druggable Genome

**Gene Summary:** This gene encodes a member of the sorting nexin family. Members of this family contain a phosphoinositide binding domain, and are involved in intracellular trafficking. The encoded protein does not contain a coiled coil region, like some family members, but does contain a SRC homology domain near its N-terminus. The encoded protein is reported to have a variety of interaction partners, including of adaptor protein 2 , dynamin, tyrosine kinase non-receptor 2, Wiskott-Aldrich syndrome-like, and ARP3 actin-related protein 3. The encoded protein is implicated in several stages of intracellular trafficking, including endocytosis, macropinocytosis, and F-actin nucleation. [provided by RefSeq, Jul 2013]

**Product images:**



Circular map for RG202822