

Product datasheet for **RG202785**

ZNF670 (NM_033213) Human Tagged ORF Clone

Product data:

Product Type:	Expression Plasmids
Product Name:	ZNF670 (NM_033213) Human Tagged ORF Clone
Tag:	TurboGFP
Symbol:	ZNF670
Mammalian Cell Selection:	Neomycin
Vector:	pCMV6-AC-GFP (PS100010)
E. coli Selection:	Ampicillin (100 ug/mL)
ORF Nucleotide Sequence:	>RG202785 representing NM_033213 Red=Cloning site Blue=ORF Green=Tags(s)

TTTTGTAATACGACTCACTATAGGGCGGCCGGAATTCGTCGACTGGATCCGGTACCGAGGAGATCTGCC
GCC**CGATCGCC**

ATGGATTCAGTGTCAATTTGAAGATGTGGCTGTGGCCTTTACTCAGGAGGAGTGGGCTTTGCTGGATCCTT
CTCAAAAGAATCTCTACAGAGATGTGATGCAAGAAATCTTCAGGAACCTGGCTTCTGTAGGAAACAAATC
AGAAGACCAGAATATCCAAGATGACTTCAAAAATCCTGGGAGAAATCTAAGCAGTCATGTGGTAGAGAGA
CTGTTTGAATTAAGAAGGCAGTCAATATGGAGAAACCTTCAGCCAGGATTCAAATTTGAATCTGAATA
AGAAAGTTTCTACTGGAGTAAAGCCATGGAATGCAGTGTGTGGGAAAAGTCTTCATATGTCATTCAGC
CCTTCATAGGCACATCCTGTCTCACATTGGAAACAACTATTTGAGTGTGAGGAATGTCCAGAGAAGTTA
TATCATTGCAACAATGTGGGAAAGCCTTTATCTCTCACCAAGTGTGACAGACACATGGTAACACACA
CTAGTAATGGGCCTTATAAGGGTCCAGTGTATGAGAAGCCTTTTGATTTTCTAGTGTATTTCAAATGCC
TCAGAGCACTTACACTGGAGAGAAAACATATAAATGTAACATTGTGATAAAGCCTTCAATTATTCAAGT
TATCTTCGTGAACATGAAAGAATCATACTGGAGAGAAACCTATGCATGTAAGAAATGTGGTAAATCAT
TCACTTTTCCAGTTCTCTTCGCCAACATGAAAGATCTCATACTGGAGAGAAACCTATGAATGTAAGGA
ATGTGGCAAAGCCTTCAGTCGTTCCACTTACTTGGGAATACATGAAAGAACGCATACTGGAGAAAAACCC
TATGAATGTATAAATGTGGCAAAGCCTTTAGATGTTCCAGAGTCTCAGAGTCCATGAAAGGACTCACA
GTGGAGAAAAGCCCTATGAATGTAACAATGTGGTAAAGCCTTCAAATATTCTAGTAACCTATGTGAGCA
TGAAAGAATCACAAGGACTGAAAGCCTTATGGATGTAAGGAATGTGGTAAAGTCTTTACTTCTCCAGT
GCCCTTCGAAGCCATGAAAGGACTCATACTGGAGAAAAACCCCTATGAATGTAAGAAATGTGGTAAAGCCT
TCAGTTGTTCCAGTTCCCTTCGAAAGCATGAAAGAGCTTATATGTGG

ACGCGTACGCGGCCGCTCGAG - GFP Tag - GTTTAA



[View online »](#)

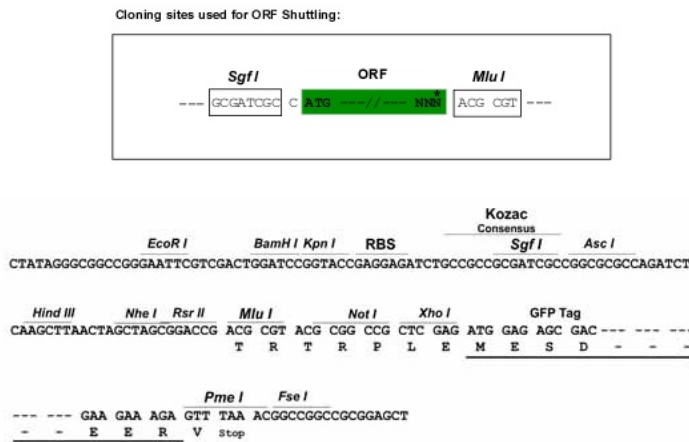
Protein Sequence: >RG202785 representing NM_033213
Red=Cloning site Green=Tags(s)

MDSVSFEDVAVAFTQEEWALLDPSQKNLYRDMQEIFRNLASVGNKSEDQNIQDDFKNPGRNLSSHVVER
 LFEIKEGSQYGETFSQDSNLLNKKVSTGVKPCESVCGKVFICHALHRHILSHIGNKLFEECEPEKL
 YHCKQCGKAFISLTSVDRHMVHTSNGPYKGPVYEKPFDFPSVFQMPQSTYTTEKTYKCKHCDKAFNYSS
 YLREHERHTHTGEKPYACKKCGKSFTFSSSLRQHERSHTGEKPYECKEKGKAFSRSTYLGIIHERHTHTGEK
 YECIKCGKAFRCRVLRVHERHTHSGEKPYECKQCGKAFKYSSNLCEHERHTHTGVKPYGCKEKGKSFSSS
 ALRSHERTHTGEKPYECKKCGKAFSCSSSLRKHERAYMW

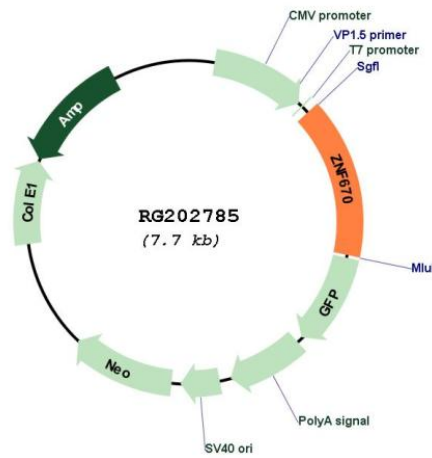
TRTRPLE - GFP Tag - V

Restriction Sites: SgfI-MluI

Cloning Scheme:



Plasmid Map:



ACCN: NM_033213

ORF Size:	1167 bp
OTI Disclaimer:	The molecular sequence of this clone aligns with the gene accession number as a point of reference only. However, individual transcript sequences of the same gene can differ through naturally occurring variations (e.g. polymorphisms), each with its own valid existence. This clone is substantially in agreement with the reference, but a complete review of all prevailing variants is recommended prior to use. More info
OTI Annotation:	This clone was engineered to express the complete ORF with an expression tag. Expression varies depending on the nature of the gene.
Components:	The ORF clone is ion-exchange column purified and shipped in a 2D barcoded Matrix tube containing 10ug of transfection-ready, dried plasmid DNA (reconstitute with 100 ul of water).
Reconstitution Method:	<ol style="list-style-type: none">1. Centrifuge at 5,000xg for 5min.2. Carefully open the tube and add 100ul of sterile water to dissolve the DNA.3. Close the tube and incubate for 10 minutes at room temperature.4. Briefly vortex the tube and then do a quick spin (less than 5000xg) to concentrate the liquid at the bottom.5. Store the suspended plasmid at -20°C. The DNA is stable for at least one year from date of shipping when stored at -20°C.
RefSeq:	NM_033213.5
RefSeq Size:	2005 bp
RefSeq ORF:	1170 bp
Locus ID:	93474
UniProt ID:	Q9BS34
Cytogenetics:	1q44
Protein Families:	Transcription Factors
Gene Summary:	May be involved in transcriptional regulation.[UniProtKB/Swiss-Prot Function]