

## Product datasheet for **RG202769**

### LXN (NM\_020169) Human Tagged ORF Clone

#### Product data:

Product Type:	Expression Plasmids
Product Name:	LXN (NM_020169) Human Tagged ORF Clone
Tag:	TurboGFP
Symbol:	LXN
Synonyms:	ECI; TCI
Mammalian Cell Selection:	Neomycin
Vector:	pCMV6-AC-GFP (PS100010)
E. coli Selection:	Ampicillin (100 ug/mL)
ORF Nucleotide Sequence:	>RG202769 representing NM_020169 Red=Cloning site Blue=ORF Green=Tags(s)

TTTTGTAATACGACTCACTATAGGGCGGCCGGAATTCGTCGACTGGATCCGGTACCGAGGAGATCTGCC  
GCC**CGATCGCC**

ATGGAAATCCCGCCGACCAACTACCCAGCCTCCAGGGCGGCCTTGGTGCCACAGAACTACATCAACTACC  
AGCAGGGGACCCCGCACAGGGTGTGGAGGTGCAGAAGGTCAAACAAGCCAGCATGGAGGATATCCAGG  
AAGAGGACATAAGTATCGCCTTAAATTTGCTGTTGAAGAAATTACAAAAACAAGTTAAGGTGAAGTGC  
ACAGCTGAAGTACTTTACCTTCAACGGGACAAGAACTGCACCAGAAGTCAACTTACATTTGAAGGAG  
AAACTGGAAGAATCCAGATGAAGAAGACAACACATTTTATCAAAGACTTAAGTCCATGAAGGAACCGCT  
AGAAGCACAAAATATCCAGACAATTTGGAAATGTATCTCCAGAAATGACGCTCGTTTACATTTAGCC  
TGGGTTGCCTGTGTTATATAATATGGCAAAATCTACTGAAGACACATGGTATAAAATGGTAAAAATTC  
AAACTGTCAAGCAAGTGCAAAGAAATGATGACTTTATTGAATTAGACTACACCATTTACTTTCATAATAT  
AGCATCTCAGGAGATTATCCCTGGCAAATGCAAGTTCTCTGGCATCCACAATACGGCACTAAAGTAAAA  
CATAATAGCCGTCTGCCAAAGGAAGTACAACTGGAA

**ACGCGT**ACGCGGGCCGCTCGAG - GFP Tag - GTTTAA



[View online »](#)

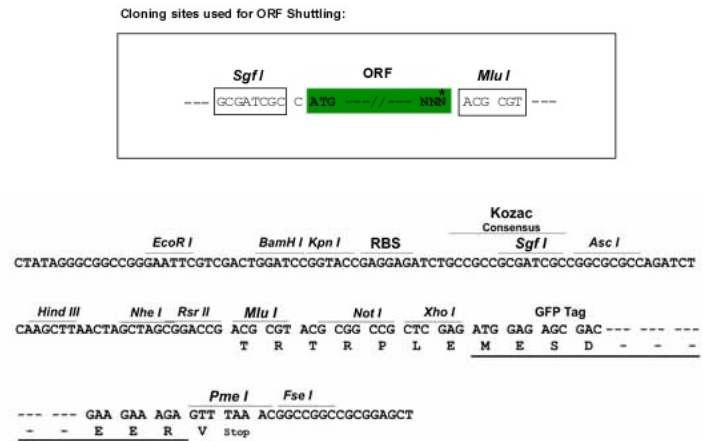
**Protein Sequence:** >RG202769 representing NM\_020169  
 Red=Cloning site Green=Tags(s)

MEIPPTNYPASRAALVAQNYINYQQGTPHRVFEVQKVKQASMEDIPGRGHKYRLKFAVEEIIQKQVKVNC  
 TAEVLYPSTGQETAPEVNFTEGETGKNPDEEDNTFYQRLKSMKEPLEAQNIPDNFGNVSPEMTLVLHLA  
 WVACGYIIWQNSTEDTWYKMKVIQTVKQVQRNDDFIELDYTILLHNIASQEIIPWQMQLVWHPQYGTQVK  
 HNSRLPKVEVQLE

TRTRPLE - GFP Tag - V

**Restriction Sites:** SgfI-MluI

**Cloning Scheme:**



**ACCN:** NM\_020169

**ORF Size:** 666 bp

**OTI Disclaimer:** The molecular sequence of this clone aligns with the gene accession number as a point of reference only. However, individual transcript sequences of the same gene can differ through naturally occurring variations (e.g. polymorphisms), each with its own valid existence. This clone is substantially in agreement with the reference, but a complete review of all prevailing variants is recommended prior to use. [More info](#)

**OTI Annotation:** This clone was engineered to express the complete ORF with an expression tag. Expression varies depending on the nature of the gene.

**Components:** The ORF clone is ion-exchange column purified and shipped in a 2D barcoded Matrix tube containing 10ug of transfection-ready, dried plasmid DNA (reconstitute with 100 ul of water).

**Reconstitution Method:**

1. Centrifuge at 5,000xg for 5min.
2. Carefully open the tube and add 100ul of sterile water to dissolve the DNA.
3. Close the tube and incubate for 10 minutes at room temperature.
4. Briefly vortex the tube and then do a quick spin (less than 5000xg) to concentrate the liquid at the bottom.
5. Store the suspended plasmid at -20°C. The DNA is stable for at least one year from date of shipping when stored at -20°C.

**RefSeq:** [NM\\_020169.2](#), [NP\\_064554.2](#)

**RefSeq Size:** 1144 bp

**RefSeq ORF:** 669 bp

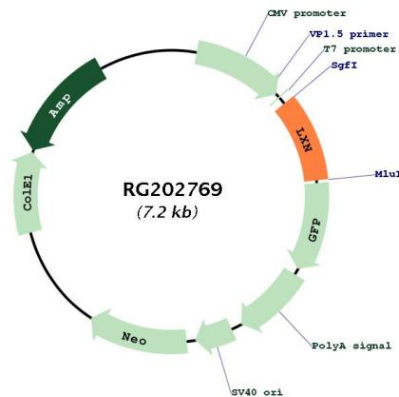
**Locus ID:** 56925

**UniProt ID:** [Q9BS40](#)

**Cytogenetics:** 3q25.32

**Gene Summary:** This gene encodes the only known protein inhibitor of zinc-dependent metalloproteinases. The encoded protein, latexin, downregulates the population size of hematopoietic stem cells. This protein is found to be downregulated in cancer cells because of promoter hypermethylation. [provided by RefSeq, Jul 2020]

## Product images:



Circular map for RG202769