

## Product datasheet for **RG202763**

### Surb7 (MED21) (NM\_004264) Human Tagged ORF Clone

#### Product data:

**Product Type:** Expression Plasmids  
**Product Name:** Surb7 (MED21) (NM\_004264) Human Tagged ORF Clone  
**Tag:** TurboGFP  
**Symbol:** Surb7  
**Synonyms:** hSrb7; SRB7; SURB7  
**Mammalian Cell Selection:** Neomycin  
**Vector:** pCMV6-AC-GFP (PS100010)  
**E. coli Selection:** Ampicillin (100 ug/mL)  
**ORF Nucleotide Sequence:** >RG202763 representing NM\_004264  
 Red=Cloning site Blue=ORF Green=Tags(s)

TTTTGTATACGACTCACTATAGGGCGGCCGGAATTCGTCGACTGGATCCGGTACCGAGGAGATCTGCC  
 GCC**CGATCGCC**

ATGGCGGATCGGCTCACGCAGCTTCAGGACGCTGTGAATTCGCTTGAGATCAGTTTTGTAATGCCATTG  
 GAGTATTGCAGCAATGTGGTCTCTGCCTCTTCAATAATTCAGACAGCAATTAACAAAGACCAGCC  
 AGCTAACCTACAGAAGAGTATGCCAGCTTTTGCAGCACTGATTGCAGAACAGCAAAAGACATTGAT  
 GTTTTGATAGATTCCTTACCCAGTGAAGAATCTACAGCTGCTTTACAGGCTGCTAGCTTGATAAGCTAG  
 AAGAAGAAAACCATGAAGCTGCTACATGTCTGGAGGATGTTGTTTATCGAGGAGACATGCTTCTGGAGAA  
 GATACAAAGCGCACTTGCTGATATTGCACAGTCACAGCTGAAGACAAGAAGTGGTACCCATAGCCAGTCT  
 CTTCAGACTCA

ACGCGTACGCGGCCGCTCGAG - GFP Tag - GTTTAA

**Protein Sequence:** >RG202763 representing NM\_004264  
 Red=Cloning site Green=Tags(s)  
 MADRLTQLQDAVNSLADQFCNAIGVLQCGPPASFNNIQTAINKDQPANPTEEYAQLFAALIARTAKDID  
 VLIDSLPSEESTAALQAASLYKLEENHEAATCLEDEVVYRGDMLLEKIQSALADIAQSQLKTRSGTHSQS  
 LPDS

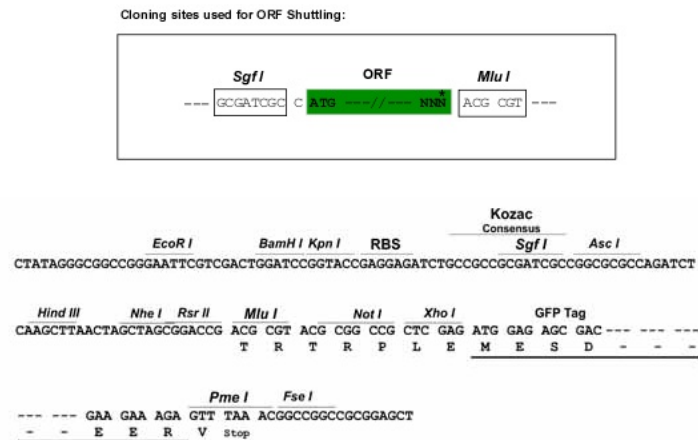
TRTRPLE - GFP Tag - V

**Restriction Sites:** SgfI-MluI



[View online »](#)

## Cloning Scheme:



ACCN: NM\_004264

ORF Size: 432 bp

OTI Disclaimer: The molecular sequence of this clone aligns with the gene accession number as a point of reference only. However, individual transcript sequences of the same gene can differ through naturally occurring variations (e.g. polymorphisms), each with its own valid existence. This clone is substantially in agreement with the reference, but a complete review of all prevailing variants is recommended prior to use. [More info](#)

OTI Annotation: This clone was engineered to express the complete ORF with an expression tag. Expression varies depending on the nature of the gene.

Components: The ORF clone is ion-exchange column purified and shipped in a 2D barcoded Matrix tube containing 10ug of transfection-ready, dried plasmid DNA (reconstitute with 100 ul of water).

Reconstitution Method:

1. Centrifuge at 5,000xg for 5min.
2. Carefully open the tube and add 100ul of sterile water to dissolve the DNA.
3. Close the tube and incubate for 10 minutes at room temperature.
4. Briefly vortex the tube and then do a quick spin (less than 5000xg) to concentrate the liquid at the bottom.
5. Store the suspended plasmid at -20°C. The DNA is stable for at least one year from date of shipping when stored at -20°C.

Note: Plasmids are not sterile. For experiments where strict sterility is required, filtration with 0.22um filter is required.

RefSeq: [NM\\_004264.5](#)

RefSeq Size: 1783 bp

RefSeq ORF: 435 bp

|                   |  |
|-------------------|--|
| Locus ID:         | 9412   |
| UniProt ID:       | <a href="#">Q13503</a>   |
| Cytogenetics:     | 12p11.23   |
| Protein Families: | Transcription Factors  |
| Gene Summary:     | This gene encodes a member of the mediator complex subunit 21 family. The encoded protein interacts with the human RNA polymerase II holoenzyme and is involved in transcriptional regulation of RNA polymerase II transcribed genes. A pseudogene of this gene is located on chromosome 8. Alternative splicing results in multiple transcript variants. [provided by RefSeq, Nov 2012] |

## Product images:



Circular map for RG202763