

## Product datasheet for **RG202735**

### PAIP1 (NM\_182789) Human Tagged ORF Clone

#### Product data:

Product Type:	Expression Plasmids
Product Name:	PAIP1 (NM_182789) Human Tagged ORF Clone
Tag:	TurboGFP
Symbol:	PAIP1
Mammalian Cell Selection:	Neomycin
Vector:	pCMV6-AC-GFP (PS100010)
E. coli Selection:	Ampicillin (100 ug/mL)
ORF Nucleotide Sequence:	>RG202735 representing NM_182789 Red=Cloning site Blue=ORF Green=Tags(s)

TTTTGTAATACGACTCACTATAGGGCGGCCGGAATTCGTCGACTGGATCCGGTACCGAGGAGATCTGCC  
GCC**CGATCGCC**

ATGTCGGACGGTTTCGATCGGGCCCCAGAGCAAACGAGGCCCTGAGAGCTCCACCTAGTTCACAGGATA  
AAATCCCACAGCAGAACTCGGAGTCAGCAATGGCTAAGCCCCAGGTGGTTGTAGCTCCTGTATTAATGTC  
TAAGCTGTCTGTGAATGCCCTGAATTTACCCCTCAGGTTATTCTTCCAGTTACACAGAATCCTATGAG  
GATGGTTGTGAGGATTATCCTACTCTATCAGAATATGTTCAAGATTTTTGAATCATCTTACAGAGCAGC  
CTGGCAGTTTTGAACTGAAATGAACAGTTTGCAGAGACCCTGAATGGTTGTGTTACAACAGATGATGC  
TTTGCAAGAACTTGTGAACTCATCTATCAACAGGCCACATCTATCCCAAATTTCTTTATATGGGAGCT  
CGCCTGTGTAATTACCTGTCCCATCATCTGACAATTAGCCACAGAGTGGCAACTCCGCAATTGCTAC  
TTCAAAGATGTCGGACTGAATATGAAGTTAAAGATCAAGCTGCAAAAGGGGATGAAGTTACTCGAAAACG  
ATTTTCATGCATTTGACTCTTTCTGGGAGAACTTTATCTTAACCTGGAGATCAAGGGAACAAATGGACAG  
GTTACAAGAGCAGATATTCTTCAGGTTGGTCTTCGAGAATTGCTGAATGCCCTGTTTTCTAATCCTATGG  
ATGACAATTTAATTTGTGCAGTAAAATGTTAAAGTTGACAGGATCAGTTTTGGAAGATGCTTGGAAAGGA  
AAAAGGAAAGATGGATATGGAAGAAATTTTCAAGAGAAATGAAAACGTTGCTTAGATGCAAACTGCAGT  
AGAGATGTAACAGATGCTCTTGAAGCTTGTAGAATCCGGTCAAGTAAGTGGGCGAGATCCATGCAA  
CTTCAACATATAGAGAAGCAACACCAGAAAATGATCCTAACTACTTTATGAATGAACCAACATTTTATAC  
ATCTGATGGTGTCTTTCACTGACGCTGATCCAGATTACCAAGAGAAATACCAAGAATTTACTTGAAGA  
GAGGACTTTTTTCCAGATTATGAAGAAAATGGAACAGATTTATCCGGGGCTGGTATCCATACTTGGATG  
ATATTGATGATGAGATGGACCCAGAGATAGAAGAAGCTTATGAAAAGTTTTGTTTGGAAATCAGAGCGTAA  
GCGAAAACAG

**ACGCGT**ACGCGGCCGCTCGAG - GFP Tag - GTTTAA



[View online »](#)

**Protein Sequence:** >RG202735 representing NM\_182789  
Red=Cloning site Green=Tags(s)

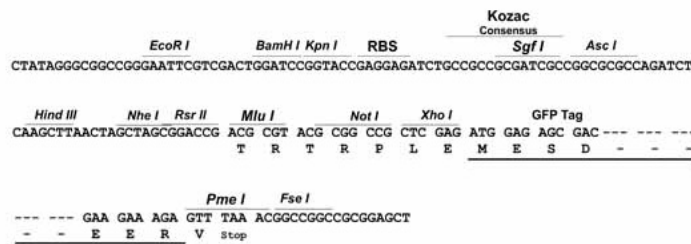
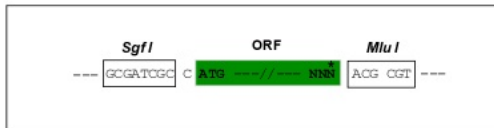
MSDGFDRAPEQTRPLRAPPSSQDKIPQQNSESAMAKPQVVVAPVLMKLSVNAPEFYPSGYSSSYTESYE  
 DGCEDYPTLSEYVQDFLNHLTEQPGSFETEIEQFAETLNGCVTTDDALQELVELIYQQATSIPNFSYMG  
 RLCNYLSHHLTISPQSGNFRQLLLQRCRTEYEVKDQAAGDEVTRKRFHAFVFLGELYLNLEIKGTNGQ  
 VTRADILQVGLRELLNALFSNPMDNLCIAVKLLKLTGSVLEDAWKEKGMDEEIIQRIENVVLDANCS  
 RDVKQMLLKLVELRSSNWGRVHATSTYREATPENDPNYFMNEPTFYTSDGVPFTAADPDYQEKYQELLER  
 EDFFPDYEENGTDLSGAGDPYLDIDDEMPEIEEAYEKFCLESERKRKQ

TRTRPLE - GFP Tag - V

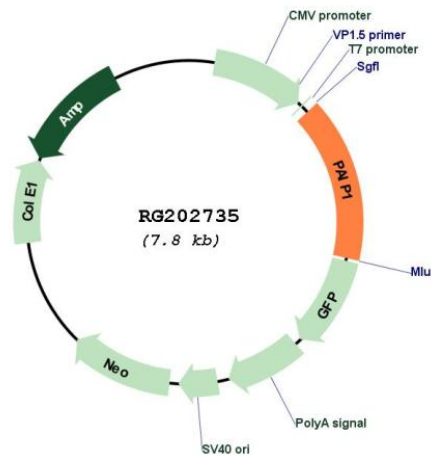
**Restriction Sites:** SgfI-MluI

**Cloning Scheme:**

Cloning sites used for ORF Shuttling:



**Plasmid Map:**



**ACCN:** NM\_182789

<b>ORF Size:</b>	1200 bp
<b>OTI Disclaimer:</b>	The molecular sequence of this clone aligns with the gene accession number as a point of reference only. However, individual transcript sequences of the same gene can differ through naturally occurring variations (e.g. polymorphisms), each with its own valid existence. This clone is substantially in agreement with the reference, but a complete review of all prevailing variants is recommended prior to use. <a href="#">More info</a>
<b>OTI Annotation:</b>	This clone was engineered to express the complete ORF with an expression tag. Expression varies depending on the nature of the gene.
<b>Components:</b>	The ORF clone is ion-exchange column purified and shipped in a 2D barcoded Matrix tube containing 10ug of transfection-ready, dried plasmid DNA (reconstitute with 100 ul of water).
<b>Reconstitution Method:</b>	<ol style="list-style-type: none"><li>1. Centrifuge at 5,000xg for 5min.</li><li>2. Carefully open the tube and add 100ul of sterile water to dissolve the DNA.</li><li>3. Close the tube and incubate for 10 minutes at room temperature.</li><li>4. Briefly vortex the tube and then do a quick spin (less than 5000xg) to concentrate the liquid at the bottom.</li><li>5. Store the suspended plasmid at -20°C. The DNA is stable for at least one year from date of shipping when stored at -20°C.</li></ol>
<b>RefSeq:</b>	<a href="#">NM_182789.3</a>
<b>RefSeq Size:</b>	2570 bp
<b>RefSeq ORF:</b>	1203 bp
<b>Locus ID:</b>	10605
<b>UniProt ID:</b>	<a href="#">Q9H074</a>
<b>Cytogenetics:</b>	5p12
<b>Gene Summary:</b>	The protein encoded by this gene interacts with poly(A)-binding protein and with the cap-binding complex eIF4A. It is involved in translational initiation and protein biosynthesis. Overexpression of this gene in COS7 cells stimulates translation. Alternative splicing occurs at this locus and three transcript variants encoding three distinct isoforms have been identified. [provided by RefSeq, Jul 2008]