

Product datasheet for **RG202690**

HAX1 (NM_006118) Human Tagged ORF Clone

Product data:

Product Type:	Expression Plasmids
Product Name:	HAX1 (NM_006118) Human Tagged ORF Clone
Tag:	TurboGFP
Symbol:	HAX1
Synonyms:	HCLSBP1; HS1BP1; SCN3
Mammalian Cell Selection:	Neomycin
Vector:	pCMV6-AC-GFP (PS100010)
E. coli Selection:	Ampicillin (100 ug/mL)
ORF Nucleotide Sequence:	>RG202690 representing NM_006118 Red=Cloning site Blue=ORF Green=Tags(s)

TTTTGTAATACGACTCACTATAGGGCGGCCGGAATTCGTCGACTGGATCCGGTACCGAGGAGATCTGCC
GCC**CGATCGCC**

ATGAGCCTCTTTGATCTCTTCCGGGGCTTTTTCGGCTTTCCTGGACCTCGGAGCCACAGAGATCCCTTTT
TTGGAGGGATGACTCGAGATGAAGATGATGATGAGGAAGAAGAAGAAGAGGGGGCTCATGGGGCCGTGG
GAACCCAAGGTTCCATAGCCCTCAGCACCCCTGAGGAATTTGGCTTCGGCTTCAGCTTCAGCCCAGGA
GGAGGGATACGTTTCCACGATAACTTCGGCTTTGATGACCTAGTACGAGATTTCAATAGCATCTTCAGCG
ATATGGGGGCTGGACCTTGCCATCCCATCCTCCTGAACCTCCAGTCCGAGTCCAGTCCAGAGACACCTGGTGA
GAGACTACGGGAGGGACAGACACTTCGGGACTCAATGCTTAAGTATCCAGATAGTACCAGCCCAGGATC
TTTGGGGGGTCTTGAGAGTGATGCAAGAAGTGAATCCCCCAACCAGCACCAGACTGGGGCTCCCAGA
GGCCATTTCATAGTTTGTATGATGATGGCCTATGGACCCCATCCTAGAACAGAGAGGACAATGATCT
TGATTTCCAGGTTTCCAGGAGGGTCTTGGCCCGTCTACAGCCCAGCCAAATCCTATTTCAAGAGC
ATCTCTGTACCAAGATCACTAAACCAGATGGGATAGTGGAGGAGCGCCGGACTGTGGTGGACAGTGAGG
GCCGGACAGACTACAGTAACCCGACACGAAGCAGATAGCAGTCCAGGGGTGATCCAGAATCACCAAG
ACCTCCAGCCCTGGATGATGCCTTTTCCATCCTGGACTTATTCTGGGACGTTGGTTCGGTCCCGG

ACGCGTACGCGGCCGCTCGAG - GFP Tag - GTTTAA



[View online »](#)

Protein Sequence: >RG202690 representing NM_006118
 Red=Cloning site Green=Tags(s)

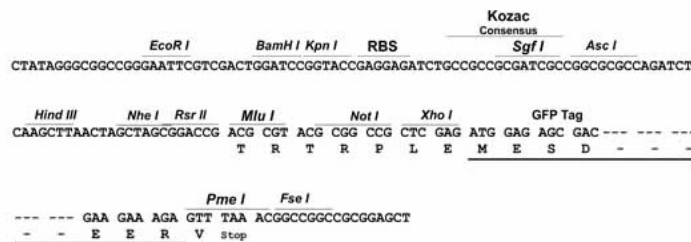
```
MSLFDLFRGFFGFPGPRSHRDPFFGGMTRDEDDDEEEEEEGGSWGRGNPRFHSPQHPPPEFGFGFSFSPG
GGIRFHDNFGFDDLVRDFNSIFSDMGAWLPSHPPPELPGPESETPGERLREGQTLRDSMLKYPDSHQPRI
FGGVLESDARSESPQPAPDWGSQRPFFHRFDDVWPMDPHPRTREDNDLDSQVSQEGLGPVLQFPKSYFKS
ISVTKITKPDGIVEERRTVVDSEGRTEITVTRHEADSSPRGDPEsprppalDDAFSILDLFLLGRWFRSR
```

TRTRPLE - GFP Tag - V

Restriction Sites: SgfI-MluI

Cloning Scheme:

Cloning sites used for ORF Shutting:



ACCN: NM_006118

ORF Size: 837 bp

OTI Disclaimer: The molecular sequence of this clone aligns with the gene accession number as a point of reference only. However, individual transcript sequences of the same gene can differ through naturally occurring variations (e.g. polymorphisms), each with its own valid existence. This clone is substantially in agreement with the reference, but a complete review of all prevailing variants is recommended prior to use. [More info](#)

OTI Annotation: This clone was engineered to express the complete ORF with an expression tag. Expression varies depending on the nature of the gene.

Components: The ORF clone is ion-exchange column purified and shipped in a 2D barcoded Matrix tube containing 10ug of transfection-ready, dried plasmid DNA (reconstitute with 100 ul of water).

Reconstitution Method:

1. Centrifuge at 5,000xg for 5min.
2. Carefully open the tube and add 100ul of sterile water to dissolve the DNA.
3. Close the tube and incubate for 10 minutes at room temperature.
4. Briefly vortex the tube and then do a quick spin (less than 5000xg) to concentrate the liquid at the bottom.
5. Store the suspended plasmid at -20°C. The DNA is stable for at least one year from date of shipping when stored at -20°C.

RefSeq: [NM_006118.3](#), [NP_006109.2](#)

RefSeq Size: 1196 bp

RefSeq ORF: 840 bp

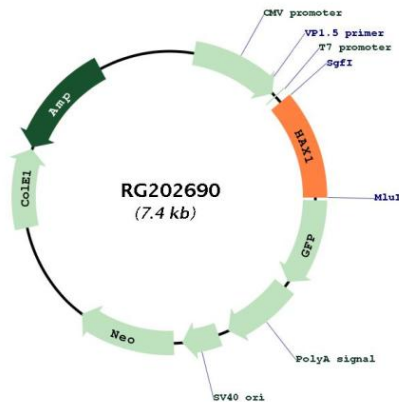
Locus ID: 10456

UniProt ID: [O00165](#)

Cytogenetics: 1q21.3

Gene Summary: The protein encoded by this gene is known to associate with hematopoietic cell-specific Lyn substrate 1, a substrate of Src family tyrosine kinases. It also interacts with the product of the polycystic kidney disease 2 gene, mutations in which are associated with autosomal-dominant polycystic kidney disease, and with the F-actin-binding protein, cortactin. It was earlier thought that this gene product is mainly localized in the mitochondria, however, recent studies indicate it to be localized in the cell body. Mutations in this gene result in autosomal recessive severe congenital neutropenia, also known as Kostmann disease. Two transcript variants encoding different isoforms have been found for this gene. [provided by RefSeq, Jul 2008]

Product images:



Circular map for RG202690