

Product datasheet for **RG202672**

METTL2A (NM_001005372) Human Tagged ORF Clone

Product data:

Product Type:	Expression Plasmids
Product Name:	METTL2A (NM_001005372) Human Tagged ORF Clone
Tag:	TurboGFP
Symbol:	METTL2A
Synonyms:	FLJ12760; methyltransferase like 2A; METTL2; METTL2, FLJ12760
Mammalian Cell Selection:	Neomycin
Vector:	pCMV6-AC-GFP (PS100010)
E. coli Selection:	Ampicillin (100 ug/mL)
ORF Nucleotide Sequence:	>RG202672 representing NM_001005372 Red=Cloning site Blue=ORF Green=Tags(s)

TTTTGTAATACGACTCACTATAGGGCGCCGGGAATTCGTCGACTGGATCCGGTACCGAGGAGATCTGCC
GCC**CGATCGCC**

ATGGAAGAACAGCACAAGTGTTCTTCGAAGAGCCTTGAACATAAAACACAGACACCTCCTGTGGAGGAGA
ATGTAACACAGAAAATTAGTGACCTGGAAATTTGTGCTGATGAGTTTCCTGGATCCTCAGCCACCTACCG
AATACTGGAGGTTGGCTGTGGTGTGGGAAACACAGTCTTTCCAATTTACAAACGAACAATGACCCAGGA
CTCTTTGTTTATTGCTGTGATTTTTCTCCACAGCTATAGAAGTCCAGACAAATTCAGAATATGATC
CTTCTCGGTGTTTGCCTTTGTTTCAGACCTGTGTGATGAAGAGAAGAGTTACCCAGTGCCCAAGGGCAG
TCTTGATATTATCATTCTCATATTTGTTCTTTACGAATTGTTCCAGACAAGATGCAGAAGGCTATCAAC
AGGCTGAGCAGGCTTCTGAAACCTGGCGGGATGATGCTTCTGCGAGATTACGGCCGCTATGACATGGCTC
AGCTTCGGTTTAAAAAAGGTCAGTGTCTATCTGGAAATTTCTACGTGAGAGGTGATGGAACCAGAGTTTA
CTTCTTACACAAGGAACTGGACACGCTTTTACCAGTGTGGACTGGAAAAAGTTTCAGAACCTGGTG
GATCGCCGACTGCAGGTGAACCGAGGAAAGCAACTGACAATGTACCGGTTTGGATTCAAGTCAAATACT
GCAAGCCCCTTCTGTCCAGCACCAGC

ACGCGTACGCGGCCGCTCGAG - GFP Tag - GTTTAA



[View online »](#)

Protein Sequence: >RG202672 representing NM_001005372
 Red=Cloning site Green=Tags(s)

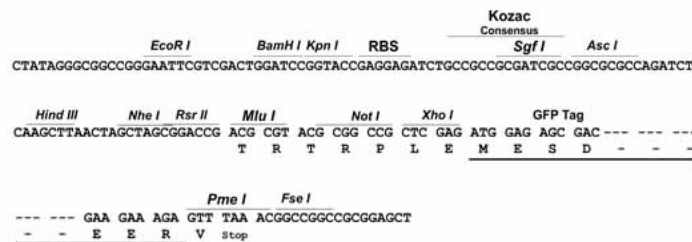
MEEQHKCSSKSLEHKTQTPPVEENVNTQKISDLEICAEDEFPGSSATYRILEVCGVGNTVFPILQTNNDPG
 LFVYCCDFSSTAIELVQTNSEYDPSRCFAFVHDLCDDEKSYPVPGSLDIIILIFVLSAIVPDKMQKAIN
 RLSRLLKPGGMMLLRDYGRYDMAQLRFKKGQCLSGNFYVRGDGTRVYFFTQEELDTLFTTAGLEKVNQLV
 DRRLQVNRGKQLTMYRVWIQCKYCKPLLSSTS

TRTRPLE - GFP Tag - V

Restriction Sites: SgfI-MluI

Cloning Scheme:

Cloning sites used for ORF Shutting:



ACCN: NM_001005372

ORF Size: 726 bp

OTI Disclaimer: The molecular sequence of this clone aligns with the gene accession number as a point of reference only. However, individual transcript sequences of the same gene can differ through naturally occurring variations (e.g. polymorphisms), each with its own valid existence. This clone is substantially in agreement with the reference, but a complete review of all prevailing variants is recommended prior to use. [More info](#)

OTI Annotation: This clone was engineered to express the complete ORF with an expression tag. Expression varies depending on the nature of the gene.

Components: The ORF clone is ion-exchange column purified and shipped in a 2D barcoded Matrix tube containing 10ug of transfection-ready, dried plasmid DNA (reconstitute with 100 ul of water).

Reconstitution Method:

1. Centrifuge at 5,000xg for 5min.
2. Carefully open the tube and add 100ul of sterile water to dissolve the DNA.
3. Close the tube and incubate for 10 minutes at room temperature.
4. Briefly vortex the tube and then do a quick spin (less than 5000xg) to concentrate the liquid at the bottom.
5. Store the suspended plasmid at -20°C. The DNA is stable for at least one year from date of shipping when stored at -20°C.

RefSeq: [NM_001005372.1](#), [NP_001005372.1](#)

RefSeq Size: 2705 bp

RefSeq ORF: 728 bp

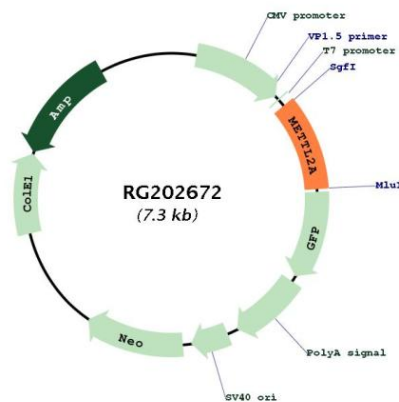
Locus ID: 339175

Cytogenetics: 17q23.2

Protein Families: Druggable Genome

Gene Summary: Probable S-adenosyl-L-methionine-dependent methyltransferase that mediates 3-methylcytidine modification of some tRNAs.[UniProtKB/Swiss-Prot Function]

Product images:



Circular map for RG202672