

## Product datasheet for **RG202651**

### **CNOT10 (NM\_015442) Human Tagged ORF Clone**

#### **Product data:**

Product Type:	Expression Plasmids
Product Name:	CNOT10 (NM_015442) Human Tagged ORF Clone
Tag:	TurboGFP
Symbol:	CNOT10
Mammalian Cell Selection:	Neomycin
Vector:	pCMV6-AC-GFP (PS100010)
E. coli Selection:	Ampicillin (100 ug/mL)



[View online »](#)

ORF Nucleotide  
Sequence:

>RG202651 representing NM\_015442  
Red=Cloning site Blue=ORF Green=Tags(s)

TTTTGTAATACGACTCACTATAGGGCGGCCGGAATTCGTCGACTGGATCCGGTACCGAGGAGATCTGCC  
GCCGCGATCGCC

ATGGCTGCAGACAAGCCTGCAGATCAGGGAGCAGAGAAACATGAAGGCACAGGTCAGTCCTCTGGGATCA  
CTGATCAAGAGAAGGAGTTATCCACCAATGCTTTCCAAGCTTTCACATCTGGAAATTATGATGCCTGTCT  
ACAACACCTTGCCTGTCTACAAGATATAAACAAAGATGATTATAAAATAATTTTGAATACAGCAGTAGCT  
GAGTTTTTTAAAAGTAACCAACAACAACAGATAATTTGAGACAAACACTTAACCAGCTGAAGAATCAGG  
TCCACTCAGCTGTTGAAGAAATGGATGGATTAGATGATGTTGAAAACAGCATGTTGTAATAATCAAGC  
AGTCATTCTTTATCATCTGCGGCAGTATACAGAAGCCATATCAGTTGGTAAAAACTTTATCAGTTCATA  
GAGCCTTTTGAAGAAAAATTTGCCAAGCAGTGTGTTTTTGGCTGTAGACCTGTATATTAACCTACC  
AAGCTGAGAAAGCTTTGCATCTTCTGCTCCTAGAAAAATGATTTTCACAGGTAACAATAACAAAA  
TGGAAAGAATGAGACTGGTAATAACAACAACAAGATGGATCTAATCATAAAGCTGAAAGTGGAGCTCTA  
ATAGAAGCTGCAAAATCAAAGATACATCAGTACAAAGTACGAGCTTATATCCAAATGAAGCTCTGAAAG  
CATGTAAGGAAATCAAGTCAGTCATGAATACAGCTGGAAATCCGCACCCTCTCTTTTCTTAAAAG  
CAATTTTGAAGTACTTAAGAGTAATTATCGAAAAGCCGTGAAGCTATTAATAGTTCAAACATTGCTGAG  
CATCCAGGATTCATGAAAACAGGTGAATGCTTGAGATGCATGTTCTGGAATAACCTTGGTTGCATCCATT  
TTGCCATGAGCAAGCACAATTTGGGAATATTCTACTTTAAAAGGCTCTGCAAGAGAATGACAATGTCTG  
TGCACAGCTCAGTGCAGGTAGCACTGATCCAGGTAATAACTGTGGAATTCAGCTTCTTACATTGGAAGCCTCTTGCTG  
CCTTCGAATGCTGATTGAAGCTGTTGAGTTTATCATGCAAACTCCTCGCCTCTGGCTACGGCTGGCTGA  
ATGCTGCATTGCTGCAATAAAGGGGACTTCTGAACAAGAACTAAAGGCCTTCCCAGCAAAAAAGGAATT  
GTACAGTCTATTGTTGGTCAAGGCTATCATCGTAAAATAGTTTTTGGCATCACAGTCTATACAGAATACTG  
TTTATAATGATGGTCAGTCTTCGGCCATTCTGTAGCCAGTATGGAGTTTGCAGCCATATGTCTCAGAAA  
TGCCTTGTGCTGCTACCTGAAGAACAGCAAGATCCAAAGCAGGAAAAATGGGGCTAAAAATAGTAATCAA  
TTAGGTGGGAACACAGAGAGCAGCGAAAGCAGTGAACCTTGCAGCAGTAAAAGCCATGATGGAGATAAAT  
TCATTCCAGCTCCACCTTCTTCCATTGAGAAAAAGGAATTAGAAAACCTAAAGTGTCCATACTTGC  
TTGCAGTGCTACGTGGCTCTGGCTTTGGGTGATAACCTCATGGCTTTGAATCATGCAGATAAACTTCTT  
CAGCAGCCAAGCTGTCAGGATCTTTAAGTTTTTGGGACATTTATATGCTGCAGAAGCCCTCATCTCTC  
TCGACAGAATATCTGATGCCATTACTCACTTGAACCCGGAGAATGCACTGATGTCTCCTTAGGGATCTC  
TTCAAATGAGCAGGACCAAGGATCAGACAAGGTGAAAATGAAGCAATGGAATCCTCTGGTAAGCGGGCC  
CCTCAGTGCTACCCAGTTCCTGCAACTCTGCCAGGACTGTGATGCTGTTCAACCTTGGCAGCGCTTACT  
GCCTGAGGAGCGAATATGACAAAGCCCGAAAGTGTCTCCACCAGGCGGCTTCAATGATCCATCCTAAGA  
GGTGCCCCCTGAGGCCATCTTGTGGCAGTCTACCTTGAAGTGCAGAATGGTAATACTCAGCTGGCCTTA  
CAGATCATAAAAGGAATCAGCTGCTCCCTGCAGTGAAAACACACTCTGAAGTGAAGAAAGCCAGTGT  
TTCAGCCTGTCCACCCGATCCAGCCATCCAAATGCCGGCTTTCACCACTGTGCAGAGAAAAG

ACGCGTACGCGGCCGCTCGAG – GFP Tag – GTTTAA

**Protein Sequence:** >RG202651 representing NM\_015442  
 Red=Cloning site Green=Tags(s)

```

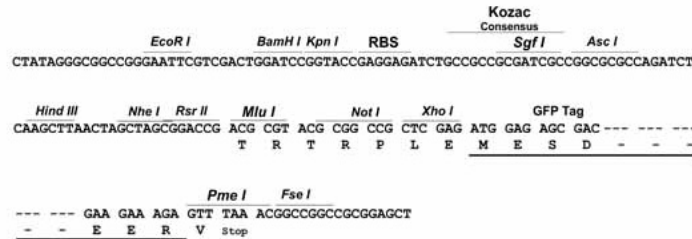
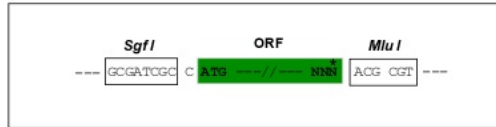
MAADKPADQGAEKHEGTGQSSGITDQEKELSTNAFQAFTSGNYDAQLHLACLQDINKDDYKIIILNTAVA
EFFKSNQTTTNDLRQTLNQLKNQVHSAVEEMDGLDDVENSMLYYNQAVILYHLRQYTEAISVGEKLYQFI
EPFEEKFAQAVCFLLVDLYILTYQAEKALHLLAVLEKMI SQGNNNKNGKNETGNNNKDGSNHKAESGAL
IEAAKSKIHQYKVRAYIQMKSLKACKREIKSVMTAGNSAPSLFLKSNFEYLRGNYRKAVKLLNSSNIAE
HPGFMTGECLRCMFWNNGLCIHFAMSKHNLGIFYFKKALQENDNVCAQLSAGSTDPGKKFSGRPMCTLL
TNKRYELLYNCGIQLLHIGRPLAAFECLIEAVQVYHANPRLWLRLECCIAANKGTSEQETKGLPSKKGI
VQSI VGGQYHRKIVLASQSIQNTVYNDGQSSAIPVAMEFAAICLRNALLLLPEEQDQPKQENGAKNSNQ
LGGNTESSESSETCSSKSHDGDKFI PAPPSSPLRKQELNLCISLACSAYVALALGDNLMALNHADKLL
QQPKLSGSLKFLGHL YAAEALISLDRISDAITHLNPENVTDVSLGISSNEQDQGS DKGENEAMESSGKRA
PQCY PSSVNSARTVMLFNLGSAYCLRSEYDKARKCLHQAASMIHPKEVPPEAILLAVYLELQNGNTQLAL
QIIKRNQLLPAVKTHSEVRKKPVFQPVHPIQPIQMPAFTTVQRK
  
```

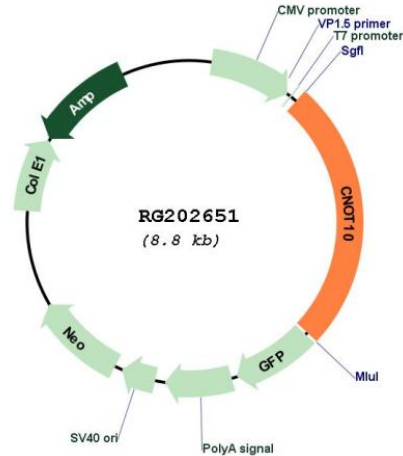
TRTRPLE - GFP Tag - V

**Restriction Sites:** SgfI-MluI

**Cloning Scheme:**

Cloning sites used for ORF Shutting:



**Plasmid Map:**


**ACCN:** NM\_015442

**ORF Size:** 2232 bp

**OTI Disclaimer:** Due to the inherent nature of this plasmid, standard methods to replicate additional amounts of DNA in *E. coli* are highly likely to result in mutations and/or rearrangements. Therefore, OriGene does not guarantee the capability to replicate this plasmid DNA. Additional amounts of DNA can be purchased from OriGene with batch-specific, full-sequence verification at a reduced cost. Please contact our customer care team at [custsupport@origene.com](mailto:custsupport@origene.com) or by calling 301.340.3188 option 3 for pricing and delivery.

The molecular sequence of this clone aligns with the gene accession number as a point of reference only. However, individual transcript sequences of the same gene can differ through naturally occurring variations (e.g. polymorphisms), each with its own valid existence. This clone is substantially in agreement with the reference, but a complete review of all prevailing variants is recommended prior to use. [More info](#)

**OTI Annotation:** This clone was engineered to express the complete ORF with an expression tag. Expression varies depending on the nature of the gene.

**Components:** The ORF clone is ion-exchange column purified and shipped in a 2D barcoded Matrix tube containing 10ug of transfection-ready, dried plasmid DNA (reconstitute with 100 ul of water).

**Reconstitution Method:**

1. Centrifuge at 5,000xg for 5min.
2. Carefully open the tube and add 100ul of sterile water to dissolve the DNA.
3. Close the tube and incubate for 10 minutes at room temperature.
4. Briefly vortex the tube and then do a quick spin (less than 5000xg) to concentrate the liquid at the bottom.
5. Store the suspended plasmid at -20°C. The DNA is stable for at least one year from date of shipping when stored at -20°C.

**RefSeq:** [NM\\_015442.1](#), [NP\\_056257.1](#)

**RefSeq Size:** 2741 bp

**RefSeq ORF:** 2235 bp

**Locus ID:** 25904

**UniProt ID:** [Q9H9A5](#)

**Cytogenetics:** 3p22.3

**Domains:** TPR

**Protein Pathways:** RNA degradation

**Gene Summary:** Component of the CCR4-NOT complex which is one of the major cellular mRNA deadenylases and is linked to various cellular processes including bulk mRNA degradation, miRNA-mediated repression, translational repression during translational initiation and general transcription regulation. Additional complex functions may be a consequence of its influence on mRNA expression. Is not required for association of CNOT7 to the CCR4-NOT complex.  
[UniProtKB/Swiss-Prot Function]