

## Product datasheet for **RG202636**

### CENPO (NM\_024322) Human Tagged ORF Clone

#### Product data:

**Product Type:** Expression Plasmids  
**Product Name:** CENPO (NM\_024322) Human Tagged ORF Clone  
**Tag:** TurboGFP  
**Symbol:** CENPO  
**Synonyms:** CENP-O; ICEN-36; MCM21R  
**Mammalian Cell Selection:** Neomycin  
**Vector:** pCMV6-AC-GFP (PS100010)  
**E. coli Selection:** Ampicillin (100 ug/mL)  
**ORF Nucleotide Sequence:** >RG202636 representing NM\_024322  
Red=Cloning site Blue=ORF Green=Tags(s)

TTTTGTAATACGACTCACTATAGGGCGGCCGGAATTCGTCGACTGGATCCGGTACCGAGGAGATCTGCC  
GCC**CGATCGCC**

ATGGAGCAGGCGAACCCCTTACGTCCAGATGGCGAGTCCAAGGAGGTGTTTTAGCTCACTTGGAAAGGC  
TAGAGACCCAAGTGAGCAGATCCCGTAAACAGTCTGAAGAGCTGCAGAGCGTGCAGGCCAGGAAGGTGC  
TCTTGGAAACCAAGATTCATAAACTAAGGCGTCTGCGAGATGAGCTGAGGGCTGTGGTGCGGCACCGCGA  
GCCAGCGTGAAAGCATGTATTGCCAATGTAGAACCAACCAACAGTGGAGATCAATGAGCAAGAAGCAT  
TGAAGAGAAATTGAAAATGTAAAGCCATTCTGCAGGCATATCATTTCACAGGCCTCAGTGGTAAACT  
GACCAGCCGAGGAGTTTGTGTCTGCATCAGTACTGCTTTTGAGGGGAACCTATTGGATTCCTATTTGTG  
GACCTTGTACATACAGAAACCACTCCGGATACATACCATTTCAGTCCCAGTCTTCATTCCTGGAAGAGA  
TAGCTGCAAAATATTTACAGACCAACATCCAGCACTTCCTGTTTCAGTCTCTGCGAGTACCTGAATGCTTA  
CTCTGGGAGGAAGTACCAGGCAGACCGCTTCAGAGTGACTTTGCAGCCCTCCTGACTGGGCCCTTGCGA  
AGAAACCACTGTGTAACCTGCTGTCTTACTTACAACTGGATCCAGGGGTCAGTCTTCCCCTTCT  
GTGCTAGATTGCTGTATAAGGACCTCACAGCACTCTCCCACTGACGTACCCGTGACATGTCAAGGAGT  
GGAAGTATTATCCACTTCATGGGAGGAGCAACGAGCATCTCATGAACTCTGTTCTGACGAAGCCCTTG  
CATCAAGTGTTTGCCCTCATTTACAAGAAAAGGAGAAAAGTTGGATATGAGTCTGGTCTCC

**ACGCGTACGCGGCCGCTCGAG** - GFP Tag - GTTTAA



[View online »](#)

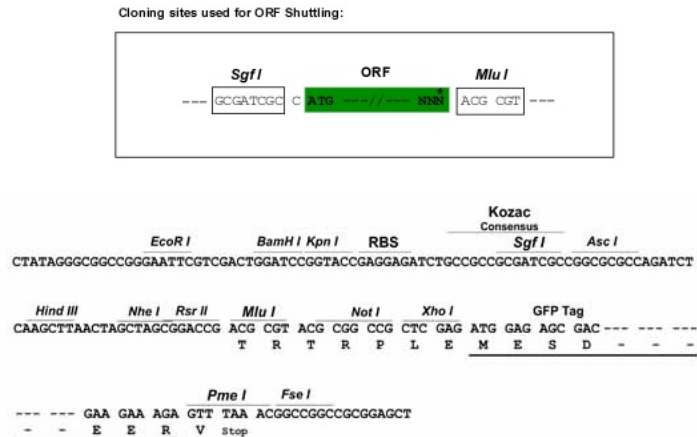
**Protein Sequence:** >RG202636 representing NM\_024322  
 Red=Cloning site Green=Tags(s)

MEQANPLRPDGESKGGVLAHLERLETQVSRSRKQSEELQSVQAQEGALGTKIHKLRRLRDELRAVVRHRR  
 ASVKACIANVEPNQTVINEQEALEEKLENVKAILQAYHFTGLSGKLT SRGVCVCISTAFEGNLLDSYFV  
 DLVIQKPLRIHHHSVPVFIPLLEEIAAKYLQTNIQHFLFSLCEYLNAYSGRKYQADRLQSDFAALLTGPLQ  
 RNPLCNLLSFTYKLDPGGQSFPCARLLYKDLTATLPTDVTVCQGVLEVLTSTSWEEQRASHETLFTCKPL  
 HQVFASFTRKGEKLDMSLVS

TRTRPLE - GFP Tag - V

**Restriction Sites:** SgfI-MluI

**Cloning Scheme:**



**ACCN:** NM\_024322

**ORF Size:** 900 bp

**OTI Disclaimer:** The molecular sequence of this clone aligns with the gene accession number as a point of reference only. However, individual transcript sequences of the same gene can differ through naturally occurring variations (e.g. polymorphisms), each with its own valid existence. This clone is substantially in agreement with the reference, but a complete review of all prevailing variants is recommended prior to use. [More info](#)

**OTI Annotation:** This clone was engineered to express the complete ORF with an expression tag. Expression varies depending on the nature of the gene.

**Components:** The ORF clone is ion-exchange column purified and shipped in a 2D barcoded Matrix tube containing 10ug of transfection-ready, dried plasmid DNA (reconstitute with 100 ul of water).

**Reconstitution Method:**

1. Centrifuge at 5,000xg for 5min.
2. Carefully open the tube and add 100ul of sterile water to dissolve the DNA.
3. Close the tube and incubate for 10 minutes at room temperature.
4. Briefly vortex the tube and then do a quick spin (less than 5000xg) to concentrate the liquid at the bottom.
5. Store the suspended plasmid at -20°C. The DNA is stable for at least one year from date of shipping when stored at -20°C.

**RefSeq:** [NM\\_024322.3](#)

**RefSeq Size:** 1665 bp

**RefSeq ORF:** 903 bp

**Locus ID:** 79172

**UniProt ID:** [Q9BU64](#)

**Cytogenetics:** 2p23.3

**Gene Summary:** This gene encodes a component of the interphase centromere complex. The encoded protein is localized to the centromere throughout the cell cycle and is required for bipolar spindle assembly, chromosome segregation and checkpoint signaling during mitosis. Alternatively spliced transcript variants encoding multiple protein isoforms have been observed for this gene. [provided by RefSeq, Dec 2010]

## Product images:



Circular map for RG202636