

Product datasheet for **RG202635**

CHRDL1 (NM_145234) Human Tagged ORF Clone

Product data:

Product Type:	Expression Plasmids
Product Name:	CHRDL1 (NM_145234) Human Tagged ORF Clone
Tag:	TurboGFP
Symbol:	CHRDL1
Synonyms:	CHL; dA141H5.1; MGC1; MGCN; NRLN1; VOPT
Mammalian Cell Selection:	Neomycin
Vector:	pCMV6-AC-GFP (PS100010)
E. coli Selection:	Ampicillin (100 ug/mL)



[View online »](#)

ORF Nucleotide Sequence:

>RG202635 representing NM_145234
 Red=Cloning site Blue=ORF Green=Tags(s)

TTTTGTAATACGACTCACTATAGGGCGGCCGGAATTCGTCGACTGGATCCGGTACCGAGGAGATCTGCC
 GCC**CGGATCGCC**

ATGAGAAAAAGTGGAAATGGGAGGCATGAAATACATCTTTTCGTTGTTGTTCTTTCTTTTGTAGAAAG
 GAGGCAAAACAGAGCAAGTAAACATTCAGAGACATATTGCATGTTTCAAGACAAGAAGTACAGAGTGGG
 TGAGAGATGGCATCCTTACCTGGAACCTTATGGGTTGGTTTACTGCGTGAAGTGCATCTGCTCAGAGAAT
 GGGAAATGTCTTTCAGCCGAGTCAGATGTCCAAATGTTCAATGCCTTTCTCCTGTGCATATTCCTCATC
 TGTGCTGCCCTCGCTGCCAGACTCCTTACCCCAAGTGAACAATAAGGTGACCAGCAAGTCTTGCAGTA
 CAATGGGACAACCTACCAACATGGAGAGCTGTTTCGTAGCTGAAGGGCTCTTTCAGAATCGGCAACCCAAAT
 CAATGCACCCAGTGCAGCTGTTCCGAGGAAACGTGTATTGTGGTCTCAAGACTTGCCCAAAATTAACCT
 GTGCCCTCCAGTCTCTGTTCCAGATTCCTGCTGCCGGGTATGCAGAGGAGATGGAGAAGTGCATGGGA
 ACATTCTGATGGTGATATCTTCCGGCAACCTGCCAACAGAGAAGCAAGACATTCTTACCACCGCTCTCAC
 TATGATCCTCCACCAAGCCGACAGGCTGGAGGTCTGTCCCGCTTTCCTGGGGCCAGAAGTACCCGGGGAG
 CTCTTATGGATCCAGCAAGCATCAGGAACATTGTGCAAAATTGCATCAATAACAAACACAAGCATGG
 ACAAGTGTGTGTTTCCAATGAAAGACCTATTCTCATGGCGAGTCTGGCACCCAAACCTCCGGGCATTT
 GGCATTGTGGAGTGTGTGCTATGTACTTGTAAATGTCACCAAGCAAGAGTGTAAAGAAAATCCACTGCCCA
 ATCGATACCCCTGCAAGTATCCTCAAAAAATAGACGGAAAATGCTGCAAGGTGTGTCCAGGTAAGAAAGC
 AAAAGAAGTCCAGGCCAAAGCTTTGACAATAAAGGCTACTTCTGCGGGGAAGAAACGATGCCTGTGTAT
 GAGTCTGTATTTCATGGAGATGGGAGACAACCCAGAAAAATAGCACTGGAGACTGAGAGACCACCTCAGG
 TAGAGGTCCACGTTTGGACTATTCGAAAGGGCATTCTCCAGCACTTCCATATTGAGAAGATCTCCAAGAG
 GATGTTTGGAGGCTTCTCACTCAAGCTGGTGACCAGAACAACCCCTGAGCCAGTGAAGATCTTCAAC
 GAAGGAGAAGCTCAGATCAGCCAGATGTGTTCAAGTCGTGATGCAGAACAGAGCTTGAAGATTTAGTCA
 AGGTTTTGTACTGGAGAGATCTGAAAAGGGCCACTGT

ACGCGTACGCGGCCGCTCGAG - GFP Tag - GTTTAA

Protein Sequence:

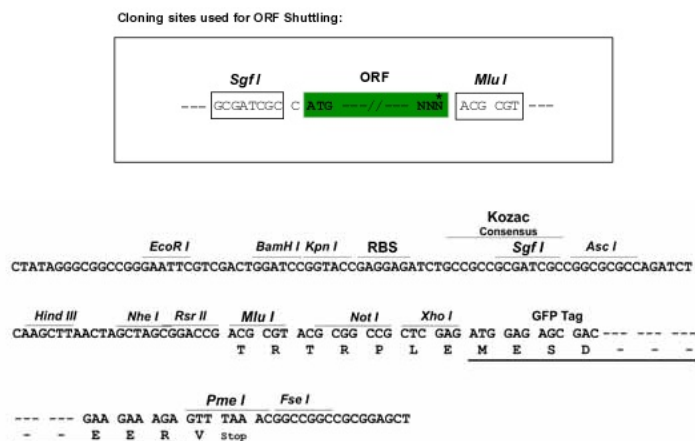
>RG202635 representing NM_145234
 Red=Cloning site Green=Tags(s)

MRKKWKMGGMKYIFSLFFLLLEGGKTEQVKHSEYCMFQDKKYRVGERWHPYLEPYGLVYCVNCICSEN
 GNVLCRSVRCPNVHCLSPVHIPHLCCPRCPDSLPPVNNKVTSKSCEYNGTTYQHGLFVAEGLFQNRQPN
 QCTQCSCSEGNVYCGLKTCPKLTCAFPVSVDPDCCRVCRGDGLSWEHSDGDI FRQPANREARHSYHRSH
 YDPPPSRQAGGLSRFPGARSHRGALMDSQQASGTIVQIVINNKHKHGQVCVSNKTYSHGESWHPNLRAF
 GIVECVLCTCNVTKQECKKIHCPNRYPCYPQKIDGKCKVCPGKKAKELPGQSF DNKGYFCGEETMPVY
 ESVMEDGETTRKIALETERPPQVEVHVWIRKGIHQHFHIEKISKRMFEELPHFKLVTRTTL SQWKIFT
 EGEAQISQMCSSRVCRTLEDLVKVL YLERSEKGHC

TRTRPLE - GFP Tag - V

Restriction Sites:

Sgfl-MluI

Cloning Scheme:


ACCN: NM_145234

ORF Size: 1368 bp

OTI Disclaimer: The molecular sequence of this clone aligns with the gene accession number as a point of reference only. However, individual transcript sequences of the same gene can differ through naturally occurring variations (e.g. polymorphisms), each with its own valid existence. This clone is substantially in agreement with the reference, but a complete review of all prevailing variants is recommended prior to use. [More info](#)

OTI Annotation: This clone was engineered to express the complete ORF with an expression tag. Expression varies depending on the nature of the gene.

Components: The ORF clone is ion-exchange column purified and shipped in a 2D barcoded Matrix tube containing 10ug of transfection-ready, dried plasmid DNA (reconstitute with 100 ul of water).

Reconstitution Method:

1. Centrifuge at 5,000xg for 5min.
2. Carefully open the tube and add 100ul of sterile water to dissolve the DNA.
3. Close the tube and incubate for 10 minutes at room temperature.
4. Briefly vortex the tube and then do a quick spin (less than 5000xg) to concentrate the liquid at the bottom.
5. Store the suspended plasmid at -20°C. The DNA is stable for at least one year from date of shipping when stored at -20°C.

RefSeq: [NM_145234.4](#)

RefSeq Size: 2488 bp

RefSeq ORF: 1371 bp

Locus ID: 91851

UniProt ID: [Q9BU40](#)

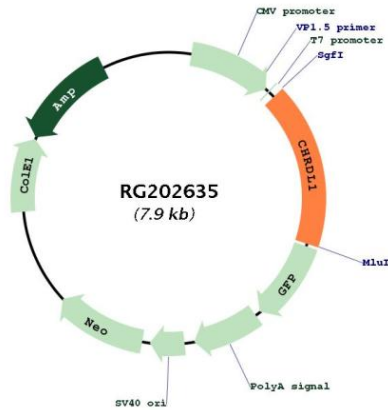
Cytogenetics: Xq23

Domains: VWC

Protein Families: ES Cell Differentiation/IPS, Secreted Protein

Gene Summary: This gene encodes an antagonist of bone morphogenetic protein 4. The encoded protein may play a role in topographic retinotectal projection and in the regulation of retinal angiogenesis in response to hypoxia. Alternatively spliced transcript variants encoding different isoforms have been described. [provided by RefSeq, Jan 2009]

Product images:



Circular map for RG202635