

Product datasheet for **RG202615**

FBXO27 (NM_178820) Human Tagged ORF Clone

Product data:

Product Type:	Expression Plasmids
Product Name:	FBXO27 (NM_178820) Human Tagged ORF Clone
Tag:	TurboGFP
Symbol:	FBXO27
Synonyms:	FBG5; Fbx27
Mammalian Cell Selection:	Neomycin
Vector:	pCMV6-AC-GFP (PS100010)
E. coli Selection:	Ampicillin (100 ug/mL)
ORF Nucleotide Sequence:	>RG202615 representing NM_178820 Red =Cloning site Blue =ORF Green =Tags(s)

TTTGTGTAATACGACTCACTATAGGGCGGCCGGAATTCGTCGACTGGATCCGGTACCGAGGAGATCTGCC
 GCCCGATCGCC

ATGGGCGCCTCGGTCTCCAGGGGCCGGCCGCCCGGGTCCCCGCGCCGGAGCCGGAACCCGAAGAGGCGC
 TGGACCTGAGCCAATACCCCCAGAGCTGCTTCTGGTGGTGCTGAGCCACGTCCCCCGCGCACGCTGCT
 CGGGCGCTGCCCAAGTGTCCGGGGCTGGCGAGCCCTGGTGGACGGCCAGGCCCTGTGGCTGCTGATC
 CTGGCCCGCGACCACGGCGCCACCGCCGCGCGCTGCTGCACCTCGCCCGCAGCTGCCAGTCTCCCGCCC
 GTAACGCCAGGCCTTGCCCTTGGGCCGCTTCTGCGCGCGCAGACCCATCGGACGCAACCTTATTCGCAA
 CCCCTGCGGCCAAGAAGGCCTCCGAAAGTGGATGGTGCAACACGGTGGGACGGCTGGGTGGTGGAGGAA
 AACAGGACAACCGTGCCTGGGGCCCTTCTCAGACGTGCTTCGTGACTTCATTCAGCTGGTGTGCAAGA
 AGCAGGTCTTGACCTAGAGGAGGAGGTCTGTGGCCAGAACTGCTGGATAGTGGCAGGATTGAGATTTG
 TGTCTCTGACTGGTGGGAGCCCGACACGACAGCGGCTGTATGTACAGACTCCTCGTCCAACCTCTAGAC
 GCCAACCAGAGTGTCTAGATAAATTCTCTGCTGTGCCTGATCCCATCCCGCAGTGGAACAACAATGCCT
 GCCTTCACGTACCCACGTGTTCTCAACATCAAGATGGGCGTCCGCTTTGTGTCTTTCGAACACCGGGG
 CCAGGACACACAGTCTGGGCTGGCCACTATGGAGCCCGTGTGACCAACTCCAGTGTGATCGTGCGAGTC
 CGTCTGTCC

ACGCGTACGCGGCCGCTCGAG - GFP Tag - GTTTAA


[View online »](#)

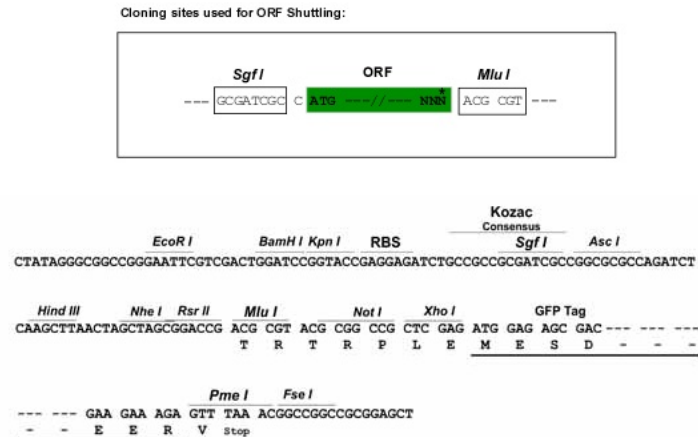
Protein Sequence: >RG202615 representing NM_178820
 Red=Cloning site Green=Tags(s)

MGASVSRGRAARVPAPPEPEEEALDLSQLPPELLLVVLSHVPPTLLGRCRQVCRGWRALVDGQALWLLI
 LARDHGATGRALLHLARSCQSPARNARPCPLGRFCARRPIGRNLIRNPCGQEGLRKWMVQHGGDGWVVEE
 NRTTVPGAPSQTCFVTSFSWCCKKQVLDLEEEGLWPELLDSGRIEICVSDWWGARHDSGCMYRLLVQLLD
 ANQTVLDKFSAYPDPIPQWNNACLHVTHVFSNIKMGVRFVSFEHRGQDTQFWAGHYGARVTNSSVIVRV
 RLS

TRTRPLE – GFP Tag – V

Restriction Sites: SgfI-MluI

Cloning Scheme:



ACCN: NM_178820

ORF Size: 849 bp

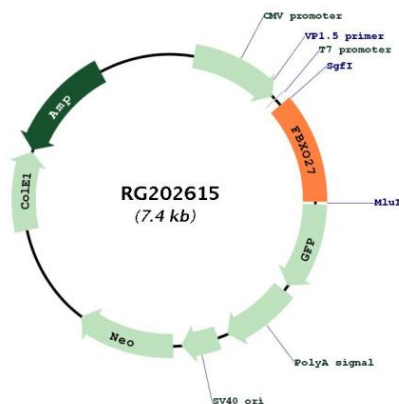
OTI Disclaimer: The molecular sequence of this clone aligns with the gene accession number as a point of reference only. However, individual transcript sequences of the same gene can differ through naturally occurring variations (e.g. polymorphisms), each with its own valid existence. This clone is substantially in agreement with the reference, but a complete review of all prevailing variants is recommended prior to use. [More info](#)

OTI Annotation: This clone was engineered to express the complete ORF with an expression tag. Expression varies depending on the nature of the gene.

Components: The ORF clone is ion-exchange column purified and shipped in a 2D barcoded Matrix tube containing 10ug of transfection-ready, dried plasmid DNA (reconstitute with 100 ul of water).

Reconstitution Method:	1. Centrifuge at 5,000xg for 5min.
	2. Carefully open the tube and add 100ul of sterile water to dissolve the DNA.
	3. Close the tube and incubate for 10 minutes at room temperature.
	4. Briefly vortex the tube and then do a quick spin (less than 5000xg) to concentrate the liquid at the bottom.
	5. Store the suspended plasmid at -20°C. The DNA is stable for at least one year from date of shipping when stored at -20°C.
Note:	Plasmids are not sterile. For experiments where strict sterility is required, filtration with 0.22um filter is required.
RefSeq:	<u>NM_178820.5</u>
RefSeq Size:	2338 bp
RefSeq ORF:	852 bp
Locus ID:	126433
UniProt ID:	<u>Q8NI29</u>
Cytogenetics:	19q13.2
Protein Families:	Druggable Genome
Gene Summary:	Members of the F-box protein family, such as FBXO27, are characterized by an approximately 40-amino acid F-box motif. SCF complexes, formed by SKP1 (MIM 601434), cullin (see CUL1; MIM 603134), and F-box proteins, act as protein-ubiquitin ligases. F-box proteins interact with SKP1 through the F box, and they interact with ubiquitination targets through other protein interaction domains (Jin et al., 2004 [PubMed 15520277]).[supplied by OMIM, Mar 2008]

Product images:



Circular map for RG202615