

## Product datasheet for **RG202613**

### ADPRHL1 (NM\_199162) Human Tagged ORF Clone

#### Product data:

Product Type:	Expression Plasmids
Product Name:	ADPRHL1 (NM_199162) Human Tagged ORF Clone
Tag:	TurboGFP
Symbol:	ADPRHL1
Synonyms:	ARH2
Mammalian Cell Selection:	Neomycin
Vector:	pCMV6-AC-GFP (PS100010)
E. coli Selection:	Ampicillin (100 ug/mL)
ORF Nucleotide Sequence:	>RG202613 representing NM_199162 Red=Cloning site Blue=ORF Green=Tags(s)

TTTTGTAATACGACTCACTATAGGGCGCCGGGAATTCGTCGACTGGATCCGGTACCGAGGAGATCTGCC  
GCC**CGATCGCC**

ATGGTGAGATGCTATGTGAAATCGTTGAGAAGCTTCCAGAACGCCGGCCAGACCCAGCTACCATTGAAG  
GCTGTGCTCAGCTAAAGCCCAATAACTACCTTCTCGCCTGGCACACACCGTTCAATGAAAAAGGCTCAGG  
GTTTGGAGCGGCCACCAAGGCCATGTGCATCGGCCTGCGGTACTGGAAGCCTGAGCGCTGGAGACCCTC  
ATCGAGGTCAGCGTGGAGTGCAGCGGATGACCCACAACCATCCCACAGGCTTCTGGGCTCCCTGTGCA  
CGGCCCTGTTGTGTCGTTCCGCCACAAGGAAAGCCCTGGTCCAGTGGGGGAGAGACATGCTGCGGGC  
GGTGCCTCTGGCAGAAGAGTACTGCAGGAAGACCATCCGGCACACGGCAGAATACCAGGAGCACTGGTTT  
TACTTTGAAGCTAAATGGCAATTTATTTGGAGGAGAGGAAAATCAGTAAAGACTCAGAAAATAAAGCCA  
TCTTCCCCGACAATTATGATGCAGAAGAGAGGAAAAGACCTACAGGAAGTGGAGCTCGGAAGTTCGAGG  
GGGAAGACGAGGCCACGATGCCCCATGATAGCCTATGACGCCCTCCTTGACGAGGAAACAGCTGGACT  
GAGCTGTGTCACCGGGCCATGTTTCATGGAGGGGAGAGCGCGCCACGGGCACCATTGCAGGCTGCCTGT  
TCGGTTGCTGTACGGCTGGACCTCGTTCCAAAGGCTTGTACCAGGACCTGGAGGACAAGGAGAAGCT  
GGAGGACCTGGGCGGGCTCTCTACCGCCTGTCCACAGAGGAGAAG

**ACGCGT**ACGCGGCCGCTCGAG - GFP Tag - GTTTAA



[View online »](#)

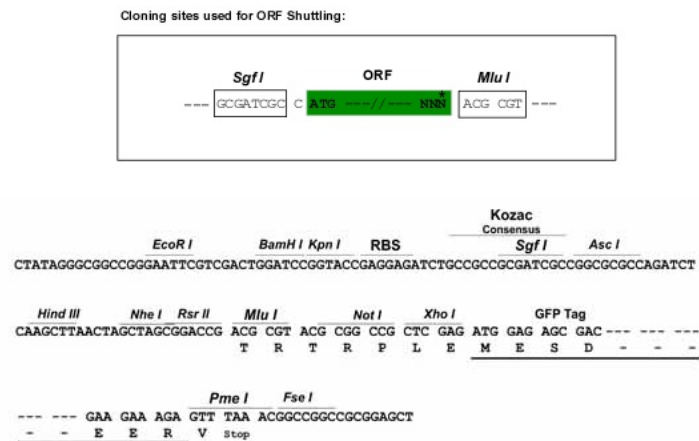
**Protein Sequence:** >RG202613 representing NM\_199162  
Red=Cloning site Green=Tags(s)

MVRCYVEIVEKLPERRPDPATIEGCAQLKPNNYLLAWHTPFNEKGSFGAATKAMCIGLRYWKPERLET  
 IEVSVCEGRMTHNHPTGFLGSLCTALFVSFAAQGKPLVQWRDMLRAVPLAEEYCRKTIIRHTAEYQEHWF  
 YFEAKWQFYLEERKISKDSENKAIFPDNYDAEEREKTYRKWSSEGRGRRGHADAPMIAYDALLAAGNSWT  
 ELCHRAMFHGGESAATGTIAGCLFGLLYGLDLVPKGLYQDLEDKEKLEDLGAALYRLSTEEK

TRTRPLE - GFP Tag - V

**Restriction Sites:** SgfI-MluI

**Cloning Scheme:**



**ACCN:** NM\_199162

**ORF Size:** 816 bp

**OTI Disclaimer:** The molecular sequence of this clone aligns with the gene accession number as a point of reference only. However, individual transcript sequences of the same gene can differ through naturally occurring variations (e.g. polymorphisms), each with its own valid existence. This clone is substantially in agreement with the reference, but a complete review of all prevailing variants is recommended prior to use. [More info](#)

**OTI Annotation:** This clone was engineered to express the complete ORF with an expression tag. Expression varies depending on the nature of the gene.

**Components:** The ORF clone is ion-exchange column purified and shipped in a 2D barcoded Matrix tube containing 10ug of transfection-ready, dried plasmid DNA (reconstitute with 100 ul of water).

**Reconstitution Method:**

1. Centrifuge at 5,000xg for 5min.
2. Carefully open the tube and add 100ul of sterile water to dissolve the DNA.
3. Close the tube and incubate for 10 minutes at room temperature.
4. Briefly vortex the tube and then do a quick spin (less than 5000xg) to concentrate the liquid at the bottom.
5. Store the suspended plasmid at -20°C. The DNA is stable for at least one year from date of shipping when stored at -20°C.

**RefSeq:** [NM\\_199162.3](#)

**RefSeq Size:** 1917 bp

**RefSeq ORF:** 819 bp

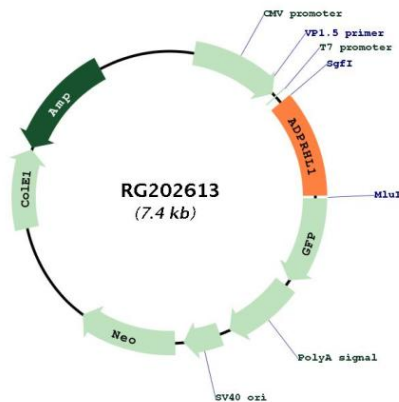
**Locus ID:** 113622

**UniProt ID:** [Q8NDY3](#)

**Cytogenetics:** 13q34

**Gene Summary:** ADP-ribosylation is a reversible posttranslational modification used to regulate protein function. ADP-ribosyltransferases (see ART1; MIM 601625) transfer ADP-ribose from NAD<sup>+</sup> to the target protein, and ADP-ribosylhydrolases, such as ADPRHL1, reverse the reaction (Glowacki et al., 2002 [PubMed 12070318]).[supplied by OMIM, Mar 2008]

## Product images:



Circular map for RG202613