

Product datasheet for **RG202593**

SH3GLB2 (NM_020145) Human Tagged ORF Clone

Product data:

Product Type:	Expression Plasmids
Product Name:	SH3GLB2 (NM_020145) Human Tagged ORF Clone
Tag:	TurboGFP
Symbol:	SH3GLB2
Synonyms:	PP6569; PP9455; RRI1
Mammalian Cell Selection:	Neomycin
Vector:	pCMV6-AC-GFP (PS100010)
E. coli Selection:	Ampicillin (100 ug/mL)
ORF Nucleotide Sequence:	>RG202593 representing NM_020145 Red=Cloning site Blue=ORF Green=Tags(s)

TTTTGTAATACGACTCACTATAGGGCGCCGGGAATTCGTCGACTGGATCCGGTACCGAGGAGATCTGCC
GCC**CGATCGCC**

ATGGACTCAACATGAAGAAGCTGGCGTCGGACGCGGGCATCTTCTTACCCGGGCGGTGCAGTTCACGG
AGGAGAAATTTGGCCAGGCTGAGAAGACTGAGCTTGATGCCACTTTGAAAACCTTCTGGCCGGGCGAGA
CAGCACCAAGAACTGGACAGAGAAGATCTTGAGGCAGACAGAGGTGCTGCTGCAGCCAACCCAGTGCC
CGAGTGGAGGAGTTCCTGTATGAGAAGCTGGACAGGAAGTCCCCTCAAGGGTACCAACGGGGAGCTGC
TGGCTCAGTACATGGCAGACGCGCCAGTGAGCTGGGGCCGACCACCCCTATGGGAAGACTGATCAA
GGTGGCAGAAGCTGAAAAGCAACTGGGAGCCGCGGAGAGGGATTTATCCACACGGCCTCCATCAGCTTC
CTCACACCCTTGCGAACCTTCTGGAGGGGACTGGAAGACCATCTCGAAGGAGAGGCGGCTCTCCAAA
ACCGGCGTCTGGACTTGGATGCCTGCAAAGCGAGGCTGAAGAAGGCCAAGGCTGCAGAAGCCAAAGCCAC
GACGGTGCCTGACTTTCAGGAGACTAGACCTCGTAATTACATTCTCTCGGCCAGCGCCTCCGCGCTCTGG
AATGATGAAGTGGACAAGGCCGAGCAGGAGCTCCGCGTGGCCAGACAGAGTTTGACCGGAAGCAGAAG
TGACCCGTCTCTGTCTGGAGGGAATCAGTAGCACTCACGTGAACCACTGCGCTGCCTCCACGAGTTCGT
CAAGTCTCAGACAACCTACTACGCACAGTGTACCGCCACATGCTGGACTGCAGAAGCAGCTGGGCAGA
TTTCCCGCACCTTCGTGGCACCAACAGAGCCCGCTCCCACCCCTGAGCAGCACCTCACCCACTCTGCT
CTGCGGCCACTATGCCTGTGGTGCCTCTGTGGCCAGCCTGGCCCTCCAGGGGAGGCCTCGCTCTGCCT
GGAAGAGTGGCCCCCTGCCAGTGGGACCCGAAAAGCTCGGGTGTCTATGACTACGAGGCAGCCGAC
AGCAGTGAAGTGGCCCTGCTGGCTGATGAGCTCATCACTGTCTACAGCCTGCCTGGCATGGACCCTGACT
GGCTATTGGCGAGAGAGGCAACAAGAAGGCAAGTCCCTGTACCTACTTGAAGTGTCTCAGC

ACCGTACGCGGCCGCTCGAG - GFP Tag - GTTAA



[View online »](#)

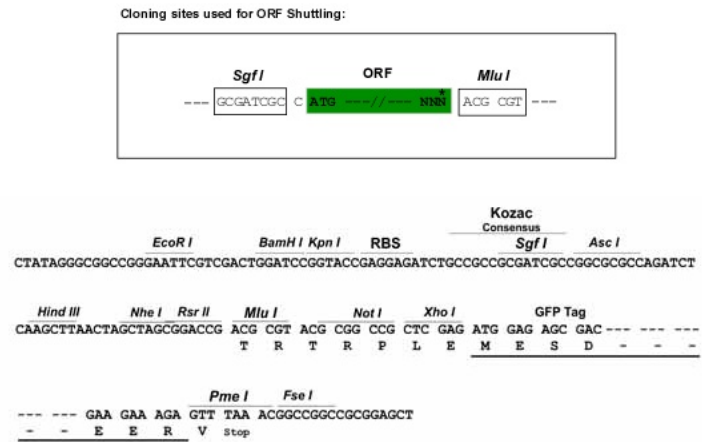
Protein Sequence: >RG202593 representing NM_020145
 Red=Cloning site Green=Tags(s)

MDFNMKKLASDAGIFFTRAVQFTEEKFGQAEKTELDAHFENLLARADSTKNWTEKILRQTEVLLQPNPSA
 RVEEFLYEKLDKRVPSRVNTGELLAQYMADAASELGPTTPYGKTLIKVAEAEKQLGAAERDFIHTASISF
 LTPLRNFLEGDWKTISKERRLLQNRRLDL DACKARLKKAKAAEAKATTVPDFQETRPRNYILSASASALW
 NDEVDKAEQELRVAQTEFDRQAEVTRLLLEGISSTHVNHLRCLHEFVKSQTTYAQCYPYRHM LDKQLGR
 FPGTFVGTTEPASPPLSSTPTTAAATMPVVPSVASLAPPGEASLCL EEVAPPASGTRKARVLYDYEAAD
 SSELALLADELITVYSLPGMDPDWLIGERGNKKGKVPVTYLELLS

TRTRPLE - GFP Tag - V

Restriction Sites: SgfI-MluI

Cloning Scheme:



ACCN: NM_020145

ORF Size: 1185 bp

OTI Disclaimer: The molecular sequence of this clone aligns with the gene accession number as a point of reference only. However, individual transcript sequences of the same gene can differ through naturally occurring variations (e.g. polymorphisms), each with its own valid existence. This clone is substantially in agreement with the reference, but a complete review of all prevailing variants is recommended prior to use. [More info](#)

OTI Annotation: This clone was engineered to express the complete ORF with an expression tag. Expression varies depending on the nature of the gene.

Components: The ORF clone is ion-exchange column purified and shipped in a 2D barcoded Matrix tube containing 10ug of transfection-ready, dried plasmid DNA (reconstitute with 100 ul of water).

Reconstitution Method:

1. Centrifuge at 5,000xg for 5min.
2. Carefully open the tube and add 100ul of sterile water to dissolve the DNA.
3. Close the tube and incubate for 10 minutes at room temperature.
4. Briefly vortex the tube and then do a quick spin (less than 5000xg) to concentrate the liquid at the bottom.
5. Store the suspended plasmid at -20°C. The DNA is stable for at least one year from date of shipping when stored at -20°C.

RefSeq: [NM_020145.2](#), [NP_064530.1](#)

RefSeq Size: 2039 bp

RefSeq ORF: 1188 bp

Locus ID: 56904

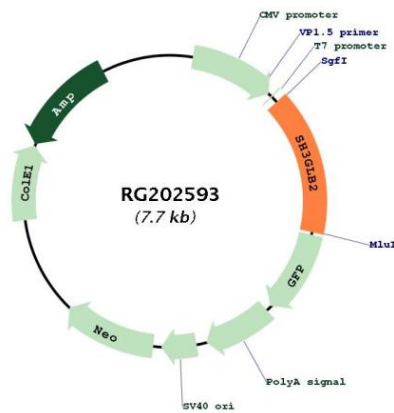
UniProt ID: [Q9NR46](#)

Cytogenetics: 9q34.11

Domains: SH3, BAR

Protein Pathways: Endocytosis

Product images:



Circular map for RG202593