

## Product datasheet for **RG202577**

### SPX (NM\_030572) Human Tagged ORF Clone

#### Product data:

Product Type: Expression Plasmids

Product Name: SPX (NM\_030572) Human Tagged ORF Clone

Tag: TurboGFP

Symbol: SPX

Synonyms: C12orf39

Mammalian Cell Selection: Neomycin

Vector: pCMV6-AC-GFP (PS100010)

E. coli Selection: Ampicillin (100 ug/mL)

ORF Nucleotide Sequence: >RG202577 representing NM\_030572  
Red=Cloning site Blue=ORF Green=Tags(s)

TTTGTGTAATACGACTCACTATAGGGCGGCCGGAATTCGTCGACTGGATCCGGTACCGAGGAGATCTGCC  
GCC**CGATCGCC**

ATGAAGGGACTCAGAAGTCTGGCAGCAACAACCTTGGCTCTTTTCCTGGTGTTTGTTCCTGGGAACT  
CCAGCTGCGCTCCGAGAGACTGTTGGAGAGAAGGAAGTGGACTCCTCAAGCTATGCTCTACCTGAAAGG  
GGCACAGGGTCGCCGCTTCATCTCCGACCAGAGCCGGAGAAAGGACCTCTCCGACCGCCACTGCCGAA  
AGACGAAGCCCAATCCCAACTACTAATTCCGGAGGCAGCAACCATCTTACTGGCGTCCCTTCAGA  
AATCACCAGAAGATGAAGAAAAAACTTTGATCAAACCAGATTCTGGAAGACAGTCTGCTTAAGTGG

**ACGCGT**ACGCGGCCGCTCGAG - GFP Tag - GTTTAA

Protein Sequence: >RG202577 representing NM\_030572  
Red=Cloning site Green=Tags(s)

MKGLRSLAATTLALFLVFVFLGNSSCAPQRLLEARNWTPQAMLYLKGAQGRRFISDQSRKDLSDRPLPE  
RRSPNPQLLTIPEAATILLASLQKSPDEEKNFDQTRFLEDSLLNW

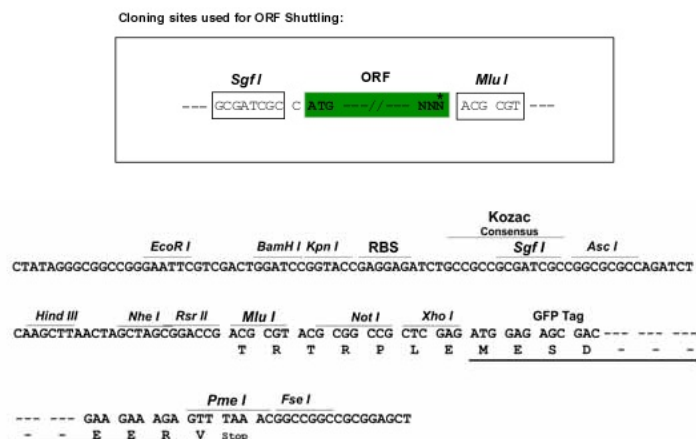
**TRTRPLE** - GFP Tag - V

Restriction Sites: SgfI-MluI



[View online »](#)

### Cloning Scheme:



ACCN: NM 030572

ORF Size: 348 bp

**OTI Disclaimer:** The molecular sequence of this clone aligns with the gene accession number as a point of reference only. However, individual transcript sequences of the same gene can differ through naturally occurring variations (e.g. polymorphisms), each with its own valid existence. This clone is substantially in agreement with the reference, but a complete review of all prevailing variants is recommended prior to use. [More info](#)

**OTI Annotation:** This clone was engineered to express the complete ORF with an expression tag. Expression varies depending on the nature of the gene.

**Components:** The ORF clone is ion-exchange column purified and shipped in a 2D barcoded Matrix tube containing 10ug of transfection-ready, dried plasmid DNA (reconstitute with 100 ul of water).

**Reconstitution Method:**

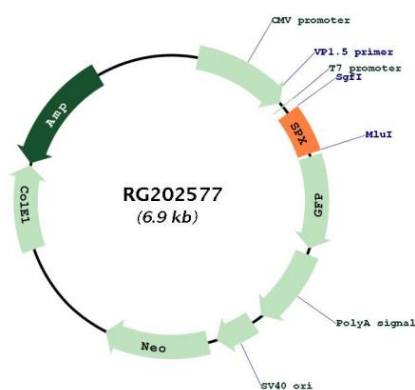
1. Centrifuge at 5,000xg for 5min.
2. Carefully open the tube and add 100ul of sterile water to dissolve the DNA.
3. Close the tube and incubate for 10 minutes at room temperature.
4. Briefly vortex the tube and then do a quick spin (less than 5000xg) to concentrate the liquid at the bottom.
5. Store the suspended plasmid at -20°C. The DNA is stable for at least one year from date of shipping when stored at -20°C.

**Note:** Plasmids are not sterile. For experiments where strict sterility is required, filtration with 0.22um filter is required.

RefSeq: [NM\\_030572.4](#)

RefSeq Size:	639 bp
RefSeq ORF:	351 bp
Locus ID:	80763
UniProt ID:	<a href="#">Q9BT56</a>
Cytogenetics:	12p12.1
Protein Families:	Secreted Protein, Transmembrane
Gene Summary:	The protein encoded by this gene is a hormone involved in modulation of cardiovascular and renal function. It has also been shown in rats to cause weight loss. Several transcript variants have been found for this gene. [provided by RefSeq, Feb 2016]

## Product images:



Circular map for RG202577