

Product datasheet for **RG202560**

TTC11 (FIS1) (NM_016068) Human Tagged ORF Clone

Product data:

Product Type: Expression Plasmids
Product Name: TTC11 (FIS1) (NM_016068) Human Tagged ORF Clone
Tag: TurboGFP
Symbol: TTC11
Synonyms: CGI-135; TTC11
Mammalian Cell Selection: Neomycin
Vector: pCMV6-AC-GFP (PS100010)
E. coli Selection: Ampicillin (100 ug/mL)
ORF Nucleotide Sequence: >RG202560 representing NM_016068
 Red=Cloning site Blue=ORF Green=Tags(s)

TTTTGTAATACGACTCACTATAGGGCGGCCGGAATTCGTCGACTGGATCCGGTACCGAGGAGATCTGCC
 GCC**CGATCGCC**

ATGGAGGCCGTGCTGAACGAGCTGGTGTCTGTGGAGGACCTGCTGAAGTTTAAAAGAAATTCAGTCTG
 AGAAGGCAGCAGGCTCGGTGTCCAAGAGCACGCAGTTTGAGTACGCCTGGTGCCTGGTCCGGAGCAAGTA
 CAATGATGACATCCGTAAGGCATCGTGTCTCGAGGAGCTGCTGCCAAAGGGAGCAAGGAGGAACAG
 CGGGATTACGTCTTCTACCTGGCCGTGGGAACCTACCGGCTCAAGGAATACGAGAAGGCCTTAAAGTACG
 TCCGCGGGTTGCTGCAGACAGAGCCCCAGAACAACCAGGCCAAGGAACCTGGAGCGGCTCATTGACAAGGC
 CATGAAGAAAGATGGACTCGTGGCATGGCCATCGTGGGAGGCATGGCCCTGGGTGTGGCGGACTGGCC
 GGACTCATCGGACTTGTGTGTCCAAGTCCAAATCC

ACGCGTACGCGGCCGCTCGAG - GFP Tag - GTTTAA

Protein Sequence: >RG202560 representing NM_016068
 Red=Cloning site Green=Tags(s)

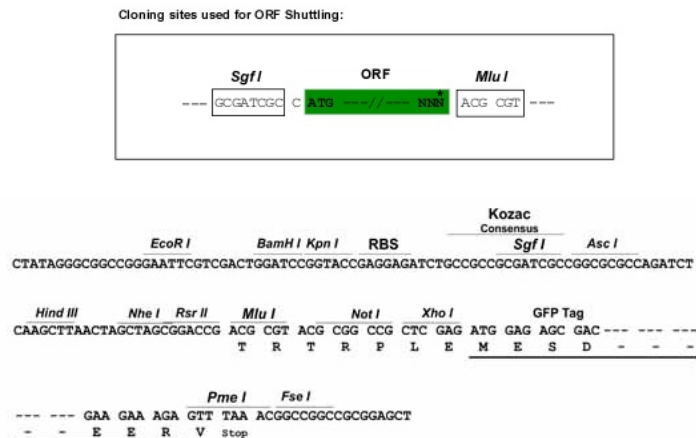
MEAVLNELVSVEDLLKFEKKFQSEKAAGSVSKSTQFEYAWCLVRSKYNDIRKGIVLLEELLPKGSKEEQ
 RDYVYFYLAVGNRYLKEYEKALKYVRGLLQTEPQNNQAKELERLIDKAMKKDGLVGMIVGGMALGVAGLA
 GLIGLAVSKSKS

TRTRPLE - GFP Tag - V

Restriction Sites: SgfI-MluI



[View online »](#)

Cloning Scheme:


ACCN: NM_016068

ORF Size: 456 bp

OTI Disclaimer: The molecular sequence of this clone aligns with the gene accession number as a point of reference only. However, individual transcript sequences of the same gene can differ through naturally occurring variations (e.g. polymorphisms), each with its own valid existence. This clone is substantially in agreement with the reference, but a complete review of all prevailing variants is recommended prior to use. [More info](#)

OTI Annotation: This clone was engineered to express the complete ORF with an expression tag. Expression varies depending on the nature of the gene.

Components: The ORF clone is ion-exchange column purified and shipped in a 2D barcoded Matrix tube containing 10ug of transfection-ready, dried plasmid DNA (reconstitute with 100 ul of water).

Reconstitution Method:

1. Centrifuge at 5,000xg for 5min.
2. Carefully open the tube and add 100ul of sterile water to dissolve the DNA.
3. Close the tube and incubate for 10 minutes at room temperature.
4. Briefly vortex the tube and then do a quick spin (less than 5000xg) to concentrate the liquid at the bottom.
5. Store the suspended plasmid at -20°C. The DNA is stable for at least one year from date of shipping when stored at -20°C.

RefSeq: [NM_016068.3](#)

RefSeq Size: 735 bp

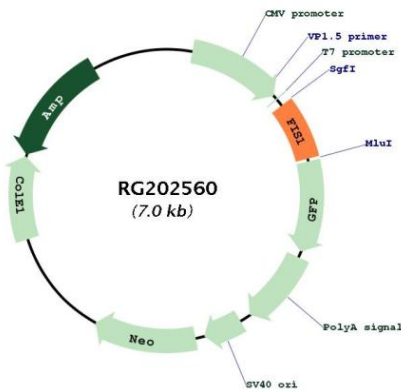
RefSeq ORF: 459 bp

Locus ID: 51024

UniProt ID: [Q9Y3D6](#)

Cytogenetics:	7q22.1
Protein Families:	Transmembrane
Gene Summary:	The balance between fission and fusion regulates the morphology of mitochondria. TTC11 is a component of a mitochondrial complex that promotes mitochondrial fission (James et al., 2003 [PubMed 12783892]).[supplied by OMIM, Mar 2008]

Product images:



Circular map for RG202560