

## Product datasheet for **RG202550**

### ZNF503 (NM\_032772) Human Tagged ORF Clone

#### Product data:

Product Type:	Expression Plasmids
Product Name:	ZNF503 (NM_032772) Human Tagged ORF Clone
Tag:	TurboGFP
Symbol:	ZNF503
Synonyms:	Nlz2; NOLZ-1; NOLZ1
Mammalian Cell Selection:	Neomycin
Vector:	pCMV6-AC-GFP (PS100010)
E. coli Selection:	Ampicillin (100 ug/mL)



[View online »](#)

**ORF Nucleotide Sequence:**

>RG202550 representing NM\_032772  
 Red=Cloning site Blue=ORF Green=Tags(s)

TTTTGTAATACGACTCACTATAGGGCGGCCGGGAATTCGTCGACTGGATCCGGTACCGAGGAGATCTGCC  
 GCC**CGGATCGCC**

ATGAGCACAGCGCCCTCGCTTTCTGCCCTAAGAAGCAGTAAGCACAGCGCGCGCGCGCGGAGGCG  
 GAGGCGCGGTGCAGACCTGCCTGGACCAGCGGCTCTCTGAAATAGCTCCGGCCCCGGCCAGGCTC  
 GTCCCCGGCCGGCAGACCAAGCCTTTTGTGCACGCCGTGCCCCCTCTGACCCCTGCGCCAGGCCAAC  
 CGCCTGCCAATCAAGGTCTGAAGATGCTGACGGCACGAAGTGGCCACATTTTGCACCCGAGTACCTGC  
 AGCCCTGCCTCCACGCCGGTCAAGCCATCGAGCTCGATGCCAAGAAGAGCCGCTGGCGCTGTTGGC  
 GCAAACATGTTTCGAGATCGGGAAGCCGACCCCTCGCCCTCTCCTCAAACCTCTCTCGTTGCTCCAAC  
 GGGGGCGCGCGCGGTGCCGGCGCGGTGCTGCGGGGACAAGGACACCAAATCGGGCCCCCTGAAGC  
 TGAGCGACATCGGCGTGGAGGACAAGTCGAGTTTCAAGCCGACTCCAACCCGGCTCGGATAAGAAGGA  
 GCCGGGAGGCGCGGTGGAGGCGGTGGCGGTGGCGGGGGCGCGCGGGGGTGTTCGTCGGAGAAGTCG  
 GGATTCGGGTACCGAGCGCCACCTGCCAGCATTACGCCCAGGACAGGACGCCGAGCTCCAGCGCCT  
 CGGCTGCTCGCCGGGAGGTATGCTGTCCTCGGCCGGGGTGCCCGGAGGGCAAGGACGACAAGAAAGA  
 CACCGACGTGGCGCGGTGGCAAGGGCACCGGGGCGCCTCGGCCGAAGGGGGACCCACGGGGTGGCA  
 CACGGCCGGATTAGTGCGGCGCGGATTAATGTGGATGTGAACCAGCATCCGGATGGGGGCCGGGAG  
 GCAAGGCTCTGGGCTCGGACTGCGGCGGTTTCATCGGGTCCAGCTCCGGCTCCGGCCCCAGCGGCCAC  
 CTCTCTCAGTGTGGGCTCTGGGCTGGTGGCTCCCGTGTACCCCTACAAGCCGGGCCAGACAGTGTTC  
 CCTCTGCCTCCCGGGTATGACCTACCCAGGACGCTGGCCGGGCTACGCCGGCTACCCGCCCAGT  
 TCCTGCCACAGGCGTGGCACTTGACCCACCAAGCCGGGACGCTGGTGGGGGCGCAGCTGGCGCGGC  
 CGCGGCCGGTCTCTGGGCTGCAGTAAGCCGGCCGGCTCCAGCCCTTTGGCCGGAGCGTCTCCGCGTCC  
 GTGATGACAGCCAGTTTGTGCCGGGACCCTTACTGCCTCAGCTACCACTGCGCTAGCCACCTGGCAGGG  
 CGGCGGCCCCAGCGCTTCTTGCACATGATCCGGCTGCTGCGGCTGCGGCGTGAAGTCCGGATACCC  
 GCTGGTGTACCCACGCACCCGCTGCACGGTGTGCACTCCTCGCTAACGGCCGCCGGGCTGCTGGCGCC  
 ACACCGCCCTCCCTGGCCGGCCACCCCTTACCCTACGGCTTATGCTCCCTAACGACCCACTCCCC  
 ACATCTGCAACTGGGTGTGGCAACGGGCGTGCACAAGCGCTTCGCCAGTCCGAAGAGCTGCTGAG  
 CCATTGGGACCCATACGGCATTCCCGGGACAGACAACTGCTGTGGGCTACCCAGCTCGTCTGCT  
 CTGGCCAGCGCTGCCGGCCCGCATGGCTTGCCACATGCACATCCACCTCGGGCGCACGGGACGCC  
 CTGGGACGCTGGCGTGGCAGCCCCACACGGCTGGGACTCAGCAGCCGCTACCACCCCTACTCCAA  
 GAGCCCGTTCACAGCCTGGCGCCCCGTGCCGTGCCCGCCGACCCGGACCGTACTACTCCCCCTAC  
 GCCCTACTCGGACAGAGACTGACCACCGCCTCGGCGTGGGGTATCAG

**ACGCGT**ACGCGGCCGCTCGAG - GFP Tag - GTTTAA

**Protein Sequence:**

>RG202550 representing NM\_032772  
 Red=Cloning site Green=Tags(s)

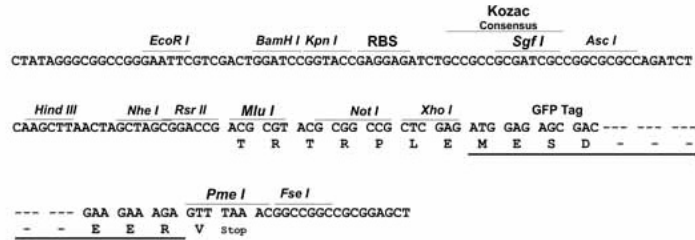
MSTAPSLSALRSSKHSGGGGGGGGGADPAWTSALSGNSSGPGPGSSPAGSTKPFVHAVPPSDPLRQAN  
 RLPKIKVLKMLTARTGHILHPEYLQPLPSTPVSPIELDAKKSPLALLAQTCSQIGKPDPPSSKLSVASN  
 GGGAGGAGGGAAGDKDTKSGPLKLSDIGVEDKSSFKPYSKPGSDKKEPGGGGGGGGGGGGGVSEKS  
 GFRVPSATCQPFTPRTGSPSSASACSPGGMLSSAGGAPEGKDDKDDTDVGGGGKGTGGASAEGGPTGLA  
 HGRISCGGGINVDVNHQHPDGGPGKALGSDCGSSGSSSGSPSAPTSSSVLGSGLVAPVSPYKPGQTVF  
 PLPPAGMTYPGSLAGAYAGYPPQFLPHGVALDPTKPGSLVGAQLAAAAAGSLGCSKPAAGSPLAGASPPS  
 VMTASLCRDPYCLSYHCASHLAGAAAASASCAHDPAAAAAALKSGYPLVYPHPLHGVHSSLTAAAAAGA  
 TPPSLAGHPLYPYGFMLPNDPLPHICNWVSANGPCDKRFATSEELLSHLRTHTAFTPDTKLLSGYPSSSS  
 LASAAAAAMACHMHIPTSGAPGSPGTLALRSPHHALGLSSRYHPYSKSPLETPGAPVVPVPAATGPPYSPY  
 ALYGQRLTTASALGYQ

**TRTRPLE** - GFP Tag - V

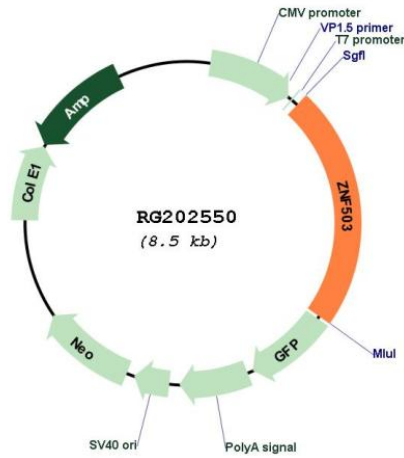
Restriction Sites: Sgfl-MluI

Cloning Scheme:

Cloning sites used for ORF Shutting:



Plasmid Map:



ACCN: NM\_032772

ORF Size: 1938 bp

<b>OTI Disclaimer:</b>	<p>Due to the inherent nature of this plasmid, standard methods to replicate additional amounts of DNA in E. coli are highly likely to result in mutations and/or rearrangements. Therefore, OriGene does not guarantee the capability to replicate this plasmid DNA. Additional amounts of DNA can be purchased from OriGene with batch-specific, full-sequence verification at a reduced cost. Please contact our customer care team at <a href="mailto:custsupport@origene.com">custsupport@origene.com</a> or by calling 301.340.3188 option 3 for pricing and delivery.</p> <p>The molecular sequence of this clone aligns with the gene accession number as a point of reference only. However, individual transcript sequences of the same gene can differ through naturally occurring variations (e.g. polymorphisms), each with its own valid existence. This clone is substantially in agreement with the reference, but a complete review of all prevailing variants is recommended prior to use. <a href="#">More info</a></p>
<b>OTI Annotation:</b>	<p>This clone was engineered to express the complete ORF with an expression tag. Expression varies depending on the nature of the gene.</p>
<b>Components:</b>	<p>The ORF clone is ion-exchange column purified and shipped in a 2D barcoded Matrix tube containing 10ug of transfection-ready, dried plasmid DNA (reconstitute with 100 ul of water).</p>
<b>Reconstitution Method:</b>	<ol style="list-style-type: none"><li>1. Centrifuge at 5,000xg for 5min.</li><li>2. Carefully open the tube and add 100ul of sterile water to dissolve the DNA.</li><li>3. Close the tube and incubate for 10 minutes at room temperature.</li><li>4. Briefly vortex the tube and then do a quick spin (less than 5000xg) to concentrate the liquid at the bottom.</li><li>5. Store the suspended plasmid at -20°C. The DNA is stable for at least one year from date of shipping when stored at -20°C.</li></ol>
<b>RefSeq:</b>	<a href="#">NM_032772.6</a>
<b>RefSeq Size:</b>	3198 bp
<b>RefSeq ORF:</b>	1941 bp
<b>Locus ID:</b>	84858
<b>UniProt ID:</b>	<a href="#">Q96F45</a>
<b>Cytogenetics:</b>	10q22.2
<b>Gene Summary:</b>	May function as a transcriptional repressor.[UniProtKB/Swiss-Prot Function]