

Product datasheet for **RG202540**

FOXM1 (NM_202003) Human Tagged ORF Clone

Product data:

Product Type:	Expression Plasmids
Product Name:	FOXM1 (NM_202003) Human Tagged ORF Clone
Tag:	TurboGFP
Symbol:	FOXM1
Synonyms:	FKHL16; FOXM1A; FOXM1B; FOXM1C; HFH-11; HFH11; HNF-3; INS-1; MPHOSPH2; MPP-2; MPP2; PIG29; TRIDENT
Mammalian Cell Selection:	Neomycin
Vector:	pCMV6-AC-GFP (PS100010)
E. coli Selection:	Ampicillin (100 ug/mL)



[View online »](#)

ORF Nucleotide Sequence:

>RG202540 representing NM_202003
 Red=Cloning site Blue=ORF Green=Tags(s)

TTTTGTAATACGACTCACTATAGGGCGGCCGGGAATTCGTCGACTGGATCCGGTACCGAGGAGATCTGCC
 GCC**CGCATCGCC**

ATGAAAAC TAGCCCCGTCGGCCACTGATTCTCAAAGACGGAGGCTGCCCTTCTGTTCAAAATGCC
 CAAGTGAACATCAGAGGAGGAACCTAAGAGATCCCCTGCCAACAGGAGTCTAATCAAGCAGAGGCCTC
 CAAGGAAGTGGCAGAGTCCAACCTTTGCAAGTTTCCAGCTGGGATCAAGATTATTAACCACCCACCATG
 CCCAACACGCAAGTAGTGGCCATCCCCAACATGCTAATATTCACAGCATCATCACAGCACTGACTGCCA
 AGGGAAAAGAGAGTGGCAGTAGTGGGCCAACAAATTCATCCTCATCAGCTGTGGGGAGCCCCAACTCA
 GCCTCCAGGACTCCGGCCTCAAACCCAAACCAGCTATGATGCCAAAAGGACAGAAGTGACCCTGGAGACC
 TTGGGACCAAAACCTGCAGCTAGGGATGTGAATCTTCTAGACCACCTGGAGCCCTTTGCGAGCAGAAAC
 GGGAGACCTGTGCAGATGGTGGCAGCAGGCTGCACTATCAACAATAGCCTATCCAACATCCAGTGGCT
 TCGAAAGATGAGTTCTGATGGACTGGGCTCCCGCAGCATCAAGCAAGAGATGGAGGAAAAGGAGAATTGT
 CACCTGGAGCAGGCAGAGTTAAGGTTGAGGAGCCTTCGAGACCATCAGCGTCTGGCAGAACTCTGTGT
 CTGAGCGGCCACCTACTCTTACATGGCCATGATACAATTCGCCATCAACAGCACTGAGAGGAAGCGCAT
 GACTTTGAAAGACATCTATACGTGGATTGAGGACCACTTTCCCTACTTTAAGCACATTGCCAAGCCAGGC
 TGGAGAAGTCCATCCGCCACAACCTTTCCCTGCACGACATGTTTGTCCGGGAGACGTCTGCCAATGGCA
 AGGTCTCCTTCTGGACCATTACCCCAAGTGCACACCGCTACTTGACATTGGACCAGGTGTTAAGCAGCA
 GAAACGACCGAATCCAGAGCTCCGCCGGAACATGACCATCAAACCGAATCCCCCTGGGCGCACGGCGG
 AAGATGAAGCCACTGCTACCACGGGTGACTCATACCTGGTACCTATCCAGTTCGGTGAACCAAGTAC
 TGGTGTTCAGCCCTCGGTGAAGGTGCCATTGCCCTGGCGGCTTCCCTCATGAGCTCAGAGCTTGCCCG
 CCATAGCAAGCGAGTCCGCATTGCCCCCAAGGTGCTGCTAGCTGAGGAGGGGATAGCTCCTCTTTCTTCT
 GCAGGACCAAGGAAAGAGGAGAACTCCTGTTGGAGAAGGGTTTTCTCCTTTGCTTCCAGTTCAGACTA
 TCAAGGAGGAAGAAATCCAGCCTGGGGAGGAAATGCCACACTTAGCGAGACCCATCAAAGTGAGAGGCC
 TCCCTTGGAAAGAGTGGCCCTCCCGGCCCATCTTTCAAAGAGGAATCATCTCACTCCTGGGAGGATTG
 TCCCAATCTCCACCCCAAGACCAAGAAGTCTACAGTGGGCTTAGGTCCCCAACCCGGTGTGTCTCGG
 AAATGCTTGTGATTCAACACAGGGAGAGGAGGGAGAGGAGCCGGTCTCGGAGGAAACAGCATCTACTGCC
 TCCCTGTGTGGATGAGCCGGAGTGTCTTCTCAGAGGGGCCAGTACTCCCGTGGGCCGAGAGCTC
 CCGTTCACAGCACTCCTCTGACCCTGCCTCCAGCTCAGCTACTCCAGGAAGTGGGAGACCTTTTA
 AGACACCCATTAAGGAAACGCTGCCATCTCCTCCACCCGAGCAAATCTGTCTCCCGAACCCTGA
 ATCCTGGAGGCTCACGCCCCAGCCAAAGTAGGGGACTGGATTCAGCCAGTACAAAACCCCCAGGGT
 GCCTCTGACCCCTTGCTGACCCCTGGGGCTGATGGATCTCAGCACCCTCCCTTGCAAAGTGCTCCCC
 CCCTTGAATCACCGCAAAGGCTCCTCAGTTCAGAACCTTAGACCTCATCTCCGTCCTTTGGCAACTC
 TTCTCCCTCAGATATAGACGTCCCAAGCCAGGCTCCCGGAGCCACAGGTTTCTGGCCTTGACGCAAT
 CGTTCTGACAGAAGGCTGGTCTGGACACAATGAATGACAGCCTCAGCAAGATCCTGCTGGACATCA
 GCTTTCCTGGCCTGGACGAGGACCACTGGGCCCTGACAACATCAACTGGTCCCAGTTTATCTCTGAGCT
 ACAG

ACGCGTACGCGGCCGCTCGAG - GFP Tag - GTTTAA

Protein Sequence: >RG202540 representing NM_202003
 Red=Cloning site Green=Tags(s)

```

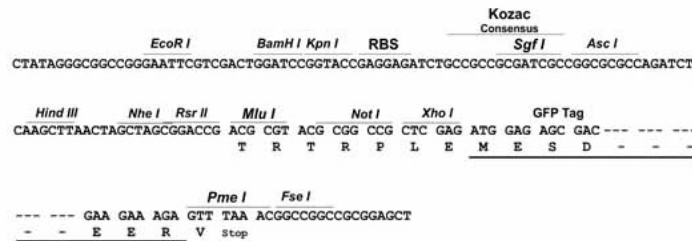
MKTSPRRPLILKRRRLPLPVQNPSETSEEPKRSQAQESNQAEASKEVAESNSCKFPAGIKIINHPTM
PNTQVVAIPNNANIHSIITALTAGKESGSSGNKFI L I SCGGAPTQPPGLRPQTQTSYDAKRTEVTLET
LGPKPAARDVNLPRPPGALCEQKRETCADGEAAGCTINNSLSNIQWLRKMSDGLGSRSIKQEMEEKENC
HLEQRQVKVEEPSRPSASWQNSVSRPPYSYMIQFAINSTERKRM TLKDIYTWIEDHFPYFKHIAKPM
WKNSIRHNL SLHDMFVRETSANGKVSFWTIHPSANRYL TLDQVFKQQKRPNPELRRNMTIKTELPLGARR
KMKPLLPRVSSYLVP IQFPVNQSLV LQPSVKVPLPLAASLMSEELARHSKRVR IAPKVL LAEEGIAPLSS
AGPGKEEKLLFGEGFSPLLPVQTIKEEEIQPGEEMPHLARP I KVESPPLEEWSPAPSFKEESSHWEDS
SQSPTPRPKSYSGLRSPTRCVSEMLVIQHRRERSRSRRKQHLLPPCVDEPELLFSEGPSTRWAAEL
PPFADSSDPASQLSYSQEVGGPFKTPIKETLPISSTPSKSVLPRTPE SWRLTPPAKVGGLDFSPVQTPQG
ASDPLPDLGLMDLSTTPLQSAPPLESPQRLLSSEPLDLISVPFGNSSPSDIDVPKPGSPEPQVSGLAAN
RSLTEGLVLDTMNDSLKILLDISFPGLDEDPLGPDNINWSQFIPELQ
  
```

TRTRPLE - GFP Tag - V

Restriction Sites: SgfI-MluI

Cloning Scheme:

Cloning sites used for ORF Shuttling:

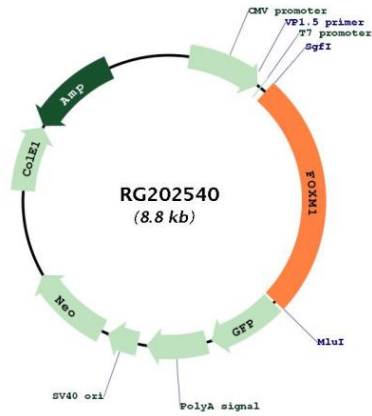


ACCN: NM_202003

ORF Size: 2244 bp

OTI Disclaimer:	<p>Due to the inherent nature of this plasmid, standard methods to replicate additional amounts of DNA in E. coli are highly likely to result in mutations and/or rearrangements. Therefore, OriGene does not guarantee the capability to replicate this plasmid DNA. Additional amounts of DNA can be purchased from OriGene with batch-specific, full-sequence verification at a reduced cost. Please contact our customer care team at custsupport@origene.com or by calling 301.340.3188 option 3 for pricing and delivery.</p> <p>The molecular sequence of this clone aligns with the gene accession number as a point of reference only. However, individual transcript sequences of the same gene can differ through naturally occurring variations (e.g. polymorphisms), each with its own valid existence. This clone is substantially in agreement with the reference, but a complete review of all prevailing variants is recommended prior to use. More info</p>
OTI Annotation:	This clone was engineered to express the complete ORF with an expression tag. Expression varies depending on the nature of the gene.
Components:	The ORF clone is ion-exchange column purified and shipped in a 2D barcoded Matrix tube containing 10ug of transfection-ready, dried plasmid DNA (reconstitute with 100 ul of water).
Reconstitution Method:	<ol style="list-style-type: none"> 1. Centrifuge at 5,000xg for 5min. 2. Carefully open the tube and add 100ul of sterile water to dissolve the DNA. 3. Close the tube and incubate for 10 minutes at room temperature. 4. Briefly vortex the tube and then do a quick spin (less than 5000xg) to concentrate the liquid at the bottom. 5. Store the suspended plasmid at -20°C. The DNA is stable for at least one year from date of shipping when stored at -20°C.
RefSeq:	NM_202003.1 , NP_973732.1
RefSeq Size:	3487 bp
RefSeq ORF:	2247 bp
Locus ID:	2305
UniProt ID:	Q08050
Cytogenetics:	12p13.33
Protein Families:	Transcription Factors
Gene Summary:	The protein encoded by this gene is a transcriptional activator involved in cell proliferation. The encoded protein is phosphorylated in M phase and regulates the expression of several cell cycle genes, such as cyclin B1 and cyclin D1. Several transcript variants encoding different isoforms have been found for this gene. [provided by RefSeq, Jul 2011]

Product images:



Circular map for RG202540