

Product datasheet for **RG202521**

GJB5 (NM_005268) Human Tagged ORF Clone

Product data:

Product Type: Expression Plasmids
Product Name: GJB5 (NM_005268) Human Tagged ORF Clone
Tag: TurboGFP
Symbol: GJB5
Synonyms: CX31.1
Mammalian Cell Selection: Neomycin
Vector: pCMV6-AC-GFP (PS100010)
E. coli Selection: Ampicillin (100 ug/mL)
ORF Nucleotide Sequence: >RG202521 representing NM_005268
Red=Cloning site Blue=ORF Green=Tags(s)

TTTTGTAATACGACTCACTATAGGGCGGCCGGAATTCGTCGACTGGATCCGGTACCGAGGAGATCTGCC
GCC**CGATCGCC**

ATGAAGTGGAGTATCTTTGAGGGACTCCTGAGTGGGGTCAACAAGTACTCCACAGCCTTTGGGCGCATCT
GGCTGTCTCTGGTCTTCATCTTCCGCGTGTGGTGTACCTGGTGACGGCCGAGCGTGTGGAGTGATGA
CCACAAGGACTTCGACTGCAATACTCGCCAGCCGGCTGCTCCAACGTCTGCTTTGATGAGTTCTCCCT
GTGTCCCATGTGCGCCTCTGGCCCTGCAGCTTATCCTGGTGACATGCCCTCACTGCTCGTGGTCAATGC
ACGTGGCCTACCGGGAGTTTCAGGAGAAGAGGCCACCGAGAAGCCATGGGGAGAAGAGTGGGCGCCTCTA
CCTGAACCCCGCAAGAAGCGGGGTGGGCTCTGGTGGACATATGTCTGCAGCCTAGTGTCAAGGCGAGC
GTGGACATCGCCTTTCTCTATGTGTTCCACTATTCTACCCCAAATATATCCTCCCTCCTGTGGTCAAGT
GCCACGCAGATCCATGTCCCAATATAGTGGACTGCTTCATCTCCAAGCCCTCAGAGAAGAACATTTTAC
CCTCTTATGGTGGCCACAGCTGCCATCTGCATCCTGCTCAACCTCGTGGAGTCACTACCTGGTGGAGC
AAGAGATGCCACGAGTGCCTGGCAGCAAGGAAAGCTCAAGCCATGTGCACAGGTCACTACCCCCACGGTA
CCACCTCTTCTGCAACAAGACGACCTCCTTTTCGGGTGACCTCATCTTTCTGGGCTCAGACAGTCATCC
TCCTCTTACCAGACCGCCCGGAGACCATGTGAAGAAAACCATCTTG

AGCGG**ACCG**ACGCGTACGCGCCGCTCGAG - GFP Tag - GTTTAA



[View online »](#)

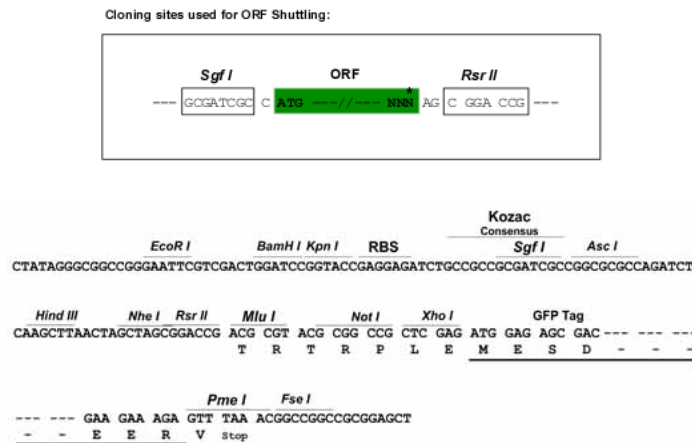
Protein Sequence: >RG202521 representing NM_005268
 Red=Cloning site Green=Tags(s)

MNWSIFEGLLSGVNKYSTAFGRWL SLVFI FRVLVYL VTAERVVSDDHKDFDCNTRQPGCSNVCFDEFFP
 VSHVRLWALQLILVTCPSLLVVMHVAYREVQEKRHREAHGENSGRLYLNP GK KRGLLWWTYVCSLVFKAS
 VDIAFLYVHFSFYPKYILPPVVKCHADPCPNIVDCFISKPSEKNIFTLFMVATAAICILLNLVELIYLVS
 KRCHDECLAARQAQAMCTGHHPHGTTSSCKQDDL LSGDLIFL GSDSHPLL PDRPRDHVKKTIL

SGPTRRRLE - GFP Tag - V

Restriction Sites: SgfI-RsrII

Cloning Scheme:



ACCN: NM_005268

ORF Size: 819 bp

OTI Disclaimer: The molecular sequence of this clone aligns with the gene accession number as a point of reference only. However, individual transcript sequences of the same gene can differ through naturally occurring variations (e.g. polymorphisms), each with its own valid existence. This clone is substantially in agreement with the reference, but a complete review of all prevailing variants is recommended prior to use. [More info](#)

OTI Annotation: This clone was engineered to express the complete ORF with an expression tag. Expression varies depending on the nature of the gene.

Components: The ORF clone is ion-exchange column purified and shipped in a 2D barcoded Matrix tube containing 10ug of transfection-ready, dried plasmid DNA (reconstitute with 100 ul of water).

Reconstitution Method:

1. Centrifuge at 5,000xg for 5min.
2. Carefully open the tube and add 100ul of sterile water to dissolve the DNA.
3. Close the tube and incubate for 10 minutes at room temperature.
4. Briefly vortex the tube and then do a quick spin (less than 5000xg) to concentrate the liquid at the bottom.
5. Store the suspended plasmid at -20°C. The DNA is stable for at least one year from date of shipping when stored at -20°C.

RefSeq: [NM_005268.4](#)

RefSeq Size: 1299 bp

RefSeq ORF: 822 bp

Locus ID: 2709

UniProt ID: [O95377](#)

Cytogenetics: 1p34.3

Protein Families: Ion Channels: Other, Transmembrane

Gene Summary: This gene encodes a member of the beta-type (group I) connexin family. The encoded protein is a gap junction protein involved in intercellular communication related to epidermal differentiation and environmental sensing. This gene has been linked to non-small cell lung cancer. [provided by RefSeq, Nov 2012]

Product images:



Circular map for RG202521