

Product datasheet for **RG202499**

PLK2 (NM_006622) Human Tagged ORF Clone

Product data:

Product Type:	Expression Plasmids
Product Name:	PLK2 (NM_006622) Human Tagged ORF Clone
Tag:	TurboGFP
Symbol:	PLK2
Synonyms:	hPlk2; hSNK; SNK
Mammalian Cell Selection:	Neomycin
Vector:	pCMV6-AC-GFP (PS100010)
E. coli Selection:	Ampicillin (100 ug/mL)



[View online »](#)

ORF Nucleotide Sequence:

>RG202499 representing NM_006622
 Red=Cloning site Blue=ORF Green=Tags(s)

TTTTGTAATACGACTCACTATAGGGCGGCCGGGAATTCGTCGACTGGATCCGGTACCGAGGAGATCTGCC
 GCC**CGGATCGCC**

ATGGAGCTTTTGGGACTATCACCTACCAGCCAGCCGCCAGCACAAAATGTGCGAGCAGGCGCTGGGCA
 AGGGTTGCGGAGCAGACTCGAAGAAGAAGCGGCCGCCGACGCCCCCGAGGAATCGCAGCCACCTCAGTC
 CCAGGCGCAAGTGCCCCGGCGGCCCTCACCACCATCACCACCATTTCGCACTCGGGGCCGGAGATCTCG
 CGGATTATCGTCGACCCACGACTGGGAAGCGCTACTGCCGGGGCAAAGTCTGGGAAAGGGTGGCTTTG
 CAAAATGTTACGAGATGACAGATTTGACAAATAACAAAGTCTACGCCGAAAAATTTCTCCTCACAGCAG
 AGTAGCTAAACCTCATCAAAGGGAAAAGATTGACAAAGAAATAGAGCTTCACAGAATTTTCATCATAAG
 CATGTAGTGCAGTTTTACCCTACTTCGAGGACAAAGAAAACATTTACATTTCTTGAATACTGCAGTA
 GAAGGTCAATGGCTCATATTTTAAAGCAAGAAAGGTGTTGACAGAGCCAGAAGTTCGATACTACCTCAG
 GCAGATTGTGCTGGACTGAAATACCTTCATGAACAAGAAATCTTGCACAGAGATCTCAAACCTAGGGAAC
 TTTTTTAAATGAAGCCATGGAACAAAAGTTGGGGACTTCGGTCTGGCAGCCAGGCTAGAACCCCTGG
 AACACAGAAGGAGAACGATATGTGGTACCCAAATTTATCTCTCTCTCTCTCTCTCTCTCTCTCTCTCTCT
 TGGCTGTGAATCAGACATTTGGGCCCTGGGCTGTGAATGTATACAATGTTACTAGGGAGGCCCCCATTT
 GAAACTACAAATCTCAAAGAACTTATAGGTGCATAAGGGAAGCAAGGTATACAATGCCGTCCTCATTGC
 TGGCTCCTGCCAAGCACTTAATTGCTAGTATGTTGTCCAAAAACCCAGAGGATCGTCCAGTTTGGATGA
 CATCATTGCAGATGACTTTTTTTGACAGGGCTTCACTCCGGACAGACTGTCTTCTAGCTGTTGTCATACA
 GTTCCAGATTTCCACTTATCAAGCCAGCTAAGAATTTCTTTAAGAAAGCAGCTGCTGCTTTTTTGGTG
 GCAAAAAAGACAAAGCAAGATATATTGACACACATAATAGAGTGTCTAAGAAGATGAAGACATCTACAA
 GCTTAGGCATGATTTGAAAAAGACTTCAATAACTCAGCAACCCAGCAAACACAGGACAGATGAGGAGCTC
 CAGCCACCTACCACCACAGTTGCCAGGTCTGGAACACCCGCAAGTAAAAACAAGCAGCAGATTGGGGATG
 CTATTCGGATGATAGTCAGAGGGACTCTTGGCAGCTGTAGCAGCAGCAGTGAATGCCTTGAAGACAGTAC
 CATGGGAAGTGTGACAGACACAGTGGCAAGGGTCTTCGGGGATGTCTGGAAAACATGCCGGAAGCTGAT
 TGCATTCCCAAAGAGCAGCTGAGCACATCATTTCAGTGGGTACCAAATGGGTTGATTACTCTAACAAAT
 ATGGCTTTGGGTACCAGCTCTCAGACCACACCGTCCGGTGCCTTTTCAACAATGGTGTCTACATGAGCCT
 CCTTCCAGACAAAAAACAGTTCCTACTATTACGCAGAGCTTGGCCAATGCTCAGTTTTCCAGCAACAGAT
 GCTCCTGAGCAATTTATTAGTCAAGTGACGGTGTGAAATACTTTTCTCATTACATGGAGGAGAACCTCA
 TGGATGGTGGAGATCTGCCTAGTGTACTGATATTCGAAGACCTCGGCTCTACCTCCTCAGTGGCTAAA
 ATCTGATAAGGCCCTAATGATGCTCTTAAATGATGGCACCTTTCAGGTGAATTTCTACCATGATCATAACA
 AAAATCATCATCTGTAGCCAAAATGAAGAATACCTTCTCACCTACATCAATGAGGATAGGATATCTACAA
 CTTTCAGGCTGACAACCTGCTGATGTCTGGCTGTTTCATCAGAATAAAAAATCGAATGGAATATGCCCT
 GAACATGCTCTTACAAAGATGTAAC

ACGCGTACGCGGCCGCTCGAG - GFP Tag - GTTTAA

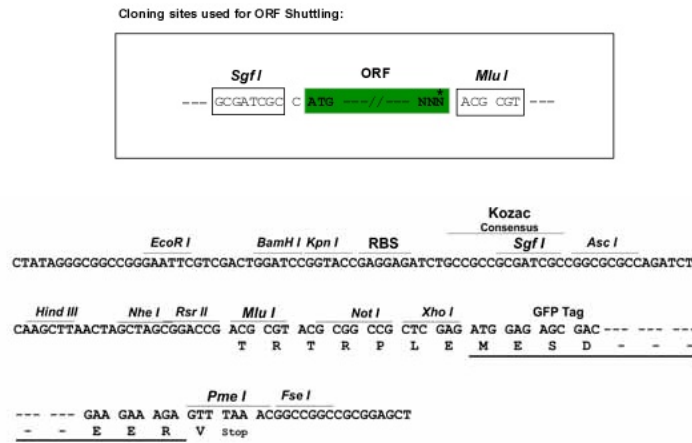
Protein Sequence: >RG202499 representing NM_006622
 Red=Cloning site Green=Tags(s)

MELLRTITYQPAASTKMCEQALGKGCADSKKKRPPQPPEESQPPQSQAQVPPAAPHHHHHSHSGPEIS
 RIIVDPTTGKRYCRGKVLGKGGFAKCYEMTDLTNNKVYAAKIIPHSRVAKPHQREKIDKEIELHRILHKK
 HVVQFYHYFEDKENIYILLEYSRRSMAILKARKVLTEPEVRYLRQIVSGLKYLHEQEILHRDLKLG
 FFINEAMELVGDFGLAARLEPLEHRRRTICGTPNYLSPEVLNKQGHGCESDI WALGCVMTMLLGRPPF
 ETTNLKETYRCIREARYTMPSSLLAPAKHLIASMLSKNPEDRPSLDDIIRHDFFLQGFTPDRLSSSCCHT
 VPDFHLS SPAKNFFKAAAALFGGKDKARYIDTHNRVSKEDEDIYKLRHDLKKT SITQQPSKHRTDEEL
 QPPTTTVARSGT PAVENKQIGDAIRMIVRGTLGSCSSSECLE DSTMG SVADTVARVLRGLENMPEAD
 CIPKEQLSTSFQVWTKWVDYSNKYGFYQLSDHTVGVLFNNGAHMSLLPDKKTVHYAELGQCSVFPATD
 APEQFISQVTVLKYF SHYMEENLMDGGDLPSVTDIRRPRLYLLQWLKSDKALMMLFNDGTFQVNFYHDHT
 KIIICSQNEEYLLTYINEDRISTTFRLLTLLMSGCSSELKNRMEYALNMLLQRCN

TRTRPLE - GFP Tag - V

Restriction Sites: SgfI-MluI

Cloning Scheme:

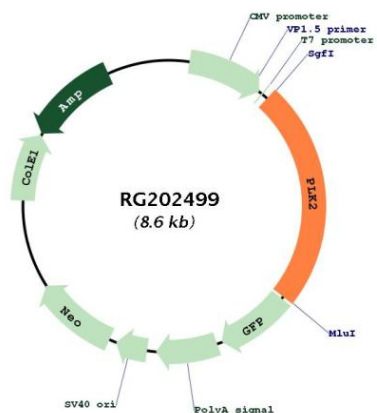


ACCN: NM_006622

ORF Size: 2055 bp

OTI Disclaimer:	<p>Due to the inherent nature of this plasmid, standard methods to replicate additional amounts of DNA in E. coli are highly likely to result in mutations and/or rearrangements. Therefore, OriGene does not guarantee the capability to replicate this plasmid DNA. Additional amounts of DNA can be purchased from OriGene with batch-specific, full-sequence verification at a reduced cost. Please contact our customer care team at custsupport@origene.com or by calling 301.340.3188 option 3 for pricing and delivery.</p> <p>The molecular sequence of this clone aligns with the gene accession number as a point of reference only. However, individual transcript sequences of the same gene can differ through naturally occurring variations (e.g. polymorphisms), each with its own valid existence. This clone is substantially in agreement with the reference, but a complete review of all prevailing variants is recommended prior to use. More info</p>
OTI Annotation:	<p>This clone was engineered to express the complete ORF with an expression tag. Expression varies depending on the nature of the gene.</p>
Components:	<p>The ORF clone is ion-exchange column purified and shipped in a 2D barcoded Matrix tube containing 10ug of transfection-ready, dried plasmid DNA (reconstitute with 100 ul of water).</p>
Reconstitution Method:	<ol style="list-style-type: none">1. Centrifuge at 5,000xg for 5min.2. Carefully open the tube and add 100ul of sterile water to dissolve the DNA.3. Close the tube and incubate for 10 minutes at room temperature.4. Briefly vortex the tube and then do a quick spin (less than 5000xg) to concentrate the liquid at the bottom.5. Store the suspended plasmid at -20°C. The DNA is stable for at least one year from date of shipping when stored at -20°C.
RefSeq:	<p>NM_006622.1, NP_006613.1</p>
RefSeq Size:	<p>2972 bp</p>
RefSeq ORF:	<p>2058 bp</p>
Locus ID:	<p>10769</p>
UniProt ID:	<p>Q9NYY3</p>
Cytogenetics:	<p>5q11.2</p>
Domains:	<p>pkinase, POLO_box, TyrKc, S_TKc</p>
Protein Families:	<p>Druggable Genome, Protein Kinase</p>
Gene Summary:	<p>The protein encoded by this gene is a member of the polo family of serine/threonine protein kinases that have a role in normal cell division. This gene is most abundantly expressed in testis, spleen and fetal tissues, and its expression is inducible by serum, suggesting that it may also play an important role in cells undergoing rapid cell division. Alternatively spliced transcript variants encoding different isoforms have been found for this gene. [provided by RefSeq, Nov 2011]</p>

Product images:



Circular map for RG202499