

Product datasheet for **RG202496**

ZNF43 (NM_003423) Human Tagged ORF Clone

Product data:

| | |
|---------------------------|--|
| Product Type: | Expression Plasmids |
| Product Name: | ZNF43 (NM_003423) Human Tagged ORF Clone |
| Tag: | TurboGFP |
| Symbol: | ZNF43 |
| Synonyms: | HTF6; KOX27; ZNF39L1 |
| Mammalian Cell Selection: | Neomycin |
| Vector: | pCMV6-AC-GFP (PS100010) |
| E. coli Selection: | Ampicillin (100 ug/mL) |



[View online »](#)

ORF Nucleotide
Sequence:

>RG202496 representing NM_003423
Red=Cloning site Blue=ORF Green=Tags(s)

TTTTGTAATACGACTCACTATAGGGCGGCCGGGAATTCGTGCGACTGGATCCGGTACCGAGGAGATCTGCC
GCC**CGCATCGCC**

ATGGGACCATTGACATTTATGGATGTGGCCATAGAATTCTGTCTGGAGGAGTGGCAATGCCTGGACATTG
CACAGCAGAATTTATATAGGAATGTGATGTTAGAGAACTACAGAAACCTGGTCTTCTGGGTATTGCTGT
CTCTAAGCCAGACCTGATCACCTGTCTGGAGCAAGAAAAAGAGCCTTGGGAGCCTATGAGGAGACATGAA
ATGGTAGCCAAACCCAGTTATGTGTTCTATTTACCCAAGACTTTTGGCCAGAGCAGCATATAAAAG
ATCCTTTCCAAAAAGCGACACTGAGAAGATATAAAAAGTGAACATAAAAAATGTACATTTAAAAAAGA
CCATAAAAGTGTGGATGAGTGAAGGTGCACAGAGGAGTTATAATGGATTTAACCAATGTTTGCCAGCT
ACCCAGAGCAAAATATTTCTATTTGATAAATGTGTGAAAGCCTTTCATAAATTTCAAATCAAACAGAC
ATAAGATAAGCCATACTGAAAAAAACTTTTCAAATGCAAAGAATGTGGCAAATCATTTTGCATGCTTCC
ACATCTAGCTCAACATAAAATAATTCATACCAGAGTGAATTTCTGCAAATGTGAAAAATGTGAAAAAGCT
TTTAAGTCCCTCAATCATCACTAAACATAAGAGAATTAATACTGGAGAGAAACCTACACATGTGAAG
AATGTGGCAAAGTCTTTAATTGGTCTCACGCCTTACTACACATAAAAAAATTATACTAGATACAACT
CTACAAATGTGAAGAATGTGGCAAAGCTTTTAAACAAGTCTCAATCCTTACTACCCATAAGATAATTCGC
ACTGGAGAGAAATTTACAAATGTAAAGAATGTGCCAAAGCTTTTAAACCAATCCTCAAACCTTACTGAAC
ATAAGAAAATTCATCCTGGAGAGAAACCTTACAAATGTGAAGAATGTGGCAAAGCCTTTAAGTGGCCCTC
AACTCTTACTAAACATAAGAGAATTCATCTGGAGAGAAACCTACACATGTGAAGAATGTGGCAAAGCC
TTTAACCAAGTTCCAAACCTTACTACACATAAGAGAATCCATACTGCAGAGAAAATTCATAAATGTACAG
AATGTGGTGAAGCTTTTAGCCGGTCTCAAACCTTACTAAACATAAGAAAATTCATACTGAAAAGAAACC
CTACAAATGTGAAGAATGTGGCAAAGCTTTTAAAGTGGTCTCAAAGCTTACTGAACATAAGTTAACTCAT
ACTGGAGAGAAACCTACAAATGTGAAGAATGTGGCAAAGCCTTTAAGTGGCCCTCAAACCTTACTAAAC
ATAACAGAATTCATACTGGAGAGAAACCTACAAATGTGAAGTATGTGGCAAAGCCTTTAACCAAGTCTC
AAACCTTACTACACATAAGAGAATTCATCTGCAGAAAAACCGTACAAATGTGAAGAATGTGGCAAAGCT
TTTAGCCGGTCTCAAACCTTACTAAACATAAGAAAATTCACATTGAAAAGAAACCTACAAATGTGAAG
AATGTGGCAAAGCTTTTAAAGTGGTCTCAAAGCTTACTGAACATAAGATAACTCATACTGGAGAGAAACC
CTACAAATGTGAAGAATGTGGCAAAGCTTTTAAACATTTCTCAATCCTTACCAAACATAAGAGGATTCAT
ACTGGAGAGAAACCTACAAGTGTGAAGAATGTGGCAAAGCTTTTACCAATCCTCAAACCTTACTACAC
ATAAGAAAATTCATACTGGAGAGAAATTCACAAATGTGAAGAATGTGGCAAAGCTTTTACCAATCCTC
AAACCTTACTACACATAAAAAAATTCATACTGGAGGAAAACCTACAAATGTGAAGAATGTGGCAAAGCT
TTTAACCAAGTTCCAACTTACTAAACATAAGATAATTCACACTGAGGAGAAACCTACAAATGTGAAG
AATGTGGCAAAGCCTTTAAGTGGTCTCAAACCTTACTAAACATAAGATAATTCATACTGGAGAGAAACC
CTACAAATGTGAAGAATGTGGCAAAGCTTTTAACTGTCTCAACCTTTCTACACATAAGATTATTCAT
ACTGGAGAGAAACCTACAAATGTGAAAAATGTGGCAAAGCTTTTAAACGATCCTCAAACCTTATTGAAC
ATAAGAAAATTCATACTGGAGAGCAACCTACAAATGTGAAGAATGTGGCAAAGCATTAACTATTCCTC
ACACCTTAATACACATAAGAGAATTCATACTAAAGAGCAACCTACAAATGTAAGAATGTGGCAAAGCT
TTCAACCAATATTCAAACCTTACTACACATAACAAAATTCATACTGGAGAGAAACTACAAACCTGAAG
ATGTGACAGTGATTTTGACAACCTCAAACCTTTTCAAACATAAAA

ACGCGTACGCGGCCGCTCGAG - GFP Tag - GTTTAA

Protein Sequence: >RG202496 representing NM_003423
Red=Cloning site Green=Tags(s)

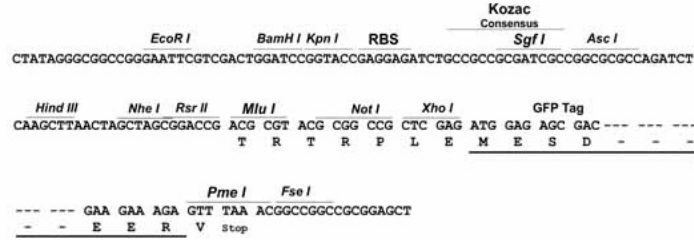
MGPLTFMDVAIEFCLLEEWQCLDIAQQNL YRNVMLENYRNLVFLGIAVSKPDLITCLEQEKEPWPMRRHE
MVAKPPVMCSHFTQDFWPEQHIKDPFQKATLRRYKNCEHKNVHLKGDHKSVDCEKVHRRGGYNGFNQCLPA
TQSKI FLFDKCVKAFHKFSNSNRHKISHTEKLFKCKEKGKSFCLPHLAQHKKI IHTRVNFCCKEKGKA
FNCPSIIITKHKRIHTGEKPYTCEEKGKVFNWSSRLTTHKKNYTRYKLYKCEEKGKAFNKSSILTTHKIIIR
TGEKFKYCKECAFNFQSSNLTEHKKIHPGKPYKCEEKGKAFNWPSTLTTHKRIHTGEKPYTCEEKGKA
FNQFSNLTTHKRIHTAEKFKCTEAGEAFSRSSNLTKHKKIHTKPKPYKCEEKGKAFKWSKLTTEHKLTH
TGEKPYKCEEKGKAFNWPSTLTTHKRIHTGEKPYKCEVCGKAFNFQSNLTTHKRIHTAEKPYKCEEKGKA
FSRSSNLTKHKKIHTKPKPYKCEEKGKAFKWSKLTTEHKTHTGEKPYKCEEKGKAFNHFSILTTHKRIHT
TGEKPYKCEEKGKAFNWPSTLTTHKRIHTGEKPYKCEEKGKAFNWPSTLTTHKRIHTAEKPYKCEEKGKA
FNQFSNLTKHKKIHTKPKPYKCEEKGKAFKWSKLTTEHKTHTGEKPYKCEEKGKAFNHFSILTTHKRIHT
TGEKPYKCEEKGKAFNWPSTLTTHKRIHTGEKPYKCEEKGKAFNWPSTLTTHKRIHTAEKPYKCEEKGKA
FNQFSNLTKHKKIHTKPKPYKCEEKGKAFKWSKLTTEHKTHTGEKPYKCEEKGKAFKLSSTLSTHKIIH
TGEKPYKCEEKGKAFNWPSTLTTHKRIHTGEKPYKCEEKGKAFNWPSTLTTHKRIHTAEKPYKCEEKGKA
FNQFSNLTKHKKIHTKPKPYKCEEKGKAFKWSKLTTEHKTHTGEKPYKCEEKGKAFNWPSTLTTHKRIHT

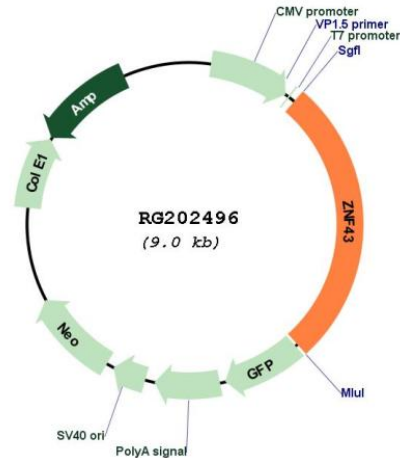
TRTRPLE - GFP Tag - V

Restriction Sites: Sgfl-MluI

Cloning Scheme:

Cloning sites used for ORF Shutting:



Plasmid Map:


ACCN: NM_003423

ORF Size: 2427 bp

OTI Disclaimer: Due to the inherent nature of this plasmid, standard methods to replicate additional amounts of DNA in *E. coli* are highly likely to result in mutations and/or rearrangements. Therefore, OriGene does not guarantee the capability to replicate this plasmid DNA. Additional amounts of DNA can be purchased from OriGene with batch-specific, full-sequence verification at a reduced cost. Please contact our customer care team at custsupport@origene.com or by calling 301.340.3188 option 3 for pricing and delivery.

The molecular sequence of this clone aligns with the gene accession number as a point of reference only. However, individual transcript sequences of the same gene can differ through naturally occurring variations (e.g. polymorphisms), each with its own valid existence. This clone is substantially in agreement with the reference, but a complete review of all prevailing variants is recommended prior to use. [More info](#)

OTI Annotation: This clone was engineered to express the complete ORF with an expression tag. Expression varies depending on the nature of the gene.

Components: The ORF clone is ion-exchange column purified and shipped in a 2D barcoded Matrix tube containing 10ug of transfection-ready, dried plasmid DNA (reconstitute with 100 ul of water).

- Reconstitution Method:**
1. Centrifuge at 5,000xg for 5min.
 2. Carefully open the tube and add 100ul of sterile water to dissolve the DNA.
 3. Close the tube and incubate for 10 minutes at room temperature.
 4. Briefly vortex the tube and then do a quick spin (less than 5000xg) to concentrate the liquid at the bottom.
 5. Store the suspended plasmid at -20°C. The DNA is stable for at least one year from date of shipping when stored at -20°C.

RefSeq: [NM_003423.4](#)

RefSeq Size: 5258 bp

RefSeq ORF: 2430 bp

Locus ID: 7594

UniProt ID: [P17038](#)

Cytogenetics: 19p12

Domains: KRAB, zf-C2H2

Protein Families: Transcription Factors

Gene Summary: This gene belongs to the C2H2-type zinc finger gene family. The zinc finger proteins are involved in gene regulation and development, and are quite conserved throughout evolution. Like this gene product, a third of the zinc finger proteins containing C2H2 fingers also contain the KRAB domain, which has been found to be involved in protein-protein interactions. [provided by RefSeq, Jul 2008]