

Product datasheet for **RG202486**

EHD4 (NM_139265) Human Tagged ORF Clone

Product data:

Product Type:	Expression Plasmids
Product Name:	EHD4 (NM_139265) Human Tagged ORF Clone
Tag:	TurboGFP
Symbol:	EHD4
Synonyms:	PAST4
Mammalian Cell Selection:	Neomycin
Vector:	pCMV6-AC-GFP (PS100010)
E. coli Selection:	Ampicillin (100 ug/mL)



[View online »](#)

ORF Nucleotide Sequence:

>RG202486 representing NM_139265
 Red=Cloning site Blue=ORF Green=Tags(s)

TTTTGTAATACGACTCACTATAGGGCGGCCGGGAATTCGTCGACTGGATCCGGTACCGAGGAGATCTGCC
 GCC**CGCATCGCC**

ATGTT**CAGCTGGATGGGGCGGCAGGCGGGCGGGCGCAACCGCTGGCGGCGGGACCGGTTGCAGACGG**
 TGACGGGCGGGCTGCGCTCGCTCTACCTGCGCAAGGTGCTGCCGCTGGAGGAGGGTACCGCTTCCACGA
 GTTCCACTCGCCTGCGCTGGAGGACGCCGACTTCGAGAACAAGCCATGATCCTGCTGGTGGCCAGTAC
 AGCACC**GGCAAGACCACCTTCATCAGATACCTACTGGAGCAGGATTTCCAGGCATGAGGATTGGTCCGG**
 AGCCCACACAGACTCCTTCATCGCCGTGATGTATGGAGAGACTGAGGGCAGCACCCAGGGAATGCTTT
 AGTCGTGGACCCCAAAAAGCCGTTTAGAAAGCTCAGTCGCTTTGGAAACGCTTCTCCTGAATCGATT**CATG**
 TGCTCACAGCTCCCAATCAGGTCTGAAGAGCATCAGCGTCATCGACAGCCCCGGCATCCTTTCTGGGG
 AGAAGCAGCGCATCAGCCGAGGCTATGACTTCTGCCAGGTCTGCAGTGGTTTCCGAGAGGGTGGACAG
 GATCATCTGCTCTTTGACGCTCACAAGCTGGACATCTCAGATGAATTCTCAGAGGCCATCAAGGCCTTC
 CGGGGCCAGGACGACAAGATCCGTGTCGTGCTGAATAAGGCCACCAAGTGGACACGCAGCAGCTGATGC
 GGGTCTACGGGGCCCTCATGTGGTCCCTAGGCAAGGTCATCAACACGCCCGAGGACTGCGCGTCTACAT
 TGGCTCCTTCTGGGCGCAGCCCCTGCAGAACACGGACAACCGCCGGCTCTTCGAGGCTGAGGCCAGGAC
 CTCTTCAGAGACATCCAGAGCCTCCCCAGAAGGCAGCGGTGCGCAAGCTCAACGACCTCATCAAGCGAG
 CGAGGCTGGCCAAGGTGCATGCCTACATCATCAGCTACCTGAAGAAGGAGATGCCAAGTGTATTTGGAAA
 GGAAAACAAGAAGAGAGAGCTTATCAGCAGGCTACCGAAATCTACATTCAGCTACAGCGAGAATACCAG
 ATTTCTGCAGGGGACTTCCCTGAGGTCAAGGCTATGCAGGAACAGCTTGAAGACTATGACTTCACCAAAT
 TCCACTCGCTGAAGCCCAAGCTGATCGAGGCAGTGGACAACATGCTGAGCAACAAGATCTCGCCCCTCAT
 GAACCTCATCAGCCAGGAGGAGACGAGCACGCCACGCAGCTGGTGCAGGGCGGCCCTTCGATGGCACC
 ACCGAGGGCCCTTCAACCAGGGCTACGGGAGGGTGCCAAGGAGGGCGCCGACGAGGAGGAGTGGGTGCG
 TGGCCAAAGACAAGCCCGTCTACGACGAGCTCTTCTACACTCTGTGCGCCATCAATGGCAAGATATCAGG
 TGTCAACGCCAAGAAGGAGATGGTGACCTCAAGCTGCCCAACAGCGTCTGGGCAAGATCTGGAAGCTG
 GCCGACTGCGACTGCGACGGCATGCTTGATGAGGAGGAGTTCGCGCTGGCCAAGCACCTCATCAAGATCA
 AGCTCGACGGCTACGAGCTGCCAGCAGCTGCCCCCCACCTCGTGCCCCCTCGCACAGGAAGTCCCT
 GCCCAAGGCCGAC

ACGCGTACGCGGCCGCTCGAG - GFP Tag - GTTTAA

Protein Sequence:

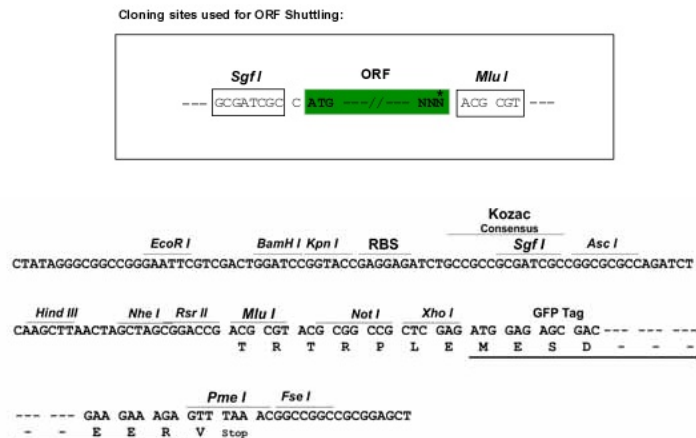
>RG202486 representing NM_139265
 Red=Cloning site Green=Tags(s)

MFSWMGRQAGGRERAGGADAVQTVTGGLRSLYLRLKVLPLEEAYRFHEFHSPALEDADFENKPMILLVGQY
 STGKTTFIRYLLEQDFPGMRIGPEPTTDSFIIVMYGETEGSTPGNALVVDPKKPFRLSRFGNAFLNRFM
 CSQLPNQVLKSIIVIDSPGILSGEKQRISRGYDFCQVLQWFAERVDRIILLFDAHKLDISDEFSEAIKAF
 RGQDDKIRVVLNKADQVDTQQLMRVYGALMWSLGKVINTEPEVLRVYIGSFWAQLQNTDNRRLEFAEAQD
 LFRDIQSLPQKA AVRKLNDLIKRRARLAKVHAYIISYLKEMPSVFGKENKKRELISRLPEIYIQLQREYQ
 ISAGDFPEVKAMQEQLENYDFTKFHSLKPKLIEAVDNMLSNKISPLMNLISQEETSTPTQLVQGGAFDGT
 TEGPFNQYGGEGAKEGADEEWWVAKDKPVYDELFTYTLSPINGKISGVNAKKEMVTSKLPNSVLGKIWKL
 ADCDCDGMLEEEFALAKHLIKIKLDGYELPSSLPPLVPPSHRKS LPKAD

TRTRPLE - GFP Tag - V

Restriction Sites:

Sgfl-MluI

Cloning Scheme:


ACCN: NM_139265

ORF Size: 1623 bp

OTI Disclaimer: The molecular sequence of this clone aligns with the gene accession number as a point of reference only. However, individual transcript sequences of the same gene can differ through naturally occurring variations (e.g. polymorphisms), each with its own valid existence. This clone is substantially in agreement with the reference, but a complete review of all prevailing variants is recommended prior to use. [More info](#)

OTI Annotation: This clone was engineered to express the complete ORF with an expression tag. Expression varies depending on the nature of the gene.

Components: The ORF clone is ion-exchange column purified and shipped in a 2D barcoded Matrix tube containing 10ug of transfection-ready, dried plasmid DNA (reconstitute with 100 ul of water).

Reconstitution Method:

1. Centrifuge at 5,000xg for 5min.
2. Carefully open the tube and add 100ul of sterile water to dissolve the DNA.
3. Close the tube and incubate for 10 minutes at room temperature.
4. Briefly vortex the tube and then do a quick spin (less than 5000xg) to concentrate the liquid at the bottom.
5. Store the suspended plasmid at -20°C. The DNA is stable for at least one year from date of shipping when stored at -20°C.

RefSeq: [NM_139265.2](#), [NP_644670.1](#)

RefSeq Size: 2941 bp

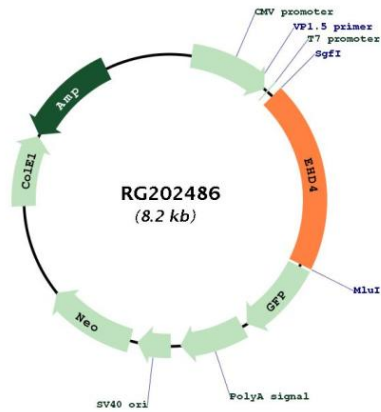
RefSeq ORF: 1626 bp

Locus ID: 30844

UniProt ID: [Q9H223](#)

Cytogenetics: 15q15.1
Domains: EH
Protein Pathways: Endocytosis
Gene Summary: ATP- and membrane-binding protein that probably controls membrane reorganization/tubulation upon ATP hydrolysis. Plays a role in early endosomal transport. [UniProtKB/Swiss-Prot Function]

Product images:



Circular map for RG202486