

Product datasheet for **RG202435**

CSNK2A2 (NM_001896) Human Tagged ORF Clone

Product data:

Product Type:	Expression Plasmids
Product Name:	CSNK2A2 (NM_001896) Human Tagged ORF Clone
Tag:	TurboGFP
Symbol:	CSNK2A2
Synonyms:	CK2A2; CK2alpha'; CSNK2A1
Mammalian Cell Selection:	Neomycin
Vector:	pCMV6-AC-GFP (PS100010)
E. coli Selection:	Ampicillin (100 ug/mL)
ORF Nucleotide Sequence:	>RG202435 representing NM_001896 Red=Cloning site Blue=ORF Green=Tags(s)

TTTTGTAATACGACTCACTATAGGGCGGCCGGAATTCGTCGACTGGATCCGGTACCGAGGAGATCTGCC
GCC**CGATCGCC**

ATGCCCGCCCGCCGCGGGCAGCAGGGCCCGGGTCTACGCCAGGTGAACAGTCTGAGGAGCCGCGAGT
ACTGGGACTACGAGGCTCACGTCCCGAGCTGGGGTAATCAAGATGATTACCAACTGGTTCGAAAACCTTGG
TCGGGGAAAATATAGTGAAGTATTTGAGGCCATTAATATCACCAACAATGAGAGAGTGGTTGAAAAATC
CTGAAGCCAGTGAAGAAAAAGAAGATAAAACGAGAGGTTAAGATTCTGGAGAACCCTCGTGGTGAACAA
ATATCATTAAAGCTGATTGACACTGTAAAGACCCCGTGTCAAAGACACCAGCTTTGGTATTTGAATATAT
CAATAATACAGATTTTAAGCAACTCTACCAGATCCTGACAGACTTTGATATCCGGTTTTATATGTATGAA
CTACTTAAAGCTCTGGATTACTGCCACAGCAAGGGAATCATGCACAGGGATGTGAAACCTCACAATGTCA
TGATAGATCACCAACAGAAAAAGCTGCGACTGATAGATTGGGGTCTGGCAGAATTCTATCATCTCTGCTCA
GGAGTACAATGTTCTGTAGCCTCAAGGTACTTCAAGGGACCAGAGCTCCTCGTGGACTATCAGATGTAT
GATTATAGCTTGGACATGTGGAGTTTGGGCTGTATGTTAGCAAGCATGATCTTTCGAAGGGAACCTTCT
TCCATGGACAGGACAACATGACCAGCTTGTTCGATTGCCAAGGTTCTGGGTACAGAAGAACTGTATGG
GTATCTGAAGAAGTATCACATAGACCTAGATCCACACTTCAACGATATCTGGGACAACATTACCGGAAA
CGCTGGGAAAACCTTATCCATAGTGAGAACAGACACCTTGTGAGCCCTGAGGCCCTAGATCTTCTGGACA
AACTTCTGCGATACGACCATCAACAGAGACTGACTGCCAAAGAGGCCATGGAGCACCCATACTTCTACCC
TGTGGTGAAGGAGCAGTCCAGCCTTGTGCAGACAATGCTGTGCTTTCCAGTGGTCTCACGGCAGCACGA

ACGCGTACGCGGCCGCTCGAG - GFP Tag - GTTTAA



[View online »](#)

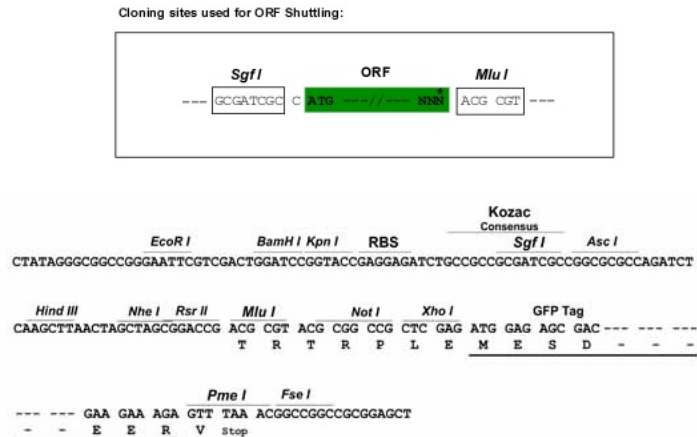
Protein Sequence: >RG202435 representing NM_001896
 Red=Cloning site Green=Tags(s)

MPGPAAGSRARVYAEVNSLRSREYWDYEAHVPSWGNQDDYQLVRKLGKGYSEVFEAINITNNERVVVKI
 LKPVKKKIKREVKILENLRGGTNIKLIKIDTVKDPVSKTPALVFEYINNTDFKQLYQILTDFDIRFYMYE
 LLKALDYCHSKGIMHRDVKPHNVMIDHQKQLRLIDWGLAEFYHPAQEYNVRVASRYFKGPELLVDYQMY
 DYSLDMWSLGCMLASMIFFRPEFFHGDNDYDQLVRIAKVLGTEELYGYLKKYHIDLDPHFNDILGQHSRK
 RWENFIHSENRHLVSPEALDLLDKLLRYDHQRLTAKEAMEHPYFYPVVKESQSPCADNAVLSGLTAAR

TRTRPLE - GFP Tag - V

Restriction Sites: SgfI-MluI

Cloning Scheme:



ACCN: NM_001896

ORF Size: 1050 bp

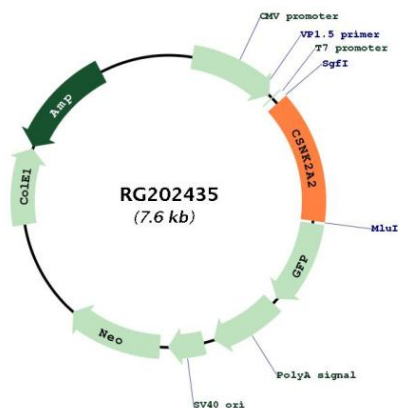
OTI Disclaimer: The molecular sequence of this clone aligns with the gene accession number as a point of reference only. However, individual transcript sequences of the same gene can differ through naturally occurring variations (e.g. polymorphisms), each with its own valid existence. This clone is substantially in agreement with the reference, but a complete review of all prevailing variants is recommended prior to use. [More info](#)

OTI Annotation: This clone was engineered to express the complete ORF with an expression tag. Expression varies depending on the nature of the gene.

Components: The ORF clone is ion-exchange column purified and shipped in a 2D barcoded Matrix tube containing 10ug of transfection-ready, dried plasmid DNA (reconstitute with 100 ul of water).

Reconstitution Method:	<ol style="list-style-type: none">1. Centrifuge at 5,000xg for 5min.2. Carefully open the tube and add 100ul of sterile water to dissolve the DNA.3. Close the tube and incubate for 10 minutes at room temperature.4. Briefly vortex the tube and then do a quick spin (less than 5000xg) to concentrate the liquid at the bottom.5. Store the suspended plasmid at -20°C. The DNA is stable for at least one year from date of shipping when stored at -20°C.
RefSeq:	NM_001896.4
RefSeq Size:	1674 bp
RefSeq ORF:	1053 bp
Locus ID:	1459
UniProt ID:	P19784
Cytogenetics:	16q21
Domains:	pkinase, TyrKc, S_TKc
Protein Families:	Druggable Genome, Protein Kinase
Protein Pathways:	Adherens junction, Tight junction, Wnt signaling pathway
Gene Summary:	<p>This gene encodes the alpha', or alpha 2, catalytic subunit of the protein kinase enzyme, casein kinase 2 (CK2). Casein kinase 2 is a serine/threonine protein kinase that phosphorylates acidic proteins such as casein. It is involved in various cellular processes, including cell cycle control, apoptosis, and circadian rhythms. This heterotetrameric kinase includes two catalytic subunits, either alpha or alpha', and two regulatory beta subunits. The closely related gene paralog encoding the alpha, or alpha 1 subunit (CSNK2A1, Gene ID: 1457) is found on chromosome 20. An intronic variant in this gene (alpha 2) may be associated with leukocyte telomere length in a South Asian population. A related transcribed pseudogene is found on chromosome 11. [provided by RefSeq, Aug 2017]</p>

Product images:



Circular map for RG202435