

## Product datasheet for **RG202393**

### ABHD10 (NM\_018394) Human Tagged ORF Clone

#### Product data:

Product Type:	Expression Plasmids
Product Name:	ABHD10 (NM_018394) Human Tagged ORF Clone
Tag:	TurboGFP
Symbol:	ABHD10
Mammalian Cell Selection:	Neomycin
Vector:	pCMV6-AC-GFP (PS100010)
E. coli Selection:	Ampicillin (100 ug/mL)
ORF Nucleotide Sequence:	>RG202393 representing NM_018394 Red=Cloning site Blue=ORF Green=Tags(s)

TTTTGTAATACGACTCACTATAGGGCGGCCGGAATTCGTCGACTGGATCCGGTACCGAGGAGATCTGCC  
GCC**CGATCGCC**

ATGGCGGTTGCGCGCTTGGCAGCTGTGGCGCCTGGGTACCTTGTGGAGCTGGGGCTGGGCAGCCGTCC  
CCTTCGGTCCCCACCGTGGCCTCAGCGTGTCTGCTTGCACGGATACCTCAGCGGGCCACGGTGGCTCCC  
AGCTTGTAGACAAAAGACGTCACCTCTATTCTTAATCGACCAGACCTTCCAACTGGCTTATAAGAAG  
CTAAAAGGCAAAAGTCCAGGAATTATCTCATCCCTGGCTATCTTTCTTATGAATGGTACAAAAGCGT  
TGGCGATTGAGGAGTTTGCAAATCTCTAGGTCACGCCTGCATAAGGTTTGATTACTCAGGAGTTGGAAG  
TTCAGATGGTAACTCAGAGGAAAGCACACTGGGGAAATGGAGAAAAGATGTTCTTTCTATAATTGATGAC  
TTAGCTGATGGGCCACAGATTCTTGTGGATCTAGCCTTGGAGGGTGGCTTATGCTTCATGCTGCAATTG  
CACGACCAGAGAAGGTCGTGGCTCTTATTGGTGTAGCTACAGCTGCAGATACCTTAGTGACAAAAGTTAA  
TCAGCTTCTGTTGAGCTAAAAAGGAAGTAGAGATGAAAGGTGTGTGGAGCATGCCATCAAATACTCT  
GAAGAAGGAGTTTATAACGTTTCAGTACAGTTTCATTAAGAAGCTGAACATCACTGCTTGTACATAGCC  
CAATTCCTGTGAAGTCCCCATAAGATTGCTCCATGGCATGAAGGATGACATTGTACCTTGGCATAATC  
AATGCAGGTTGCCGATCGAGTACTCAGCACAGATGTGGATGTCATCTCCGAAAACACAGTGATCACCGA  
ATGAGGGAAAAAGCAGACATTCAACTTCTGTTTACACTATTGATGACTTAATTGATAAGCTCTCAACTA  
TAGTTAAC

**ACGCGT**ACGCGGCCGCTCGAG - GFP Tag - GTTTAA



[View online »](#)

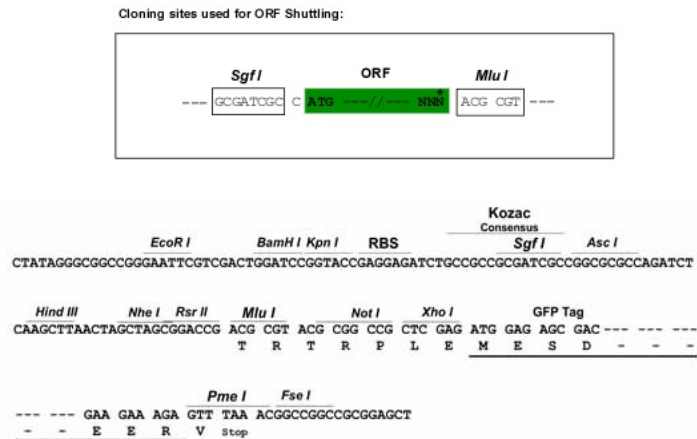
**Protein Sequence:** >RG202393 representing NM\_018394  
Red=Cloning site Green=Tags(s)

MAVARLAAVAAWVPCRSWGWAAVPFGPHRGLSVLLARIPQRAPRWLPACRQKTSLSFLNRPDLPNLAYKK  
 LKGKSPGIIFIPGYLSYMGTKALAIIEEFCKSLGHACIRFDYSGVSSDGNSEESTLGKWRKDVLSIIDD  
 LADGPQILVGSSLGGWMLHAAIARPEKVVALIGVATAADTLVTKFNQLPVELKKEVEMKGVWSMPSKYS  
 EEGVYVQYSFIIKEAEHCLLHSPIPVNCPIRLLHGMKDDIVPWHTSMQVADRVLSTDVDVILRKHS DHR  
 MREKADIQLLVYTIDDLIDKLSTIVN

TRTRPLE - GFP Tag - V

**Restriction Sites:** SgfI-MluI

**Cloning Scheme:**



**ACCN:** NM\_018394

**ORF Size:** 918 bp

**OTI Disclaimer:** The molecular sequence of this clone aligns with the gene accession number as a point of reference only. However, individual transcript sequences of the same gene can differ through naturally occurring variations (e.g. polymorphisms), each with its own valid existence. This clone is substantially in agreement with the reference, but a complete review of all prevailing variants is recommended prior to use. [More info](#)

**OTI Annotation:** This clone was engineered to express the complete ORF with an expression tag. Expression varies depending on the nature of the gene.

**Components:** The ORF clone is ion-exchange column purified and shipped in a 2D barcoded Matrix tube containing 10ug of transfection-ready, dried plasmid DNA (reconstitute with 100 ul of water).

**Reconstitution Method:**

1. Centrifuge at 5,000xg for 5min.
2. Carefully open the tube and add 100ul of sterile water to dissolve the DNA.
3. Close the tube and incubate for 10 minutes at room temperature.
4. Briefly vortex the tube and then do a quick spin (less than 5000xg) to concentrate the liquid at the bottom.
5. Store the suspended plasmid at -20°C. The DNA is stable for at least one year from date of shipping when stored at -20°C.

**RefSeq:** [NM\\_018394.4](#)

**RefSeq Size:** 2568 bp

**RefSeq ORF:** 921 bp

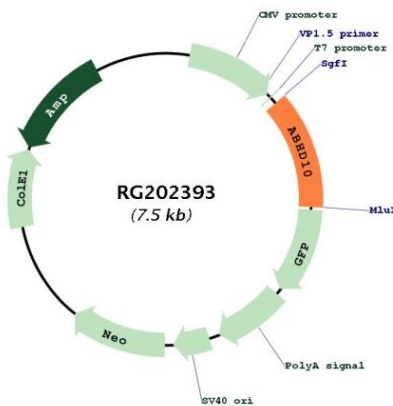
**Locus ID:** 55347

**UniProt ID:** [Q9NUJ1](#)

**Cytogenetics:** 3q13.2

**Gene Summary:** This gene encodes a mitochondrially-localized enzyme that acts in liver cells as a hydrolase. The encoded protein removes glucuronide from mycophenolic acid acyl-glucuronide. There is a pseudogene for this gene on chromosome 6. Alternative splicing results in multiple transcript variants. [provided by RefSeq, Jan 2013]

**Product images:**



Circular map for RG202393