

## Product datasheet for **RG202392**

### ARFGAP3 (NM\_014570) Human Tagged ORF Clone

#### Product data:

Product Type:	Expression Plasmids
Product Name:	ARFGAP3 (NM_014570) Human Tagged ORF Clone
Tag:	TurboGFP
Symbol:	ARFGAP3
Synonyms:	ARFGAP1
Mammalian Cell Selection:	Neomycin
Vector:	pCMV6-AC-GFP (PS100010)
E. coli Selection:	Ampicillin (100 ug/mL)



[View online »](#)

**ORF Nucleotide Sequence:**

>RG202392 representing NM\_014570  
 Red=Cloning site Blue=ORF Green=Tags(s)

TTTTGTAATACGACTCACTATAGGGCGGCCGGGAATTCGTCGACTGGATCCGGTACCGAGGAGATCTGCC  
 GCC**CGCATCGCC**

ATGGGGGACCCAGCAAGCAGGACATCTTGACCATCTTCAAGCGCCTCCGCTCGGTGCCACTAACAAAGG  
 TGTGTTTTGATTGTTGGTCCAAAAATCCAGCTGGGCAAGCATAACCTATGGAGTGTTCCTTTGCATTGA  
 TTGCTCAGGGTCCCACCGGTCACTTGGTGTCACTTGAGTTTTATTTCGATCTACAGAGTTGGATTCCAAC  
 TGGTCATGGTTTTAGTTGCGATGCATGCAAGTCGGAGGAAACGCTAGTGCATCTTCCTTTTTTTCATCAAC  
 ATGGGTGTTCCACCAATGACACCAATGCCAAGTACAACAGTCGTGCTGCTCAGCTCTATAGGGAGAAAAAT  
 CAAATCGCTCGCCTCTCAAGCAACACGGAAGCATGGCACTGATCTGTGGCTTGATAGTTGTGTGGTTCCA  
 CCTTTGCCCCCTCCACCAAGGAGGAAGATTTTTTGCCTCTCACGTTTCTCCTGAGGTGAGTGACACAG  
 CGTGGGCATCAGCAATAGCAGAACCATCTCTTTAACATCAAGGCCTGTGAAACCCTTTGGAAAAATAA  
 TGAAGGTGGACAAGGCAAGGACCAAGTGTGGAAGGTCTTAATGTACCAACAAAGGCTACTTTAGAGGTA  
 TCCTCTATCATAAAAAAGAAACCAATCAAGCTAAAAAAGGCCTTGGGGCCAAAAAGGAAGTTTGGGAG  
 CTCAGAAACTGGCAAAACACATGCTTTAATGAAATTGAAAAACAAGCTCAAGCTGCGGATAAAATGAAGGA  
 GCAGGAAGACCTGGCCAAGGTGGTATCTAAAGAAGAATCAATTGTTTCATCATTACGATTAGCCTATAAG  
 GATCTTGAAATTCAAATGAAGAAAGACGAAAAGATGAACATTAGTGGCAAAAAAATGTTGACTCAGACA  
 GACTCGGCATGGGATTTGGAAATTCAGAAAGTGTATTTTACATTCAGTGACTTCAGATATGCAGACCAT  
 AGAGCAGGAATCACCCATTATGGCAAAACCAAGAAAAAAGTATAATGATGACAGTGACGATTCAATTTT  
 ACTTCCAGCTCAAGGTACTTTGACGAGCCAGTGGAGTTAAGGAGCAGTTCTTTCTAGCTGGGATGACA  
 GTTCAGATTCCTATTGGAAAAAAGAGACCAAGATAACTGAAACAGTTCTGAAACCCACAGGCTATTC  
 AGACAGACCTACTGCTCGCCGCAAGCCAGATTATGAGCCAGTTGAAAATACAGATGAGGCCCAAGAAG  
 TTTGGCAATGTCAAGGCCATTTTCATCAGATATGATTTTGGAAAGACAATCCAGGCTGATTATGAGACCA  
 GGGCCCGCTAGAGAGGCTGTCAGCAAGTTCCTCCATAAGCTCGGCTGATCTGTTTCGAGGAGCCGAGGAA  
 GCAGCCAGCAGGGAACACAGCCTGTCCAGCGTGTGCCAACGCCCCCGACATGGCGCAGTTCAAGCAG  
 GGAGTGAGATCGGTTGCTGGAAACTCTCCGTCTTGCTAATGGAGTCGTGACTTCAATTCAGGATCGCT  
 ACGTTCT

**ACGCGTACGCGGCCGCTCGAG** - GFP Tag - GTTTAA

**Protein Sequence:**

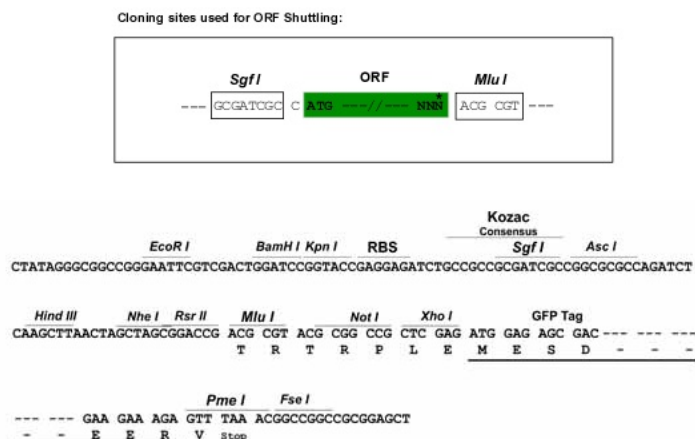
>RG202392 representing NM\_014570  
 Red=Cloning site Green=Tags(s)

MGDPSKQDILTIKRLRSVPTNKVCFDCGAKNPSWASITYGVFLCIDCSGSHRSLGVHLSFIRSTELDSN  
 WSWFQLRCMQVGGNASASSFFHQHGCSTNDTNAKYNRAAQLYREIKISLASQATRKHGTDLWLDSCVVP  
 PLSPPPKEEDFFASHVSPEVSDTAWASIAEPSSLTSRPVETTLENNEGGQEQQPSVEGLNVPTKATLEV  
 SSIKKKPNQAKKGLGAKKGSLSLGAQKLANTCFNEIEKQAADKMKEQEDLAKVVSKEESIVSSLRLAYK  
 DLEIQMKKDEKMNISGKKNVSDRLGMFGNCRSVISHSVTSDMQTIEQESPIMAKPRKYNDDSDSYF  
 TSSSRYPDEPVELRSSSFSSWDDSSDSYWKKETS KDTETVLKTTGYSDRPTARRKPDYEPVENTDEAQKK  
 FGNVKAISSDMYFGRQSQADYETRARLERLSASSISSADLFEPRKQPAGNYSLSSVLPNAPDMAQFKQ  
 GVRSVAGKLSVFANGVVTSIQDRYGS

**TRTRPLE** - GFP Tag - V

**Restriction Sites:**

Sgfl-MluI

**Cloning Scheme:**


**ACCN:** NM\_014570

**ORF Size:** 1548 bp

**OTI Disclaimer:** The molecular sequence of this clone aligns with the gene accession number as a point of reference only. However, individual transcript sequences of the same gene can differ through naturally occurring variations (e.g. polymorphisms), each with its own valid existence. This clone is substantially in agreement with the reference, but a complete review of all prevailing variants is recommended prior to use. [More info](#)

**OTI Annotation:** This clone was engineered to express the complete ORF with an expression tag. Expression varies depending on the nature of the gene.

**Components:** The ORF clone is ion-exchange column purified and shipped in a 2D barcoded Matrix tube containing 10ug of transfection-ready, dried plasmid DNA (reconstitute with 100 ul of water).

**Reconstitution Method:**

1. Centrifuge at 5,000xg for 5min.
2. Carefully open the tube and add 100ul of sterile water to dissolve the DNA.
3. Close the tube and incubate for 10 minutes at room temperature.
4. Briefly vortex the tube and then do a quick spin (less than 5000xg) to concentrate the liquid at the bottom.
5. Store the suspended plasmid at -20°C. The DNA is stable for at least one year from date of shipping when stored at -20°C.

**RefSeq:** [NM\\_014570.2](#)

**RefSeq Size:** 2725 bp

**RefSeq ORF:** 1551 bp

**Locus ID:** 26286

**UniProt ID:** [Q9NP61](#)

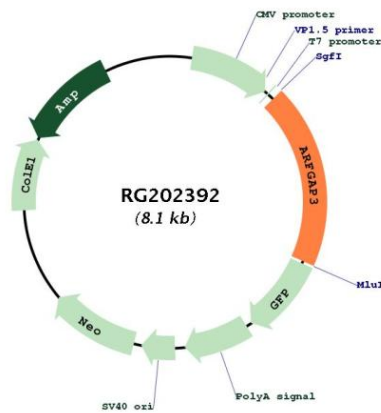
**Cytogenetics:** 22q13.2

**Domains:** ArfGap

**Protein Pathways:** Endocytosis

**Gene Summary:** The protein encoded by this gene is a GTPase-activating protein (GAP) that associates with the Golgi apparatus and regulates the early secretory pathway of proteins. The encoded protein promotes hydrolysis of ADP-ribosylation factor 1 (ARF1)-bound GTP, which is required for the dissociation of coat proteins from Golgi-derived membranes and vesicles. Dissociation of the coat proteins is a prerequisite for the fusion of these vesicles with target compartments. The activity of this protein is sensitive to phospholipids. Multiple transcript variants encoding different isoforms have been found for this gene. This gene was originally known as ARFGAP1, but that is now the name of a related but different gene. [provided by RefSeq, Nov 2008]

**Product images:**



Circular map for RG202392