

Product datasheet for **RG202383**

GLTP (NM_016433) Human Tagged ORF Clone

Product data:

Product Type: Expression Plasmids
Product Name: GLTP (NM_016433) Human Tagged ORF Clone
Tag: TurboGFP
Symbol: GLTP
Mammalian Cell Selection: Neomycin
Vector: pCMV6-AC-GFP (PS100010)
E. coli Selection: Ampicillin (100 ug/mL)
ORF Nucleotide Sequence: >RG202383 representing NM_016433
Red=Cloning site **Blue**=ORF **Green**=Tags(s)

TTTTGTAATACGACTCACTATAGGGCGGCCGGGAATTCGTCGACTGGATCCGGTACCGAGGAGATCTGCC
GCC**CGATCGCC**

ATGGCGCTGCTGGCCGAACACTTGCTGAAGCCGCTGCCCGGGACAAGCAGATCGAGACCGGGCCCTTCC
TCGAGGCGGTGTCCACCTGCCGCCCTTCTTCGATTGCCTTGGGTCCCAGTGTTACTCCCATCAAGGC
AGACATAAGCGGCAACATCACGAAAATCAAAGCTGTGTACGACACCAACCCAGCCAAGTCCGGACCCTG
CAGAACATCCTGGAGGTGAGAAAAGAAATGTATGGAGCAGAGTGGCCCAAAGTAGGGCCACACTGGCGC
TGATGTGGCTGAAAAGAGGCCTCCGCTTCATCCAGGTCTTCTCCAGAGCATCTGCCAGCGGGAGCGGGA
CGAGAACCACCCCAACCTCATCCGTGTCAACGCCACCAAGGCCTACGAGATGGCCCTCAAGAAGTACCAT
GGCTGGATCGTGCAGAAGATCTTCCAGGAGCACTGTACGCAGCACCCCTATAAGTCTGACTTCTGAAAG
CGCTCTCAAGGGGCAGAATGTTACGGAGGAGGAGTGCCTGGAGAAGATCCGCCTTCTCCTAGTCAACTA
CACGGCGACCATCGATGTCATCTACGAGATGTACACCCAGATGAACGCTGAGCTTAACAAGGTG

ACGCGTACGCGGCCGCTCGAG - GFP Tag - GTTTAA

Protein Sequence: >RG202383 representing NM_016433
Red=Cloning site **Green**=Tags(s)

MALLAEHLLKPLPADKQIETGPFLEAVSHLPPFFDCLGSPVFTPIKADISGNITKIKAVYDTNPAKFRTL
QNI LEVEKEMYGAEPKVGATLALMWLKRGLRFIQVFLQSIDGERDENHPNLIRVNATKAYEMALKKYH
GWIVQKIFQAALYAAPYKSDFLKALSKGQNVTEEECLEKIRLFLVNYTATIDVIYEMYTQMNAELNYKV

TRTRPLE - GFP Tag - V

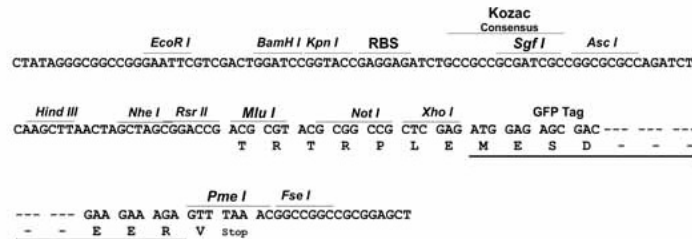
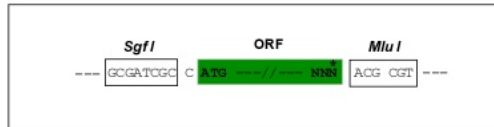
Restriction Sites: SgfI-MluI



[View online »](#)

Cloning Scheme:

Cloning sites used for ORF Shutting:


ACCN: NM_016433

ORF Size: 627 bp

OTI Disclaimer: The molecular sequence of this clone aligns with the gene accession number as a point of reference only. However, individual transcript sequences of the same gene can differ through naturally occurring variations (e.g. polymorphisms), each with its own valid existence. This clone is substantially in agreement with the reference, but a complete review of all prevailing variants is recommended prior to use. [More info](#)
OTI Annotation: This clone was engineered to express the complete ORF with an expression tag. Expression varies depending on the nature of the gene.

Components: The ORF clone is ion-exchange column purified and shipped in a 2D barcoded Matrix tube containing 10ug of transfection-ready, dried plasmid DNA (reconstitute with 100 ul of water).

Reconstitution Method:

1. Centrifuge at 5,000xg for 5min.
2. Carefully open the tube and add 100ul of sterile water to dissolve the DNA.
3. Close the tube and incubate for 10 minutes at room temperature.
4. Briefly vortex the tube and then do a quick spin (less than 5000xg) to concentrate the liquid at the bottom.
5. Store the suspended plasmid at -20°C. The DNA is stable for at least one year from date of shipping when stored at -20°C.

RefSeq: [NM_016433.4](#)
RefSeq Size: 2371 bp

RefSeq ORF: 630 bp

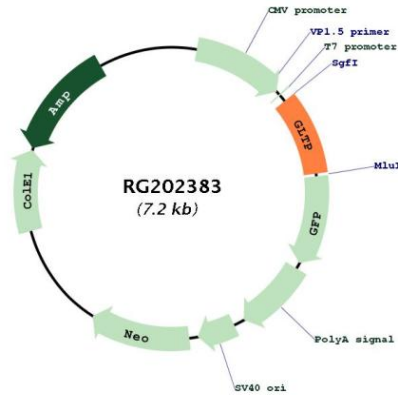
Locus ID: 51228

UniProt ID: [Q9NZZ2](#)

Cytogenetics: 12q24.11

Gene Summary: The protein encoded by this gene is similar to bovine and porcine proteins which accelerate transfer of certain glycosphingolipids and glyceroglycolipids between membranes. It is thought to be a cytoplasmic protein. [provided by RefSeq, Jul 2008]

Product images:



Circular map for RG202383