

Product datasheet for **RG202373**

LSM6 (NM_007080) Human Tagged ORF Clone

Product data:

Product Type: Expression Plasmids
Product Name: LSM6 (NM_007080) Human Tagged ORF Clone
Tag: TurboGFP
Symbol: LSM6
Synonyms: YDR378C
Mammalian Cell Selection: Neomycin
Vector: pCMV6-AC-GFP (PS100010)
E. coli Selection: Ampicillin (100 ug/mL)
ORF Nucleotide Sequence: >RG202373 representing NM_007080
Red=Cloning site Blue=ORF Green=Tags(s)

TTTTGTAATACGACTCACTATAGGGCGGCCGGAATTCGTCGACTGGATCCGGTACCGAGGAGATCTGCC
GCC**CGATCGCC**

ATGAGTCTTCGGAAGCAAACCCCTAGTGACTTCTTAAAGCAAATCATCGGACGACCAGTTGTGGTAAAAT
TAAATTCTGGAGTGGATTATCGAGGGTCTGGCTTGCCTGGATGGCTACATGAATATAGCCCTGGAGCA
GACAGAAGAATATGTAATGGACAACCTGAAGAATAAGTATGGGGATGCATTTATCCGAGGAAACAATGTG
TTGTACATCAGTACACAGAAGAGACGGATG

ACGCGTACGCGGCCGCTCGAG - GFP Tag - GTTTAA

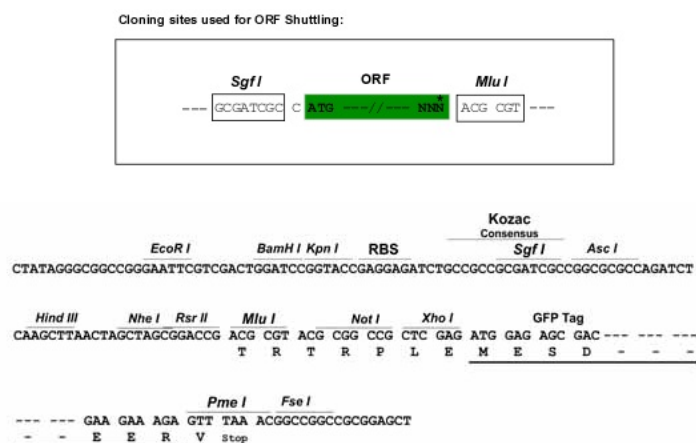
Protein Sequence: >RG202373 representing NM_007080
Red=Cloning site Green=Tags(s)
MSLRKQTPSDFLKQIIGRPVVVKLNSGVDYRGVLAACLDGYMNIQTEEVVNGQLKNKYGDAFIRGNV
LYISTQKRRM

TRTRPLE - GFP Tag - V

Restriction Sites: Sgfl-MluI



[View online »](#)

Cloning Scheme:


ACCN: NM_007080

ORF Size: 240 bp

OTI Disclaimer: The molecular sequence of this clone aligns with the gene accession number as a point of reference only. However, individual transcript sequences of the same gene can differ through naturally occurring variations (e.g. polymorphisms), each with its own valid existence. This clone is substantially in agreement with the reference, but a complete review of all prevailing variants is recommended prior to use. [More info](#)

OTI Annotation: This clone was engineered to express the complete ORF with an expression tag. Expression varies depending on the nature of the gene.

Components: The ORF clone is ion-exchange column purified and shipped in a 2D barcoded Matrix tube containing 10ug of transfection-ready, dried plasmid DNA (reconstitute with 100 ul of water).

Reconstitution Method:

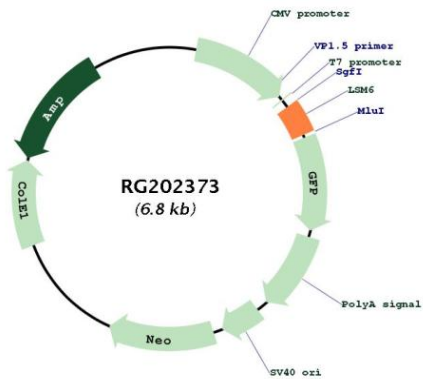
1. Centrifuge at 5,000xg for 5min.
2. Carefully open the tube and add 100ul of sterile water to dissolve the DNA.
3. Close the tube and incubate for 10 minutes at room temperature.
4. Briefly vortex the tube and then do a quick spin (less than 5000xg) to concentrate the liquid at the bottom.
5. Store the suspended plasmid at -20°C. The DNA is stable for at least one year from date of shipping when stored at -20°C.

RefSeq: [NM_007080.3](#)

RefSeq Size: 596 bp

RefSeq ORF:	243 bp
Locus ID:	11157
UniProt ID:	P62312
Cytogenetics:	4q31.22
Domains:	Sm
Protein Families:	Stem cell - Pluripotency
Protein Pathways:	RNA degradation, Spliceosome
Gene Summary:	Sm-like proteins were identified in a variety of organisms based on sequence homology with the Sm protein family (see SNRPD2; MIM 601061). Sm-like proteins contain the Sm sequence motif, which consists of 2 regions separated by a linker of variable length that folds as a loop. The Sm-like proteins are thought to form a stable heteromer present in tri-snRNP particles, which are important for pre-mRNA splicing.[supplied by OMIM, Apr 2004]

Product images:



Circular map for RG202373