

Product datasheet for **RG202371**

ZNF707 (NM_173831) Human Tagged ORF Clone

Product data:

Product Type:	Expression Plasmids
Product Name:	ZNF707 (NM_173831) Human Tagged ORF Clone
Tag:	TurboGFP
Symbol:	ZNF707
Mammalian Cell Selection:	Neomycin
Vector:	pCMV6-AC-GFP (PS100010)
E. coli Selection:	Ampicillin (100 ug/mL)
ORF Nucleotide Sequence:	>RG202371 representing NM_173831 Red=Cloning site Blue=ORF Green=Tags(s)

TTTTGTAATACGACTCACTATAGGGCGGCCGGAATTCGTCGACTGGATCCGGTACCGAGGAGATCTGCC
GCC**CGATCGCC**

ATGGCCCAGGAGCCAGTGACCTTCAGGGACGTGGCCATCTACTTCTCAAGGGAGGAGTGGGCGTGTCTGG
AACCCAGCCAGAGGGCCCTCTACCGGGACGTGATGCTGGACAACCTCAGCAGTGTGGCTGCTCTGGGATT
TTGCAGCCCCAGACCAGACCTCGTCTCTCGCCTGGAACAGTGGGAGGAGCCGTGGGTTGAAGACCGGGAG
AGACCTGAGTTCAGGCAGTGCAGAGGGGACCCCGCCAGGGGCAAGGAAGTCTGCAGACCCCAAGAGAC
ATTGTGATCATCCAGCTTGGGCTACAAGAAAACCCAGTGCGGCGAGAAAGACCAGGGAAGGAAGCAG
CTTTAGGAAGGGCTTCAGGCTGGACACGGATGACGGGCAGCTTCCAGAGCTGCTCCAGAAAGACAGAC
GCCAAGCCCACGGCTTCCCGTGTGAGGTGCTCACGCAGCGTTGTGGCGGCGGGCCGCGAGAGAGC
GCCGGAAGCAGCGCGCAGTAGAGCTGTCGTTTCATCTGCGGCACGTGCGGGAAGGCGCTCAGCTGCCACAG
CCGGCTGCTCGCTCACCAGACGGTGCACACGGGAACCAAGGCCTTCGAGTGCCCCGAGTGCGGCCAGACC
TTCCGGTGGGCTTCAAACCTGCAGCGCCACCAGAAGAACCACACGCGGAGAAAGCCCTTCTGCTGCGAGG
CCTGCGGGCAGGCGTTCAGCCTGAAGGACCGCCTGGCTCAGCACCAGGTCACACCGAGCACAGGCC
CTACTCGTGTGGCGACTGTGGGAAAGCCTTCAAGCAGAAGTCAAACCTTCTCAGACACCAGCTGGTGCAC
ACCGGGGAGCGCGCTTCTACTGCGGGACTGCGGCAAAGCCTTCCGGACCAAGGAGAACCTCAGCCACC
ACCAGAGGGTCCACAGCGGGGAGAAGCCCTACACCTGTGCCGAGTGCGGCAAGTCCTCCGGTGGCCCAA
GGGCTTACGATCCACCGGAGGCTGCACCTGACGAAGAGGTTCTACGAGTGCGGCCACTGTGGGAAAGGC
TTCGCTACCTGGGGTTCTTACGCGGCATCAGAGGACTCACAGGCACGGGGAGGTG

ACGCGTACGCGGCCGCTCGAG - GFP Tag - GTTTAA



[View online »](#)

Protein Sequence: >RG202371 representing NM_173831
Red=Cloning site Green=Tags(s)

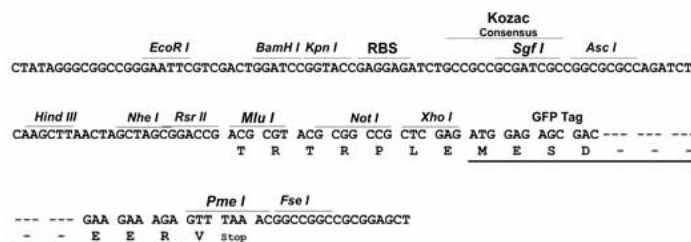
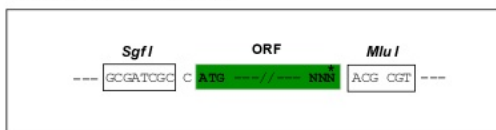
MAQEPVTFRDVAIYFSREEWACLEPSQRALYRDVMLDNFSSVAALGFCSRPDLVSRLEQWEEPWVEDRE
 RPEFQAVQRGPRPGARKSADPKRHCDHPAWAHKKTHVRRERAREGSSFRKGFRLDIDDGQLPRAAPERTD
 AKPTAFPCQVLTQRCGRPRGRERRRKRQRAVELSFCGTGKALSCHSRLLAHQTVHTGKAFCEPCGQT
 FRWASNLQRHQKNTREKPFCEACGQAFSLKDRLAQHRKVHTEHRPYSCGDGKAFKQKSNLLRHQLVH
 TGERPFYCADCGKAFRTKENLSHHQRVHSGEKPYTCAECGKSFWRPKGFSIHRRLHLTKRFYECGHCGKG
 FRHLGFFTRHQTRRHGEV

TRTRPLE - GFP Tag - V

Restriction Sites: SgfI-MluI

Cloning Scheme:

Cloning sites used for ORF Shuttling:



ACCN: NM_173831

ORF Size: 1107 bp

OTI Disclaimer: The molecular sequence of this clone aligns with the gene accession number as a point of reference only. However, individual transcript sequences of the same gene can differ through naturally occurring variations (e.g. polymorphisms), each with its own valid existence. This clone is substantially in agreement with the reference, but a complete review of all prevailing variants is recommended prior to use. [More info](#)

OTI Annotation: This clone was engineered to express the complete ORF with an expression tag. Expression varies depending on the nature of the gene.

Components: The ORF clone is ion-exchange column purified and shipped in a 2D barcoded Matrix tube containing 10ug of transfection-ready, dried plasmid DNA (reconstitute with 100 ul of water).

Reconstitution Method:

1. Centrifuge at 5,000xg for 5min.
2. Carefully open the tube and add 100ul of sterile water to dissolve the DNA.
3. Close the tube and incubate for 10 minutes at room temperature.
4. Briefly vortex the tube and then do a quick spin (less than 5000xg) to concentrate the liquid at the bottom.
5. Store the suspended plasmid at -20°C. The DNA is stable for at least one year from date of shipping when stored at -20°C.

RefSeq: [NM_173831.2](#), [NP_776192.1](#)

RefSeq Size: 2302 bp

RefSeq ORF: 1116 bp

Locus ID: 286075

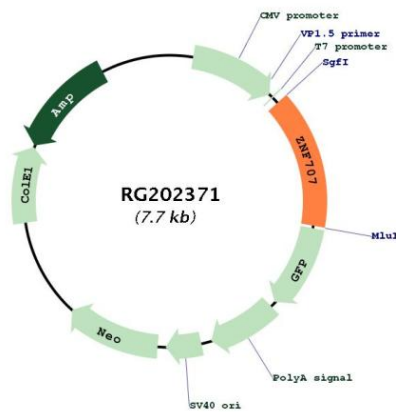
UniProt ID: [Q96C28](#)

Cytogenetics: 8q24.3

Protein Families: Transcription Factors

Gene Summary: May be involved in transcriptional regulation.[UniProtKB/Swiss-Prot Function]

Product images:



Circular map for RG202371